

STATE OF ILLINOIS
DEPARTMENT OF TRANSPORTATION

BEARING DIMENSION TABLE

Bearing Location	Beams	Type	No. Req'd.	T _h in.	Elastomer					Top Plate					Bottom Plate			Anchor Bolts			Pintles/Pin			Side Retainers								
					W _e in.	L _e in.	T _e in.	T _p in.	N _p	T _s in.	N _s	W _t in.	L _t in.	T _{td} in.	T _{tu} in.	R _t in.	W _b in.	L _b in.	T _b in.	D _a in.	L _a in.	R _b in.	H _b in.	W _p in.	D _p in.	D _s in.	H _p in.	y in.	z in.	t in.	h in.	v in.
C. Abut. 4, N. Brgs.	NG4,NG5,NG8,NG9,NG6,NG10	I	6	3 ⁵ / ₁₆	7	12	15 ¹ / ₁₆	3 ³ / ₈	3	3 ³ / ₃₂	2	8	14	2	2	4	-	-	-	1	12	10 ¹ / ₂	-	2 ¹ / ₄	-	-	-	2 ¹ / ₈	4	2	1 ¹ / ₄	3 ¹ / ₂
C. Abut. 4, N. Brgs.	NG1,NG2,NG3,NG7	I	4	5 ¹ / ₄	10	14	3 ¹ / ₄	3 ¹ / ₈	6	1 ¹ / ₈	5	11	16 ¹ / ₂	2	2	7	-	-	-	1	12	9 ¹ / ₄	-	2 ¹ / ₄	-	-	-	2 ¹ / ₈	4	2	1 ¹ / ₄	5 ¹ / ₄
C. Abut. 4, N. Brgs.	A-R	I	16	5 ³ / ₁₆	9	12	3 ³ / ₁₆	3 ³ / ₈	7	3 ³ / ₃₂	6	10	14	2	2	6	-	-	-	1	12	9 ¹ / ₄	-	2 ¹ / ₄	-	-	-	2 ¹ / ₈	4	2	1 ¹ / ₄	5 ³ / ₁₆
Pier 7	NG1,NG2,NG3,NG7	Fix	4	3	-	-	-	-	-	-	-	10	14	1 ¹ / ₈	1 ¹ / ₈	-	-	-	10 ³ / ₄	22 ¹ / ₄	1 ¹ / ₈	1 ¹ / ₈	1 ¹ / ₈	1 ¹ / ₈	1 ¹ / ₈	1 ¹ / ₈	-	-	-	-	-	
Pier 7	A-R	Fix	-	-	-	-	-	-	-	-	-	-	-	-	-	-	-	-	-	-	-	-	-	-	-	-	-	-	-	-	-	
Existing fixed bearings to remain																																
Pier 8	NG1,NG2,NG3,NG7	I	4	6 ⁵ / ₈	13	20	3 ⁷ / ₈	5 ⁵ / ₈	5	3 ¹ / ₁₆	4	14	22	2 ³ / ₄	2 ³ / ₄	10	-	-	-	1	12	13 ¹ / ₄	-	2 ¹ / ₄	-	-	-	2 ¹ / ₈	4	2	1 ¹ / ₄	6 ⁵ / ₈
Pier 8	A-R	I	16	6 ⁵ / ₈	13	20	3 ⁷ / ₈	5 ⁵ / ₈	5	3 ¹ / ₁₆	4	14	22	2 ³ / ₄	2 ³ / ₄	10	-	-	-	1	12	13 ¹ / ₄	-	2 ¹ / ₄	-	-	-	2 ¹ / ₈	4	2	1 ¹ / ₄	6 ⁵ / ₈
Pier 9, S. Brgs.	NG1,NG2,NG3,NG7	II	4	8 ¹ / ₈	9	12	4 ¹ / ₁₆	3 ³ / ₈	7	3 ³ / ₃₂	6	11	14	2	2	7	10	22 ¹ / ₄	2	1	12	9 ¹ / ₄	1 ¹ / ₂	2 ¹ / ₄	-	-	-	2 ¹ / ₈	4	2	1 ¹ / ₄	6 ¹ / ₄
Pier 9, S. Brgs.	A-R	II	16	8 ¹ / ₈	9	12	4 ¹ / ₁₆	3 ³ / ₈	7	3 ³ / ₃₂	6	11	14	2	2	7 ¹ / ₂	10	22 ¹ / ₄	2	1	12	9 ¹ / ₄	1 ¹ / ₂	2 ¹ / ₄	-	-	-	2 ¹ / ₈	4	2	1 ¹ / ₄	6 ¹ / ₄
Pier 9, N. Brgs.	NG11, NG12, NG13	III	3	8 ¹ / ₁₆	11	16	3 ¹ / ₄	1 ¹ / ₂	4	1 ¹ / ₈	3	14	22	3	3	9	12	33 ¹ / ₄	2 ³ / ₈	1 ¹ / ₂	18	13 ¹ / ₈	2	3	1 ¹ / ₂	2	2 ³ / ₄	2 ³ / ₄	5 ¹ / ₂	5 ¹ / ₈	1 ³ / ₄	6 ¹ / ₄
Pier 9, N. Brgs.	A-P	III	14	8 ¹ / ₁₆	11	16	3 ¹ / ₄	1 ¹ / ₂	4	1 ¹ / ₈	3	14	20	3	3	9	12	31 ¹ / ₄	2 ³ / ₈	1 ¹ / ₂	18	12 ¹ / ₈	2	3	1 ¹ / ₂	2	2 ³ / ₄	2 ³ / ₄	5 ¹ / ₂	5 ¹ / ₈	1 ³ / ₄	6 ¹ / ₄
Existing fixed bearings to remain																																
Pier 11	NG11, NG12, NG13, P	Fix	4	6	-	-	-	-	-	-	-	14	23 ¹ / ₂	3	3	-	-	-	-	-	-	-	-	-	-	-	-	-	-	-	-	
Pier 11	A-N	Fix	-	-	-	-	-	-	-	-	-	-	-	-	-	-	-	-	-	-	-	-	-	-	-	-	-	-	-	-	-	

Notes:
Anchor bolts shall be ASTM F1554 all-thread (or an Engineer-approved alternate material) of the grade(s) and diameter(s) specified. ASTM A307 Grade C anchor bolts may be used in lieu of ASTM F1554 Grade 36 (Fy=36ksi). The corresponding specified grade of AASHTO M314 anchor bolts may be used in lieu of ASTM F1554.
Anchor bolts at fixed bearings may be either cast in place or installed in holes drilled after the supported member is in place.
Anchor bolts for side retainers may be cast in place or installed in holes drilled before or after members are in place.
Drilled and set anchor bolts shall be installed according to Article 521.06 of the Standard Specifications.
Side retainers and other steel members required for the bearing assembly are furnished under a separate contract. Installation of these items is included in the cost of "Erecting Elastomeric Bearing Assembly, Type I".
The structural steel plates of the Bearing Assembly shall conform to the requirements of AASHTO M 270 Grade 36. Two 1/8" adjusting shims shall be provided for each bearing in addition to all other plates or shims and placed as shown on bearing details.

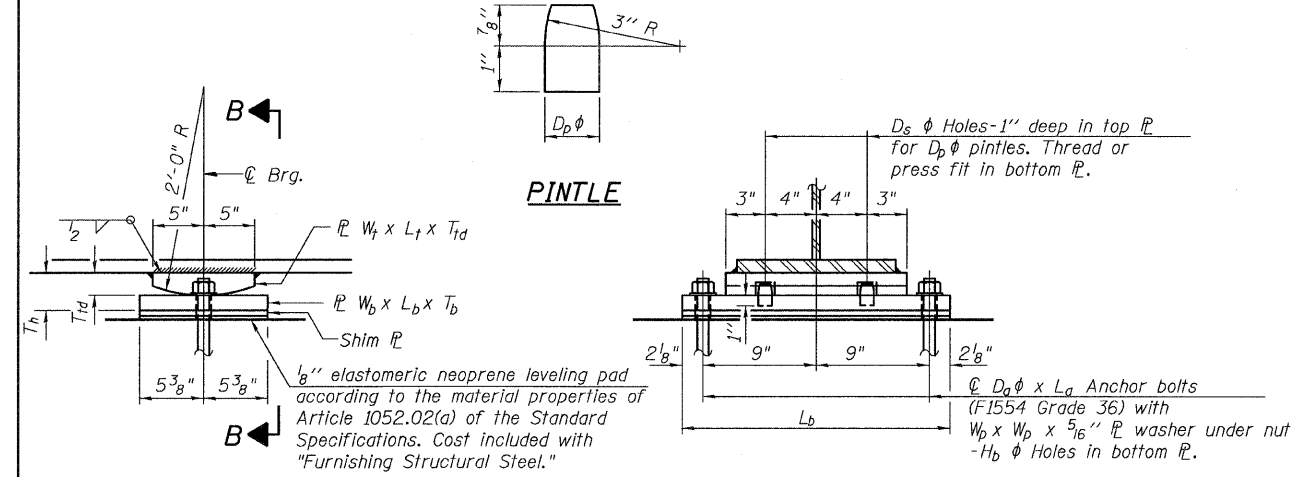
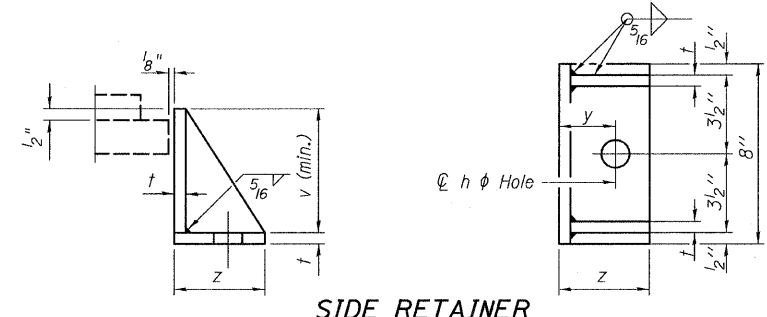
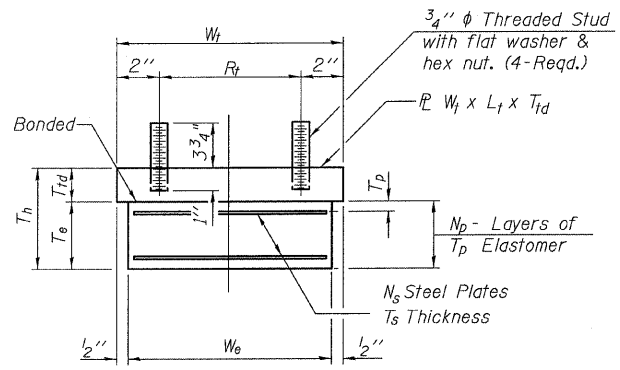
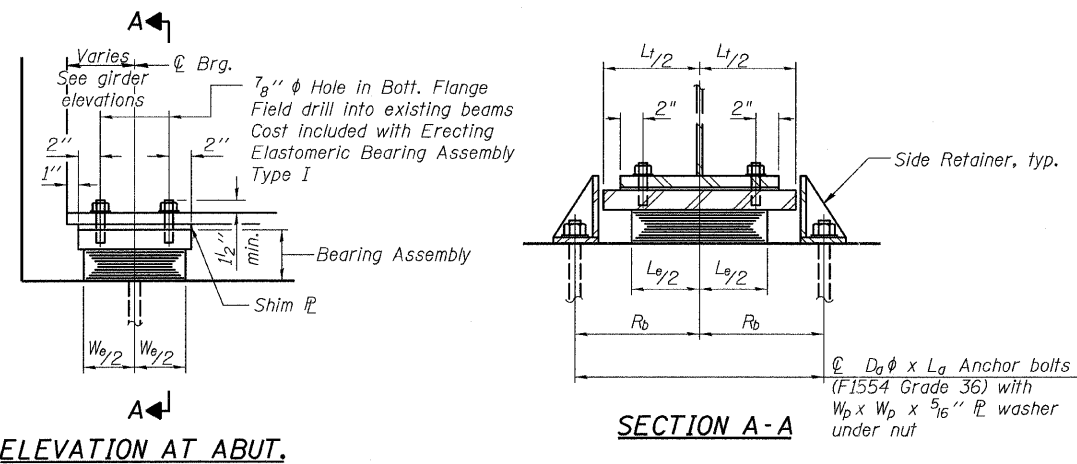
BILL OF MATERIAL

Item	Unit	Total
Erecting Elastomeric Bearing Assembly Type I	Each	46
Anchor Bolts, 1"	Each	92
Anchor Bolts, 1 1/4"	Each	8

SHIM PLATE THICKNESS TABLE

(Provided in addition to 1/8" adjusting shims)

Beam	Abut. 4C, N. Brg.	Pier 9, S. Brg.
M	3/8"	--
N	5/8"	--
Q	1/4"	--
R	1/4"	--
NG3	3/8"	1/2"



ELASTOMERIC BEARING TYPE I
STRUCTURE NO. 016-3240

TYLIN INTERNATIONAL	DESIGNED - DY, LS	REVISIONS		SHEET NO. 50	F.A.I. RTE.	SECTION	COUNTY	TOTAL SHEETS	SHEET NO.	
	CHECKED - AMD, LS	NAME	DATE		55	0711.2R & 1011.1BR	COOK	741	653	
	DRAWN - DY, LS				73 SHEETS	CONTRACT NO. 60999				
	CHECKED - AMD, LS					FED. ROAD DIST. NO. 1 ILLINOIS FED. AID PROJECT				
	DATE - 03/25/2011									

4/25/13 PM
p:\01345\structure\016-3240\1553\stypes1.dgn