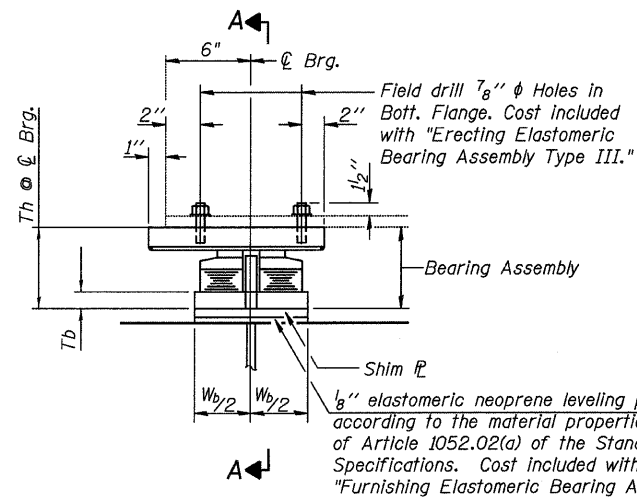
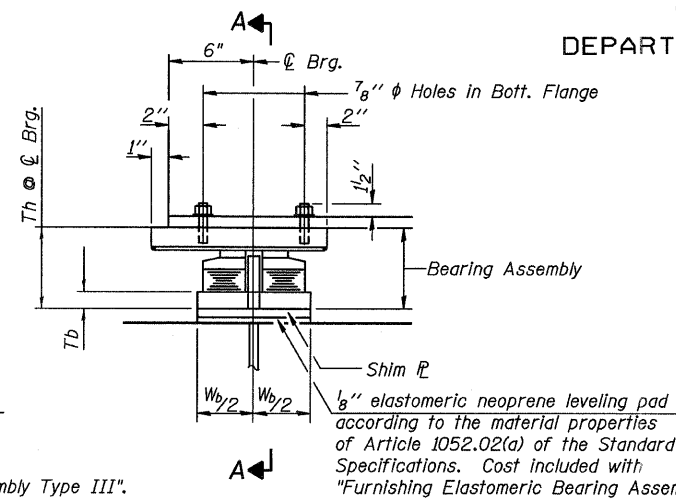


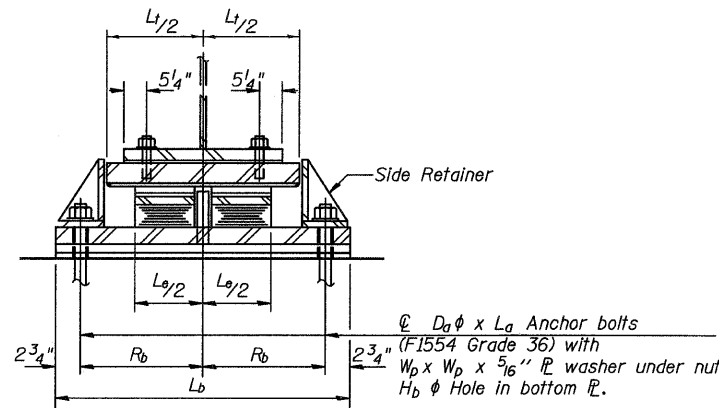
STATE OF ILLINOIS
DEPARTMENT OF TRANSPORTATION



ELEVATION AT PIER 9 N. BRGS.
(At existing beams)



ELEVATION AT PIER 9 N. BRGS.
(At proposed beams)



SECTION A-A

Notes:

Anchor bolts shall be ASTM F1554 all-thread (or an Engineer-approved alternate material) of the grade(s) and diameter(s) specified. ASTM A307 Grade C anchor bolts may be used in lieu of ASTM F1554 Grade 36 (Fy=36ksi). The corresponding specified grade of AASHTO M314 anchor bolts may be used in lieu of ASTM F1554.

Anchor bolts for Type III bearings shall be placed in holes drilled in the concrete through holes in the bottom bearing plate after members are in place. Side retainers shall be placed after bolts are installed.

Drilled and set anchor bolts shall be installed according to Article 521.06 of the Standard Specifications.

Side retainers and other steel members required for the bearing assembly shall be included in the cost of "Furnishing Elastomeric Bearing Assembly, Type III".

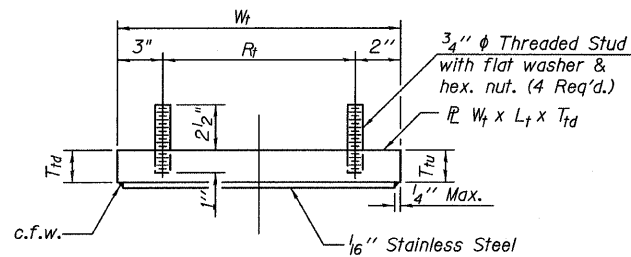
The $\frac{1}{8}$ " PTFE sheet shall be bonded directly to the top steel plate with a two-component, medium viscosity epoxy resin, conforming to the requirements of the Federal Specification MMM-A-134, Type I. The bond agent shall be applied on the full area of the contact surfaces.

Bonding of $\frac{1}{8}$ " PTFE sheet during vulcanizing process will be permitted provided the process and method of adjusting assembly height is approved by the Engineer.

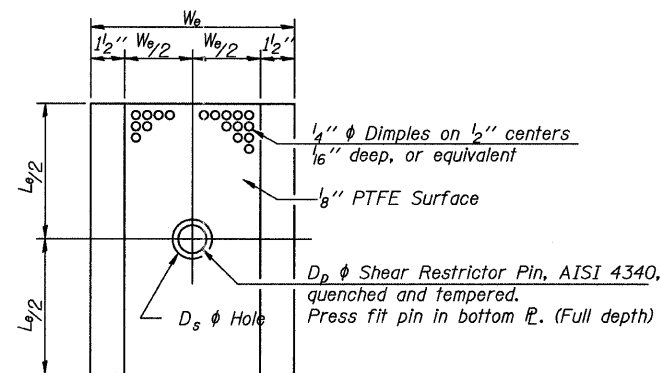
The structural steel plates of the Bearing Assembly shall conform to the requirements of AASHTO M 270 Grade 36.

For bearing dimensions refer to the table on sheet 30.

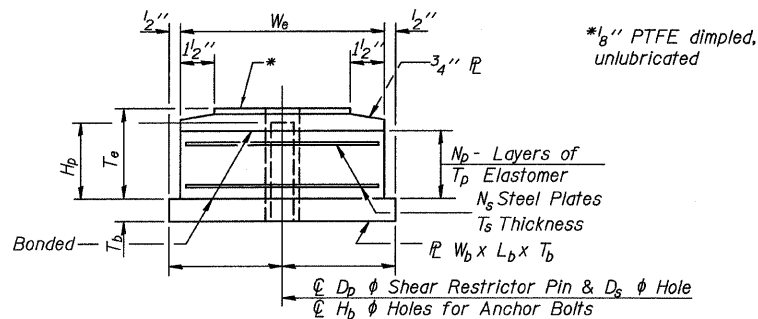
TYPE III ELASTOMERIC EXP. BRG.



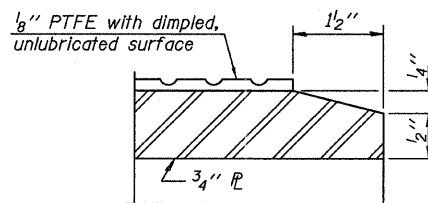
TOP BEARING ASSEMBLY



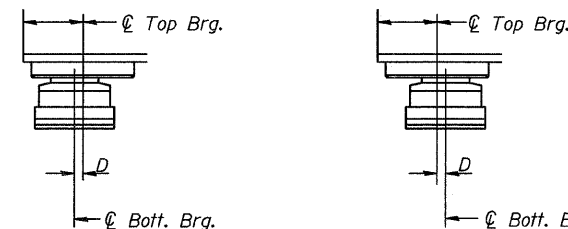
PLAN-PTFE ELASTOMERIC BRG.



BOTTOM BEARING ASSEMBLY

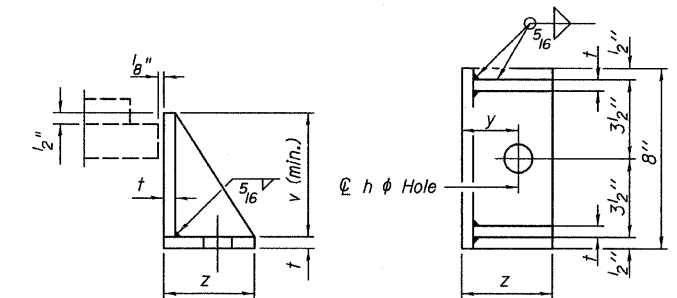


SECTION THRU PTFE



SETTING ANCHOR BOLTS AT EXP. BRG.

$D = \frac{1}{8}$ " per each 100' of expansion for every 15° temp. change from the normal temp. of 50° F.



SIDE RETAINER

Equivalent rolled angle with stiffeners will be allowed in lieu of welded plates.

BILL OF MATERIAL

Item	Unit	Total
Furnishing Elastomeric Bearing Assembly Type III	Each	17
Anchor Bolts, $\frac{1}{2}$ "	Each	34

ELASTOMERIC BEARING TYPE III
STRUCTURE NO. 016-3240

I-2E-3

11-1-09

TYLIN INTERNATIONAL	DESIGNED - DY, LS	REVISIONS		SHEET NO. 52	F.A.I RTE.	SECTION	COUNTY	TOTAL SHEETS	SHEET NO.	
	CHECKED - AMD, LS	NAME	DATE		73 SHEETS	55	0711.2R & 1011.1BR	COOK	741	655
	DRAWN - DY, LS				CONTRACT NO. 60999					
	CHECKED - AMD, LS				FED. ROAD DIST. NO. 1 ILLINOIS FED. AID PROJECT					
	DATE - 03/25/2011									

5/9/2011 9:20:44 AM