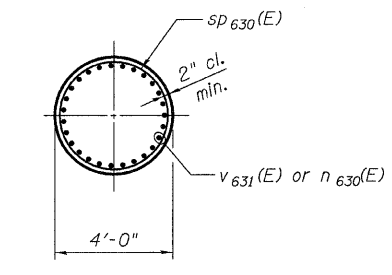
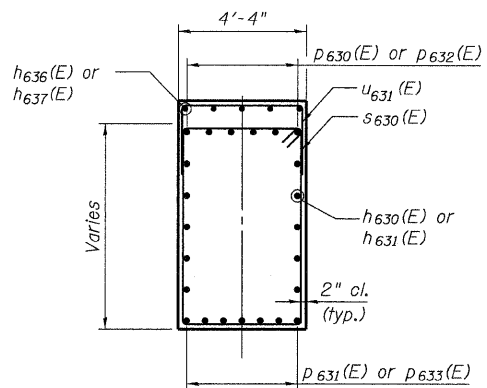


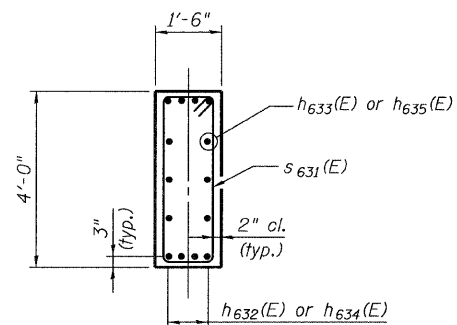
STATE OF ILLINOIS  
DEPARTMENT OF TRANSPORTATION



SECTION A-A



SECTION B-B



SECTION C-C

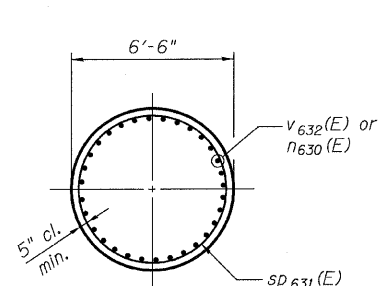
MINIMUM BAR LAPS

Bar Size	Min. Lap
#5	3'-3"
#6	3'-1"
#11	13'-4"

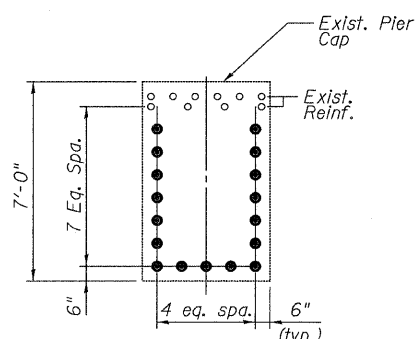
BILL OF MATERIAL

Bar	No.	Size	Length	Shape
d 630(E)	63	#6	3'-10"	—
h 630(E)	10	#5	19'-4"	—
h 631(E)	10	#5	7'-9"	—
h 632(E)	8	#9	13'-1"	—
h 633(E)	6	#5	12'-0"	—
h 634(E)	8	#9	5'-2"	—
h 635(E)	6	#5	4'-3"	—
* h 636(E)	5	#5	15'-9"	—
* h 637(E)	5	#5	9'-7"	—
n 630(E)	62	#9	13'-8"	—
p 630(E)	6	#11	21'-2"	—
p 631(E)	7	#9	19'-0"	—
p 632(E)	6	#11	9'-7"	—
* p 633(E)	7	#9	9'-10"	—
p 634(E)	4	#9	20'-9"	—
s 630(E)	36	#5	22'-5"	—
s 631(E)	20	#5	10'-7"	—
s 632(E)	7	#5	8'-4"	—
s 633(E)	12	#5	14'-0"	—
** s p 630(E)	2	#5	21'-6"	—
** s p 631(E)	2	#5	72'-2"	—
u 630(E)	12	#5	12'-8"	—
u 631(E)	26	#5	9'-2"	—
v 630(E)	6	#5	6'-10"	—
v 631(E)	54	#9	25'-3"	—
v 632(E)	124	#11	42'-6"	—
v 633(E)	6	#5	6'-3"	—
Mechanical Splicers	EACH	10		
Drilled Shaft in Soil	CU YD	174.5		
Drilled Shaft in Rock	CU YD	2.1		
Structure Excavation	CU YD	21.6		
Concrete Structures	CU YD	60.3		
Reinforcement Bars, Epoxy Coated	POUND	44,350		

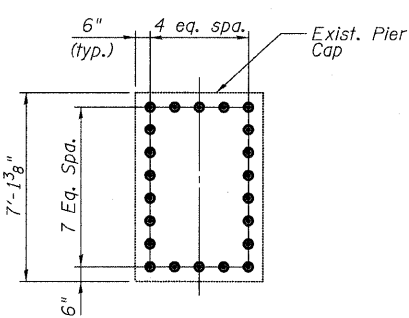
\* Cut to fit in field.  
\*\* Length is height of spiral.



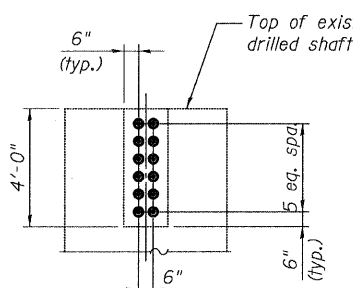
SECTION D-D



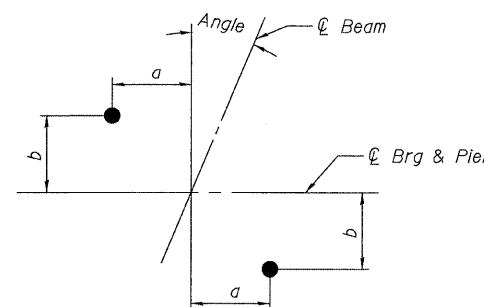
SECTION E-E



SECTION G-G

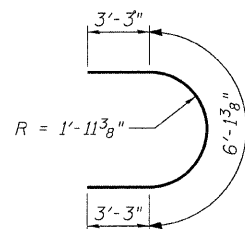


SECTION F-F



ANCHOR BOLT LAYOUT

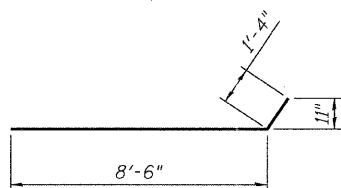
Beam	Angle	a	b
NG13	21°39'15"	1'-0 3/4"	5 1/6"
A Thru P	21°39'15"	1'-0 3/4"	5 1/6"
NG11	22°8'40"	1'-0 3/4"	5 3/6"
NG12	22°37'52"	1'-0 1/6"	5 5/6"



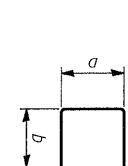
BAR U 630(E)



BAR p 631(E)

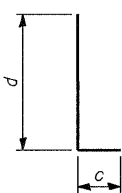


BAR p 633(E)



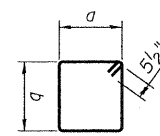
Bar	a	b
s 632(E)	4'-0"	2'-2"
s 633(E)	4'-0"	5'-0"
u 631(E)	4'-0"	2'-7"

BAR s 632(E), s 633(E) & u 631(E)



Bar	c	d
p 630(E)	2'-0"	19'-2"
p 632(E)	2'-0"	9'-8"
p 634(E)	1'-7"	19'-2"

BAR p 630(E), p 632(E) & p 634(E)



Bar	a	b
s 630(E)	4'-0"	6'-9"
s 631(E)	1'-2"	3'-8"

BAR s 630(E) & s 631(E)

PIER 10 DETAILS  
STRUCTURE NO. 016-3240

TYLIN INTERNATIONAL	DESIGNED - DY, LS	REVISIONS		SHEET NO. 62	F.A.I. RTE.	SECTION	COUNTY	TOTAL SHEETS	SHEET NO.						
	CHECKED - AMD, LS	NAME	DATE							73 SHEETS	55	0711.2R & 1011.1BR	COOK	741	665
	DRAWN - DY, LS									CONTRACT NO. 60999					
	CHECKED - AMD, LS									FED. ROAD DIST. NO. 1 ILLINOIS FED. AID PROJECT					
	DATE - 03/25/2011														

p:\01345\structure\016-3240\15563pier10.dwg 5/9/2011 9:20:54 AM