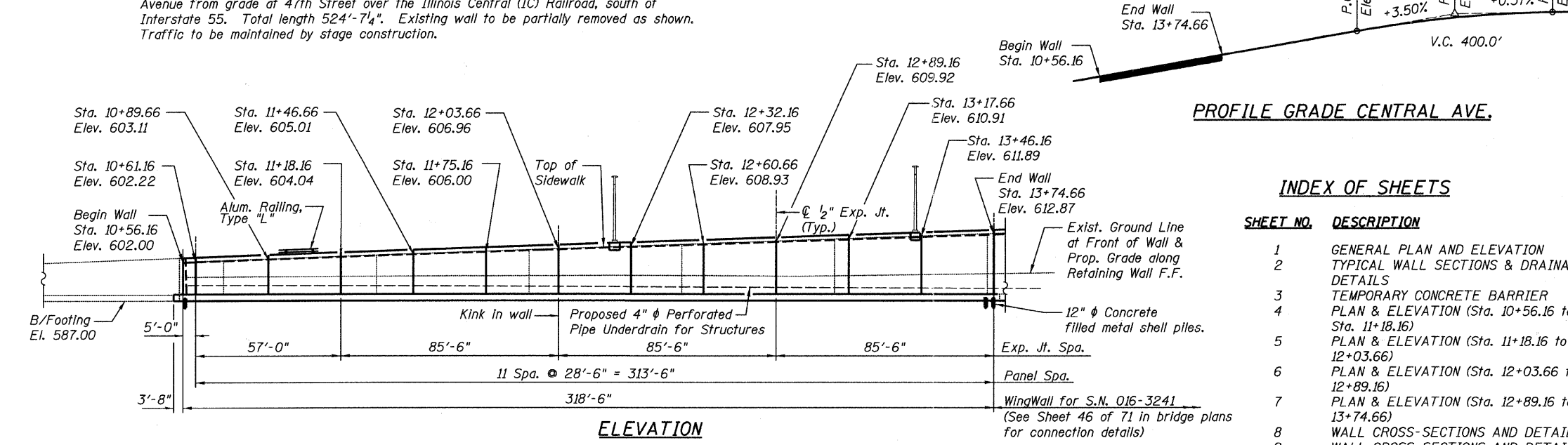


Benchmark: N 1874267.729 E 1140141.340 EL. 621.124
 Cut square on top of pier at N retaining wall of SE Ramp.
 Approx. 1050 Feet E of Central Ave.

STATE OF ILLINOIS
 DEPARTMENT OF TRANSPORTATION

Existing Structure: Structure Number 016-3241 built in 1964. Sec. 207-1011.1-C.F.
 Reinforced concrete cantilever retaining wall, supported on timber pile footing, adjacent to east side of Central Avenue, south of south approach structure which carries Central Avenue from grade at 47th Street over the Illinois Central (IC) Railroad, south of Interstate 55. Total length 524'-7 1/4". Existing wall to be partially removed as shown. Traffic to be maintained by stage construction.



TOTAL BILL OF MATERIAL

ITEM	UNIT	QTY.
Porous Granular Embankment (Special)	Cu Yd	1,070
Concrete Removal	Cu Yd	113.4
Structure Excavation	Cu Yd	1,023
Concrete Structures	Cu Yd	668.9
Reinforcement Bars, Epoxy Coated	Pound	80,660
Aluminum Railing, Type L	Foot	325
Furnishing Metal Shell Piles, 12"x0.25'	Foot	5,356
Driving Piles	Foot	5,356
Test Pile Metal Shells	Each	2
Geocomposite Wall Drain	Sq Yd	625
Protective Coat	Sq Yd	607
Bridge Rail Removal	Foot	319
Pipe Underdrains for Structures, 4"	Foot	323

DESIGN STRESSES
 FIELD UNITS

f'c = 3,500 psi
 fy = 60,000 psi (Reinforcement)

DESIGN SPECIFICATION

2002 AASHTO Standard Specifications for Highway Bridges

GENERAL NOTES

- Reinforcement bars shall conform to the requirements of ASTM A 706 Gr 60.
- Reinforcement bars designated (E) shall be epoxy coated.
- Plan dimensions and details relative to existing structure have been taken from existing plans and are subject to nominal construction variations. It shall be the Contractor's responsibility to verify such dimensions and details in the field and make necessary approved adjustments prior to construction or ordering of materials. Such variations shall not be cause for additional compensation for a change in the scope of the work, however, the Contractor will be paid for the quantity actually furnished at the unit price bid for the work.
- The contractor shall drive 2 concrete test piles in a permanent location, one at each end of retaining wall as directed by the Engineer before ordering the remainder of piles.
- Protective Coat shall be applied to the exposed surfaces of the parapet and front face of the wall above the ground line.

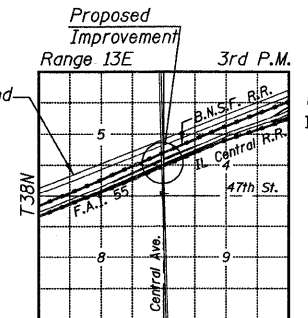
INDEX OF SHEETS

SHEET NO.	DESCRIPTION
1	GENERAL PLAN AND ELEVATION
2	TYPICAL WALL SECTIONS & DRAINAGE DETAILS
3	TEMPORARY CONCRETE BARRIER
4	PLAN & ELEVATION (Sta. 10+56.16 to Sta. 11+18.16)
5	PLAN & ELEVATION (Sta. 11+18.16 to 12+03.66)
6	PLAN & ELEVATION (Sta. 12+03.66 to 12+89.16)
7	PLAN & ELEVATION (Sta. 12+89.16 to 13+74.66)
8	WALL CROSS-SECTIONS AND DETAILS 1
9	WALL CROSS-SECTIONS AND DETAILS 2
10	WALL CROSS-SECTIONS AND DETAILS 3
11	ALUMINUM RAILING, TYPE L
12	METAL SHELL PILE DETAILS
13	BORING LOGS 1
14	BORING LOGS 2
15	BORING LOGS 3
16	BORING LOGS 4

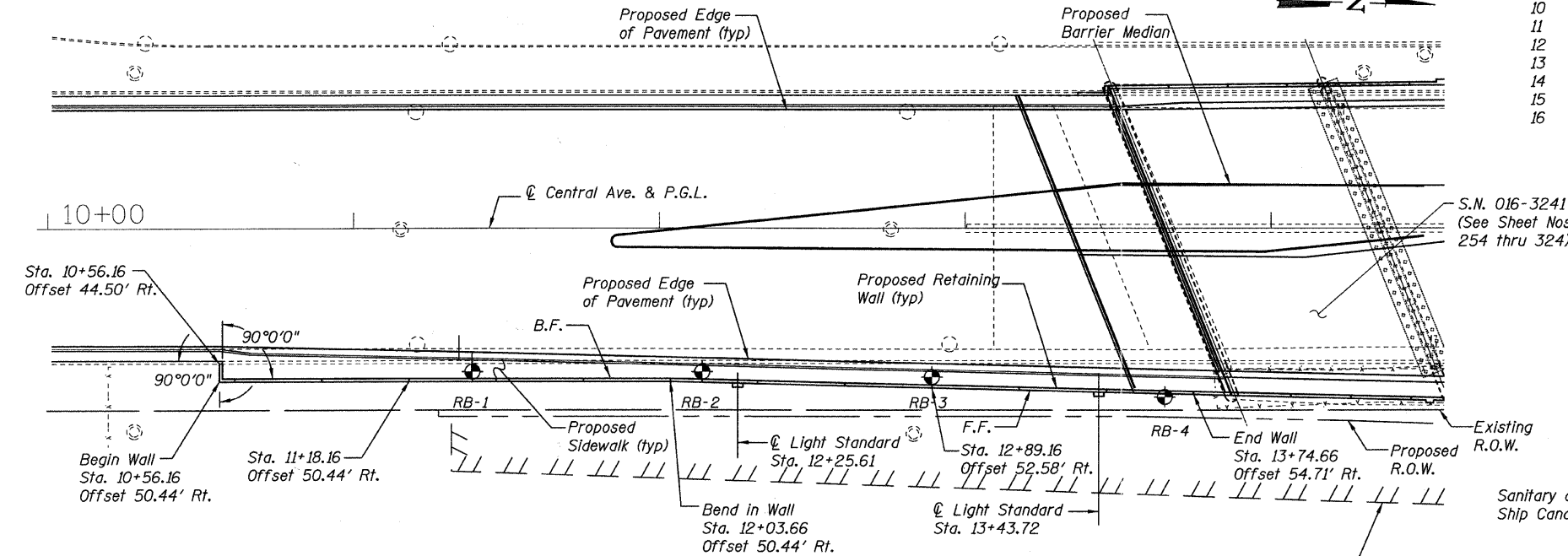
LEGEND

F.F. indicates Front Face
 B.F. indicates Back Face

◆ Boring Location



LOCATION SKETCH



GENERAL PLAN

APPROVED
 FOR STRUCTURAL ADEQUACY ONLY
 [Signature]
 ENGINEER OF BRIDGES AND STRUCTURES

Wall offsets are measured from ϕ Central Avenue to front face of wall.

BORING LOCATIONS

No.	Station	*Offset
RB-1	11+37.9	47.3' R
RB-2	12+14.1	47.3' R
RB-3	12+89.2	49.0' R
RB-4	13+65.3	55.6' R

* Offset from ϕ Central Avenue



Signed *Anna M. Dukes*
 Anna M. Dukes, S.E. IL Lic. No. 081-005598
 Expires 11-30-2012
 Date **March 25, 2011**

GENERAL PLAN & ELEVATION
 CENTRAL AVENUE RETAINING WALL
 F.A.I. RTE. 55 - SEC. 0711.2R & 1011.1BR
 COOK COUNTY
 STATION 10+56.16 TO STATION 13+74.66
 STRUCTURE NO. 016-W821

TYLIN INTERNATIONAL	DESIGNED - MMB	REVISIONS		SHEET NO. 1	F.A.I. RTE. 55	SECTION 0711.2R & 1011.1BR	COUNTY COOK	TOTAL SHEETS 741	SHEET NO. 677
	CHECKED - AMD,	NAME	DATE						
	DRAWN - MMB								
	CHECKED - AMD,								
	DATE - 03/25/2011			16 SHEETS	CONTRACT NO. 60999		FED. ROAD DIST. NO. 1 ILLINOIS FED. AID PROJECT		

5/10/2011 5:18:50 PM p:\013145\structure\Retaining Wall\ret55ape.dwg