

STATE OF ILLINOIS
DEPARTMENT OF TRANSPORTATION

LEGEND

F.F. - denotes Front Face
B.F. - denotes Back Face
E.F. - denotes Each Face

NOTES

1. For pile details, see sheet 12.

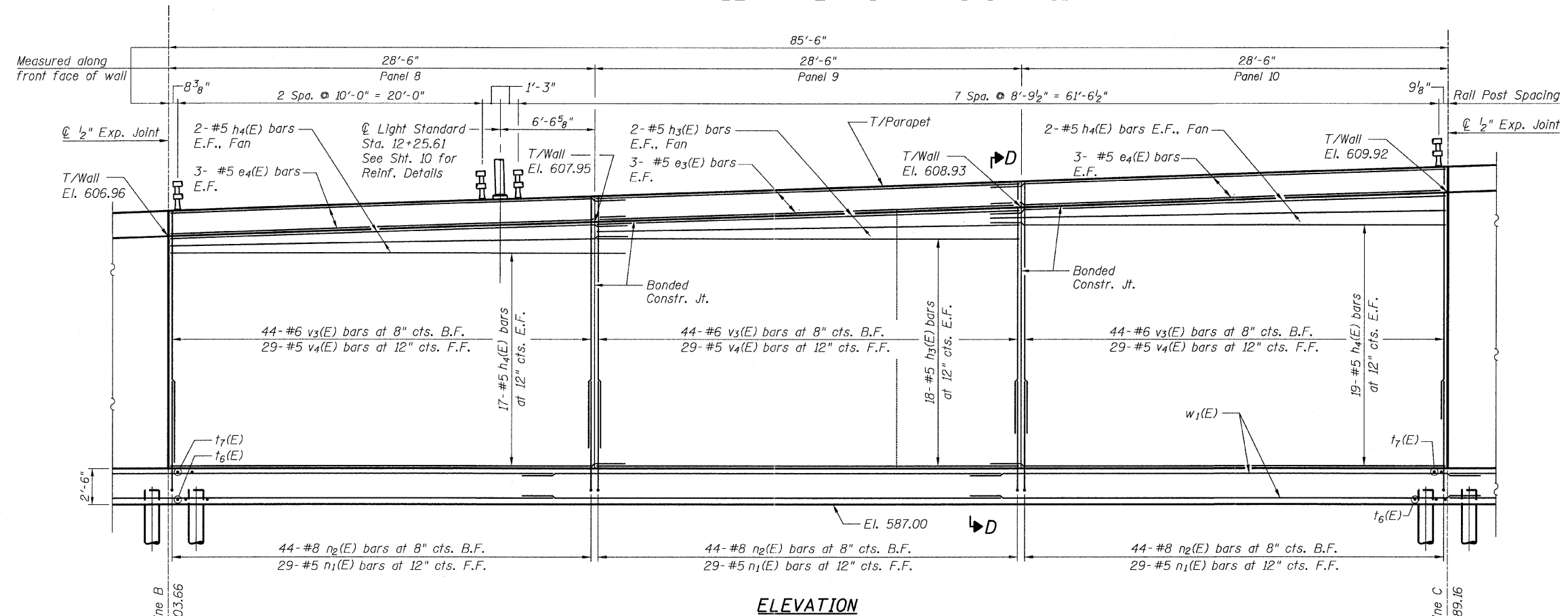
PILE DATA TABLE

Type: 12" ϕ x 0.25" Wall
Nominal Required Bearing: 270 kips
Allowable Resistance Available: 90 kips
Estimated Length: 36 ft
No. Production Piles: 56

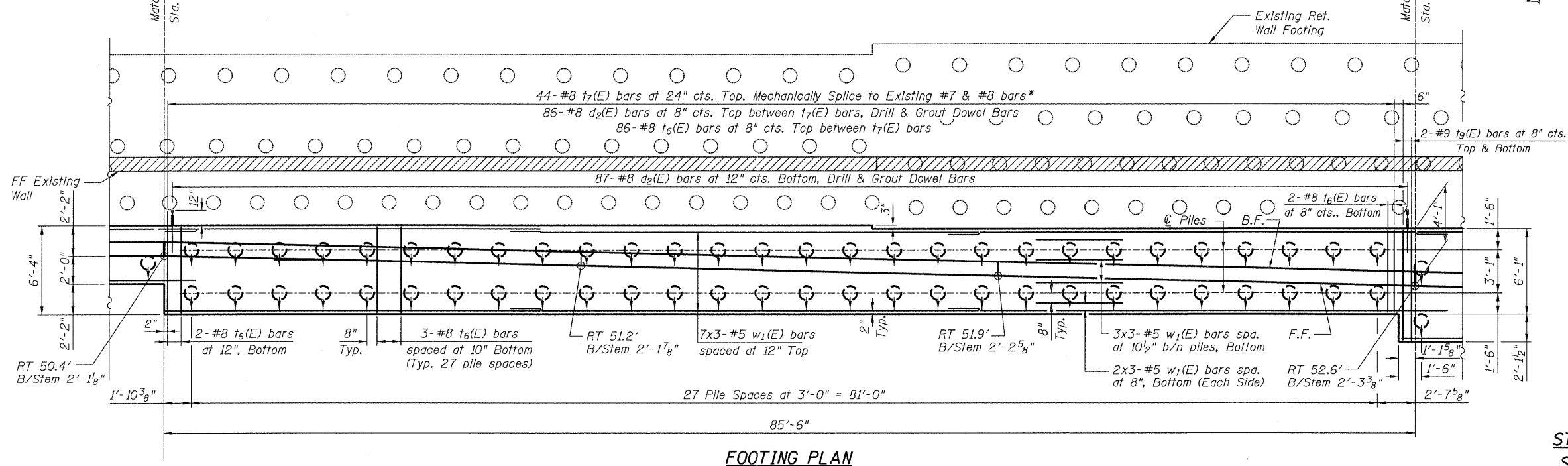
○ Proposed Pile

○ Existing Pile

* Cut to fit in field



ELEVATION



FOOTING PLAN

**PLAN & ELEVATION
STA. 12+03.66 TO 12+89.16
STRUCTURE NO. 016-W821**

TYLIN INTERNATIONAL

DESIGNED - MMB	REVISIONS	
CHECKED - AMD,	NAME	DATE
DRAWN - MMB		
CHECKED - AMD,		
DATE - 03/25/2011		

SHEET NO. 6	F.A.I. RTE.	SECTION	COUNTY	TOTAL SHEETS	SHEET NO.
	55	0711.2R & 1011.1BR	COOK	741	682
16 SHEETS	CONTRACT NO. 60999				
FED. ROAD DIST. NO. 1 ILLINOIS FED. AID PROJECT					

4/25/14 PM

p:\01345\structure\Retaining Wall\Ret55p\linelev3.dgn

5/10/2011