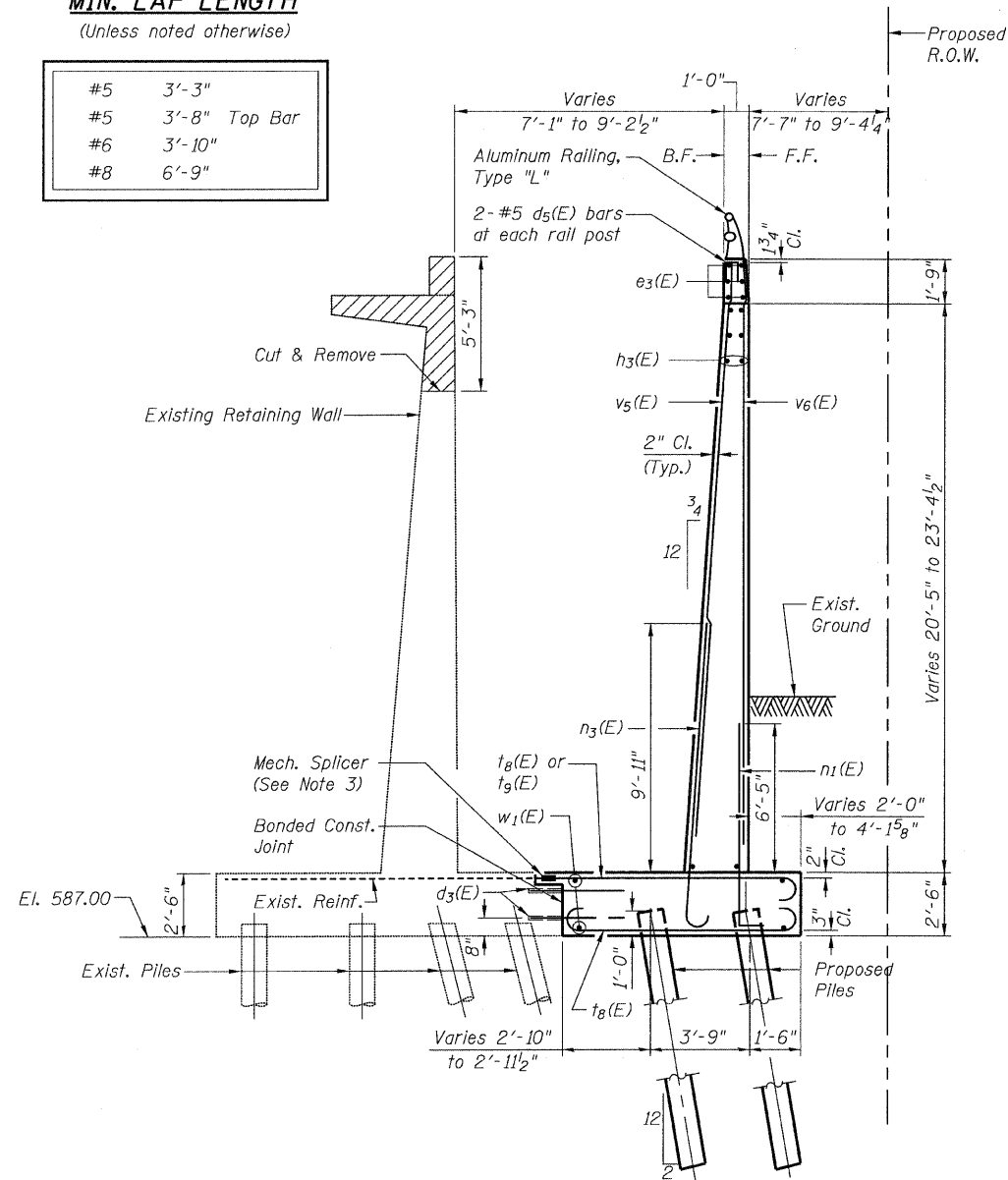


STATE OF ILLINOIS
DEPARTMENT OF TRANSPORTATION

MIN. LAP LENGTH

(Unless noted otherwise)

#5	3'-3"
#5	3'-8" Top Bar
#6	3'-10"
#8	6'-9"

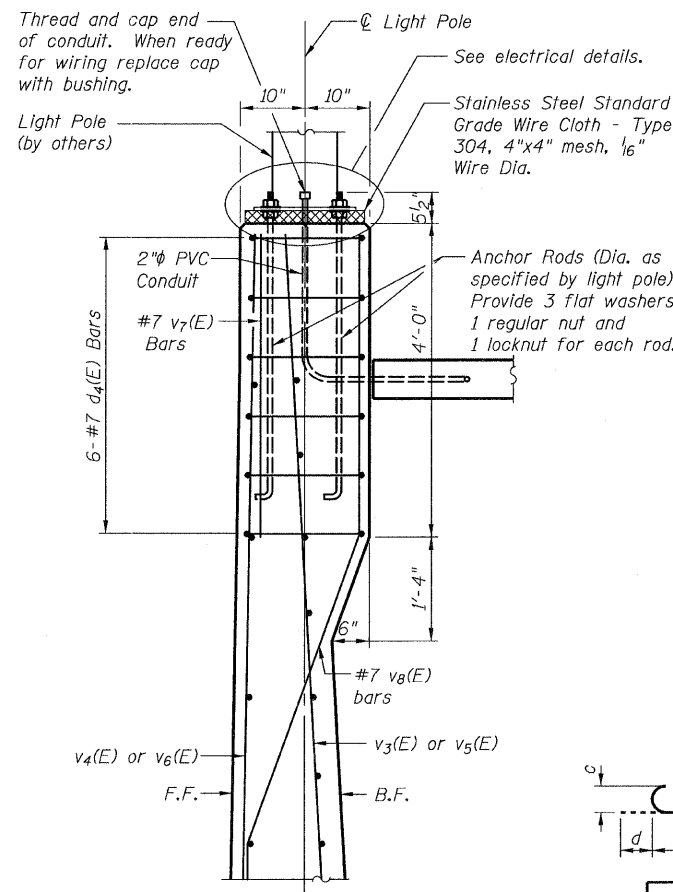


SECTION E-E

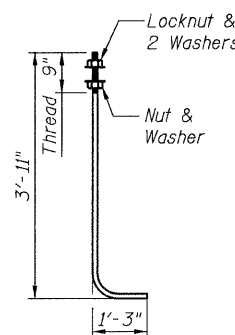
Sta.12+89.16 to Sta.13+74.66

NOTES

- Epoxy grout d₃(E) bars according to Article 584 of the Standard Specifications. Drill to miss existing reinforcement. The epoxy grout and method of application shall be approved by the Engineer. All work shall be included in the Unit Bid Price for "Reinforcement Bars, Epoxy Coated."
- Cost of anchor bolts and conduit is included with concrete superstructure.
- Localized concrete removal as required to permit mechanical splicing of bars shown. Cost included with Concrete Removal.
- Existing reinforcement shall be cleaned and incorporated into new construction. Cost included with Concrete Removal.

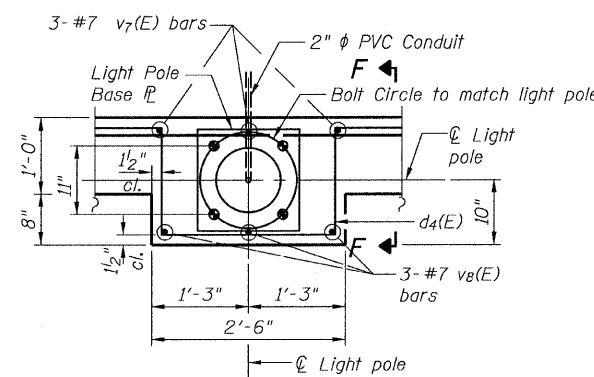


SECTION F-F

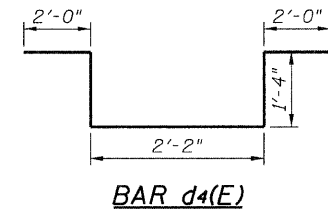


ANCHOR ROD

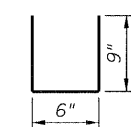
Diameter as specified for light poles (ASTM F 1554 Grade 105)



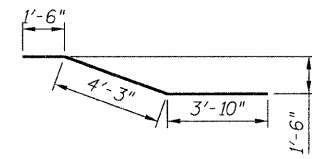
PLAN-LIGHT POLE SUPPORT



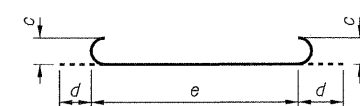
BAR d4(E)



BAR d5(E)

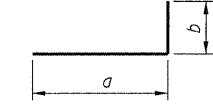


BAR v8(E)



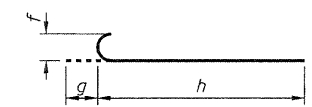
Bar	c	d	e
t(E)	7"	10"	4'-7"
t ₂ (E)	7"	10"	4'-4"
t ₄ (E)	7"	10"	3'-10"
t ₆ (E)	8"	11"	5'-9"
t ₈ (E)	11 ³ / ₄ "	15"	7'-9"

BAR t(E), t₂(E), t₄(E), t₆(E) & t₈(E)



Bar	a	b
e(E)	4'-11"	2'-2"
e ₁ (E)	5'-7"	2'-2"
h(E)	4'-11"	2'-2"
h ₁ (E)	5'-7"	2'-2"
n ₁ (E)	8'-8"	10"

BARS e(E), e₁(E), h(E), h₁(E) & n₁(E)



Bar	f	g	h
n(E)	7"	10"	9'-3"
n ₂ (E)	8"	11"	9'-3"
n ₃ (E)	8"	11"	12'-2"
t ₁ (E)	7"	10"	4'-11"
t ₃ (E)	7"	10"	4'-8"
t ₅ (E)	7"	10"	4'-2"
t ₇ (E)	8"	11"	6'-1"
t ₉ (E)	11 ³ / ₄ "	15"	8'-1"

BAR n(E), n₂(E), n₃(E), t₁(E), t₃(E), t₅(E), t₇(E) & t₉(E)

BILL OF MATERIAL

Bar	No.	Size	Length	Shape
d(E)	93	#7	3'-5"	—
d ₁ (E)	6	#7	6'-2"	—
d ₂ (E)	272	#8	4'-3"	—
d ₃ (E)	173	#9	5'-4"	—
d ₄ (E)	12	#7	8'-10"	—
d ₅ (E)	82	#5	2'-0"	—
e(E)	3	#5	7'-1"	—
e ₁ (E)	3	#5	7'-9"	—
e ₂ (E)	6	#5	8'-8"	—
e ₃ (E)	24	#5	28'-2"	—
e ₄ (E)	42	#5	32'-0"	—
h(E)	14	#5	7'-1"	—
h ₁ (E)	14	#5	7'-9"	—
h ₂ (E)	28	#5	8'-8"	—
h ₃ (E)	148	#5	28'-2"	—
h ₄ (E)	270	#5	32'-0"	—
n(E)	199	#7	10'-1"	—
n ₁ (E)	328	#5	9'-6"	—
n ₂ (E)	132	#8	10'-2"	—
n ₃ (E)	174	#8	13'-1"	—
t(E)	80	#7	6'-3"	—
t ₁ (E)	81	#7	5'-9"	—
t ₂ (E)	68	#7	6'-0"	—
t ₃ (E)	61	#7	5'-6"	—
t ₄ (E)	24	#7	5'-6"	—
t ₅ (E)	7	#7	5'-0"	—
t ₆ (E)	171	#8	7'-7"	—
t ₇ (E)	44	#8	7'-0"	—
t ₈ (E)	173	#9	10'-3"	—
t ₉ (E)	44	#9	9'-4"	—
v(E)	140	#5	14'-2"	—
v ₁ (E)	132	#6	16'-2"	—
v ₂ (E)	87	#5	16'-2"	—
v ₃ (E)	132	#6	18'-10"	—
v ₄ (E)	87	#5	18'-10"	—
v ₅ (E)	87	#8	21'-10"	—
v ₆ (E)	87	#5	21'-10"	—
v ₇ (E)	6	#7	3'-10"	—
v ₈ (E)	6	#7	9'-7"	—
w(E)	24	#5	36'-2"	—
w ₁ (E)	132	#5	32'-1"	—
Test Pile Metal Shells	Each		2	
Concrete Structures	Cu Yd		668.9	
Reinforcement Bars, Epoxy Coated	Pound		80,660	
Furnishing Metal Pile Shells, 12"x0.25"	Foot		5,356	
Driving Piles	Foot		5,356	
Protective Coat	Sq Yd		607	

LEGEND

- F.F. - denotes Front Face
- B.F. - denotes Back Face
- E.F. - denotes Each Face

Concrete Removal

**WALL CROSS-SECTIONS AND DETAILS 3
STRUCTURE NO. 016-W821**

TYLIN INTERNATIONAL	DESIGNED - MMB	REVISIONS	
	CHECKED - AMD,	NAME	DATE
	DRAWN - MMB		
	CHECKED - AMD,		
	DATE - 03/25/2011		

SHEET NO. 10 16 SHEETS	F.A.I RTE.	SECTION	COUNTY	TOTAL SHEETS	SHEET NO.
	55	0711.2R & 1011.1BR	COOK	741	686
	CONTRACT NO. 60999				
FED. ROAD DIST. NO. 1 ILLINOIS FED. AID PROJECT					

4:25:49 PM
p:\01345\structure\Retaining Wall\ret59walsect3.dgn
5/10/2011 2:25:24 PM