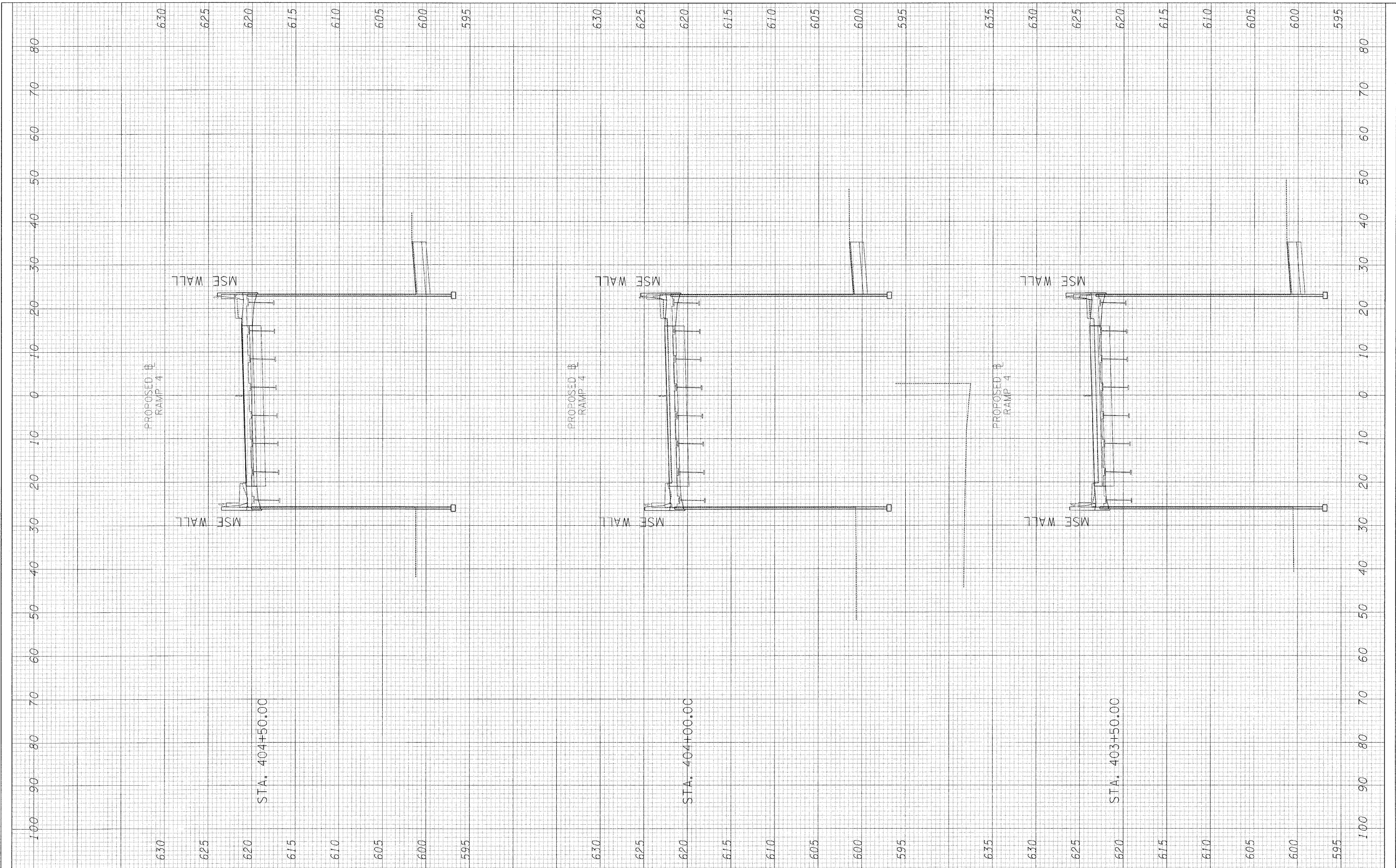


FINAL SURVEY	DATE
SURVEYED	BY
NOTE BOOK	
TEMPLATE	
AREAS CHECKED	
NO.	

ORIGINAL SURVEY	DATE
SURVEYED	BY
NOTE BOOK	
TEMPLATE	
AREAS CHECKED	
NO.	



FILE NAME =	USER NAME = #USER#	DESIGNED - JPM	REVISED -	<b>STATE OF ILLINOIS DEPARTMENT OF TRANSPORTATION</b>	<b>CENTRAL AVENUE OVER I-55 CROSS SECTIONS - RAMP 4</b>		F.A. RTE.	SECTION	COUNTY	TOTAL SHEETS	SHEET NO.	
#FILE#		DRAWN - JPM	REVISED -		SCALE:	SHEET NO. 1 OF 6 SHEETS	STA.	TO STA.	55	9H, HB & SBIR-1	COOK	741 736
		CHECKED - AZ	REVISED -									
		DATE - 03/25/2011	REVISED -									
							FED. ROAD DIST. NO.		ILLINOIS FED. AID PROJECT		CONTRACT NO. 60999	

p:\01345\ROAD\55xssh\_SB\_ramp.dgn