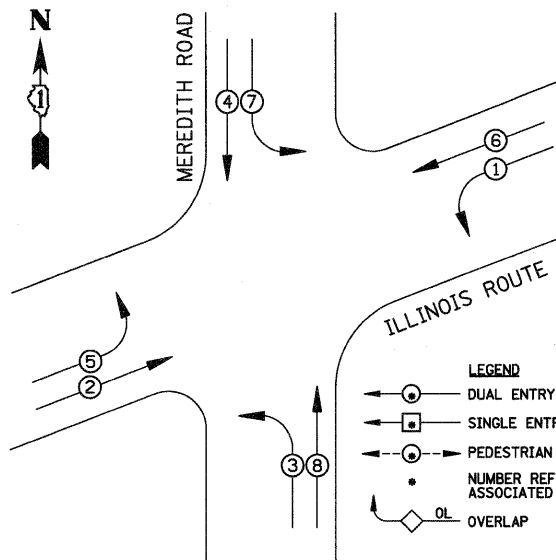


CONTROLLER SEQUENCE



PHASE DESIGNATION DIAGRAM

PHASE DESIGNATION DIAGRAM

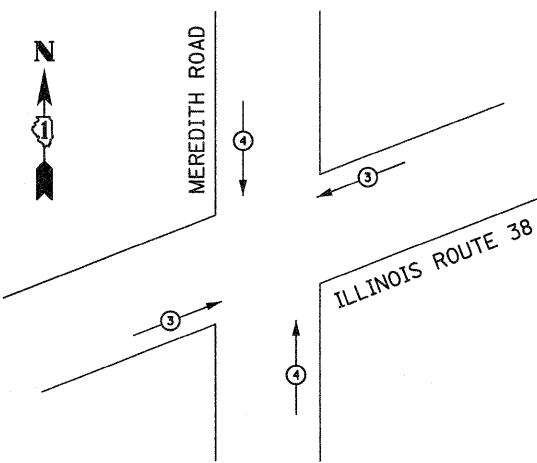
RIGHT TURN OVERLAP DESIGNATION
 OVERLAP PERMISSIVE PROTECTED
 LETTER PHASE PHASE
 C = 6 + 7

SCHEDULE OF QUANTITIES

SIGN PANEL, TYPE 1	SQ FT	32
CONDUIT IN TRENCH, 2" DIA., GALVANIZED STEEL	FOOT	485
CONDUIT IN TRENCH, 2 1/2" DIA., GALVANIZED STEEL	FOOT	40
CONDUIT IN TRENCH, 3" DIA., GALVANIZED STEEL	FOOT	158
CONDUIT IN TRENCH, 4" DIA., GALVANIZED STEEL	FOOT	83
CONDUIT PUSHED, 2" DIA., GALVANIZED STEEL	FOOT	253
CONDUIT PUSHED, 4" DIA., GALVANIZED STEEL	FOOT	318
TRENCH AND BACKFILL FOR ELECTRICAL WORK	FOOT	766
MAINTENANCE OF EXISTING FLASHING BEACON INSTALLATION	EACH	1
FULL-ACTUATED CONTROLLER AND TYPE IV CABINET	EACH	1
ELECTRIC CABLE IN CONDUIT, SIGNAL NO. 14 3C	FOOT	432
ELECTRIC CABLE IN CONDUIT, SIGNAL NO. 14 5C	FOOT	1082
ELECTRIC CABLE IN CONDUIT, SIGNAL NO. 14 7C	FOOT	1962
ELECTRIC CABLE IN CONDUIT, SERVICE, NO. 6 2C	FOOT	138
ELECTRIC CABLE IN CONDUIT, LEAD-IN, NO. 14 1 PAIR	FOOT	1977
HANDHOLE	EACH	4
HEAVY DUTY HANDHOLE	EACH	6
DOUBLE HANDHOLE	EACH	1
SPAN WIRE	FOOT	147
TRAFFIC SIGNAL POST, GALVANIZED STEEL 16 FT.	EACH	4
STEEL MAST ARM ASSEMBLY AND POLE, 36 FT.	EACH	1
STEEL MAST ARM ASSEMBLY AND POLE, 40 FT.	EACH	2
STEEL MAST ARM ASSEMBLY AND POLE, 44 FT.	EACH	1
CONCRETE FOUNDATION, TYPE A	FOOT	16
CONCRETE FOUNDATION, TYPE C	FOOT	4
CONCRETE FOUNDATION, TYPE E 36-INCH DIAMETER	FOOT	46
SIGNAL HEAD, LED, 1-FACE, 3-SECTION, MAST-ARM MOUNTED	EACH	4
SIGNAL HEAD, LED, 1-FACE, 5-SECTION, BRACKET MOUNTED	EACH	4
SIGNAL HEAD, LED, 1-FACE, 5-SECTION, MAST-ARM MOUNTED	EACH	4
TRAFFIC SIGNAL BACKPLATE, LOUVERED, ALUMINUM	EACH	8
INDUCTIVE LOOP DETECTOR	EACH	8
DETECTOR LOOP, TYPE 1	FOOT	772
LIGHT DETECTOR	EACH	2
LIGHT DETECTOR AMPLIFIER	EACH	1
RELOCATE EXISTING FLASHING BEACON	EACH	1
REMOVE EXISTING FLASHING BEACON INSTALLATION COMPLETE	EACH	1
TEMPORARY WOOD POLE, 45 FEET, CLASS 5	EACH	1
SERVICE INSTALLATION, POLE MOUNT	EACH	1
ELECTRIC CABLE IN CONDUIT, GROUNDING, NO. 6 1C	FOOT	658
ELECTRIC CABLE IN CONDUIT, NO. 20 3/C, TWISTED & SHIELDED	FOOT	432
UNINTERRUPTIBLE POWER SUPPLY	EACH	1

• 100% COST TO ELBURN AND COUNTRYSIDE FIRE PROTECTION DISTRICT

EMERGENCY VEHICLE PREEMPTION SEQUENCE



PROPOSED EMERGENCY VEHICLE PREEMPTOR			
EMERGENCY VEHICLE PREEMPTOR	3	4	
MOVEMENT	←	→	↑

I.D.O.T TRAFFIC SIGNAL INSTALLATION ELECTRICAL SERVICE REQUIREMENTS					TOTAL WATTAGE
TYPE	NO. LAMPS	WATTAGE INCAND.	WATTAGE LED	%OPERATION	
SIGNAL (RED)	12	135	17	0.50	102
(YELLOW)	12	135	25	0.25	75
(GREEN)	12	135	15	0.25	45
ARROW	16	135	12	0.10	19.2
PED. SIGNAL	-	90	25	1.00	200
CONTROLLER	1	100	100	1.00	100
ILLUM. SIGN		84		0.05	

FLASHER 0.50
 ENERGY COSTS TO: ILLINOIS DEPARTMENT OF TRANSPORTATION
 201 W. CENTER COURT
 SCHAUMBURG, IL 60196
 TOTAL = 341.2

ENERGY SUPPLY CONTACT: _____
 PHONE: _____
 COMPANY: COMED

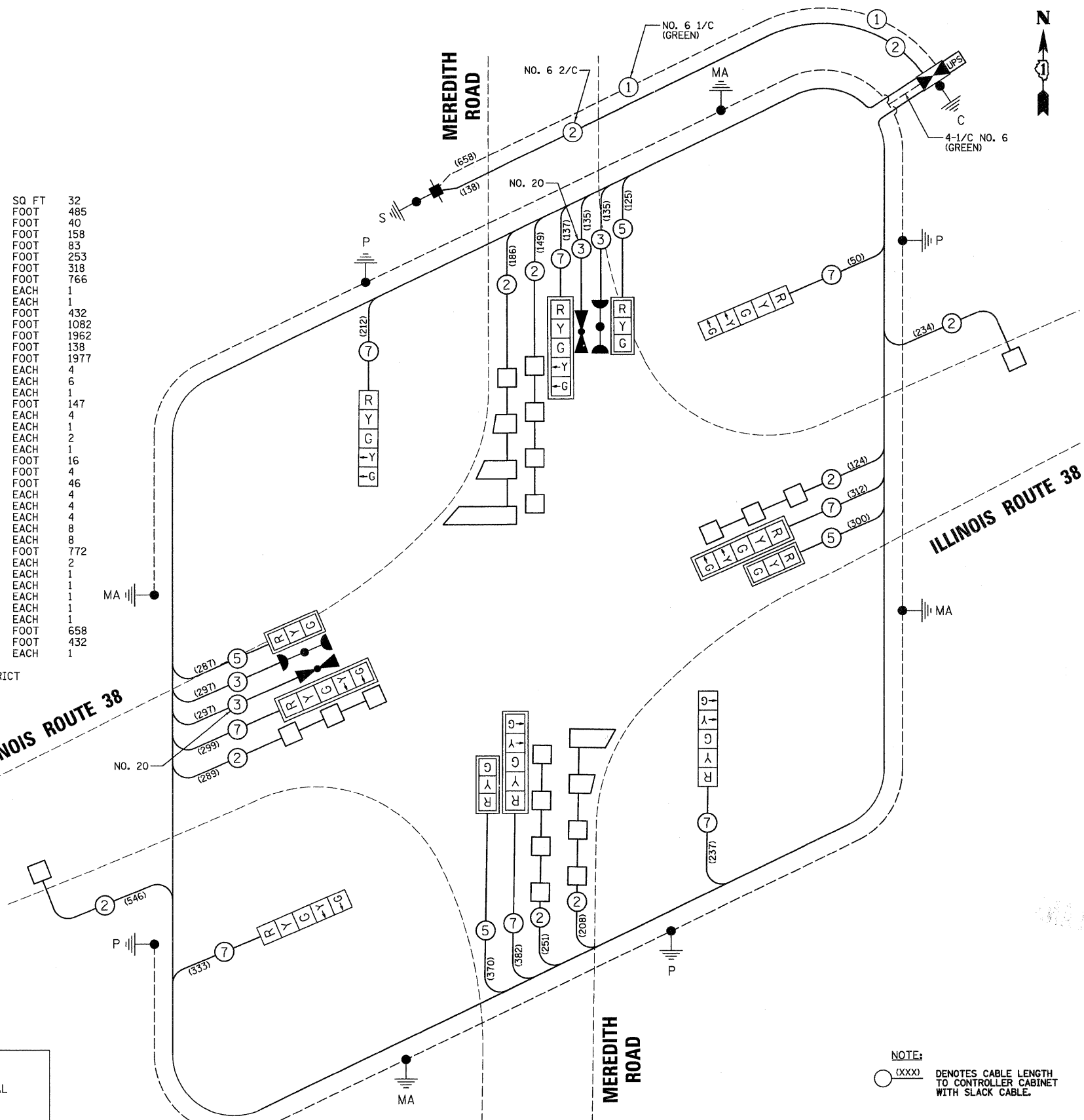
RESTORATION OF WORK AREA

RESTORATION OF THE TRAFFIC SIGNAL WORK AREA SHALL BE INCIDENTAL TO THE RELATED PAY ITEM SUCH AS FOUNDATION, CONDUIT, HANDHOLE, TRENCH AND BACKFILL, ETC., AND NO EXTRA COMPENSATION SHALL BE ALLOWED. ALL ROADWAY SURFACES SUCH AS SHOULDERS, MEDIANS, SIDEWALKS, PAVEMENT, ETC. SHALL BE REPLACED IN KIND. ALL DAMAGE TO MOWED LAWNS SHALL BE REPLACED WITH AN APPROVED SOD, AND ALL DAMAGE TO UNMOWED FIELDS SHALL BE SEEDED IN ACCORDANCE WITH STANDARD SPECIFICATIONS 252 AND 250 RESPECTIVELY.

ILLINOIS ROUTE 38

MEREDITH ROAD

CABLE PLAN



NOTE: (XXX) DENOTES CABLE LENGTH TO CONTROLLER CABINET WITH SLACK CABLE.

FILE NAME = \MICROST\352892\RTS 38 CAB.DGN	USER NAME = RDS	DESIGNED - KK	REVISED -
		DRAWN - RDS	REVISED -
		CHECKED - BPT	REVISED -
		DATE - 1-27-11	REVISED -

DESIGNED - KK	REVISED -
DRAWN - RDS	REVISED -
CHECKED - BPT	REVISED -
DATE - 1-27-11	REVISED -

STATE OF ILLINOIS
 DEPARTMENT OF TRANSPORTATION

SCHEDULE OF QUANTITIES, CABLE PLAN
 ILLINOIS ROUTE 38 AT MEREDITH ROAD

SCALE: N.T.S. SHEET NO. OF SHEETS STA. TO STA.

PREPARED BY:
CEMCON, Ltd.
 Consulting Engineers, Land Surveyors & Planners
 2280 White Oak Circle, Suite 100
 Aurora, Illinois 60504-9675
 Ph: 630.862.2100 Fax: 630.862.2199
 E-Mail: cadd@cemcon.com Website: www.cemcon.com

F.A.P. RTE.	SECTION	COUNTY	TOTAL SHEETS	SHEET NO.
567	5 R-N-1	KANE	77	40
CONTRACT NO. 60K65				
FED. ROAD DIST. NO. ILLINOIS FED. AID PROJECT				