

F.A.U. RTE.	SECTION	COUNTY	TOTAL SHEETS	SHEET NO.
2688	44 R-N	COOK/WILL	68	1
FED. ROAD DIST. NO. 1	ILLINOIS	CONTRACT NO. 60K66		

*68+2 = 70

STATE OF ILLINOIS
DEPARTMENT OF TRANSPORTATION
DIVISION OF HIGHWAYS

FOR INDEX OF SHEETS, SEE SHEET NO. 2

PROJECT IS LOCATED IN THE
VILLAGE OF ORLAND PARK

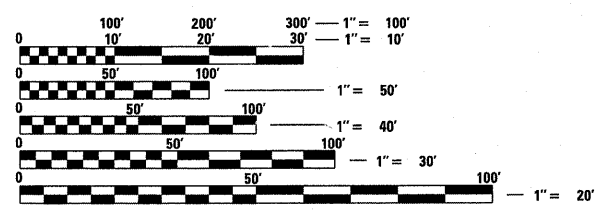
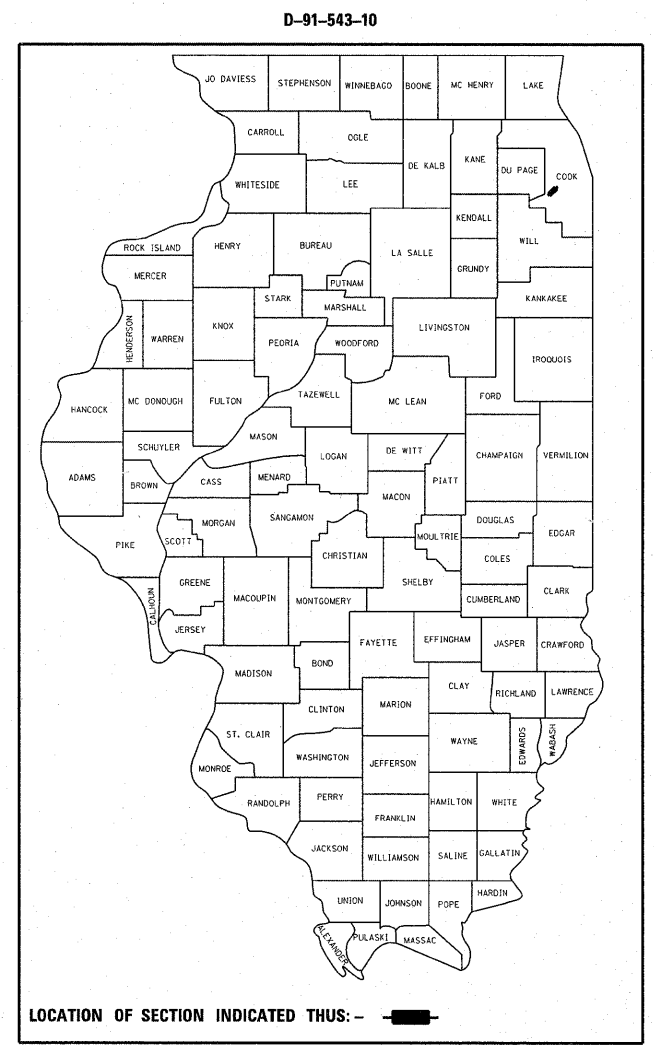
PROPOSED HIGHWAY PLANS

FAU 2688: WOLF ROAD
AT 183RD STREET/ORLAND PARKWAY
SECTION: 44 R-N

INTERSECTION IMPROVEMENT AND
NEW TRAFFIC SIGNAL INSTALLATION

PROJECT NO.: HSIP-2688(002)

COUNTY: COOK & WILL
C-91-543-10

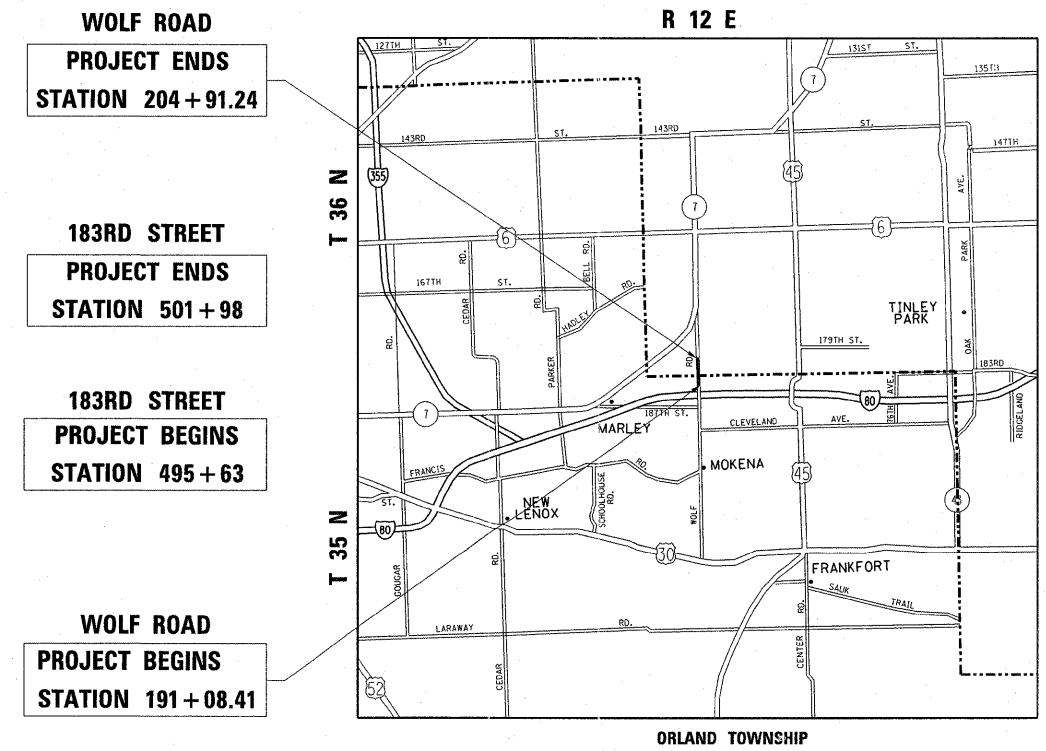


FULL SIZE PLANS HAVE BEEN PREPARED USING STANDARD ENGINEERING SCALES. REDUCED SIZED PLANS WILL NOT CONFORM TO STANDARD SCALES. IN MAKING MEASUREMENTS ON REDUCED PLANS, THE ABOVE SCALES MAY BE USED.

J.U.L.I.E.
JOINT UTILITY LOCATION INFORMATION FOR EXCAVATION
1-800-892-0123 (OR 811)

PROJECT ENGINEER: JENPAI P. CHANG (847) 705 - 4432
PROJECT MANAGER: KEN ENG

CONTRACT NO. 60K66



WOLF ROAD: GROSS AND NET LENGTH OF PROJECT = 1382.83 FEET = 0.26 MILE
183RD STREET: GROSS AND NET LENGTH OF PROJECT = 635 FEET = 0.12 MILE

TRAFFIC DATA:

WOLF ROAD:
2008 ADT = 15,600
SPEED LIMIT = 45 MPH

183RD STREET:
2008 ADT = 1,600
SPEED LIMIT = 20 MPH

STATE OF ILLINOIS
DEPARTMENT OF TRANSPORTATION
DIVISION OF HIGHWAYS

SUBMITTED MARCH 24, 2011

Diana M. O'Keefe
DEPUTY DIRECTOR OF HIGHWAYS, REGION ENGINEER

May 13 2011
Scott E. Stitt P.E. J.A.
ENGINEER OF DESIGN AND ENVIRONMENT

May 13 2011
Christine M. Reed J.A.
DIRECTOR OF HIGHWAYS, CHIEF ENGINEER

**PRINTED BY THE AUTHORITY
OF THE STATE OF ILLINOIS**