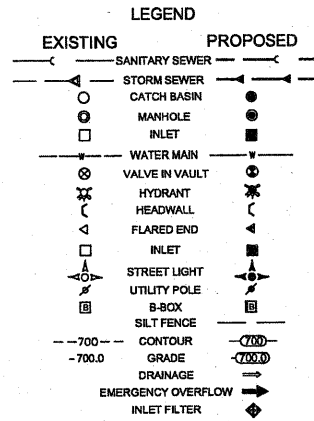
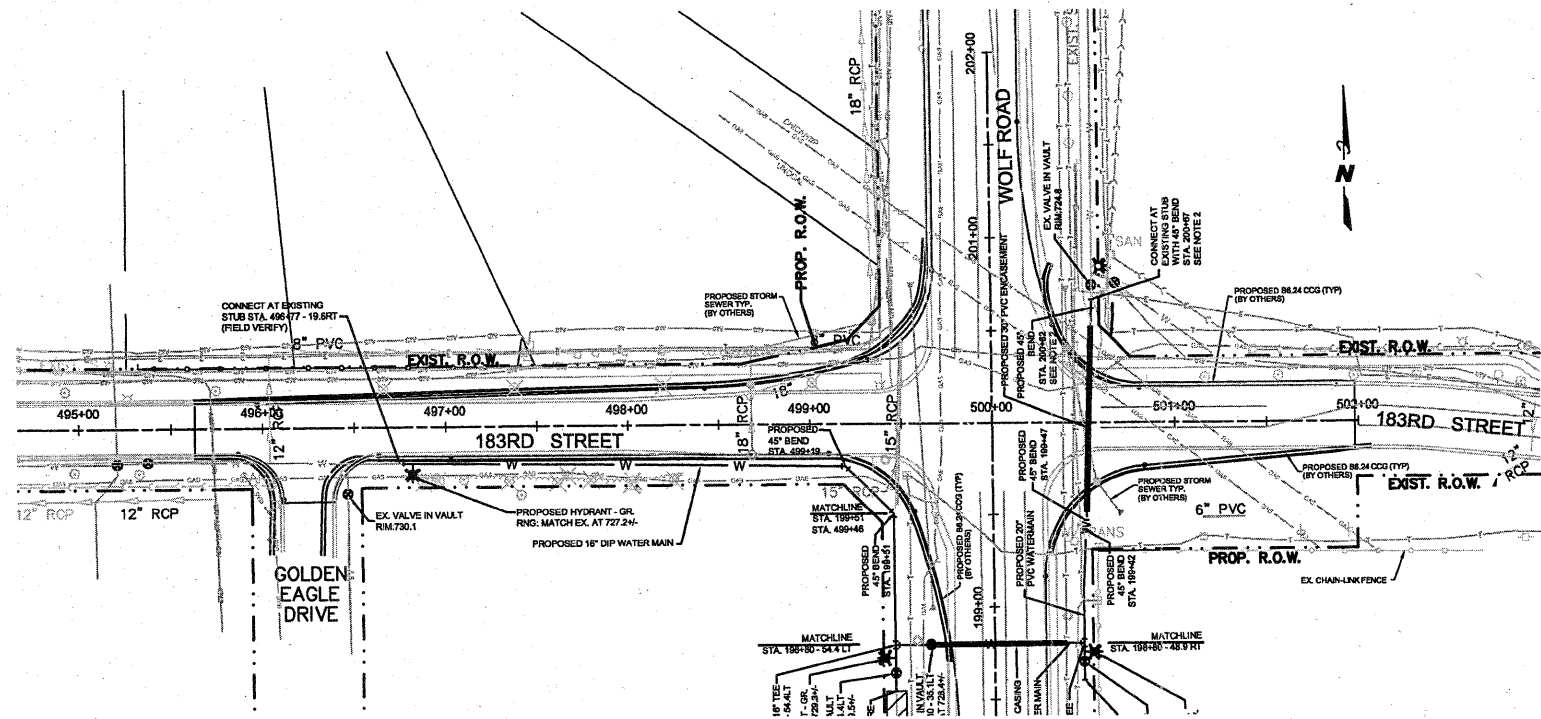


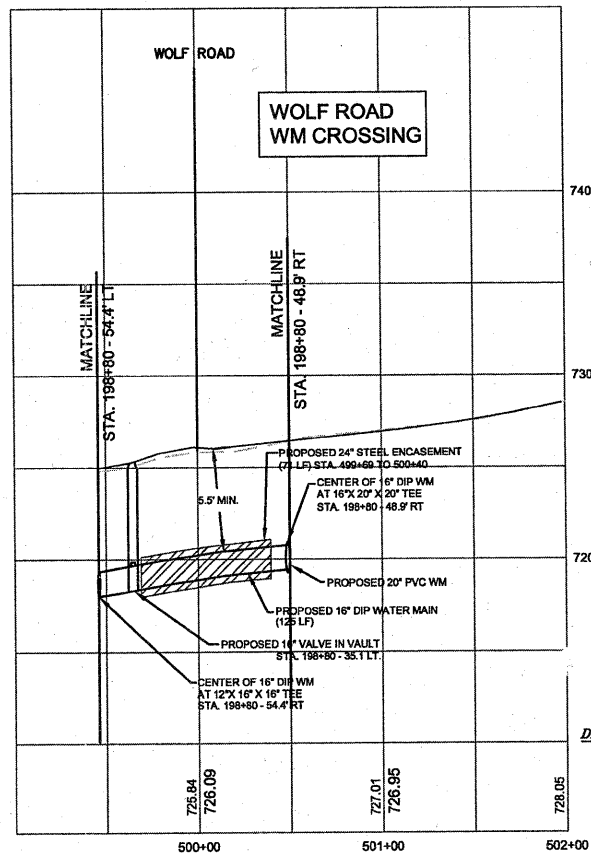
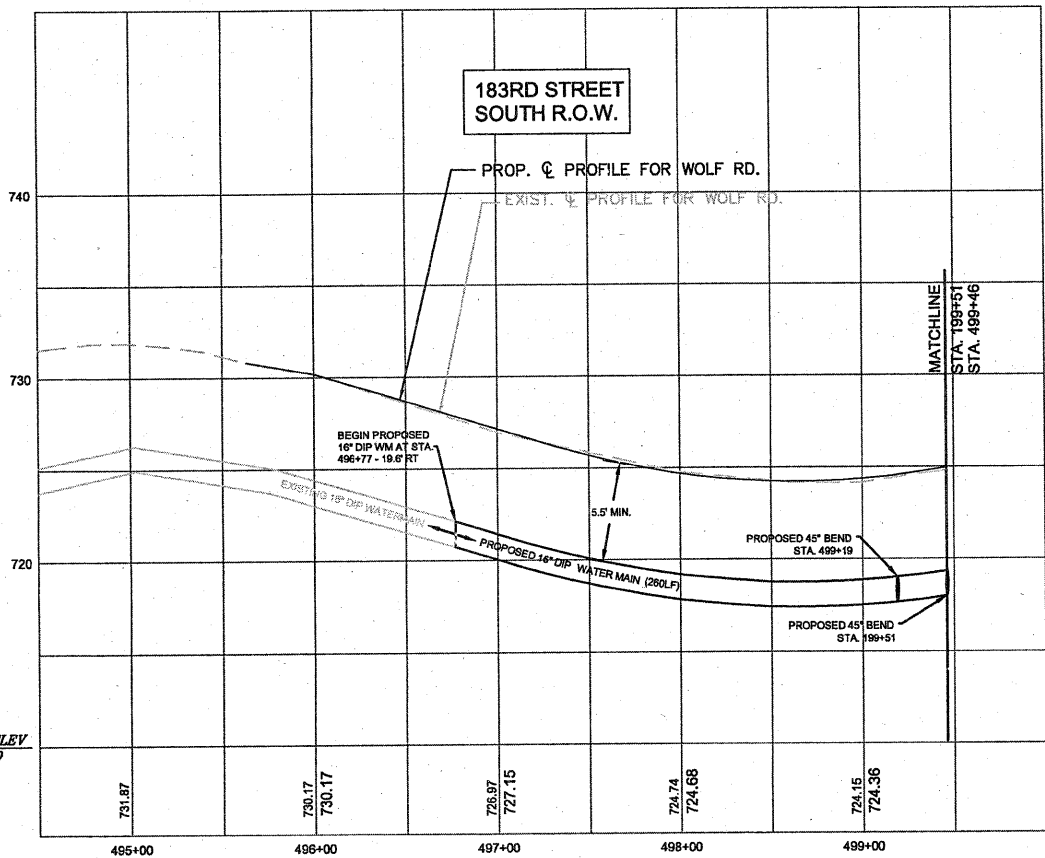
H:\2010.0034 - Orland Park 183rd and Wolf Watermain.dwg\Plan&Profile.dwg, 5/9/2011 12:51:53 PM



RECEIVED
MAY 10 2011

DIST. ONE - DESIGN

- PLAN NOTES:
1. TOPOGRAPHIC DATA WAS PROVIDED BY DOT.
 2. 45 DEGREE BENDS AT STA. 200+42 & 200+47 MAY BE PVC OR EPOXY COATED FITTINGS WITH STAINLESS STEEL NUTS AND BOLTS.
 3. REFER TO PLAN VIEW FOR FIRE HYDRANT LOCATIONS.



SUMMARY OF QUANTITIES

CODE NUMBER	PAY ITEM	UNIT	TOTAL QUANTITY	CONSTRUCTION TYPE CODE
				1000-2A
1	DUCTILE IRON WATER MAIN, 12"	LF	25	
2	DUCTILE IRON WATER MAIN, 16"	LF	454	
3	PVC C900 WATER MAIN, 20"	LF	207	
4	STEEL ENCASUREMENT PIPE, 24"	LF	71	
5	PVC ENCASUREMENT, 30"	LF	100	
6	48" VAULT WITH 12" VALVE	EA	1	
7	60" VAULT WITH 16" VALVE	EA	1	
8	60" VAULT WITH 20" VALVE	EA	1	
9	45" DUCTILE IRON BEND, 16"	EACH	2	
10	45" PVC BEND, 20"	EACH	4	
11	12" X 16" X 16" DUCTILE IRON TEE	EACH	1	
12	20" X 20" X 16" DUCTILE IRON TEE	EACH	1	
13	PIPE HYDRANT	EA	3	
14	REMOVE & REPLACE TOPSOIL, 3"	L.SUM	1	
15	SEEDING - CORNER CROP	L.SUM	1	
16	EROSION & SEDIMENTATION CONTROL	L.SUM	1	
17	PAVEMENT REMOVAL AND REPLACEMENT	L.SUM	1	
18	MOBILIZATION	L.SUM	1	
19	TRAFFIC CONTROL	L.SUM	1	

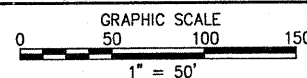
* DENOTES SPECIALTY ITEMS

FOR INFORMATION ONLY

TOTAL SHEETS 68
SHEET NO. 24A

DESIGN BY:	DLJ	NO.	DATE	REVISIONS	DES. DRW. CHK. NO.	DATE	REVISIONS	DES. DRW. CHK.
DRAWN BY:	DLJ	1	01-27-11	DIVIDE PLAN & PROFILE VIEWS PER TDW				
CHECKED BY:	MDB	2	02/16/11	PER VILLAGE REVIEW				
APPROVED BY:	TDW							
REVISION #								

McDONOUGH ASSOCIATES INC.
ENGINEERS ARCHITECTS
16634 S. 107TH COURT
ORLAND PARK, ILLINOIS 60467-8898
(708) 226-0261



14700 Ravinia Avenue
Orland Park, IL 60462
Ph. (708)403-6100

WATER MAIN IMPROVEMENTS
WOLF RD and 183RD ST

PLAN & PROFILE
183RD STREET

DATE: 05/09/11 SCALE: 1"=50' HORIZ
1"=5' VERT

MAI JOB NO.
2010.0034
DRAWING NO.
3
OF 11 SHEETS