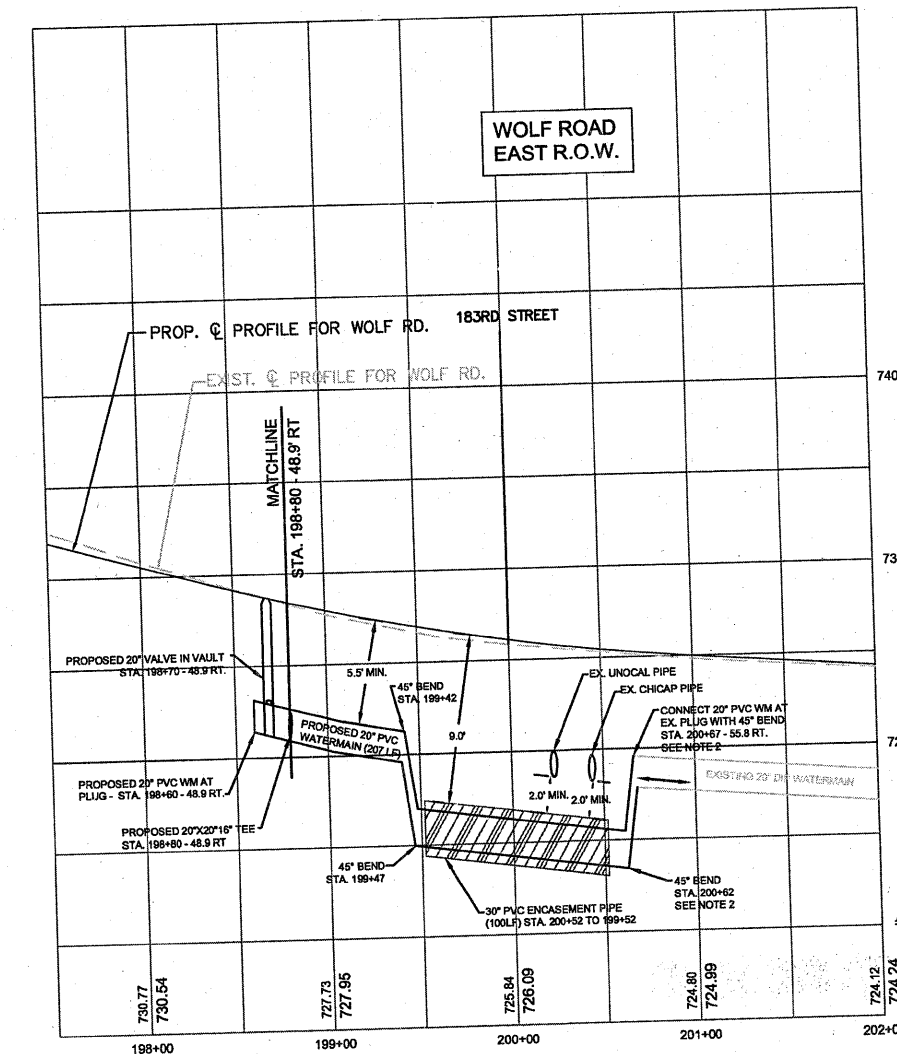
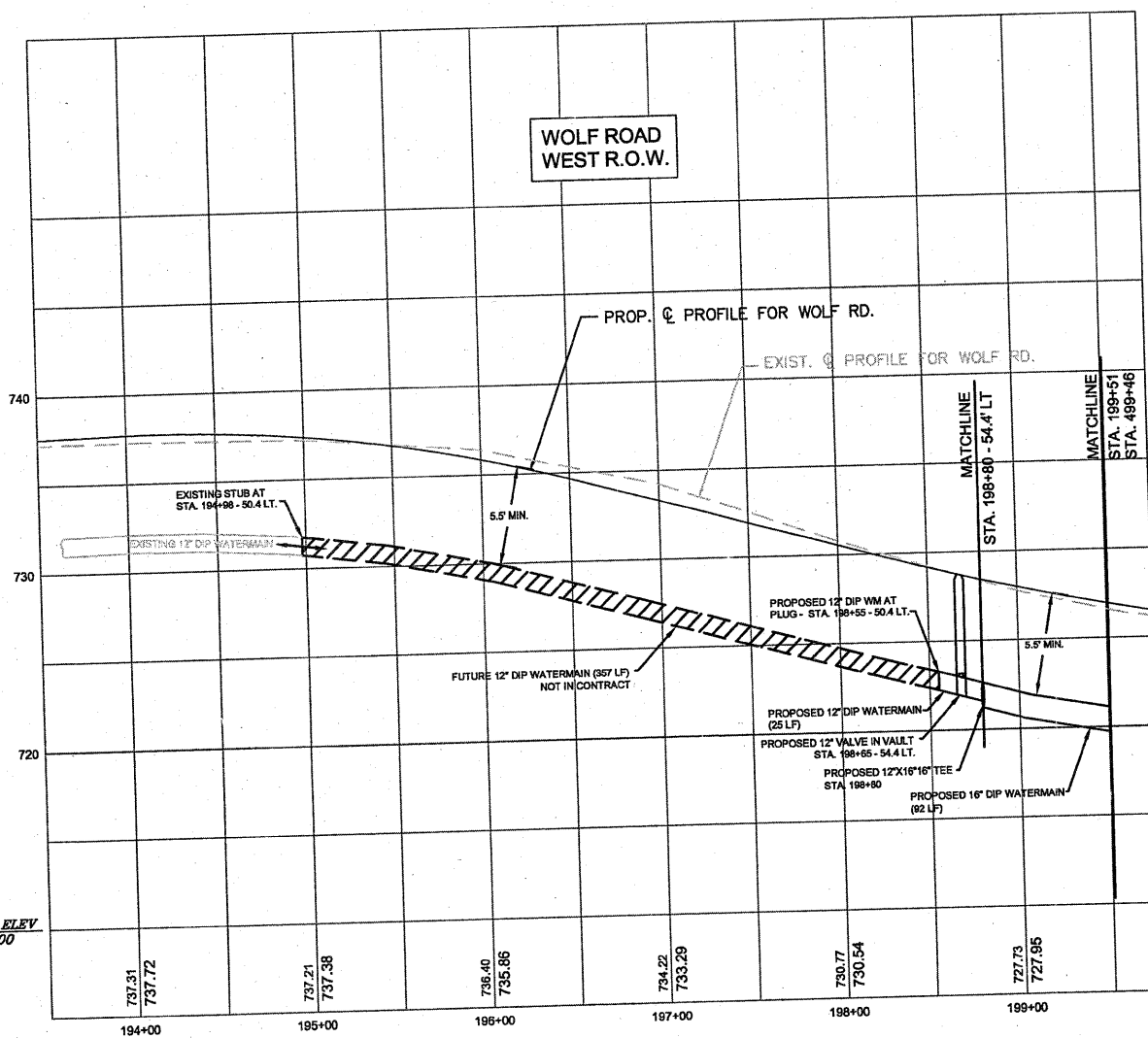
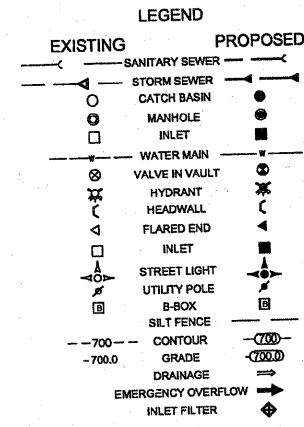
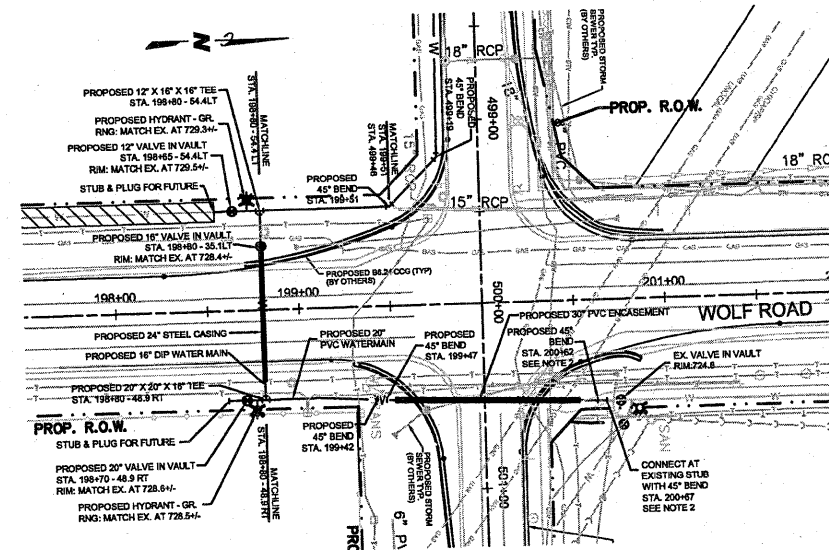
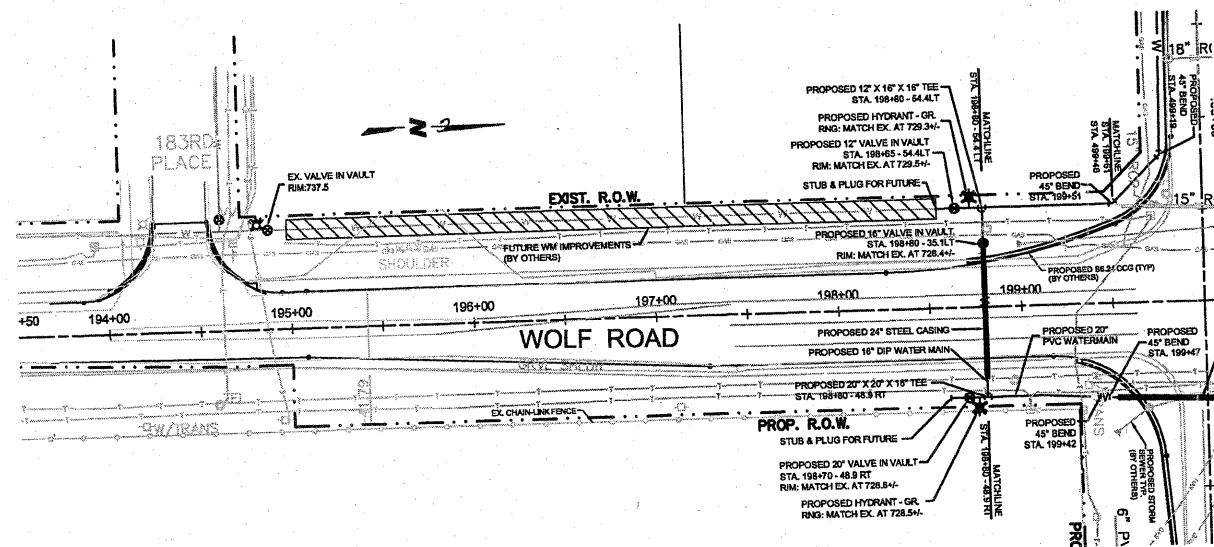


H:\2010.0034 - Orland Park 183rd and Wolf Watermain\dwg\Plan&Profile.dwg, 5/9/2011 12:52:36 PM



- PLAN NOTES:
1. TOPOGRAPHIC DATA WAS PROVIDED BY IDOT.
  2. 45 DEGREE BENDS AT STA. 200+62 & 200+67 MAY BE PVC OR EPOXY COATED FITTINGS WITH STAINLESS STEEL NUTS AND BOLTS.
  3. REFER TO PLAN VIEW FOR FIREHYDRANT LOCATIONS.

RECEIVED  
MAY 10 2011  
DIST. ONE - DESIGN

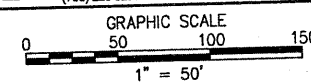
FOR INFORMATION ONLY

DATUM ELEV  
710.00

TOTAL SHEETS 68  
SHEET NO. 248

DESIGN BY:	DLJ	NO.	DATE	REVISIONS	DES.	DRW.	CHK.	NO.	DATE	REVISIONS	DES.	DRW.	CHK.
DRAWN BY:	DLJ	1	01-27-11	DIVIDE PLAN & PROFILE VIEWS PER TDW									
CHECKED BY:	MDB	2	02/16/11	PER VILLAGE REVIEW									
APPROVED BY:	TDW												
REVISION #													

McDONOUGH ASSOCIATES INC.  
ENGINEERS ARCHITECTS  
16834 S. 107TH COURT  
ORLAND PARK, ILLINOIS 60467-8898  
(708) 226-9261



Orland Park, Illinois  
14700 Ravinia Avenue  
Orland Park, IL 60462  
Ph. (708)403-6100

WATER MAIN IMPROVEMENTS  
WOLF RD and 183RD ST  
PLAN & PROFILE  
WOLF ROAD

DATE: 05/09/11 SCALE: 1"=50' HORIZ  
1"=5' VERT

MAI JOB NO.  
2010.0034  
DRAWING NO.  
4  
OF 11 SHEETS