

PART OF SECTION 31 & 32, TOWNSHIP 36 NORTH, RANGE 12 AND PART OF SECTION 6, TOWNSHIP 35 NORTH, RANGE 12 EAST OF THE THIRD PRINCIPAL MERIDIAN, IN COOK/WILL COUNTY, ILLINOIS

PARCEL NO.	OWNER	TOTAL HOLDING	PART TAKEN	REMAINDER	PREVIOUS DEDICATION	EASEMENT	EASEMENT PURPOSE	TAX NUMBER(S)	ACQUIRED BY
		(ACRES) SQ. FEET	(ACRES) SQ. FEET	(ACRES) SQ. FEET	(ACRES) SQ. FEET	(ACRES) SQ. FEET			
OHA0001	Kenneth Surma and Susan Surma, as husband and wife, as Tenants by the Entirety	(0.710)	(0.017)	(0.693)	N/A	N/A	N/A	27-31-409-038	
OHA0002	Parkview Christian Church of Orland Park, formerly known as Tinley Park Christian Church, an Illinois not-for-profit corporation	(15.987)	(0.003) 144	(15.984)	N/A	N/A	N/A	27-32-313-005	
OHA0003	Orland Parkway, LLC	(1.635)	(0.005) 220	(1.630)	N/A	N/A	N/A	09-06-202-001	

PROJECT COORDINATES FOR PROPOSED R.O.W.				
POINT NUMBER	STATION	OFFSET	NORTHING	EASTING
5100	STA.=498+62.95	33.29' LEFT	1781549.3331	1105391.8821
5101	STA.=499+20.90	45.80' LEFT	1781563.1378	1105449.5382
5102	STA.=499+38.83	64.31' LEFT	1781582.0375	1105467.0469
5102	STA.=200+64.60 *	60.87' LEFT	1781582.0375	1105467.0469
5103	STA.=500+58.87	53.00' LEFT	1781573.4118	1105587.3156
5103	STA.=200+52.72 *	59.12' RIGHT	1781573.4118	1105587.3156
5104	STA.=500+75.94	36.01' LEFT	1781556.8021	1105604.7586
5104	STA.=200+35.65 *	76.11' RIGHT	1781556.8021	1105604.7586
5105	STA.=499+18.21	32.70' RIGHT	1781484.5966	1105448.6012
5105	STA.=199+67.69 *	81.94' LEFT	1781484.5966	1105448.6012
5106	STA.=499+39.26	53.69' RIGHT	1781464.0769	1105470.1153
5106	STA.=199+46.59 *	60.99' LEFT	1781464.0769	1105470.1153

PROJECT COORDINATES FOR PROPOSED CENTERLINE				
POINT NUMBER	STATION	OFFSET	NORTHING	EASTING
5000	STA.=483+15.60	0.00' RIGHT	1781481.5442	1103845.6583
5001	STA.=493+00.00	0.00' RIGHT	1781503.4978	1104829.8135
5002	STA.=500+00.00	0.00' RIGHT	1781519.1089	1105529.6397
5002	STA.=200+00.00 *	0.00' LEFT	1781519.1089	1105529.6397
5003	STA.=502+53.07	0.00' RIGHT	1781524.7528	1105782.6483
5004	STA.=502+67.06	0.00' RIGHT	1781524.2321	1105796.6142
5005	STA.=504+65.02	0.00' RIGHT	1781505.0912	1105993.6498
5006	STA.=505+59.61	0.00' RIGHT	1781501.5978	1106088.1186
5007	STA.=511+00.00	0.00' RIGHT	1781513.9805	1106628.3667
5008	STA.=515+99.95	0.00' RIGHT	1781525.4365	1107128.1867
5009	STA.=184+89.51 *	0.00' LEFT	1780009.1716	1105570.4456
5010	STA.=193+00.00 *	0.00' LEFT	1780819.3644	1105548.5502
5011	STA.=207+00.00 *	0.00' LEFT	1782218.8534	1105510.7292
5012	STA.=216+78.32 *	0.00' LEFT	1783196.8128	1105484.3000

LEGEND

SECTION CORNER (0910/1615) QUARTER SECTION CORNER (16/15)

SECTION LINE
 QUARTER SECTION LINE
 QUARTER, QUARTER SECTION LINE
 PLATTED LOT LINE
 PROPERTY (DEED) LINE
 APPARENT PROPERTY LINE
 CENTERLINE
 EXISTING RIGHT OF WAY LINE
 PROPOSED CENTERLINE
 PROPOSED RIGHT OF WAY LINE
 PROPOSED EASEMENT
 MEASURED DIMENSION
 COMPUTED DIMENSION
 RECORD DATA

EXISTING BUILDING

3/4" IRON PIPE SET OR FOUND
 "MAG" NAIL SET OR FOUND
 5/8" REBAR SET OR FOUND
 "P.K." NAIL SET OR FOUND

T1 THESE STAKES REFERENCE FOUND OR SET MONUMENTATION. SET 5/8 INCH IRON ROD FLUSH WITH GROUND TO TIE FOUND IRON STAKE. IDENTIFIED BY T3 COLORED PLASTIC CAP BEARING SURVEYORS REGISTRATION NUMBER.

BT1 THESE STAKES, IN CULTIVATED AREAS, REFERENCE FOUND OR SET MONUMENTATION. BURIED 5/8 INCH IRON ROD 20 INCHES BELOW GROUND TO TIE FOUND IRON STAKE. IDENTIFIED BY COLORED PLASTIC CAP BEARING SURVEYORS REGISTRATION NUMBER.

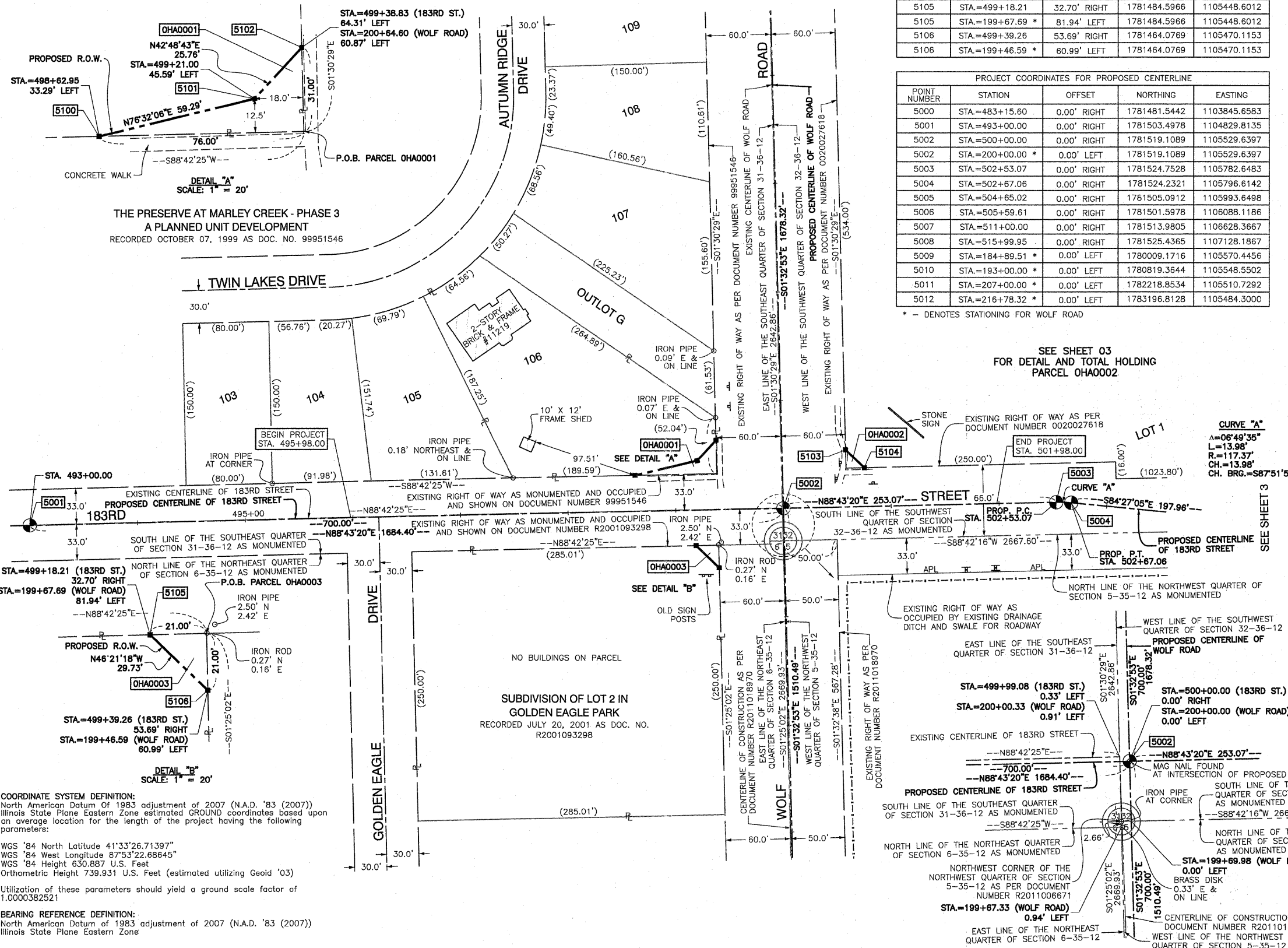
STAKING OF PROPOSED RIGHT OF WAY. SET DIVISION OF HIGHWAYS SURVEY MARKER TO MONUMENT THE POSITION SHOWN. IDENTIFIED BY INSCRIPTION DATA AND SURVEYORS REGISTRATION NUMBER.

STAKING OF PROPOSED RIGHT OF WAY IN CULTIVATED AREAS. BURIED 5/8 INCH METAL ROD 20 INCHES BELOW GROUND TO MARK FUTURE SURVEY MARKER POSITION IDENTIFIED BY COLORED PLASTIC CAP BEARING SURVEYORS REGISTRATION NUMBER.

PERMANENT SURVEY MARKER, I.D.O.T. STD 2135 (TO BE SET BY OTHERS)

RIGHT OF WAY STAKING PROPOSED TO BE SET.

SCALE: 1"=50'



SEE SHEET 03 FOR DETAIL AND TOTAL HOLDING PARCEL OHA0002

SEE SHEET 04 FOR DETAIL AND TOTAL HOLDING PARCEL OHA0003

SEE SHEET 05 FOR DETAIL AND TOTAL HOLDING PARCEL OHA0004

SEE SHEET 06 FOR DETAIL AND TOTAL HOLDING PARCEL OHA0005

SEE SHEET 07 FOR DETAIL AND TOTAL HOLDING PARCEL OHA0006

SEE SHEET 08 FOR DETAIL AND TOTAL HOLDING PARCEL OHA0007

SEE SHEET 09 FOR DETAIL AND TOTAL HOLDING PARCEL OHA0008

SEE SHEET 10 FOR DETAIL AND TOTAL HOLDING PARCEL OHA0009

SEE SHEET 11 FOR DETAIL AND TOTAL HOLDING PARCEL OHA0010

SEE SHEET 12 FOR DETAIL AND TOTAL HOLDING PARCEL OHA0011

SEE SHEET 13 FOR DETAIL AND TOTAL HOLDING PARCEL OHA0012

SEE SHEET 14 FOR DETAIL AND TOTAL HOLDING PARCEL OHA0013

SEE SHEET 15 FOR DETAIL AND TOTAL HOLDING PARCEL OHA0014

SEE SHEET 16 FOR DETAIL AND TOTAL HOLDING PARCEL OHA0015

SEE SHEET 17 FOR DETAIL AND TOTAL HOLDING PARCEL OHA0016

SEE SHEET 18 FOR DETAIL AND TOTAL HOLDING PARCEL OHA0017

SEE SHEET 19 FOR DETAIL AND TOTAL HOLDING PARCEL OHA0018

SEE SHEET 20 FOR DETAIL AND TOTAL HOLDING PARCEL OHA0019

SEE SHEET 21 FOR DETAIL AND TOTAL HOLDING PARCEL OHA0020

SEE SHEET 22 FOR DETAIL AND TOTAL HOLDING PARCEL OHA0021

SEE SHEET 23 FOR DETAIL AND TOTAL HOLDING PARCEL OHA0022

SEE SHEET 24 FOR DETAIL AND TOTAL HOLDING PARCEL OHA0023

SEE SHEET 25 FOR DETAIL AND TOTAL HOLDING PARCEL OHA0024

SEE SHEET 26 FOR DETAIL AND TOTAL HOLDING PARCEL OHA0025

SEE SHEET 27 FOR DETAIL AND TOTAL HOLDING PARCEL OHA0026

SEE SHEET 28 FOR DETAIL AND TOTAL HOLDING PARCEL OHA0027

SEE SHEET 29 FOR DETAIL AND TOTAL HOLDING PARCEL OHA0028

SEE SHEET 30 FOR DETAIL AND TOTAL HOLDING PARCEL OHA0029

SEE SHEET 31 FOR DETAIL AND TOTAL HOLDING PARCEL OHA0030

SEE SHEET 32 FOR DETAIL AND TOTAL HOLDING PARCEL OHA0031

SEE SHEET 33 FOR DETAIL AND TOTAL HOLDING PARCEL OHA0032

SEE SHEET 34 FOR DETAIL AND TOTAL HOLDING PARCEL OHA0033

SEE SHEET 35 FOR DETAIL AND TOTAL HOLDING PARCEL OHA0034

SEE SHEET 36 FOR DETAIL AND TOTAL HOLDING PARCEL OHA0035

SEE SHEET 37 FOR DETAIL AND TOTAL HOLDING PARCEL OHA0036

SEE SHEET 38 FOR DETAIL AND TOTAL HOLDING PARCEL OHA0037

SEE SHEET 39 FOR DETAIL AND TOTAL HOLDING PARCEL OHA0038

SEE SHEET 40 FOR DETAIL AND TOTAL HOLDING PARCEL OHA0039

SEE SHEET 41 FOR DETAIL AND TOTAL HOLDING PARCEL OHA0040

SEE SHEET 42 FOR DETAIL AND TOTAL HOLDING PARCEL OHA0041

SEE SHEET 43 FOR DETAIL AND TOTAL HOLDING PARCEL OHA0042

SEE SHEET 44 FOR DETAIL AND TOTAL HOLDING PARCEL OHA0043

SEE SHEET 45 FOR DETAIL AND TOTAL HOLDING PARCEL OHA0044

SEE SHEET 46 FOR DETAIL AND TOTAL HOLDING PARCEL OHA0045

SEE SHEET 47 FOR DETAIL AND TOTAL HOLDING PARCEL OHA0046

SEE SHEET 48 FOR DETAIL AND TOTAL HOLDING PARCEL OHA0047

SEE SHEET 49 FOR DETAIL AND TOTAL HOLDING PARCEL OHA0048

SEE SHEET 50 FOR DETAIL AND TOTAL HOLDING PARCEL OHA0049

SEE SHEET 51 FOR DETAIL AND TOTAL HOLDING PARCEL OHA0050

SEE SHEET 52 FOR DETAIL AND TOTAL HOLDING PARCEL OHA0051

SEE SHEET 53 FOR DETAIL AND TOTAL HOLDING PARCEL OHA0052

SEE SHEET 54 FOR DETAIL AND TOTAL HOLDING PARCEL OHA0053

SEE SHEET 55 FOR DETAIL AND TOTAL HOLDING PARCEL OHA0054

SEE SHEET 56 FOR DETAIL AND TOTAL HOLDING PARCEL OHA0055

SEE SHEET 57 FOR DETAIL AND TOTAL HOLDING PARCEL OHA0056

SEE SHEET 58 FOR DETAIL AND TOTAL HOLDING PARCEL OHA0057

SEE SHEET 59 FOR DETAIL AND TOTAL HOLDING PARCEL OHA0058

SEE SHEET 60 FOR DETAIL AND TOTAL HOLDING PARCEL OHA0059

SEE SHEET 61 FOR DETAIL AND TOTAL HOLDING PARCEL OHA0060

SEE SHEET 62 FOR DETAIL AND TOTAL HOLDING PARCEL OHA0061

SEE SHEET 63 FOR DETAIL AND TOTAL HOLDING PARCEL OHA0062

SEE SHEET 64 FOR DETAIL AND TOTAL HOLDING PARCEL OHA0063

SEE SHEET 65 FOR DETAIL AND TOTAL HOLDING PARCEL OHA0064

SEE SHEET 66 FOR DETAIL AND TOTAL HOLDING PARCEL OHA0065

SEE SHEET 67 FOR DETAIL AND TOTAL HOLDING PARCEL OHA0066

SEE SHEET 68 FOR DETAIL AND TOTAL HOLDING PARCEL OHA0067

SEE SHEET 69 FOR DETAIL AND TOTAL HOLDING PARCEL OHA0068

SEE SHEET 70 FOR DETAIL AND TOTAL HOLDING PARCEL OHA0069

SEE SHEET 71 FOR DETAIL AND TOTAL HOLDING PARCEL OHA0070

SEE SHEET 72 FOR DETAIL AND TOTAL HOLDING PARCEL OHA0071

SEE SHEET 73 FOR DETAIL AND TOTAL HOLDING PARCEL OHA0072

SEE SHEET 74 FOR DETAIL AND TOTAL HOLDING PARCEL OHA0073

SEE SHEET 75 FOR DETAIL AND TOTAL HOLDING PARCEL OHA0074

SEE SHEET 76 FOR DETAIL AND TOTAL HOLDING PARCEL OHA0075

SEE SHEET 77 FOR DETAIL AND TOTAL HOLDING PARCEL OHA0076

SEE SHEET 78 FOR DETAIL AND TOTAL HOLDING PARCEL OHA0077

SEE SHEET 79 FOR DETAIL AND TOTAL HOLDING PARCEL OHA0078

SEE SHEET 80 FOR DETAIL AND TOTAL HOLDING PARCEL OHA0079

SEE SHEET 81 FOR DETAIL AND TOTAL HOLDING PARCEL OHA0080

SEE SHEET 82 FOR DETAIL AND TOTAL HOLDING PARCEL OHA0081

SEE SHEET 83 FOR DETAIL AND TOTAL HOLDING PARCEL OHA0082

SEE SHEET 84 FOR DETAIL AND TOTAL HOLDING PARCEL OHA0083

SEE SHEET 85 FOR DETAIL AND TOTAL HOLDING PARCEL OHA0084

SEE SHEET 86 FOR DETAIL AND TOTAL HOLDING PARCEL OHA0085

SEE SHEET 87 FOR DETAIL AND TOTAL HOLDING PARCEL OHA0086

SEE SHEET 88 FOR DETAIL AND TOTAL HOLDING PARCEL OHA0087

SEE SHEET 89 FOR DETAIL AND TOTAL HOLDING PARCEL OHA0088

SEE SHEET 90 FOR DETAIL AND TOTAL HOLDING PARCEL OHA0089

SEE SHEET 91 FOR DETAIL AND TOTAL HOLDING PARCEL OHA0090

SEE SHEET 92 FOR DETAIL AND TOTAL HOLDING PARCEL OHA0091

SEE SHEET 93 FOR DETAIL AND TOTAL HOLDING PARCEL OHA0092

SEE SHEET 94 FOR DETAIL AND TOTAL HOLDING PARCEL OHA0093

SEE SHEET 95 FOR DETAIL AND TOTAL HOLDING PARCEL OHA0094

SEE SHEET 96 FOR DETAIL AND TOTAL HOLDING PARCEL OHA0095

SEE SHEET 97 FOR DETAIL AND TOTAL HOLDING PARCEL OHA0096

SEE SHEET 98 FOR DETAIL AND TOTAL HOLDING PARCEL OHA0097

SEE SHEET 99 FOR DETAIL AND TOTAL HOLDING PARCEL OHA0098

SEE SHEET 100 FOR DETAIL AND TOTAL HOLDING PARCEL OHA0099

SEE SHEET 101 FOR DETAIL AND TOTAL HOLDING PARCEL OHA0100

STATE OF ILLINOIS }
 COUNTY OF COOK } SS

THIS IS TO CERTIFY THAT I, RANDALL E. GANN, AN ILLINOIS PROFESSIONAL LAND SURVEYOR, HAVE SURVEYED THE PLAT OF HIGHWAYS SHOWN HEREON IN SECTION 31 AND SECTION 32, TOWNSHIP 36 NORTH, RANGE 12 AND SECTION 6 AND SECTION 5, TOWNSHIP 35 NORTH, RANGE 12 EAST OF THE THIRD PRINCIPAL MERIDIAN, COOK/WILL COUNTY, ILLINOIS, THAT THE SURVEY IS TRUE AND COMPLETE AS SHOWN TO THE BEST OF MY KNOWLEDGE AND BELIEF, THAT THE PLAT CORRECTLY REPRESENTS SAID SURVEY, THAT ALL MONUMENTS FOUND AND ESTABLISHED ARE OF PERMANENT QUALITY AND OCCUPY THE POSITIONS SHOWN THEREON AND THAT THE MONUMENTS ARE SUFFICIENT TO ENABLE THE SURVEY TO BE RETRACED. MADE FOR THE DEPARTMENT OF TRANSPORTATION, STATE OF ILLINOIS.

DATED AT SOUTH HOLLAND, ILLINOIS THIS 10TH DAY OF AUGUST, 2010 A.D.

ILLINOIS REGISTERED LAND SURVEYOR NO. 035-003241
 EXPIRATION DATE: NOVEMBER 30, 2010

THIS PROFESSIONAL SERVICE CONFORMS TO THE CURRENT ILLINOIS MINIMUM STANDARDS FOR A BOUNDARY SURVEY.

RECEIVED
 MAR 16 2011
 PLATS & LEGALS

Robinson ENGINEERING
 17000 SOUTH PARK AVENUE
 SOUTH HOLLAND, IL 60473
 (708) 331-6700

PLAT OF HIGHWAYS
 STATE OF ILLINOIS
 DEPARTMENT OF TRANSPORTATION
 WOLF ROAD
 AT 183RD STREET

SECTION PROJECT: COOK/WILL COUNTY JOB NO. R-90-013-10
 SCALE: 1"=50' SHEET 2 OF 5

BUREAU OF LAND ACQUISITION
 201 WEST CENTER COURT
 SCHAMBURG, ILLINOIS 60196

COORDINATE SYSTEM DEFINITION:
 North American Datum of 1983 adjustment of 2007 (N.A.D. '83 (2007))
 Illinois State Plane Eastern Zone estimated GROUND coordinates based upon an average location for the length of the project having the following parameters:
 WGS '84 North Latitude 41°33'26.71397"
 WGS '84 West Longitude 87°53'22.68645"
 WGS '84 Height 630.887 U.S. Feet
 Orthometric Height 739.931 U.S. Feet (estimated utilizing Geoid '03)
 Utilization of these parameters should yield a ground scale factor of 1.0000382521

BEARING REFERENCE DEFINITION:
 North American Datum of 1983 adjustment of 2007 (N.A.D. '83 (2007))
 Illinois State Plane Eastern Zone