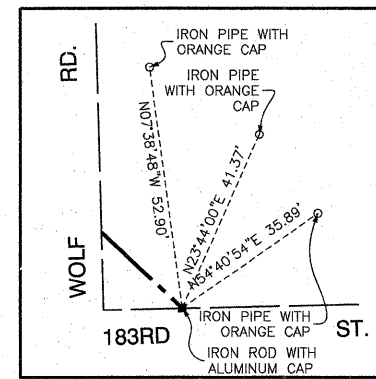
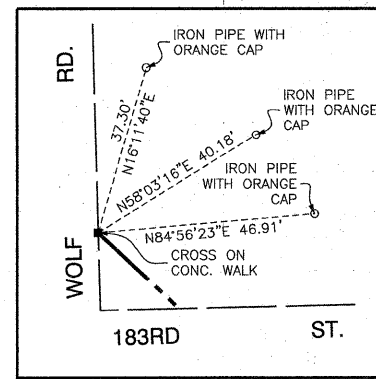
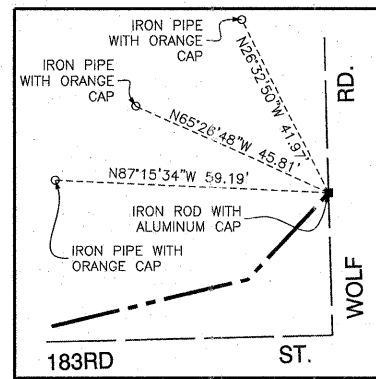
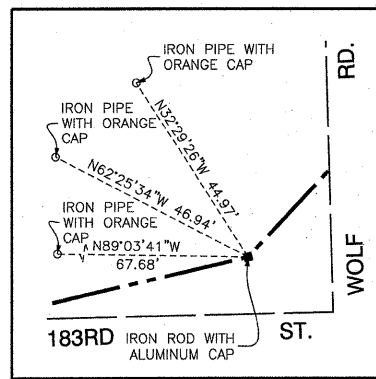
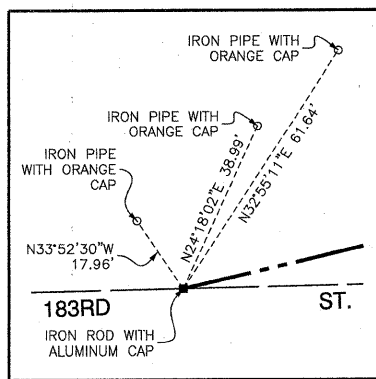
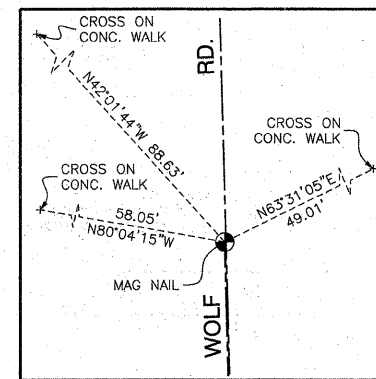
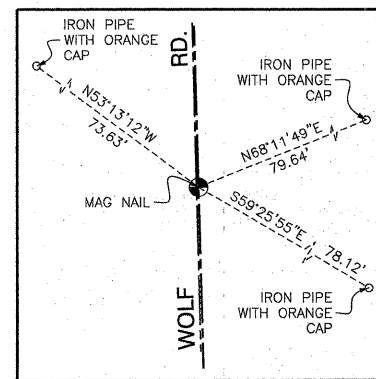
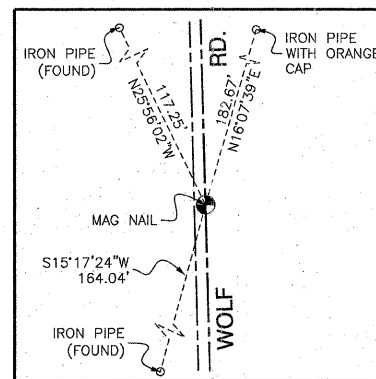
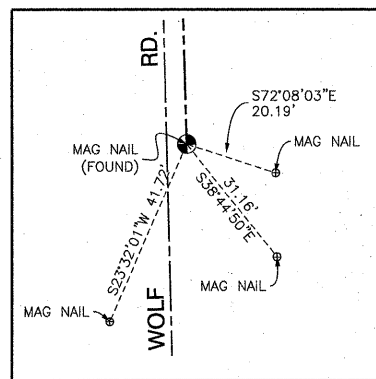
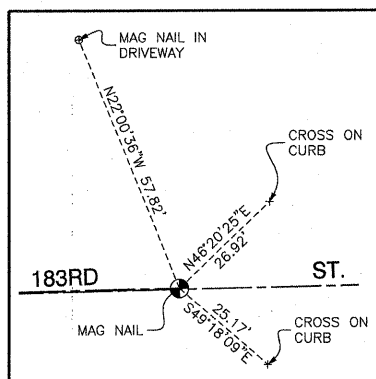
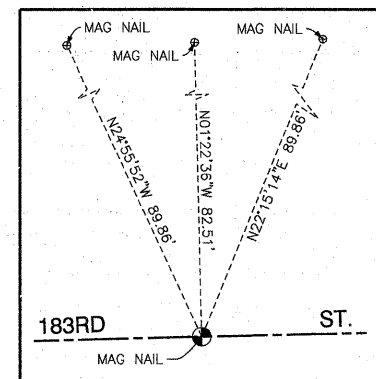
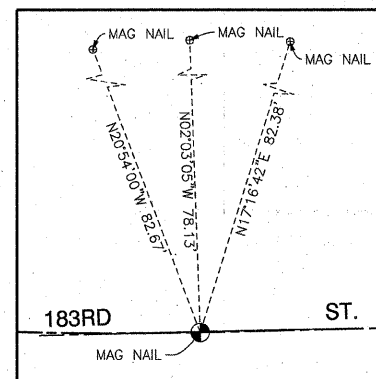
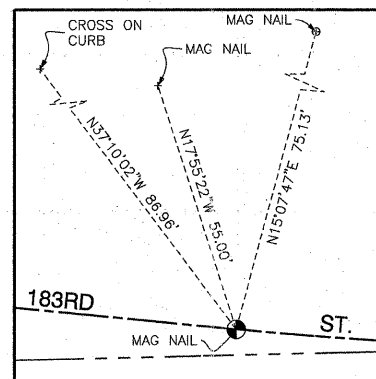
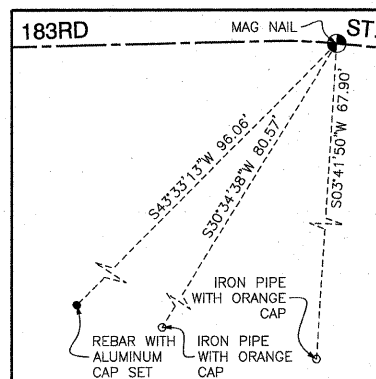
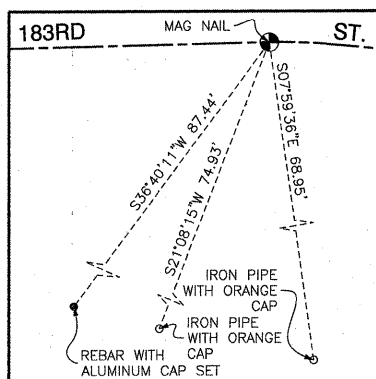
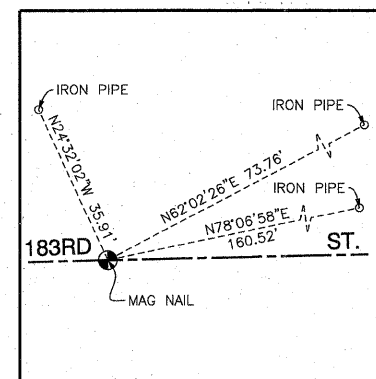
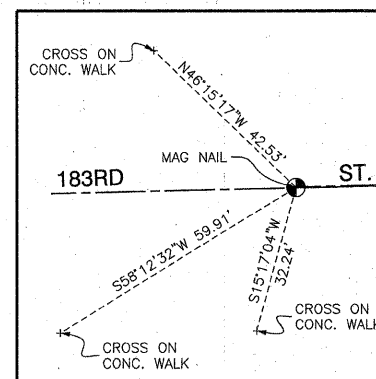
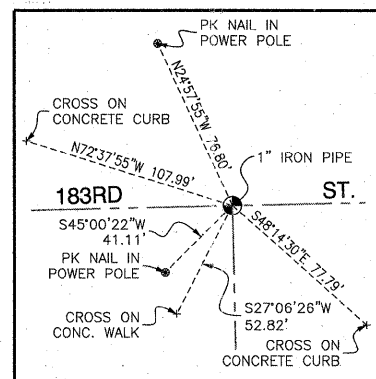
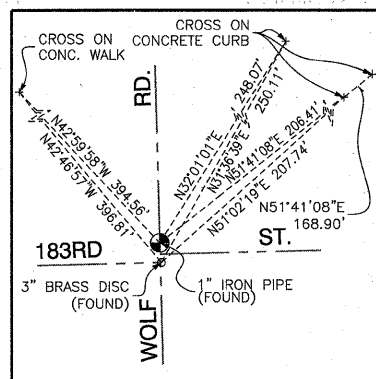
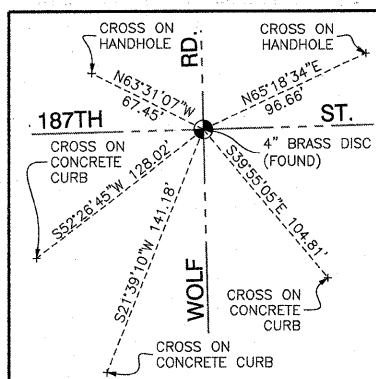
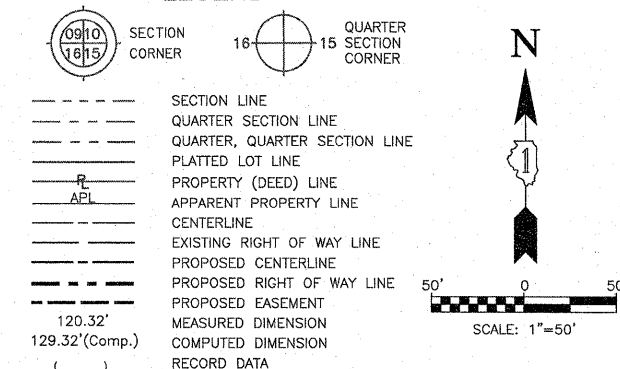


**LEGEND**



DATE	BY	R.O.W. PLAT	NOTEBOOK NO.



STATE OF ILLINOIS }  
COUNTY OF COOK } SS

THIS IS TO CERTIFY THAT I, RANDELL E. GANN, AN ILLINOIS PROFESSIONAL LAND SURVEYOR, HAVE SURVEYED THE PLAT OF HIGHWAYS SHOWN HEREON IN SECTION 31 AND SECTION 32, TOWNSHIP 36 NORTH, RANGE 12 AND SECTION 6 AND SECTION 5, TOWNSHIP 35 NORTH, RANGE 12 EAST OF THE THIRD PRINCIPAL MERIDIAN, COOK/WILL COUNTY, ILLINOIS, THAT THE SURVEY IS TRUE AND COMPLETE AS SHOWN TO THE BEST OF MY KNOWLEDGE AND BELIEF, THAT THE PLAT CORRECTLY REPRESENTS SAID SURVEY, THAT ALL MONUMENTS FOUND AND ESTABLISHED ARE OF PERMANENT QUALITY AND OCCUPY THE POSITIONS SHOWN THEREON AND THAT THE MONUMENTS ARE SUFFICIENT TO ENABLE THE SURVEY TO BE RETRACED. MADE FOR THE DEPARTMENT OF TRANSPORTATION, STATE OF ILLINOIS.

DATED AT SOUTH HOLLAND, ILLINOIS THIS 10TH DAY OF AUGUST, 2010 A.D.

ILLINOIS REGISTERED LAND SURVEYOR NO. 035-003241  
EXPIRATION DATE: NOVEMBER 30, 2010

THIS PROFESSIONAL SERVICE CONFORMS TO THE CURRENT ILLINOIS MINIMUM STANDARDS FOR A BOUNDARY SURVEY.

RECEIVED  
MAR 16 2011  
PLATS & LEGALS

**Robinson ENGINEERING**  
17000 SOUTH PARK AVENUE  
SOUTH HOLLAND, IL 60473  
(708) 331-6700

PLAT OF HIGHWAYS  
STATE OF ILLINOIS  
DEPARTMENT OF TRANSPORTATION  
WOLF ROAD  
AT 183RD STREET

SECTION PROJECT: COOK/WILL COUNTY JOB NO. R-90-013-10  
SCALE: 1"=50' SHEET 4 OF 5

BUREAU OF LAND ACQUISITION  
201 WEST CENTER COURT  
SCHAUMBURG, ILLINOIS 60196