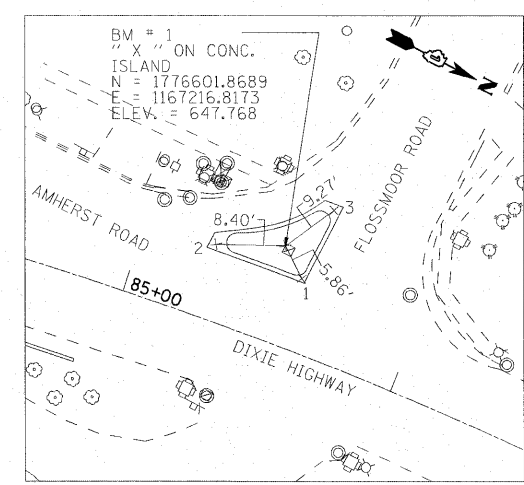
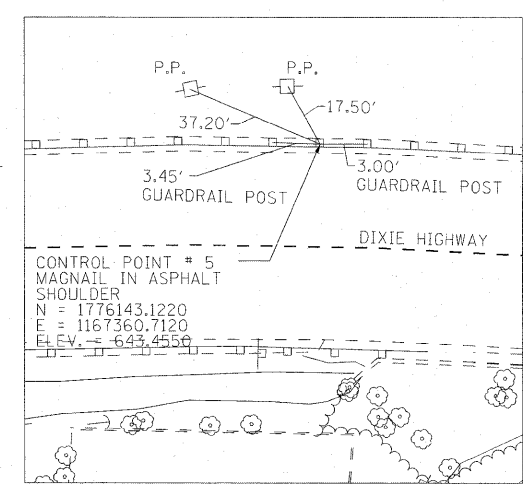


PROP. CURVE C13  
 PI STA. = 83+27.04  
 $\Delta$  = 28° 46' 06" (RT)  
 D = 4° 05' 33"  
 R = 1,400.00'  
 T = 359.05'  
 L = 702.94'  
 E = 45.31'  
 e = 3.29%  
 T.R. = 80.08'  
 S.E. RUN = 206  
 P.C. STA. = 79+67.99  
 P.T. STA. = 86+70.94



- TIES:
1. " X " ON NORTHEAST CORNER OF CONCRETE ISLAND.
  2. " X " ON SOUTHEAST CORNER OF CONCRETE ISLAND.
  3. " X " ON NORTHWEST CORNER OF CONCRETE ISLAND.

**BENCHMARK #1 (BM1)**



- TIES:
1. POWER POLE LOCATED SOUTHWEST OF MAGNAIL.
  2. POWER POLE LOCATED SOUTHWEST OF MAGNAIL.
  3. GUARDRAIL POST NORTH OF MAGNAIL.
  4. GUARDRAIL POST SOUTH OF MAGNAIL.

**CONTROL POINT #5 (CP5)**

COORDINATE DATA:

STA	NORTHING	EASTING	BENCHMARKS
79+67.99	1,776,061.0200	1,167,436.0200	PC CURVE C13
86+70.94	1,776,728.7000	1,167,240.9900	PT CURVE C13

NOTE:

1. THE PROPOSED ALIGNMENT IS THE SAME AS THE EXISTING ALIGNMENT.  
 BENCH MARKS #1  
 ELEVATION = 647.768  
 " X " ON CONCRETE ISLAND AT SOUTHWEST QUADRANT OF  
 DIXIE HIGHWAY AND FLOSSMOOR ROAD.

FILE NAME =	USER NAME = rga11	DESIGNED -	REVISED -	<b>STATE OF ILLINOIS DEPARTMENT OF TRANSPORTATION</b>	<b>ALIGNMENT, TIES, AND BENCHMARKS</b>				F.A.U. RTE.	SECTION	COUNTY	TOTAL SHEETS	SHEET NO.
#FILEL4		DRAWN -	REVISED -		2843	3249-1-2	COOK	25	5				
	PLOT SCALE = 50.0000' / IN.	CHECKED -	REVISED -		SCALE: 1"=50'				SHEET NO. OF SHEETS STA. TO STA.		CONTRACT NO. 60L18		
	PLOT DATE = 4/6/2011	DATE -	REVISED -		ILLINOIS FED. AID PROJECT								