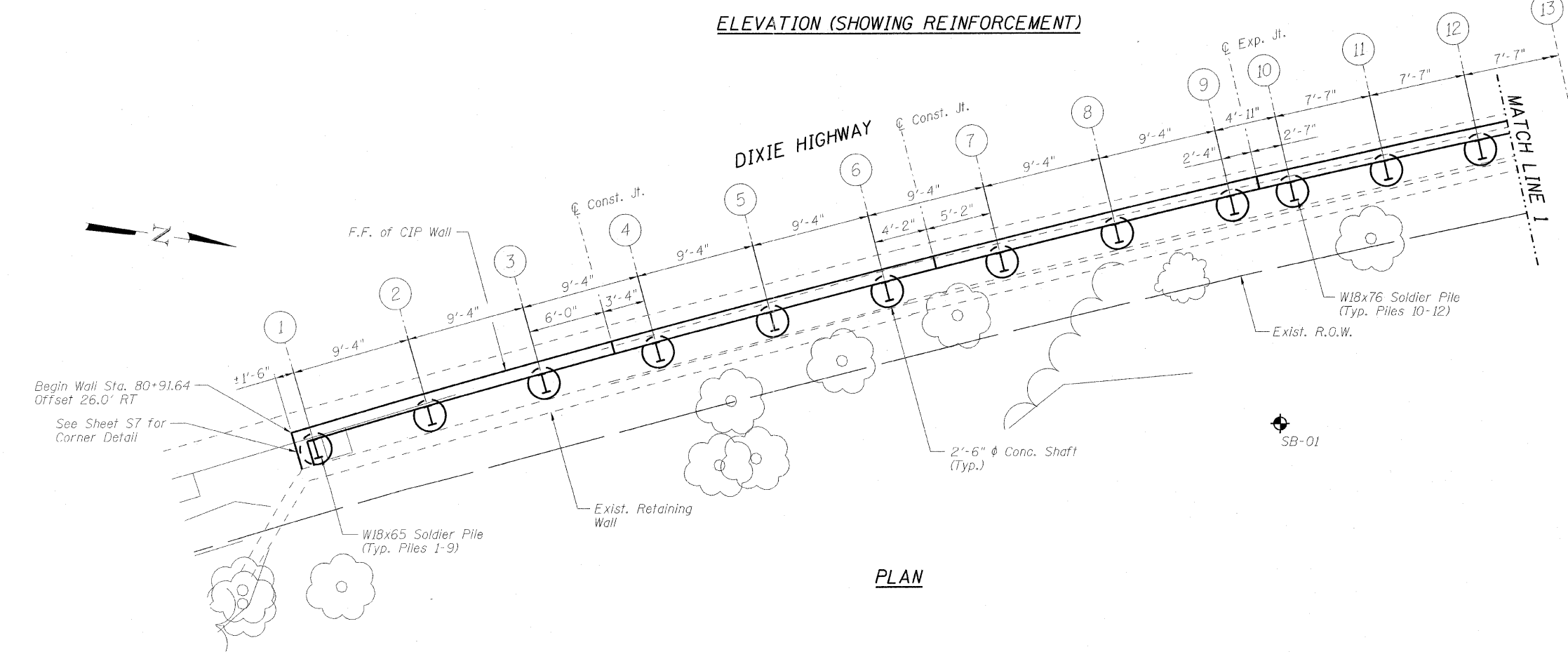


**ELEVATION (SHOWING REINFORCEMENT)**



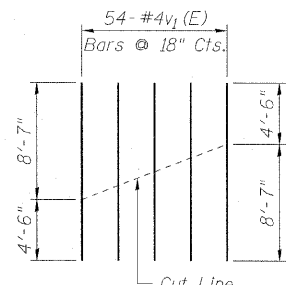
**PLAN**

Minimum Bar Laps:  
No. 4 Bars - 2'-1"  
No. 5 Bars - 2'-7"

Legend:  
F.F. = Front Face  
B.F. = Back Face  
E.F. = Each Face

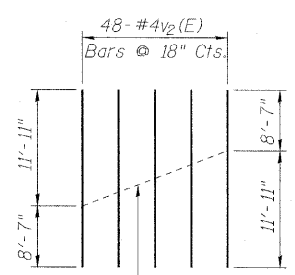
Note:  
See Sheet S8 for remaining  
Pile Tip Elevations.

\*Cut v<sub>1</sub>(E) and v<sub>2</sub>(E) bars and use  
remainder at opposite face.



**v<sub>1</sub>(E) Bars**

(See S6 for v<sub>1</sub>(E) Bar Cuts  
@ North End of Wall)



**v<sub>2</sub>(E) Bars**

FILE NAME =	USER NAME =	DESIGNED - JMS	REVISD -	<b>STATE OF ILLINOIS DEPARTMENT OF TRANSPORTATION</b>	<b>ENLARGED PARTIAL PLAN AND ELEVATION I STRUCTURE NO. 016-W992</b>		F.A.U. RTE. 2843	SECTION 3249-1-2	COUNTY COOK	TOTAL SHEETS 25	SHEET NO. 13		
PLOT SCALE =	DRAWN - DR	CHECKED - JMS	REVISD -				CONTRACT NO. 60L18						
PLOT DATE =	CHECKED - JMH	DRAWN - DR	REVISD -				ILLINOIS FED. AID PROJECT						
							SHEET NO. S3 OF S9 SHEETS						