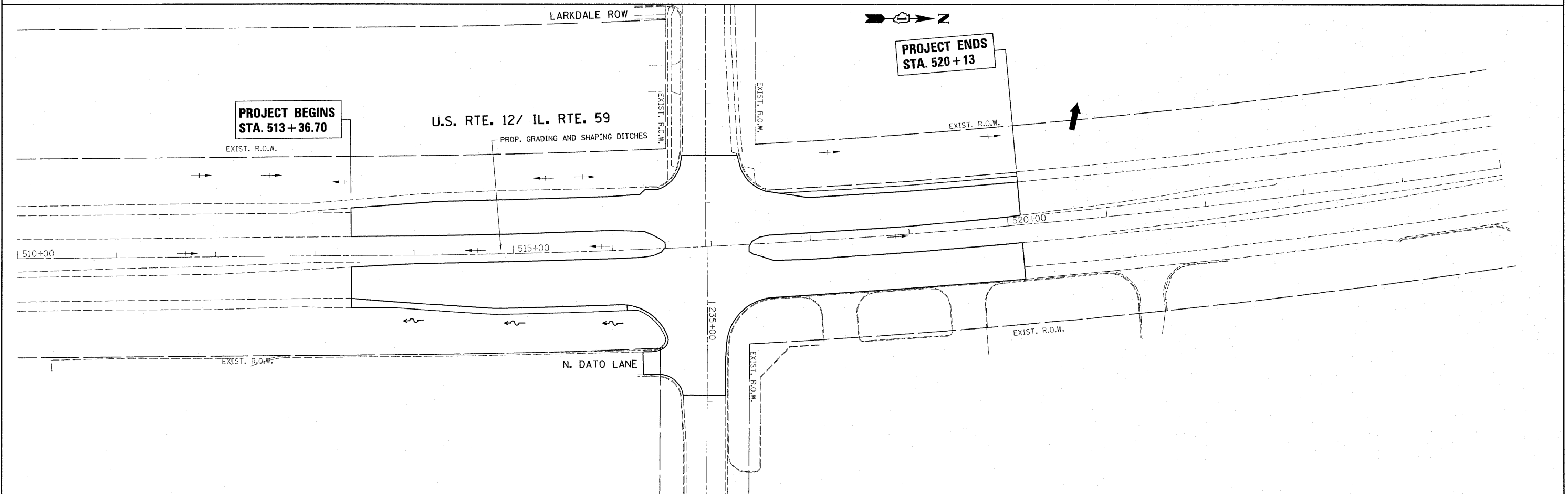


INV=780.699 OPENING OF 5'H X 6'V BOX HAS BEEN PARTIALLY COVERED WITH A METAL PLATE. EXISTING OPENING IS 5'H X 1.5'V
 EXISTING 12" PVC CULVERT (U/S INV 781.0, D/S INV. 780.7, LENGTH = 40')



FILE NAME = P141309-shd-drain.dgn

USER NAME = banksl
 PLOT SCALE = 50.0000' / IN.
 PLOT DATE = 4/4/2011

DESIGNED -
 DRAWN -
 CHECKED -
 DATE -

REVISED -
 REVISED -
 REVISED -
 REVISED -

STATE OF ILLINOIS
 DEPARTMENT OF TRANSPORTATION

U.S. ROUTE 12/IL. ROUTE 59 @ BONNER ROAD
 EXISTING & PROPOSED DRAINAGE AND UTILITY PLAN
 SCALE: 1" = 50' SHEET NO. OF SHEETS STA. 510+00.00 TO STA. 525+00.00

F.A.P. RTE.	SECTION	COUNTY	TOTAL SHEETS	SHEET NO.
334	OR-N	LAKE	14	14
CONTRACT NO. 60L20				
ILLINOIS FED. AID PROJECT				