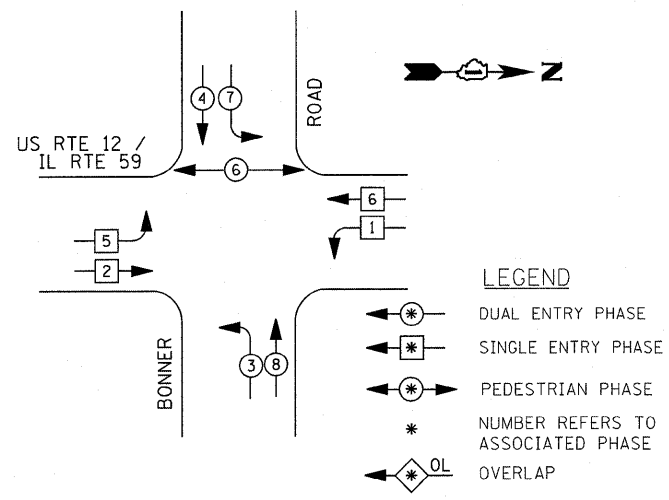


CONTROLLER SEQUENCE

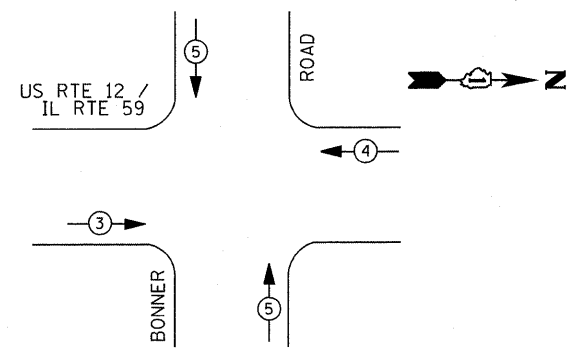


AT LOCATIONS WHERE UPS IS INSTALLED AND EMERGENCY VEHICLE PRIORITY SYSTEM IS IN USE, ANY EXISTING INCANDESCENT CONFIRMATION BEACONS SHALL BE REPLACED WITH LED LAMPS IN ACCORDANCE WITH THE DISTRICT ONE EMERGENCY VEHICLE PRIORITY SYSTEM SPECIFICATION AT NO ADDITIONAL COST TO THE CONTRACT.

RESTORATION OF WORK AREA, RESTORATION OF THE TRAFFIC SIGNAL WORK AREA SHALL BE INCLUDED IN THE RELATED PAY ITEM SUCH AS FOUNDATION, CONDUIT, HANDHOLE, TRENCH AND BACKFILL, ETC., AND NO EXTRA COMPENSATION SHALL BE ALLOWED. ALL ROADWAY SURFACES SUCH AS SHOULDERS, MEDIAN, SIDEWALKS, PAVEMENT ETC. SHALL BE REPLACED IN KIND. ALL DAMAGE TO MOWED LAWNS SHALL BE REPLACED WITH AN APPROVED SOD, AND ALL DAMAGE TO UNMOWED FIELDS SHALL BE SEEDD IN ACCORDANCE WITH STANDARD SPECIFICATIONS 252 AND 250 RESPECTIVELY.

PHASE DESIGNATION DIAGRAM

EMERGENCY VEHICLE PREEMPTION SEQUENCE

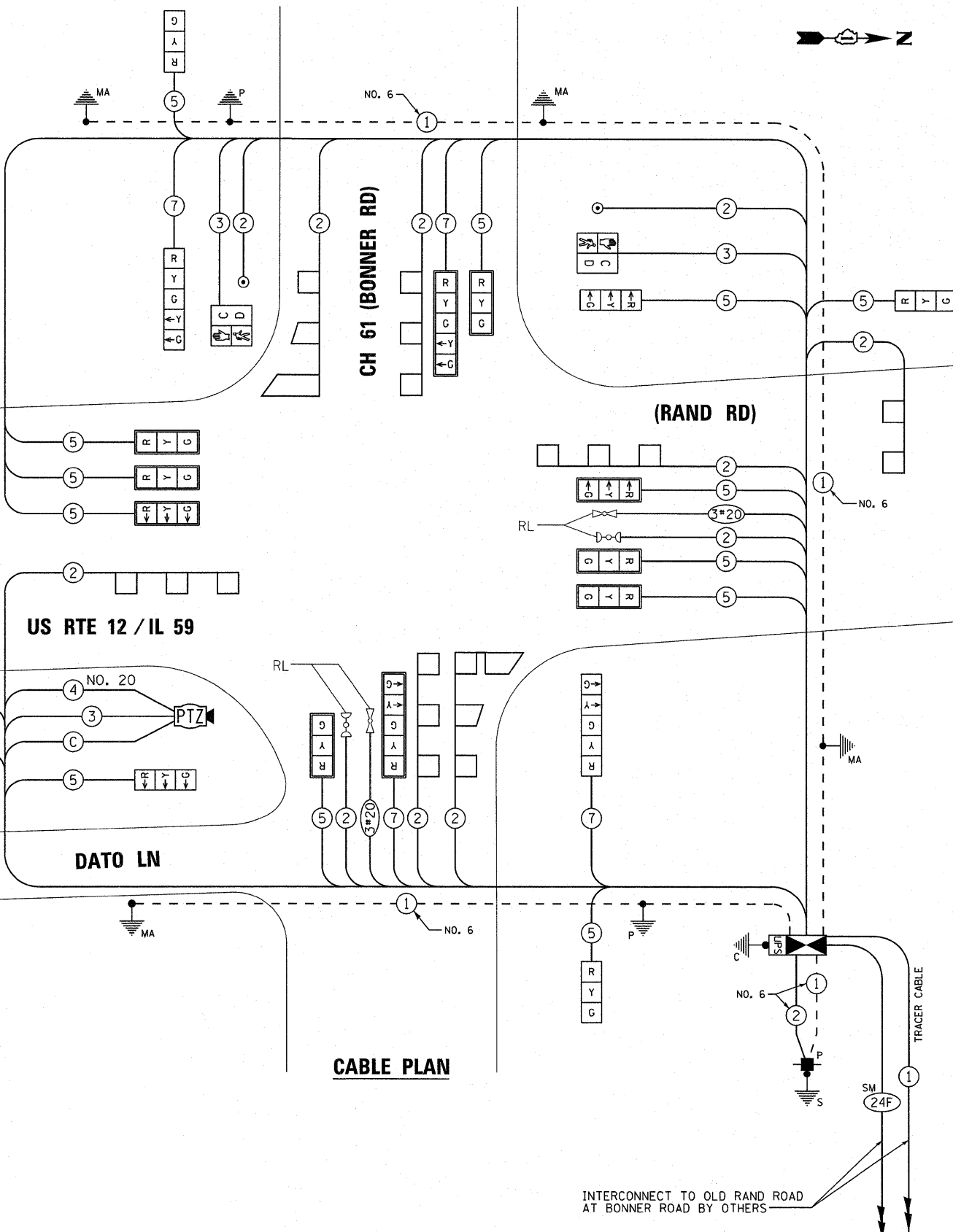


EMERGENCY VEHICLE PREEMPTORS				
EMERGENCY VEHICLE PREEMPTOR	3	4	5	
MOVEMENT	→	←	↕	

SCHEDULE OF QUANTITIES

QUANTITY	UNIT	ITEM
35	SQ FT	SIGN PANEL - TYPE 1
35	SQ FT	SIGN PANEL - TYPE 2
741	FOOT	CONDUIT IN TRENCH, 2" DIA., GALVANIZED STEEL
25	FOOT	CONDUIT IN TRENCH, 2 1/2" DIA., GALVANIZED STEEL
32	FOOT	CONDUIT IN TRENCH, 3" DIA., GALVANIZED STEEL
8	FOOT	CONDUIT IN TRENCH, 3 1/2" DIA., GALVANIZED STEEL
80	FOOT	CONDUIT IN TRENCH, 4" DIA., GALVANIZED STEEL
312	FOOT	CONDUIT PUSHED, 2" DIA., GALVANIZED STEEL
283	FOOT	CONDUIT PUSHED, 4" DIA., GALVANIZED STEEL
3	EACH	HANDHOLE
6	EACH	HEAVY-DUTY HANDHOLE
1	EACH	DOUBLE HANDHOLE
881	FOOT	TRENCH AND BACKFILL FOR ELECTRICAL WORK
1	EACH	FULL-ACTUATED CONTROLLER AND TYPE IV CABINET, SPECIAL UNINTERRUPTIBLE POWER SUPPLY, EXTENDED
1	EACH	UNINTERRUPTIBLE POWER SUPPLY, EXTENDED
799	FOOT	ELECTRIC CABLE IN CONDUIT, SIGNAL, NO. 14 2C
704	FOOT	ELECTRIC CABLE IN CONDUIT, SIGNAL, NO. 14 3C
2858	FOOT	ELECTRIC CABLE IN CONDUIT, SIGNAL, NO. 14 5C
827	FOOT	ELECTRIC CABLE IN CONDUIT, SIGNAL, NO. 14 7C
1770	FOOT	ELECTRIC CABLE IN CONDUIT, LEAD-IN, NO. 14 1 PAIR
333	FOOT	ELECTRIC CABLE IN CONDUIT, SERVICE, NO. 6 2C
2	EACH	TRAFFIC SIGNAL POST, 16 FT.
1	EACH	STEEL MAST ARM ASSEMBLY AND POLE, 46 FT.
2	EACH	STEEL MAST ARM ASSEMBLY AND POLE, 52 FT.
1	EACH	STEEL COMBINATION MAST ARM ASSEMBLY AND POLE 54 FT.
8	FOOT	CONCRETE FOUNDATION, TYPE A
4	FOOT	CONCRETE FOUNDATION, TYPE C
58	FOOT	CONCRETE FOUNDATION, TYPE E 36-INCH DIAMETER
8	EACH	SIGNAL HEAD, LED, 1-FACE, 3-SECTION, MAST-ARM MOUNTED
6	EACH	SIGNAL HEAD, LED, 1-FACE, 3-SECTION, BRACKET MOUNTED
2	EACH	SIGNAL HEAD, LED, 1-FACE, 5-SECTION, BRACKET MOUNTED
2	EACH	SIGNAL HEAD, LED, 1-FACE, 5-SECTION, MAST-ARM MOUNTED
2	EACH	PEDESTRIAN SIGNAL HEAD, LED, 1-FACE, BRACKET MOUNTED WITH COUNTDOWN TIMER
10	EACH	TRAFFIC SIGNAL BACKPLATE, LOUVERED
8	EACH	INDUCTIVE LOOP DETECTOR
813	FOOT	DETECTOR LOOP, TYPE I
2	EACH	PEDESTRIAN PUSH-BUTTON
1	EACH	TEMPORARY TRAFFIC SIGNAL INSTALLATION
2	EACH	RELOCATE EXISTING EMERGENCY VEHICLE PRIORITY SYSTEM, DETECTOR UNIT
1	EACH	RELOCATE EXISTING EMERGENCY VEHICLE PRIORITY SYSTEM, PHASING UNIT
1	EACH	REMOVE EXISTING TRAFFIC SIGNAL EQUIPMENT
11	EACH	REMOVE EXISTING HANDHOLE
7	EACH	REMOVE EXISTING CONCRETE FOUNDATION
4	SO YD	PAVEMENT REPLACEMENT, BITUMINOUS
1	EACH	SERVICE INSTALLATION - POLE MOUNTED
829	FOOT	ELECTRIC CABLE IN CONDUIT, EQUIPMENT GROUNDING CONDUCTOR, NO. 6 1C
326	FOOT	ELECTRIC CABLE IN CONDUIT NO. 20 3/C, TWISTED, SHIELDED
217	FOOT	ELECTRIC CABLE IN CONDUIT, COAXIAL
1	EACH	REMOTE-CONTROLLED VIDEO SYSTEM
1	EACH	LAYER II (DATA LINK) SWITCH
1	EACH	VIDEO ENCODER
217	FOOT	VIDEO CABLE IN CONDUIT, NO. 20 4C FOR VIDEO

* - 100% COST TO THE WAUCONDA FIRE PROTECTION DISTRICT



CABLE PLAN

I.D.O.T. TRAFFIC SIGNAL INSTALLATION ELECTRICAL SERVICE REQUIREMENTS					TOTAL WATTAGE
TYPE	NO. OF LAMPS	WATTAGE INCAND.	LED	% OPERATION	
SIGNAL (RED)	14	17	0.50		119.00
(YELLOW)	14	25	0.25		87.50
(GREEN)	14	15	0.25		52.50
ARROW	20	12	0.10		24.00
PED. SIGNAL	2	25	1.00		50.00
CONTROLLER	1	100	1.00		100.00
ILLUM. SIGN	-	25	0.05		
VIDEO SYSTEM	-	150	1.00		150.00
FLASHER			0.50		
ENERGY COSTS TO:			TOTAL =		583.00

ILLINOIS DEPARTMENT OF TRANSPORTATION
 DIVISION OF HIGHWAY/DISTRICT 1
 201 WEST CENTER COURT/SCHAUMBURG, ILLINOIS 60196-1096
 ENERGY SUPPLY: CONTACT: MARTY RUBIN
 PHONE: (847) 608-2400
 COMPANY: COMED