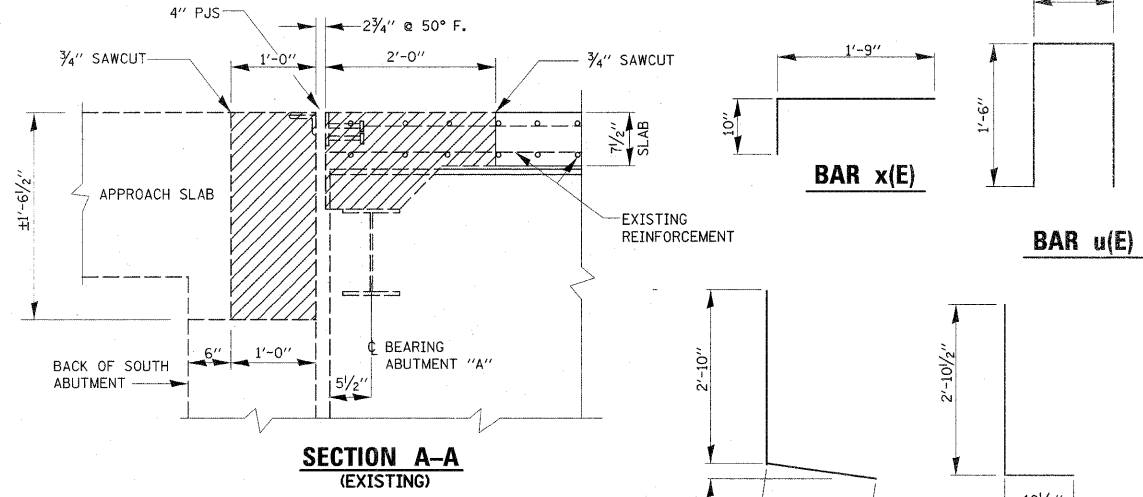
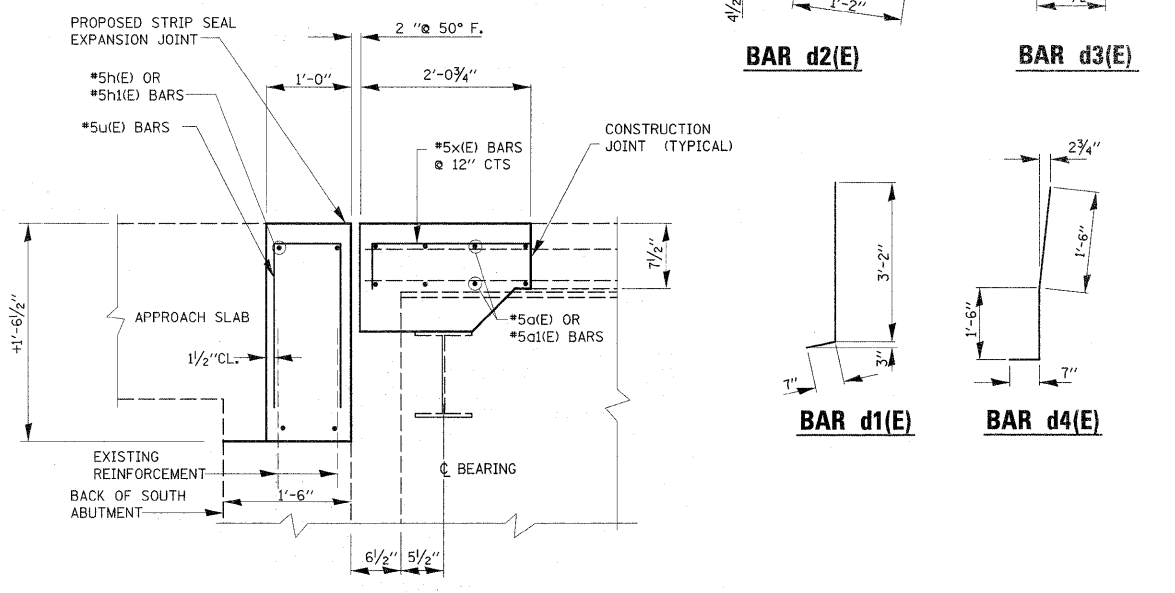


**TRANSVERSE EXPANSION JOINT  
(SOUTH ABUTMENT "A")**



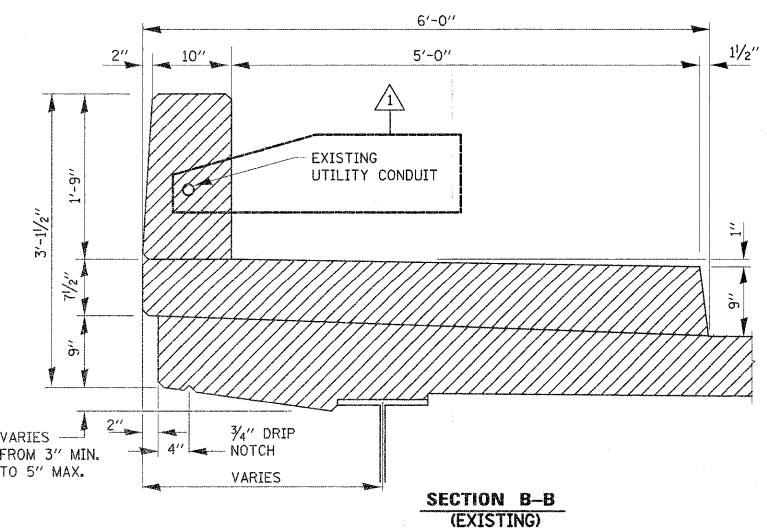
**SECTION A-A  
(EXISTING)**



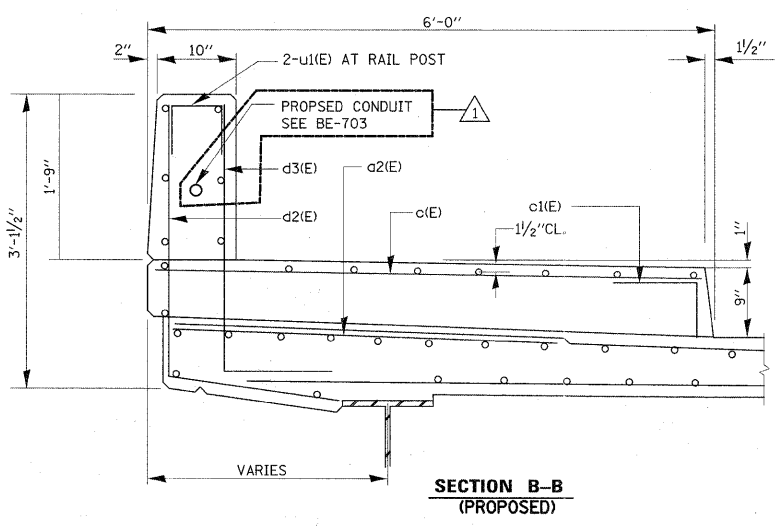
**SECTION A-A  
(PROPOSED)**

BILL OF MATERIALS				
BAR	NO.	SIZE	LENGTH	SHARE
a1(E)	8	#5	26'-9"	
a1(E)	8	#5	23'-0"	
a2(E)	6	#6	4'-0"	
c1(E)	3	#5	5'-9"	
c1(E)	3	#5	2'-1"	
d1(E)	4	#4	3'-9"	
d2(E)	4	#4	4'-0"	
d3(E)	4	#6	3'-9"	
d4(E)	4	#6	3'-7"	
h1(E)	4	#5	26'-11"	
h1(E)	4	#5	23'-2"	
u1(E)	51	#5	3'-7"	
x1(E)	43	#5	2'-7"	
REINFORCEMENT BARS (EPOXY COATED)			POUND	1056
CONCRETE REMOVAL			CU.YD.	7.3
CONCRETE SUPERSTRUCTURE			CU.YD.	7.3

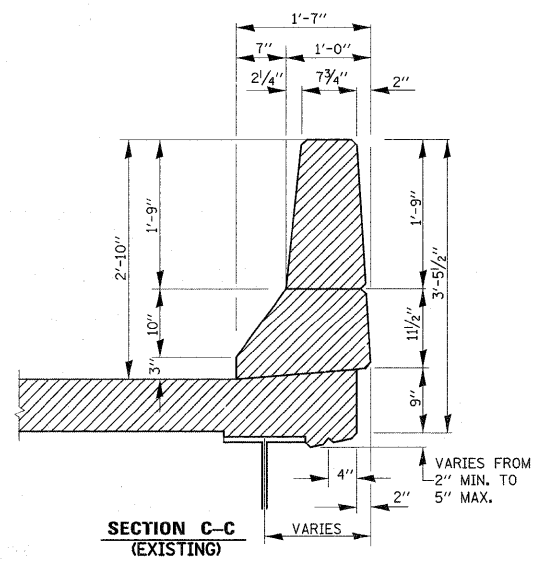
**LEGEND:**  
 HATCHED AREA INDICATES CONCRETE REMOVAL



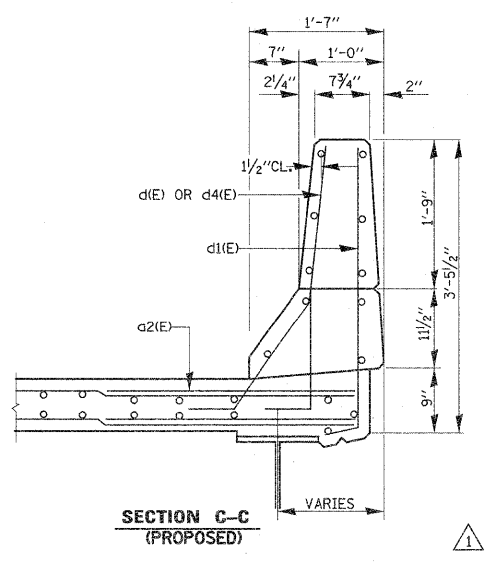
**SECTION B-B  
(EXISTING)**



**SECTION B-B  
(PROPOSED)**



**SECTION C-C  
(EXISTING)**



**SECTION C-C  
(PROPOSED)**

REVISD 5/27/11 MT