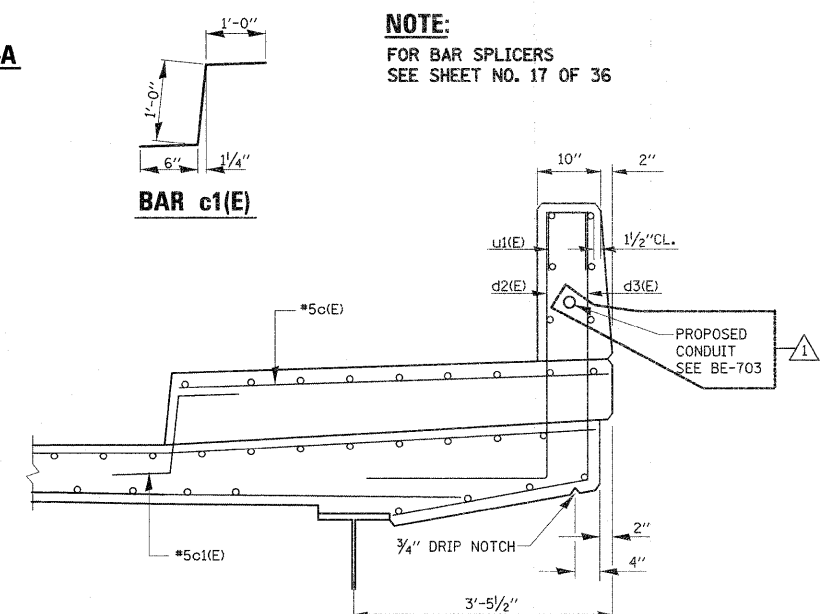
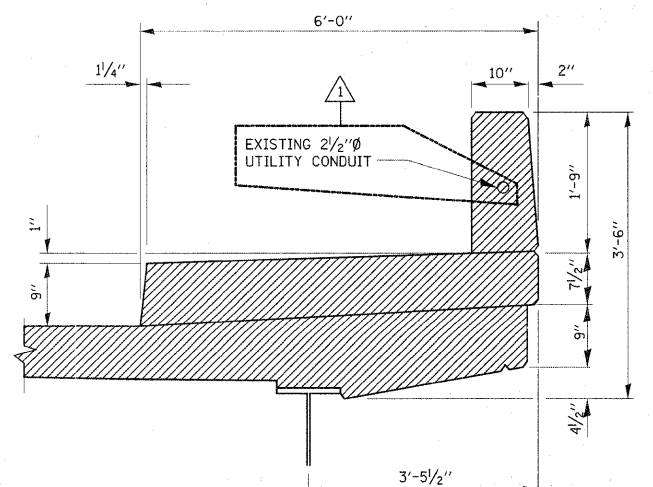
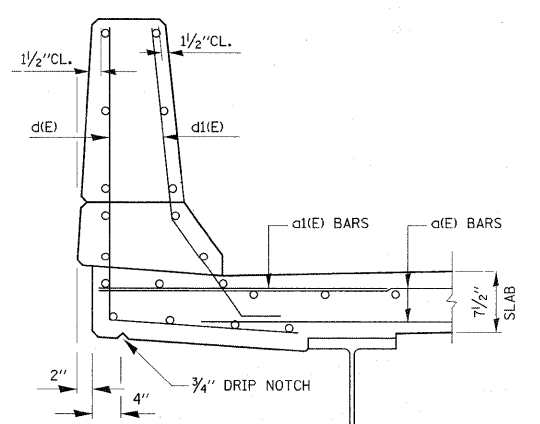
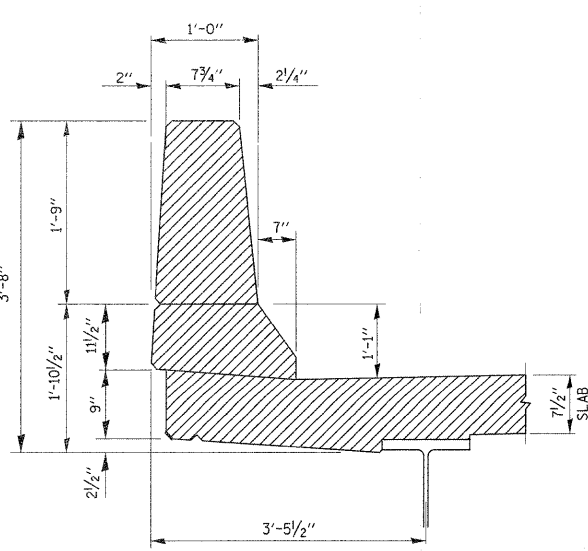
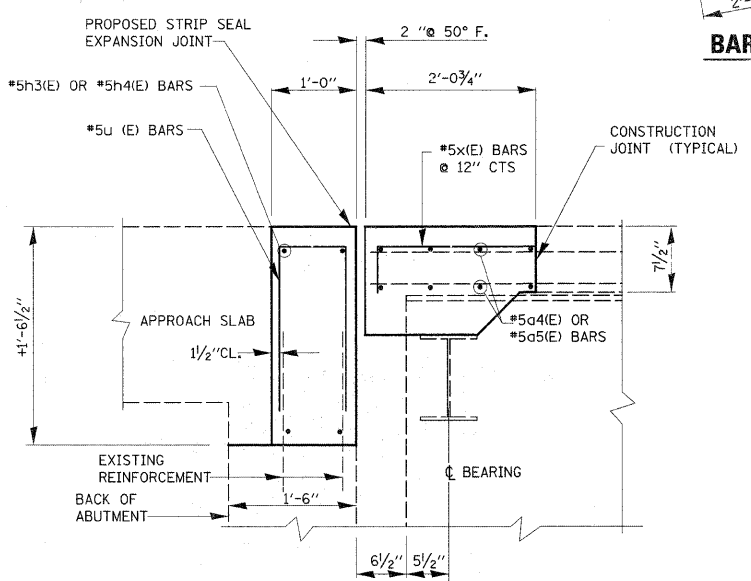
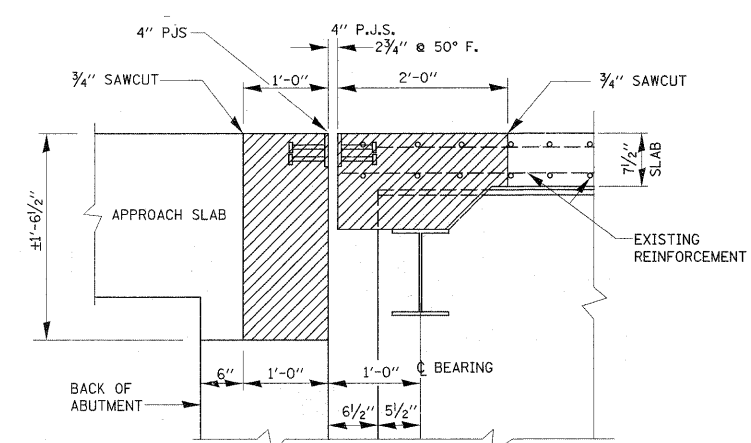
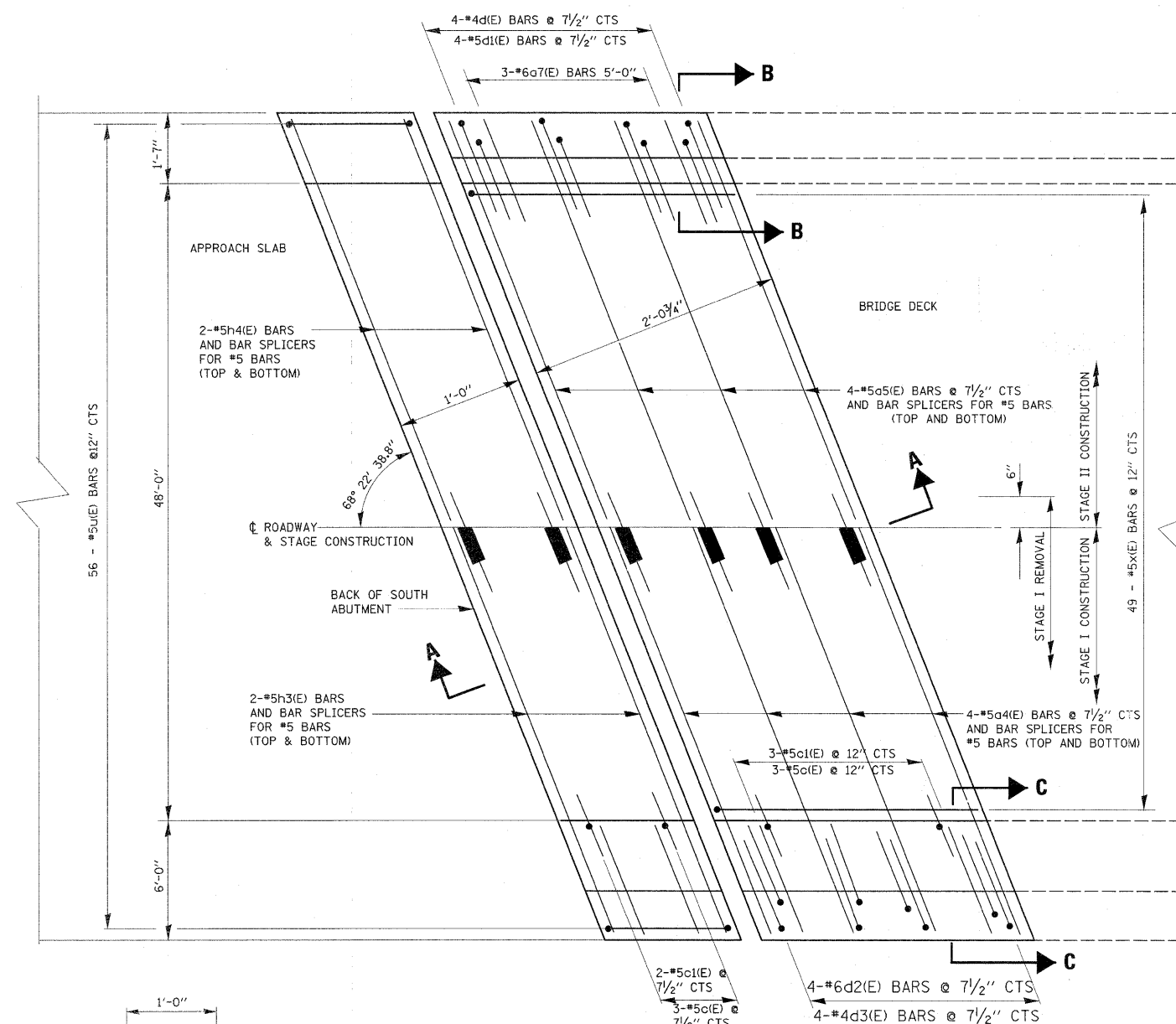


BILL OF MATERIALS

BAR	NO.	SIZE	LENGTH	SHAPE
a4(E)	8	#5	31'-9"	—
a5(E)	8	#5	27'-0"	—
a7(E)	3	#6	5'-0"	—
c(E)	6	#5	5'-9"	—
c1(E)	6	#4	2'-6"	—
d(E)	4	#4	5'-9"	L
d1(E)	4	#5	3'-11"	L
d2(E)	4	#6	3'-9"	J
d3(E)	4	#4	5'-6"	J
h3(E)	4	#5	32'-0"	—
h4(E)	4	#5	27'-3"	—
u(E)	56	#5	3'-7"	□
u1(E)	4	#4	2'-1"	□
x(E)	49	#5	2'-7"	□
REINFORCEMENT BARS (EPOXY COATED)			POUND	1230
CONCRETE REMOVAL			CU.YD.	8.0
CONCRETE SUPERSRUCTURE			CU.YD.	8.0



LEGEND:

HATCHED AREA INDICATES CONCRETE REMOVAL

NOTE:

FOR BAR SPLICERS SEE SHEET NO. 17 OF 36

REVISED 5/27/11 MT

FILE NAME =	USER NAME = tmsakosmv	DESIGNED -	REVISED -
c:\p\work\p\dot\tmsakosmv\d0101671\016-0317-0318.dgn		DRAWN -	REVISED -
PLOT SCALE = 50.0000" / IN.		CHECKED -	REVISED -
PLOT DATE = 6/2/2011		DATE -	REVISED -

**STATE OF ILLINOIS
DEPARTMENT OF TRANSPORTATION**

**IL 43 NB (HARLEM AVENUE) OVER C.N.RR
TRANSVERSE EXPANSION JOINT DETAILS
S.N. 016-0318**

F.A.P. RTE.	SECTION	COUNTY	TOTAL SHEETS	SHEET NO.
848	0708 (.2 & .2A) BR	COOK	36	14
CONTRACT NO. 60L53			ILLINOIS FED. AID PROJECT	

SCALE: SHEET NO. 14 OF 19 SHEETS STA. TO STA.