

STATE OF ILLINOIS  
DEPARTMENT OF TRANSPORTATION  
DIVISION OF HIGHWAYS

**PROPOSED  
HIGHWAY PLANS**

FAP ROUTE 348 : IL 43 (HARLEM AVE.)  
OVER CN RR (SN 016-0317, -0318)  
SECTION: 0708 (.2 & .2A) BR  
**BRIDGE REPAIR, JOINT RECONSTRUCTION & DECK SEALING**  
COOK COUNTY  
C-91-707-10

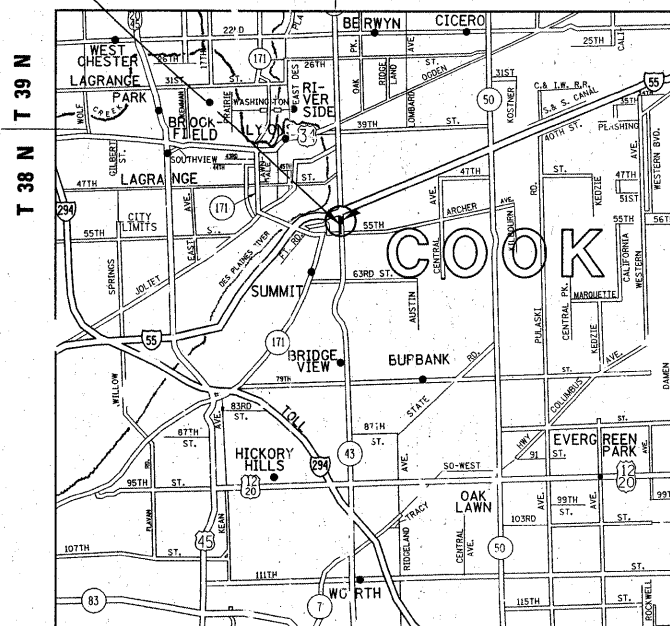
FOR INDEX OF SHEETS, SEE SHEET NO. 2

IMPROVEMENT IS LOCATED IN  
THE CITY OF CHICAGO

LOCATION OF  
IMPROVEMENT:  
SN 016-0317, -0318

LYON TOWNSHIP STICKNEY TOWNSHIP

R 12 E R 13 E

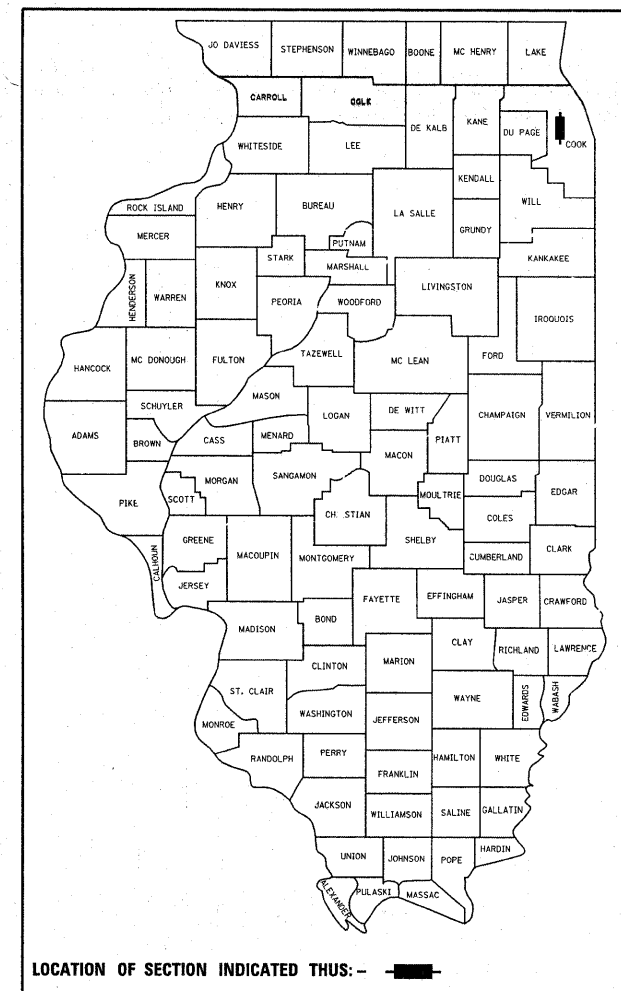


LYON AND STICKNEY TOWNSHIPS

F.A.P. RTE.	SECTION	COUNTY	TOTAL SHEETS	SHEET NO.
348	08708 (.2&.2A) BR	COOK	36	1
		ILLINOIS	CONTRACT NO. 60L53	

D-51-707-10

\* 36 + 5 = 41  
\* 41 + 1 = 42



LOCATION OF SECTION INDICATED THUS: - [black rectangle] -

**TRAFFIC DATA:**

IL 43 (HARLEM AVE)

2109 ADT = 38000

POSTED SPEED LIMIT = 40 MPH

I-55 (STEVENSON EXPY)

2108 ADT = 119000

POSTED SPEED LIMIT = 55 MPH

PROJECT ENGINEER: ROBERT BORO (847) 705-4178  
PROJECT MANAGER: ISSAM RAYYAN (847) 705-4550

CONTRACT NO. 60L53

STATE OF ILLINOIS  
DEPARTMENT OF TRANSPORTATION  
DIVISION OF HIGHWAYS

SUBMITTED APRIL 8, 20 11

Diane M. O'Keefe DEPUTY DIRECTOR OF HIGHWAYS, REGION ENGINEER

May 13 20 11  
Scott E. Stett P.E. ENGINEER OF DESIGN AND ENVIRONMENT

May 13 20 11  
Christine M. Road DIRECTOR OF HIGHWAYS, CHIEF ENGINEER

PRINTED BY THE AUTHORITY  
OF THE STATE OF ILLINOIS

C. U. A. N.  
CHICAGO UTILITY ALERT NETWORK  
1-312-744-7000

INDEX OF SHEETS

STATE STANDARDS

GENERAL NOTES

SHEET NO.	DESCRIPTION	STANDARD NO.	DESCRIPTION
1	TITLE SHEET	701601-07	URBAN LANE CLOSURE, MULTILANE, 1W OR 2W WITH NONTRAVERSABLE MEDIAN
2	INDEX OF SHEETS, STATE STANDARDS, & GENERAL NOTES	701701-07	URBAN LANE CLOSURE, MULTILANE INTERSECTION
3	SUMMARY OF QUANTITIES	701801-04	LANE CLOSURE, MULTILANE 1W OR 2W CROSSWALK OR SIDEWALK CLOSURE
4-12A.	BRIDGE REPAIR DETAILS - SN 016-0317 (IL 43 SB)	701901-01	TRAFFIC CONTROL DEVICES
13-19A.	BRIDGE REPAIR DETAILS - SN 016-0318 (IL 43 NB)	704001-06	TEMPORARY CONCRETE BARRIER
20-23	TRAFFIC CONTROL PLANS (STAGE I & II)		
24-26	TRAFFIC STAGING		
27-28A	DETOUR DURING STAGE I		
29-30	PAVEMENT MARKING PLANS		
31	TRAFFIC SIGNAL INSTALLATION PLAN		
32	TRAFFIC CONTROL AND PROTECTION AT TURN BAYS (TO REMAIN OPEN TO TRAFFIC) (TC-14)		
33	TRAFFIC CONTROL DETAILS FOR FREEWAY SHOULDER CLOSURES AND PARTIAL RAMP CLOSURES (TC-17)		
34	ARTERIAL ROAD INFORMATION SIGN (TC-22)		
35-36	CITY OF CHICAGO TYPICAL PAVEMENT MARKINGS (TC-24)		
36A.	TRAFFIC CONTROL AND PROTECTION (TC-10)		
36B.	PAVEMENT MARKING DETAILS		
36C.	MISC. ELECTRICAL DETAILS		

BEFORE STARTING ANY EXCAVATION, THE CONTRACTOR SHALL CALL "C. U. A. N." (CHICAGO UTILITY ALERT NETWORK) AT (312) 744-7000 FOR FIELD LOCATIONS OF BURIED ELECTRIC, TELEPHONE & GAS UTILITIES. (48 HOUR NOTIFICATION IS REQUIRED).

THE CONTRACTOR SHALL COORDINATE CONSTRUCTION ACTIVITIES WITH UTILITY COMPANIES AND THE CITY OF CHICAGO.

THE CONTRACTOR WILL NOT BE ALLOWED TO SET UP A YARD OR FIELD OFFICE ON STATE PROPERTY WITHOUT WRITTEN PERMISSION FROM THE DEPARTMENT

BEFORE BEGINNING ANY WORK, THE CONTRACTOR SHALL RETAIN AND RECORD FOR FUTURE REFERENCE, ALL EXISTING PAVEMENT MARKING LINES (AND RAISED REFLECTIVE PAVEMENT MARKERS) IN ORDER THAT THESE LOCATIONS CAN BE RE-ESTABLISHED FOR STRIPPING. EXACT LOCATIONS OF ALL PAVEMENT MARKINGS SHALL BE AS DIRECTED BY THE ENGINEER.

IT SHALL BE THE CONTRACTOR'S RESPONSIBILITY TO VERIFY ALL DIMENSIONS AND CONDITIONS EXISTING IN THE FIELD PRIOR TO CONSTRUCTION AND ORDERING OF MATERIALS.

THE CONTRACTOR SHALL CONTACT THE DISTRICT ONE TRAFFIC CONTROL SUPERVISOR AT (847)705-4470 FOR ARTERIALS, AND (847)705-4151 FOR EXPRESSWAYS A MINIMUM OF 72 HOURS IN ADVANCE OF BEGINNING WORK.

THE ENGINEER SHALL CONTACT PATRICE HARRIS AREA TRAFFIC FIELD TECHNICIAN AT (708) 597-9800 A MINIMUM OF TWO(2) WEEKS PRIOR TO THE PLACEMENT OF PERMANENT PAVEMENT MARKINGS.

THE CONTRACTOR SHALL BE RESPONSIBLE FOR THE NOTIFICATION OF ALL EMERGENCY SERVICES, SCHOOL DISTRICTS, I.D.O.T.'S COMMUNICATIONS CENTER, SPRINGFIELD TRUCK PERMIT SECTION AND OTHER AGENCIES AFFECTED BY THE CLOSURE. THE CONTRACTOR SHALL ALSO BE RESPONSIBLE FOR POSTING SIGNS THAT WILL INDICATE THE DATES THE CLOSURE WILL BE IN PLACE.

DO NOT SCALE PLANS FOR CONSTRUCTION DIMENSIONS.

THE "ARTERIAL ROAD INFORMATION SIGN (TC-22)" IS APPLICABLE ONLY TO ARTERIAL ROADS AND SHALL NOT BE APPLIED TO EXPRESSWAYS.

ALL DAMAGE TO EXISTING PAVEMENT MARKINGS OR RAISED REFLECTIVE PAVEMENT MARKERS OUTSIDE THE REMOVAL LINE SHOWN ON THE PLANS SHALL BE REPLACED AT THE CONTRACTOR'S EXPENSE.

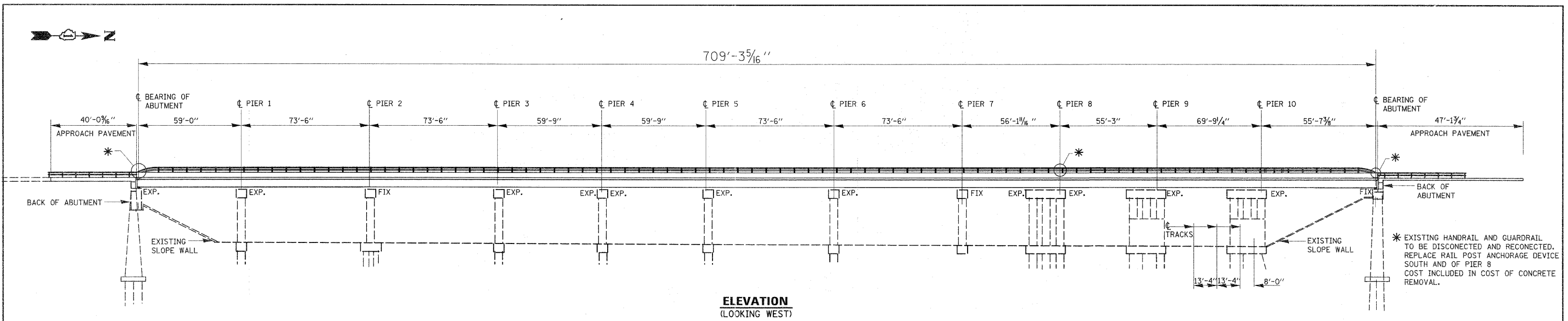
Contractor shall maintain the existing lighting for duration of the contract. Cost included in the maintenance of lighting system.

FILE NAME =	USER NAME = gorengautab	DESIGNED -	REVISED -	<b>STATE OF ILLINOIS DEPARTMENT OF TRANSPORTATION</b>	<b>INDEX OF SHEETS STATE STANDARDS, GENERAL NOTES</b>				Rev. 6-6-11	
c:\pw\work\pvidot\gorengautab\0212247	1170710-sht-plan.dgn	DRAWN -	REVISED -		F.A.P. RTE.	SECTION	COUNTY	TOTAL SHEETS	SHEET NO.	Rev.
	PLOT SCALE = 50.0000' / IN.	CHECKED -	REVISED -		348	0708 (.2 & .2A) BR	COOK	36	2	
	PLOT DATE = 4/19/2011	DATE -	REVISED -		SCALE: NONE		SHEET NO. OF SHEETS STA. TO STA.		CONTRACT NO. 60L53	

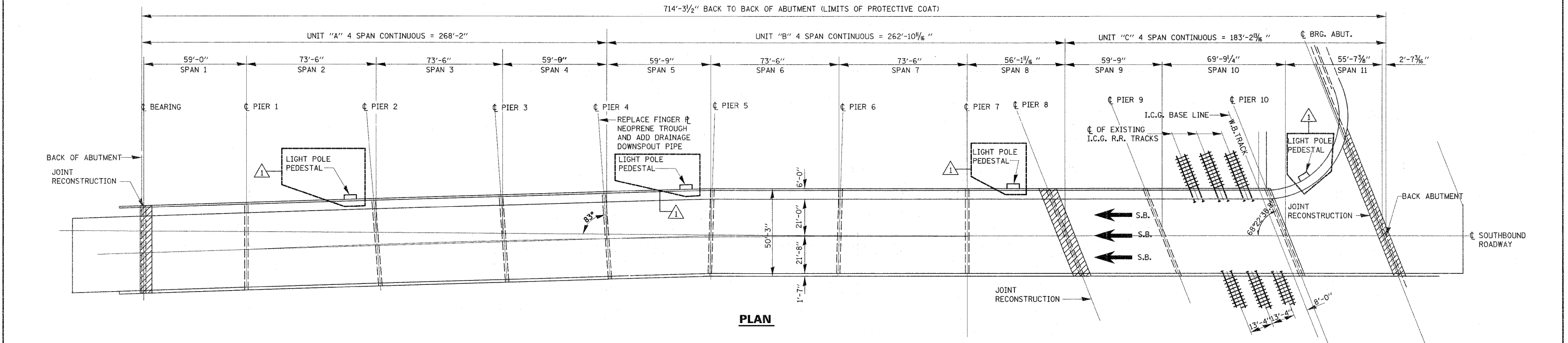
SUMMARY OF QUANTITIES			URBAN 100% STATE			CONSTRUCTION TYPE CODE 0014			SUMMARY OF QUANTITIES			URBAN 100% STATE			CONSTRUCTION TYPE CODE 0014		
CODE NO	ITEM	UNIT	TOTAL QUANTITIES	SN 016-0317	SN 016-0318				CODE NO	ITEM	UNIT	TOTAL QUANTITIES	SN 016-0317	SN 016-0318			
42001300	PROTECTIVE COAT	SQ YD	126	83	43				Z0030275	IMPACT ATTENUATORS, TEMPORARY (SEVERE USE, NARROW), TEST LEVEL 2	EACH	2	1	1			
50102400	CONCRETE REMOVAL	CU YD	42.2	25.9	16.3				Z0030340	IMPACT ATTENUATORS, RELOCATE (NON-REDIRECTIVE), TEST LEVEL 2	EACH	7	4	3			
50300255	CONCRETE SUPERSTRUCTURE	CU YD	42.2	26.3	16.6				Z0030850	TEMPORARY INFORMATION SIGNING	SO FT	51.4	25.7	25.7			
50800205	REINFORCEMENT BARS, EPOXY COATED	POUND	6270	4230	2340				Z0048665	RAILROAD PROTECTIVE LIABILITY INSURANCE	L SUM	1	0.5	0.5			
50800515	BAR SPLICERS	EACH	64	40	24				Z0033028	MAINTENANCE OF LIGHTING SYSTEM	CAL MD	4	2	2			
52000110	PERFORMED JOINT STRIP SEAL	FOOT	330	202	128				X7010210	TRAFFIC CONTROL AND PROTECTION (SPECIAL)	L SUM	1	0.5	0.5			
67000400	ENGINEER'S FIELD OFFICE, TYPE A	CAL MD	4	2	2				85000200	MAINTENANCE OF EXISTING TRAFFIC SIGNAL INSTALLATION	EACH	1		1			
67100100	MOBILIZATION	L SUM	1	0.5	0.5				87801225	ELECTRIC CABLE IN CONDUIT, SIGNAL NO. 14 3C	FOOT	1370		1370			
<del>70102630</del>	<del>TRAFFIC CONTROL AND PROTECTION, STANDARD 701601</del>	<del>L SUM</del>	<del>1</del>	<del>0.5</del>	<del>0.5</del>				89502300	REMOVE ELECTRIC CABLE FROM CONDUIT	FOOT	1280		1280			
<del>70102640</del>	<del>TRAFFIC CONTROL AND PROTECTION, STANDARD 701801</del>	<del>L SUM</del>	<del>1</del>	<del>0.5</del>	<del>0.5</del>				X7011015	TRAFFIC CONTROL AND PROTECTION (EXPRESSWAYS)	L SUM	1		1			
70301000	WORK ZONE PAVEMENT MARKING REMOVAL	SO FT	4450	2950	1500				Z0073510	TEMPORARY TRAFFIC SIGNAL TIMING	EACH	1		1			
70400100	TEMPORARY CONCRETE BARRIER	FOOT	400	250	150												
70400200	RELOCATE TEMPORARY CONCRETE BARRIER	FOOT	400	250	150												
* 78008200	POLYUREA PAVEMENT MARKING TYPE I - LETTERS AND SYMBOLS	SO FT	155		155												
* 78008210	POLYUREA PAVEMENT MARKING TYPE I - LINE 4"	FOOT	570	325	245												
* 78008230	POLYUREA PAVEMENT MARKING TYPE I - LINE 6"	FOOT	975	55	920												
* 78008240	POLYUREA PAVEMENT MARKING TYPE I - LINE 8"	FOOT	520		520												
* 78008250	POLYUREA PAVEMENT MARKING TYPE I - LINE 12"	FOOT	105		105												
78300100	PAVEMENT MARKING REMOVAL	SO FT	1140	140	1000												
X7030025	WET REFLECTIVE TEMPORARY TAPE, TYPE III - LETTERS AND SYMBOLS	SO FT	365		365												
X7030030	WET REFLECTIVE TEMPORARY TAPE TYPE III, 4 INCH	FOOT	8840	6520	2320												
X7030040	WET REFLECTIVE TEMPORARY TAPE TYPE III, 6 INCH	FOOT	2320	1692	628												
XX001782	BRIDGE DRAINAGE SYSTEM REPAIRS	FOOT	90	90													
Z0001905	STRUCTURAL STEEL REPAIR	POUND	730	480	250												
Z0012754	STRUCTURAL REPAIR OF CONCRETE (DEPTH EQUAL TO OR LESS THAN 5 INCHES)	SO FT	24	24													
Z0021914	SILICONE JOINT SEALER, 2.75"	FOOT	12		12												
Z0026346	NIGHTTIME WORK ZONE LIGHTING	L SUM	1	0.5	0.5												
Z0030240	IMPACT ATTENUATORS, TEMPORARY (NON-REDIRECTIVE), TEST LEVEL 2	EACH	5	3	2												
X7030050	WET REFLECTIVE TEMPORARY TAPE TYPE III, 12 INCH	FOOT	35		35												

\*Specialty Items

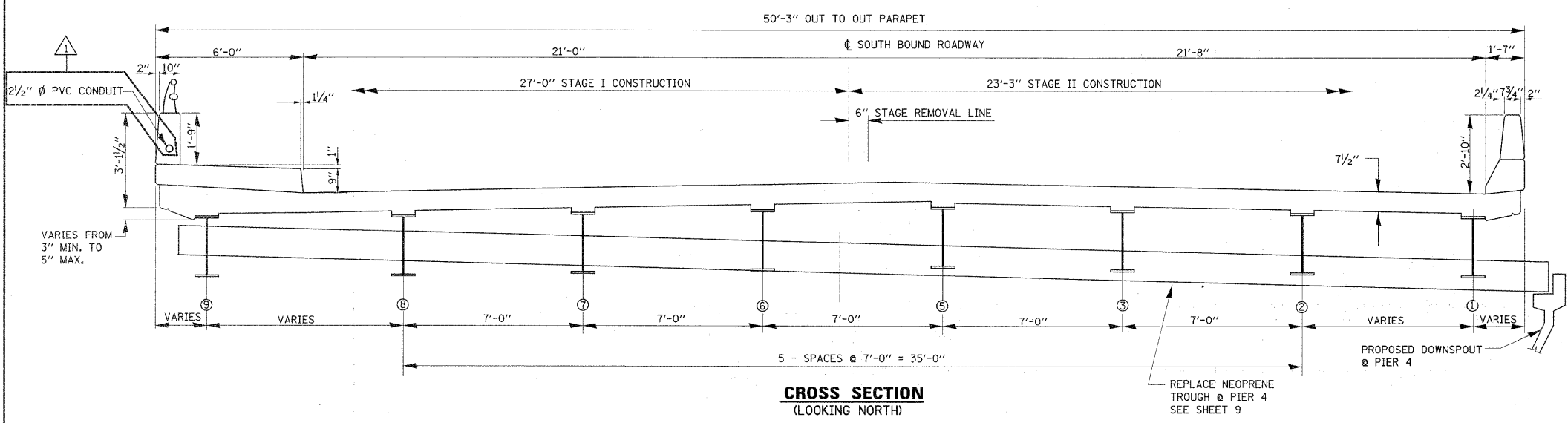
Rev. 6-6-11



**ELEVATION**  
(LOOKING WEST)



**PLAN**



**CROSS SECTION**  
(LOOKING NORTH)

**TOTAL BILL OF MATERIALS SN 016-0317**

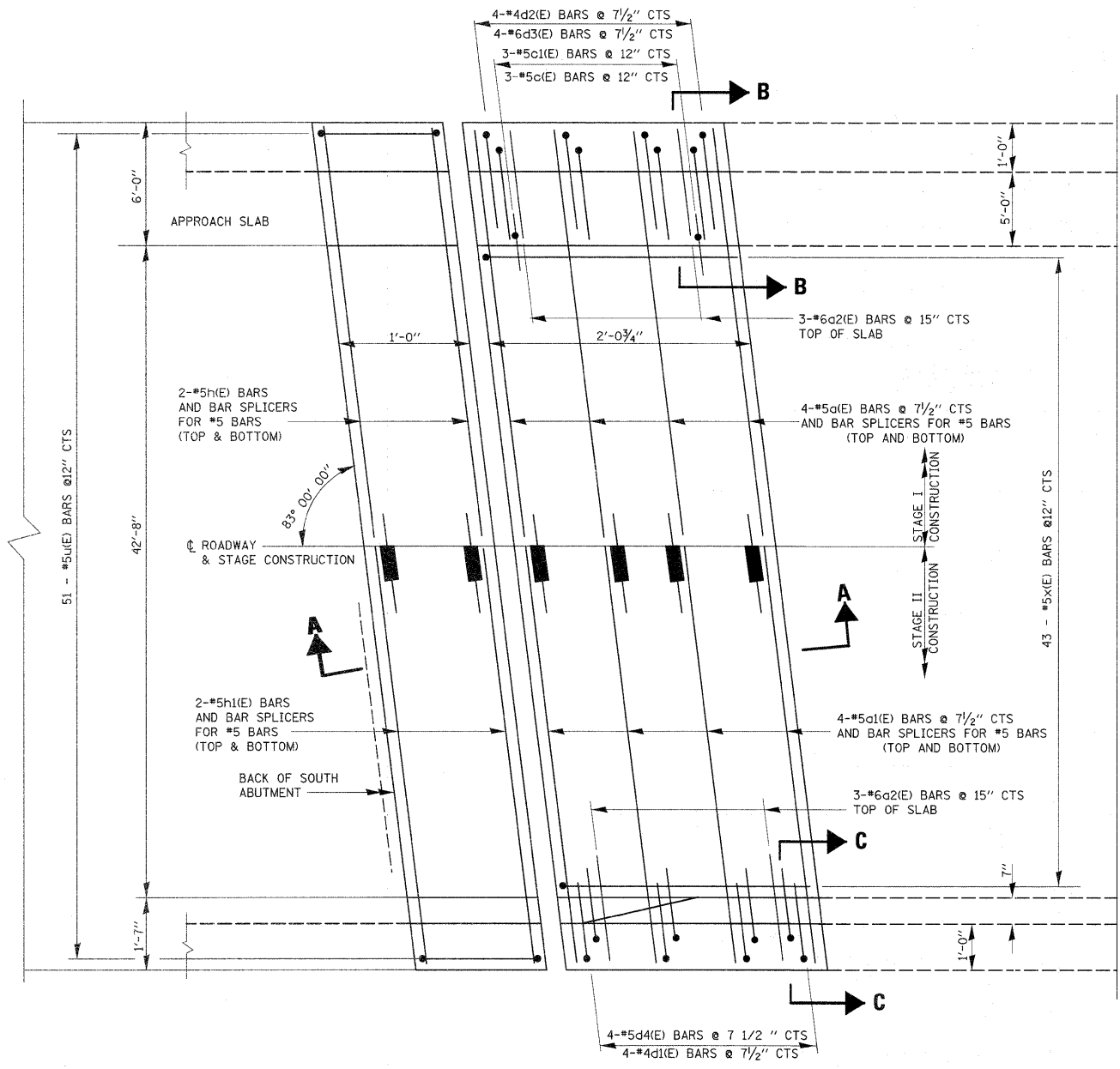
ITEM	UNIT	QUANTITY
REINFORCEMENT BARS (EPOXY COATED)	POUND	4230
CONCRETE REMOVAL	CU. YD.	25.3
CONCRETE SUPERSTRUCTURE	CU. YD.	26.3
PREFORMED JOINT STRIP SEAL	FOOT	202
BRIDGE DRAINAGE SYSTEM REPAIRS	FOOT	90
BAR SPLICERS	EACH	40
STRUCTURAL STEEL REPAIR	POUND	480
PROTECTIVE COAT	SQ. YD.	82
ELASTOMERIC NEOPRENE TROUGH	EACH	1
STRUCTURAL REPAIR OF CONCRETE < 5"	SQ. FT.	24

\*\*

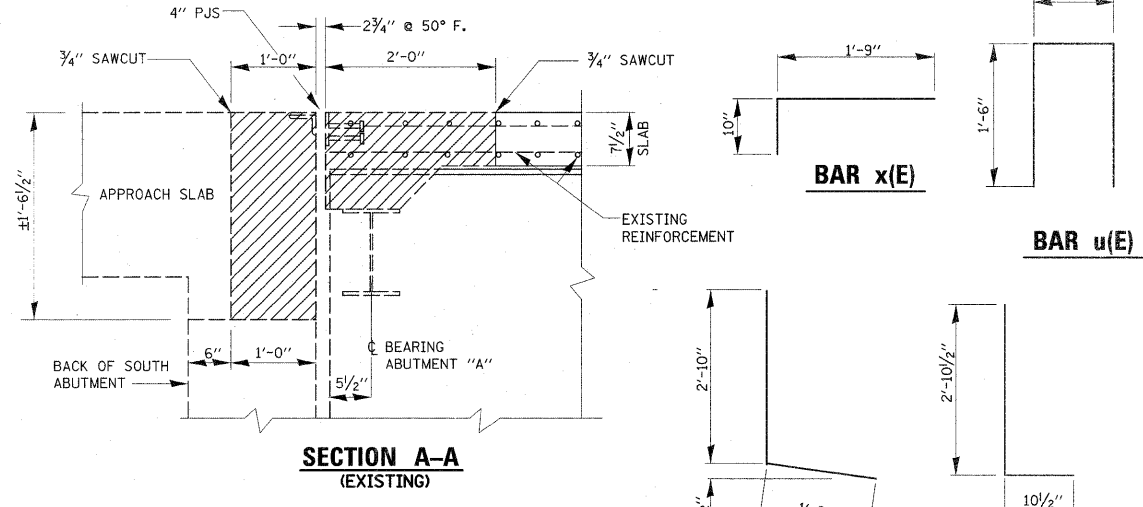
\*\* NEW CONCRETE AREA ONLY

**FOR GENERAL NOTES SEE SHEET 13**

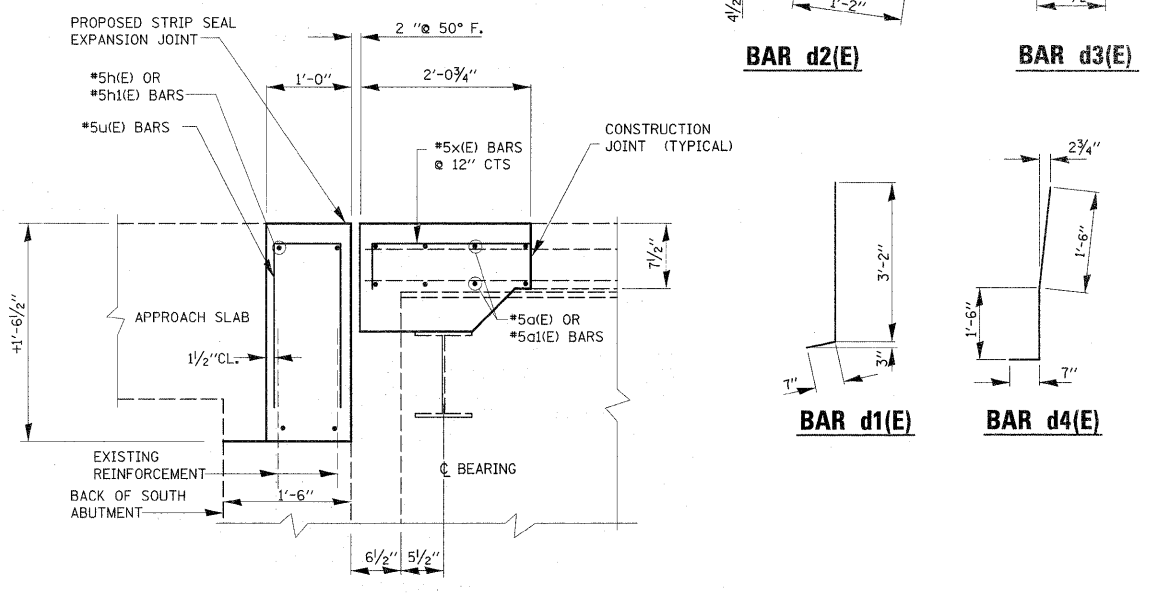
REVISION 5/27/11 MT



**TRANSVERSE EXPANSION JOINT  
(SOUTH ABUTMENT "A")**



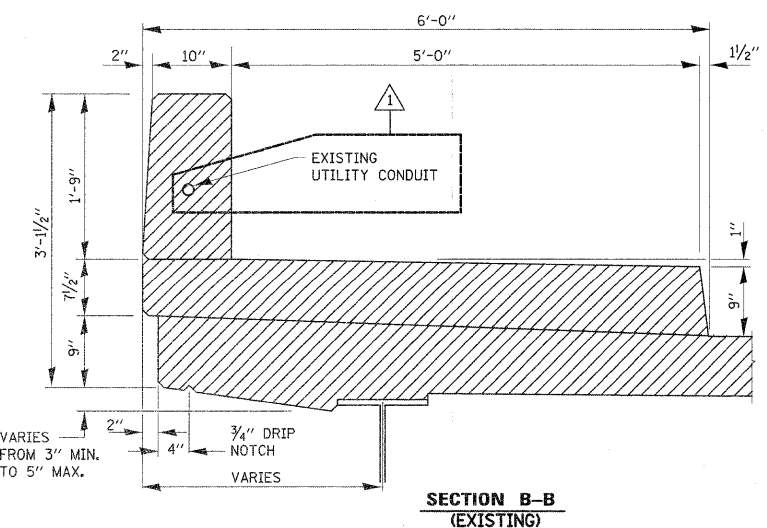
**SECTION A-A  
(EXISTING)**



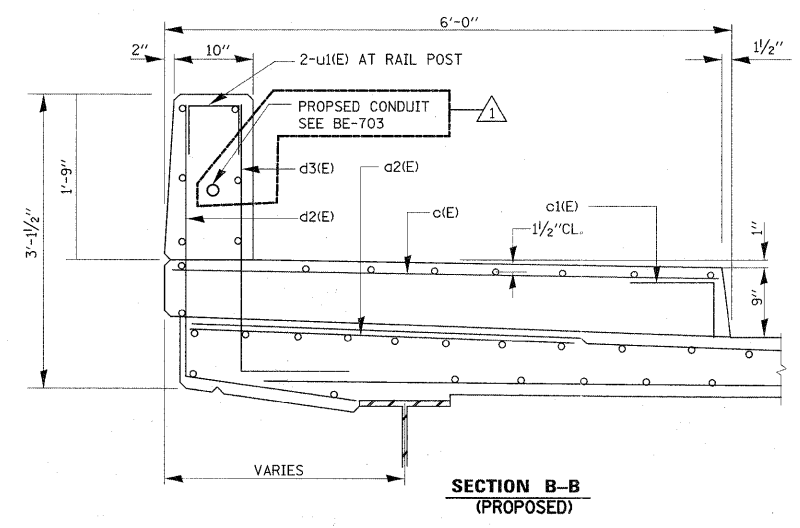
**SECTION A-A  
(PROPOSED)**

BILL OF MATERIALS				
BAR	NO.	SIZE	LENGTH	SHARE
a1(E)	8	#5	26'-9"	
a1(E)	8	#5	23'-0"	
a2(E)	6	#6	4'-0"	
c1(E)	3	#5	5'-9"	
c1(E)	3	#5	2'-1"	
d1(E)	4	#4	3'-9"	
d2(E)	4	#4	4'-0"	
d3(E)	4	#6	3'-9"	
d4(E)	4	#6	3'-7"	
h1(E)	4	#5	26'-11"	
h1(E)	4	#5	23'-2"	
u1(E)	51	#5	3'-7"	
x1(E)	43	#5	2'-7"	
REINFORCEMENT BARS (EPOXY COATED)			POUND	1056
CONCRETE REMOVAL			CU.YD.	7.3
CONCRETE SUPERSTRUCTURE			CU.YD.	7.3

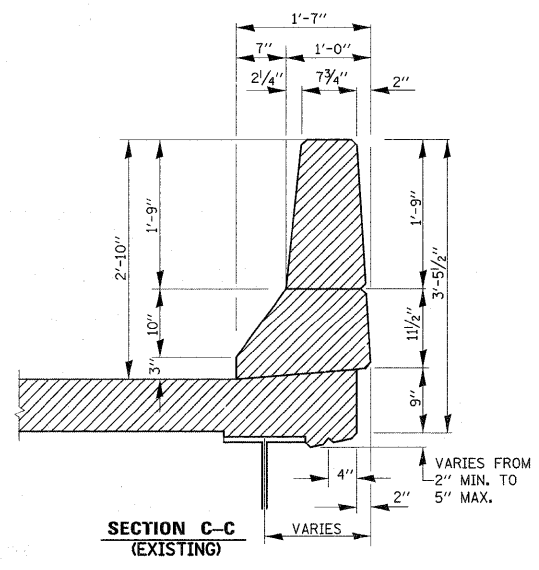
**LEGEND:**  
 HATCHED AREA INDICATES CONCRETE REMOVAL



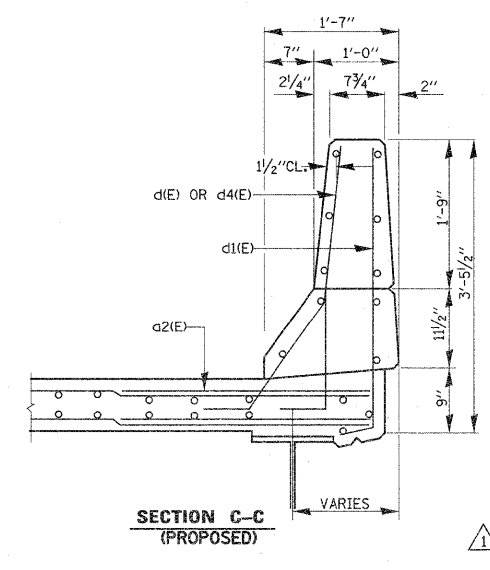
**SECTION B-B  
(EXISTING)**



**SECTION B-B  
(PROPOSED)**

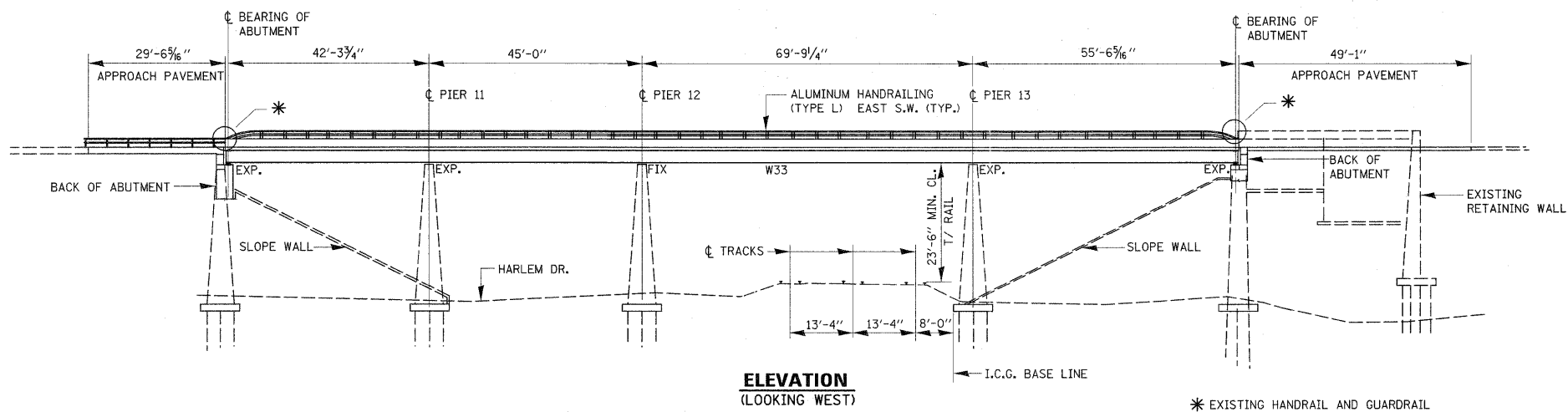


**SECTION C-C  
(EXISTING)**

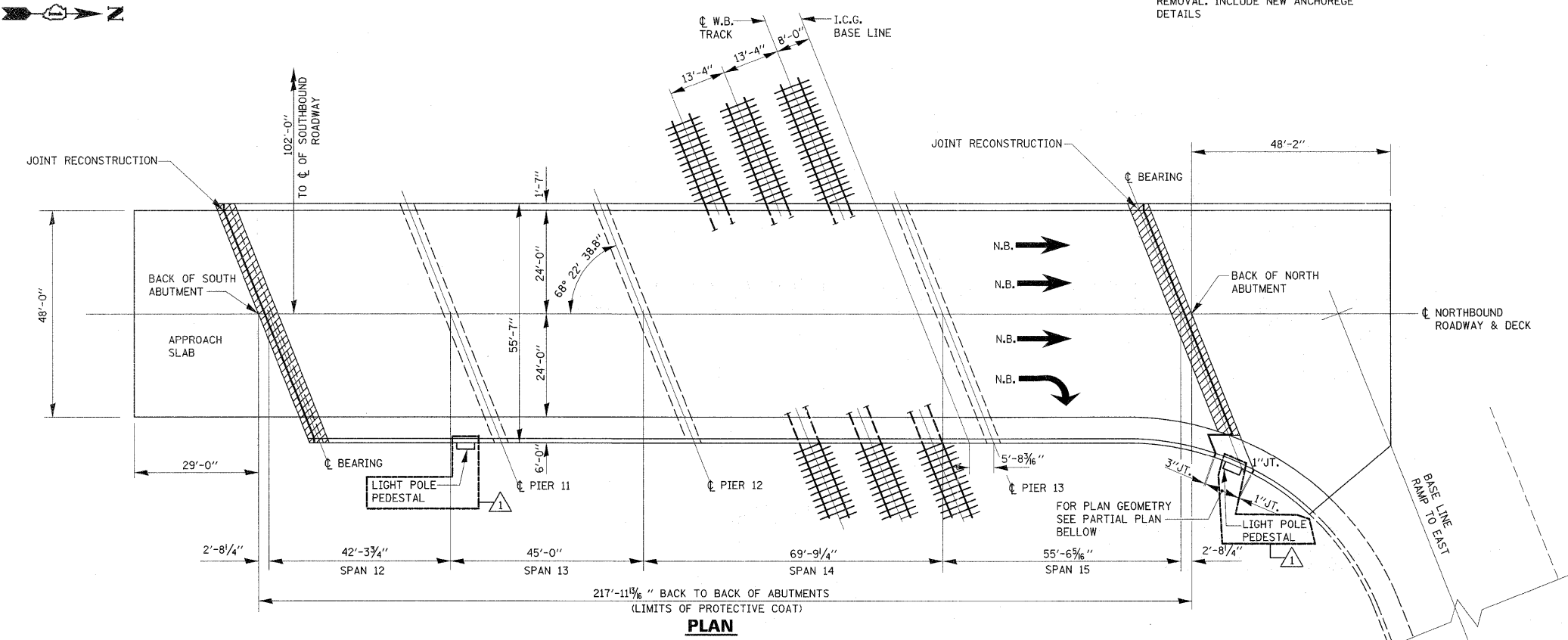


**SECTION C-C  
(PROPOSED)**

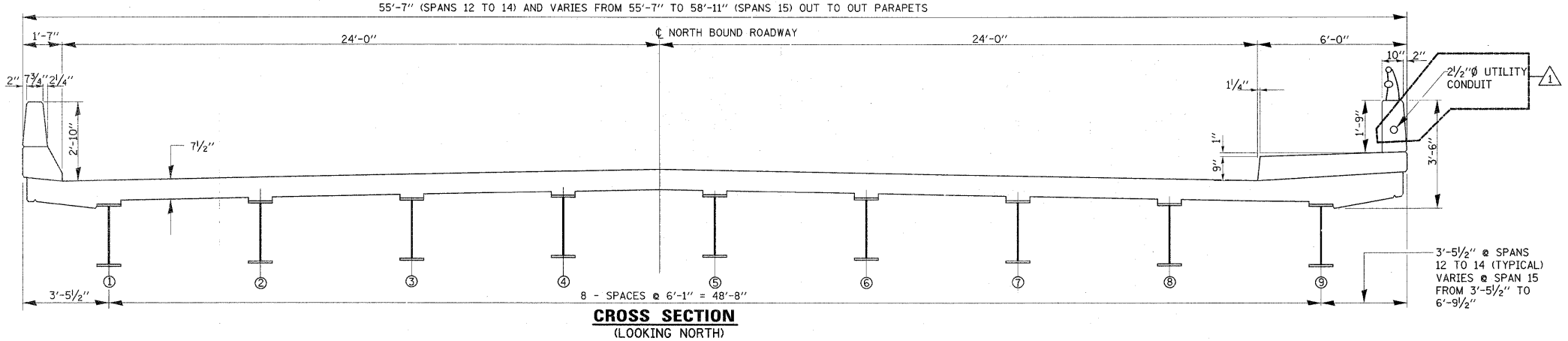
REVISD 5/27/11 MT



**ELEVATION**  
(LOOKING WEST)



**PLAN**



**CROSS SECTION**  
(LOOKING NORTH)

**GENERAL NOTES:**

PLAN DIMENSIONS AND DETAILS RELATIVE TO EXISTING PLANS ARE SUBJECT TO NOMINAL CONSTRUCTION VARIATIONS. THE CONTRACTOR SHALL FIELD VERIFY EXISTING DIMENSIONS AND DETAILS AFFECTING NEW CONSTRUCTION AND MAKE NECESSARY APPROVED ADJUSTMENT PRIOR TO CONSTRUCTION OR ORDERING OF MATERIALS. SUCH VARIATIONS SHALL NOT BE CAUSE FOR ADDITIONAL COMPENSATION FOR A CHANGE IN SCOPE OF THE WORK, HOWEVER, THE CONTRACTOR WILL BE PAID FOR THE QUANTITY ACTUALLY FURNISHED BASED AT THE UNIT PRICE BID FOR THE WORK.

ALL STRUCTURAL STEEL SHALL CONFORM TO AASHTO CLASSIFICATION M-270 GR. 36, UNLESS OTHERWISE NOTED.

REINFORCEMENT BARS DESIGNATED (E) SHALL BE EPOXY COATED.

EXISTING REINFORCEMENT BARS EXTENDING INTO THE REMOVAL AREA SHALL BE CLEANED, STRAIGHTENED AND INCORPORATED INTO THE NEW CONSTRUCTION. ANY REINFORCEMENT BARS THAT ARE DAMAGED DURING CONCRETE REMOVAL SHALL BE REPLACED WITH AN APPROVED BAR SPLICER OR ANCHORAGE SYSTEM. COST INCLUDED WITH CONCRETE REMOVAL.

CONCRETE SUPERSTRUCTURE SHALL HAVE A SEVEN DAY MINIMUM CURE.

REINFORCEMENT BARS SHALL CONFORM TO THE REQUIREMENTS OF ASTM A 706 Gr 60. SEE SPECIAL PROVISIONS.

JOINT OPENINGS SHALL BE ADJUSTED ACCORDING TO ARTICLE 520.04 OF THE STANDARD SPECIFICATIONS. WHEN THE DECK IS POURED AT AN AMBIENT TEMPERATURE OTHER THAN 50° F.

PRIOR TO POURING THE NEW CONCRETE DECK, ALL HEAVY OR LOOSE RUST, LOOSE MILL SCALE, AND OTHER LOOSE OR POTENTIALLY DETRIMENTAL FOREIGN MATERIAL SHALL BE REMOVED FROM THE SURFACES IN CONTACT WITH CONCRETE. TIGHTLY ADHERED PAINT MAY REMAIN UNLESS OTHERWISE NOTED. REMOVAL SHALL BE ACCOMPLISHED BY METHODS THAT WILL NOT DAMAGE THE STEEL AND THE COST WILL BE INCLUDED IN THE PAY ITEM COVERING REMOVAL OF THE EXISTING CONCRETE.

THE REMOVAL OF THE EXISTING JOINT IS INCLUDED IN THE COST OF THE CONCRETE REMOVAL.

FASTENERS SHALL BE AASHTO M 164 TYPE 1, MECHANICALLY GALVANIZED. BOLTS 3/4"Ø, HOLES 9/16"Ø, UNLESS OTHERWISE NOTED.

EXISTING STRUCTURAL STEEL THAT WILL BE IN CONTACT WITH NEW STRUCTURAL STEEL SHALL BE CLEANED AND PAINTED PRIOR TO ERECTION AS REQUIRED BY THE SPECIAL PROVISION "CLEANING AND PAINTING CONTACT SURFACE AREAS OF EXISTING STEEL STRUCTURES".

ALL STRUCTURAL STEEL SHALL BE SHOP PAINTED WITH THE INORGANIC ZINC RICH PRIMER PER AASHTO M300, TYPE 1. COST INCLUDED WITH FURNISHING AND ERECTING STRUCTURAL STEEL.

**TOTAL BILL OF MATERIALS S.N. 016-0318**

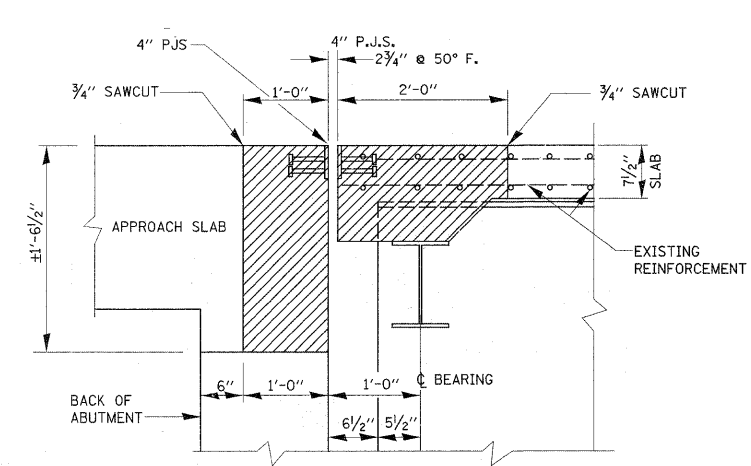
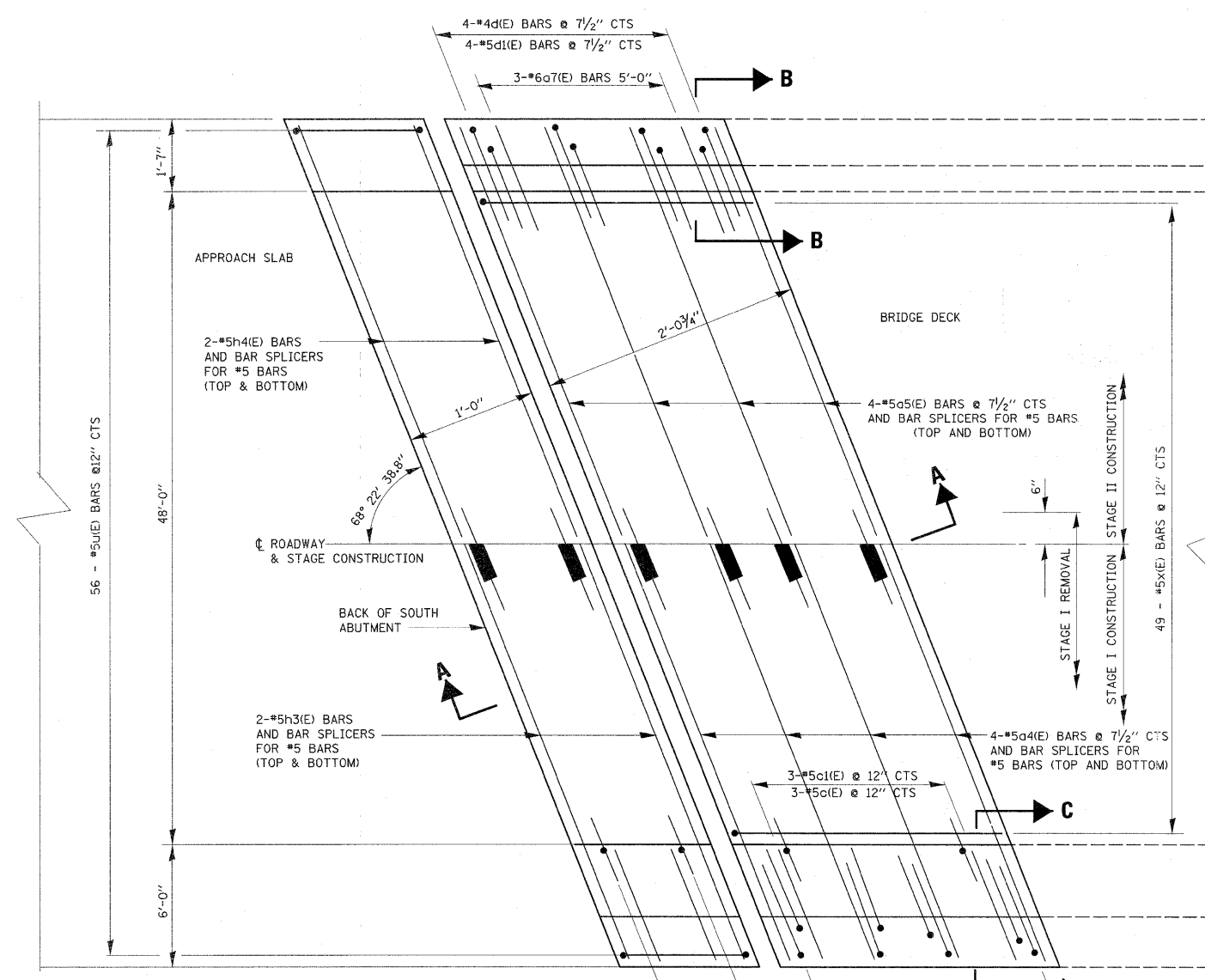
ITEM	UNIT	QUANTITY
REINFORCEMENT BARS (EPOXY COATED)	POUND	2340
CONCRETE REMOVAL	CU. YD.	16.3
CONCRETE SUPERSTRUCTURE	CU. YD.	16.6
PREFORMED JOINT STRIP SEAL	FOOT	117
BAR SPLICERS	EACH	24
STRUCTURAL STEEL REPAIR	POUND	250
PROTECTIVE COAT	SQ. YD.	43
SILICONE JOINT SEALER 2 3/4"	FOOT	12

\*\* NEW CONCRETE AREA ONLY

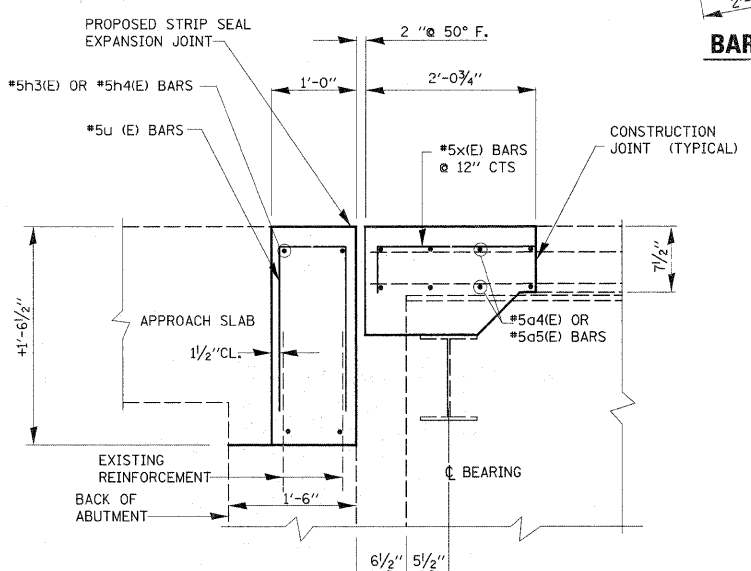
REVISD 5/27/11 MT

**BILL OF MATERIALS**

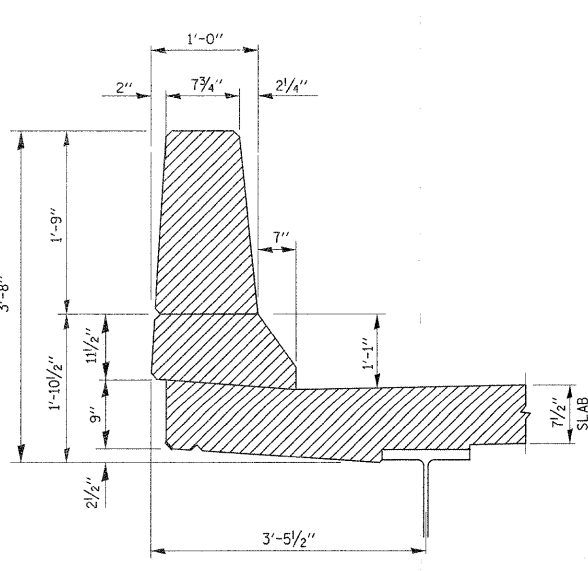
BAR	NO.	SIZE	LENGTH	SHAPE
c4(E)	8	#5	31'-9"	—
c5(E)	8	#5	27'-0"	—
c7(E)	3	#6	5'-0"	—
c(E)	6	#5	5'-9"	—
c1(E)	6	#4	2'-6"	—
d(E)	4	#4	5'-9"	L
d1(E)	4	#5	3'-11"	L
d2(E)	4	#6	3'-9"	J
d3(E)	4	#4	5'-6"	J
h3(E)	4	#5	32'-0"	—
h4(E)	4	#5	27'-3"	—
u(E)	56	#5	3'-7"	□
u1(E)	4	#4	2'-1"	□
x(E)	49	#5	2'-7"	□
REINFORCEMENT BARS (EPOXY COATED)			POUND	1230
CONCRETE REMOVAL			CU.YD.	8.0
CONCRETE SUPERSRUCTURE			CU.YD.	8.0



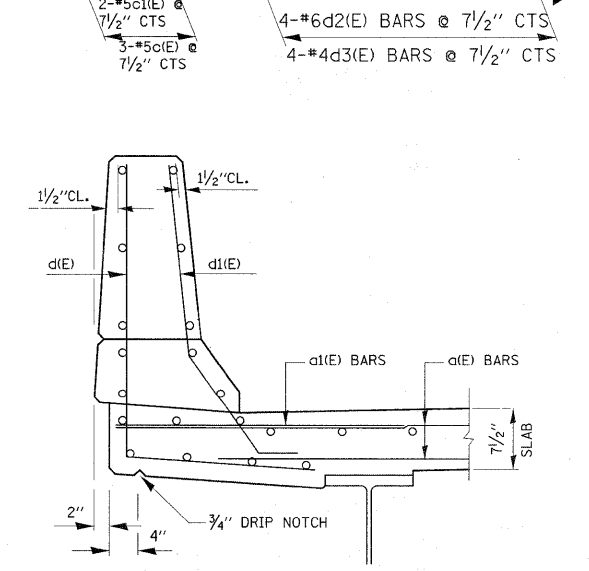
**SECTION A-A (EXISTING)**



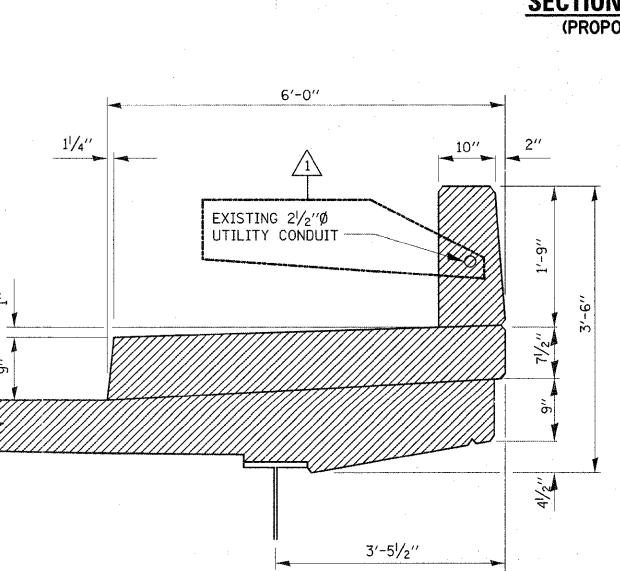
**SECTION A-A (PROPOSED)**



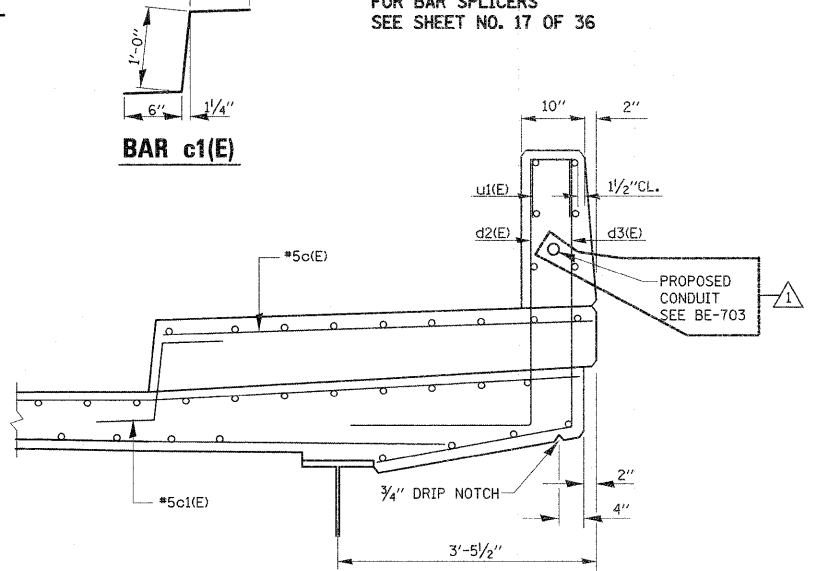
**SECTION B-B (EXISTING)**



**SECTION B-B (PROPOSED)**



**SECTION C-C (EXISTING)**

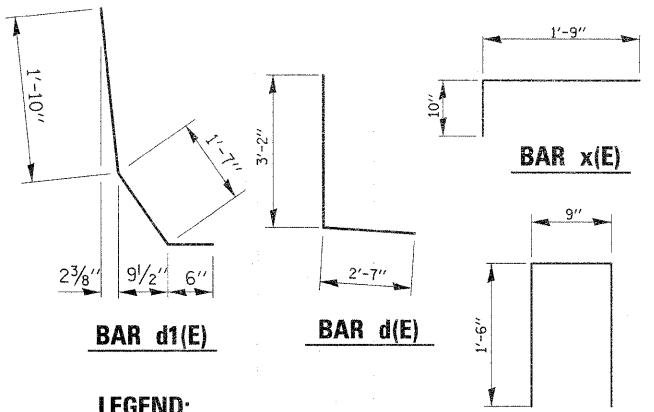
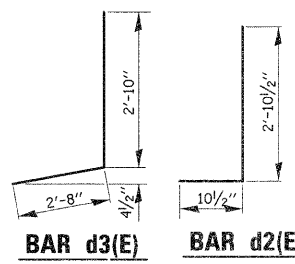
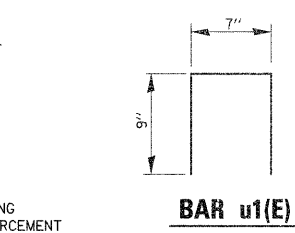


**SECTION C-C (PROPOSED)**

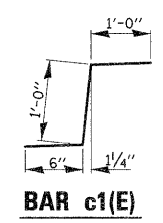
**LEGEND:**

HATCHED AREA INDICATES CONCRETE REMOVAL

**NOTE:**  
FOR BAR SPLICERS SEE SHEET NO. 17 OF 36



**BAR u(E)**



REVISD 5/27/11 MT

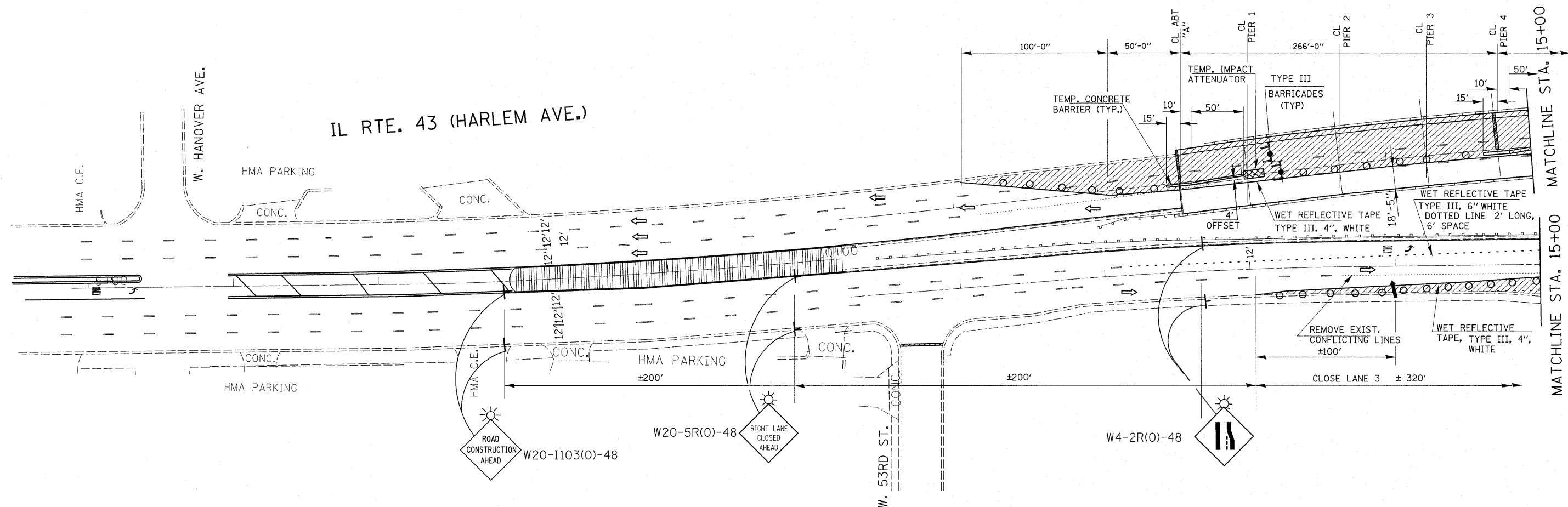
FILE NAME =	USER NAME = tmsakosmv	DESIGNED -	REVISED -
c:\p\work\p\dot\tmsakosmv\d0101671\016-0317-0318.dgn		DRAWN -	REVISED -
PLOT SCALE = 50.0000" / IN.		CHECKED -	REVISED -
PLOT DATE = 6/2/2011		DATE -	REVISED -

**STATE OF ILLINOIS  
DEPARTMENT OF TRANSPORTATION**







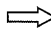
**IL 43 NB (HARLEM AVENUE) OVER C.N.RR  
TRANVERSE EXPANSION JOINT DETAILS  
S.N. 016-0318**

F.A.P. RTE.	SECTION	COUNTY	TOTAL SHEETS	SHEET NO.
848	0708 (.2 & .2A) BR	COOK	36	14
CONTRACT NO. 60L53			ILLINOIS FED. AID PROJECT	

SCALE: SHEET NO. 14 OF 19 SHEETS STA. TO STA.



**SYMBOLS**

-  TYPE II BARRICADE WITH FLASHING LIGHT
-  WORK AREA
-  SIGN ON PORTABLE OR PERMANENT SUPPORT
-  DIRECTION INDICATOR BARRICADE WITH MONO-DIRECTIONAL STEADY BURNING LIGHT
-  TYPE II BARRICADE OR DRUM, 20' CTS IN TAPER, 50' IN WEAVE, 100' IN TANGENT
-  ARROW BOARD
-  DIRECTION OF TRAFFIC

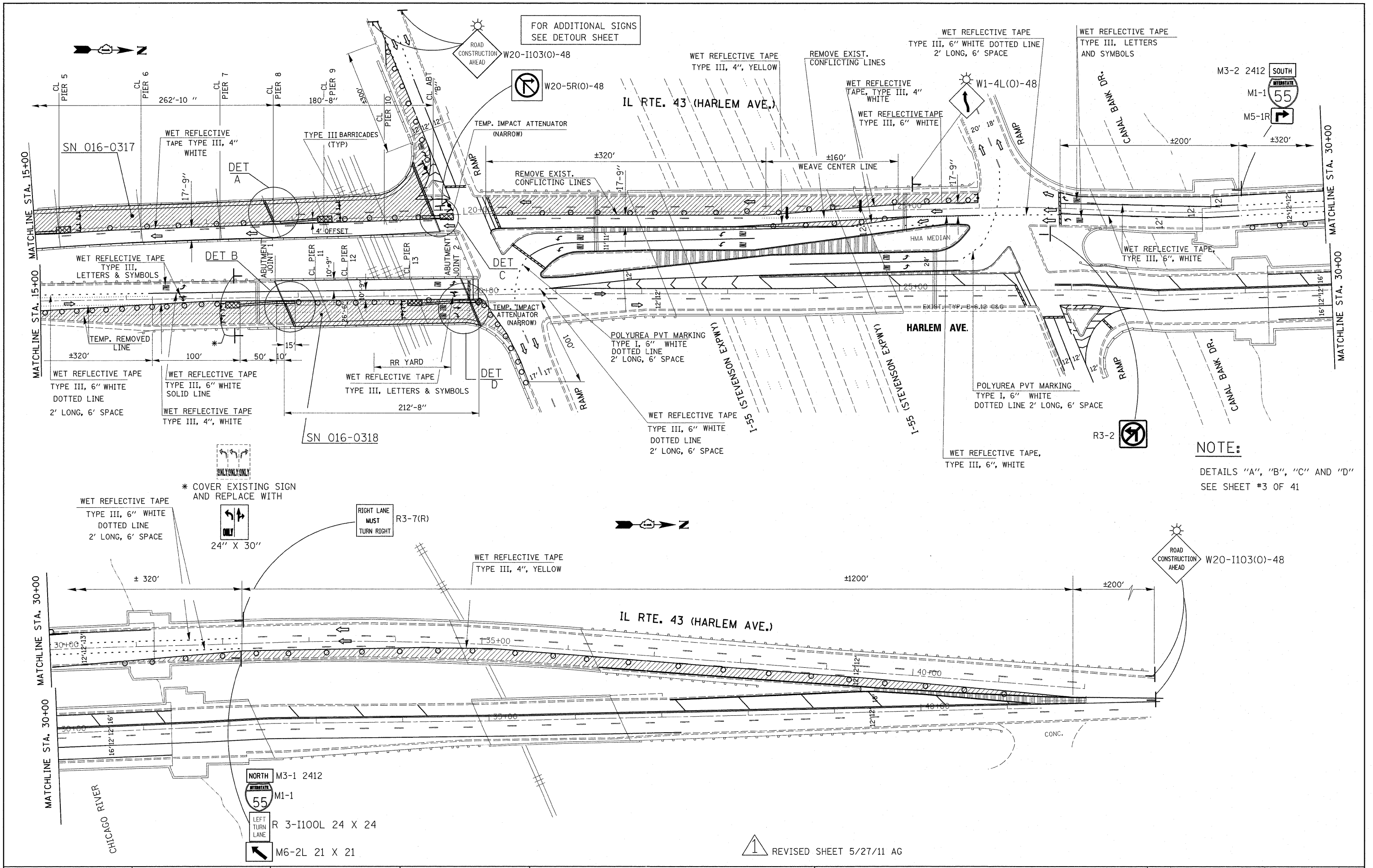
**NOTES:**

- ① EXISTING CONFLICTING PAVEMENT MARKING LINES SHALL BE REMOVED.
- ② CONTINUOUS REFLECTIVE TEMPORARY PAVEMENT MARKING TAPE SHALL BE PLACED THROUGHOUT THE TAPER AND FOR 300' ALONG SIDE THE WORK AREA WHERE THE CLOSURE TIME IS GREATER THAN FOURTEEN DAYS. THE LEFT EDGE LINE SHALL BE YELLOW AND THE RIGHT EDGE LINE SHALL BE WHITE.
- ③ ALL SIGNS SHALL BE POST MOUNTED IF THE CLOSURE TIME EXCEEDS FOUR HOURS.

 REVISED SHEET 5/27/11 AG

FILE NAME =	USER NAME = Hamdanah	DESIGNED -	REVISED -	<b>STATE OF ILLINOIS DEPARTMENT OF TRANSPORTATION</b>	<b>IL 43 (HARLEM AVE) OVER CN RR TRAFFIC CONTROL PLAN. STAGE 1 (SN 016-0317;-0318)</b>				F.A.P. RTE.	SECTION	COUNTY	TOTAL SHEETS	SHEET NO.
es:\pw_work\pwsdot\hamdanah\d0212247\0170710-sh1-plan.dgn		DRAWN -	REVISED -		348	0708 (.2 & .02A) BR	COOK	36	20				
PLOT SCALE = 5/8" = 1' / IN.		CHECKED -	REVISED -		SCALE: SHEET NO. OF SHEETS STA. TO STA.				CONTRACT NO. 60L53				
PLOT DATE = 6/2/2011		DATE -	REVISED -		ILLINOIS FED. AID PROJECT								

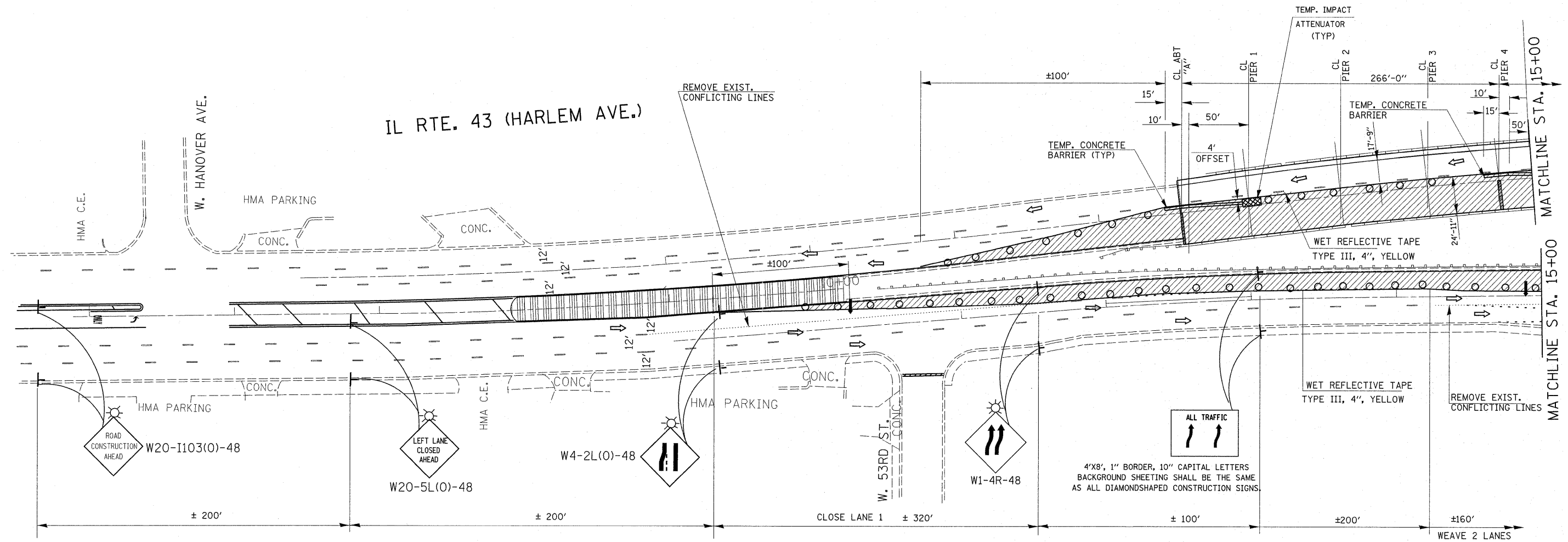




**NOTE:**  
 DETAILS "A", "B", "C" AND "D"  
 SEE SHEET #3 OF 41

REVISION 1 REVISED SHEET 5/27/11 AG

FILE NAME =	JUSER_NAME = Hemandah	DESIGNED -	REVISED -	<b>STATE OF ILLINOIS DEPARTMENT OF TRANSPORTATION</b>	<b>IL 43 (HARLEM AVE) OVER CN RR TRAFFIC CONTROL PLAN. STAGE 1 (SN 016-0317;-0318)</b>	F.A.P. RTE.	SECTION	COUNTY	TOTAL SHEETS	SHEET NO.	
ca:\pw\work\pwwdot\hemandah\d0212247\0178710-sht-plan.dgn	PLOT SCALE = 50.0000' / IN.	DRAWN -	REVISED -			348	0708 (.2 & .2A) BR	COOK	36	21	
PLOT DATE = 6/2/2011	DATE -	CHECKED -	REVISED -			CONTRACT NO. 60L53					
		DATE -	REVISED -			ILLINOIS FED. AID PROJECT					



**NOTES:**

- ① EXISTING CONFLICTING PAVEMENT MARKING LINES SHALL BE REMOVED.
- ② CONTINUOUS REFLECTIVE TEMPORARY PAVEMENT MARKING TAPE SHALL BE PLACED THROUGHOUT THE TAPER AND FOR 300' ALONG SIDE THE WORK AREA WHERE THE CLOSURE TIME IS GREATER THAN FOURTEEN DAYS. THE LEFT EDGE LINE SHALL BE YELLOW AND THE RIGHT EDGE LINE SHALL BE WHITE.
- ③ ALL SIGNS SHALL BE POST MOUNTED IF THE CLOSURE TIME EXCEEDS FOUR HOURS.

**SYMBOLS**

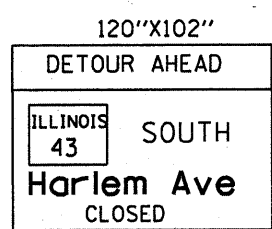
- TYPE II BARRICADE WITH FLASHING LIGHT
- WORK AREA
- SIGN ON PORTABLE OR PERMANENT SUPPORT
- DIRECTION INDICATOR BARRICADE WITH MONO-DIRECTIONAL STEADY BURNING LIGHT
- TYPE II BARRICADE OR DRUM, 20' CTS IN TAPER, 50' IN WEAVE, 100' IN TANGENT
- ARROW BOARD
- DIRECTION OF TRAFFIC

REVISED SHEET 5/27/11 AG

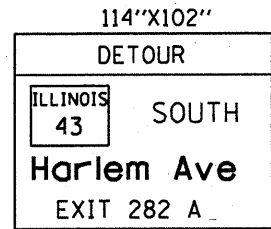
FILE NAME = es:\pw_work\pw\dot\hamdanah\d0212247\0178710-shit-plan.dgn	USER NAME = Hamdanah	DESIGNED -	REVISED -	<b>STATE OF ILLINOIS DEPARTMENT OF TRANSPORTATION</b>	<b>IL 43 (HARLEM AVE) OVER CN RR TRAFFIC CONTROL PLAN. STAGE 2 (SN 016-0317;-0318)</b>			F.A.P RTE. 348	SECTION 0708 (.2 & .02A) BR	COUNTY COOK	TOTAL SHEETS 36	SHEET NO. 22
PLOT SCALE = 50.0000' / IN.	CHECKED -	REVISED -	REVISED -		SCALE:	SHEET NO.	OF SHEETS	STA.	TO STA.	CONTRACT NO. 60L53		
PLOT DATE = 6/2/2011	DATE -	REVISED -	REVISED -		ILLINOIS FED. AID PROJECT							



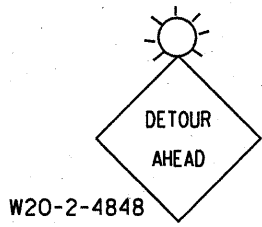




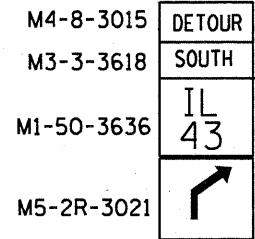
1



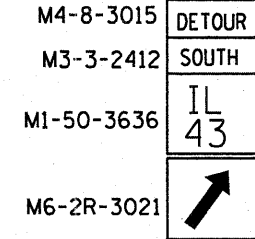
2



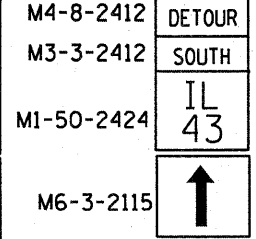
3



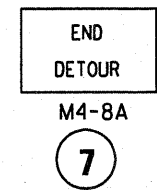
4



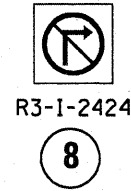
5



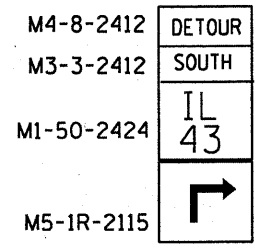
6



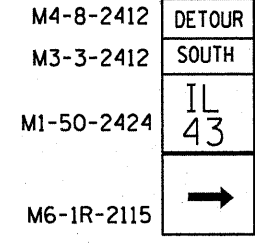
7



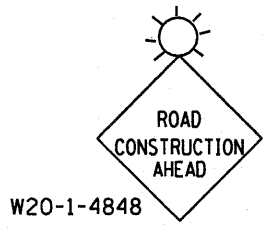
8



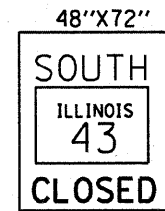
9



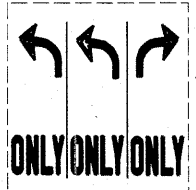
10



11

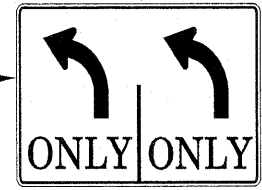


12

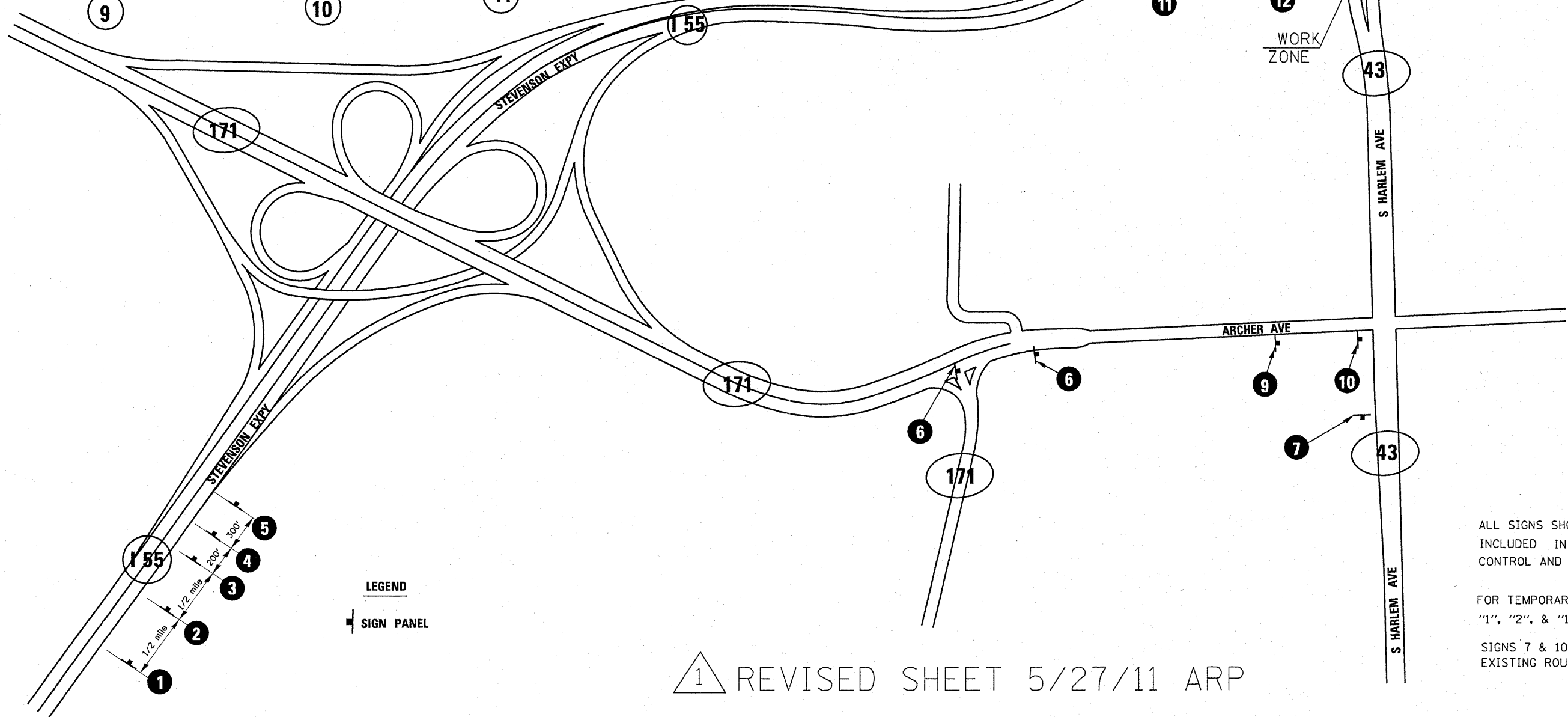


EXISTING SIGN  
(COVER EXISTING SIGN AND REPLACE WITH PROPOSED SIGN)

13



PROPOSED SIGN



LEGEND  
SIGN PANEL

1 REVISIED SHEET 5/27/11 ARP

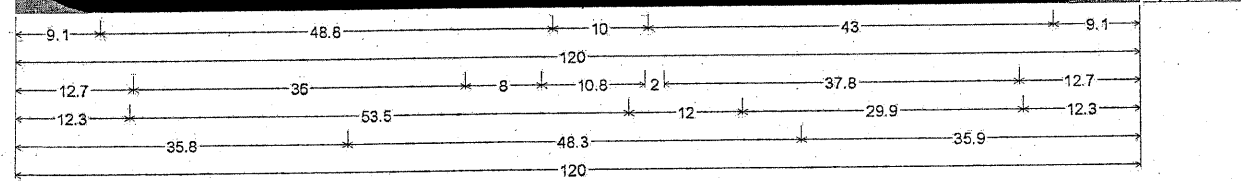
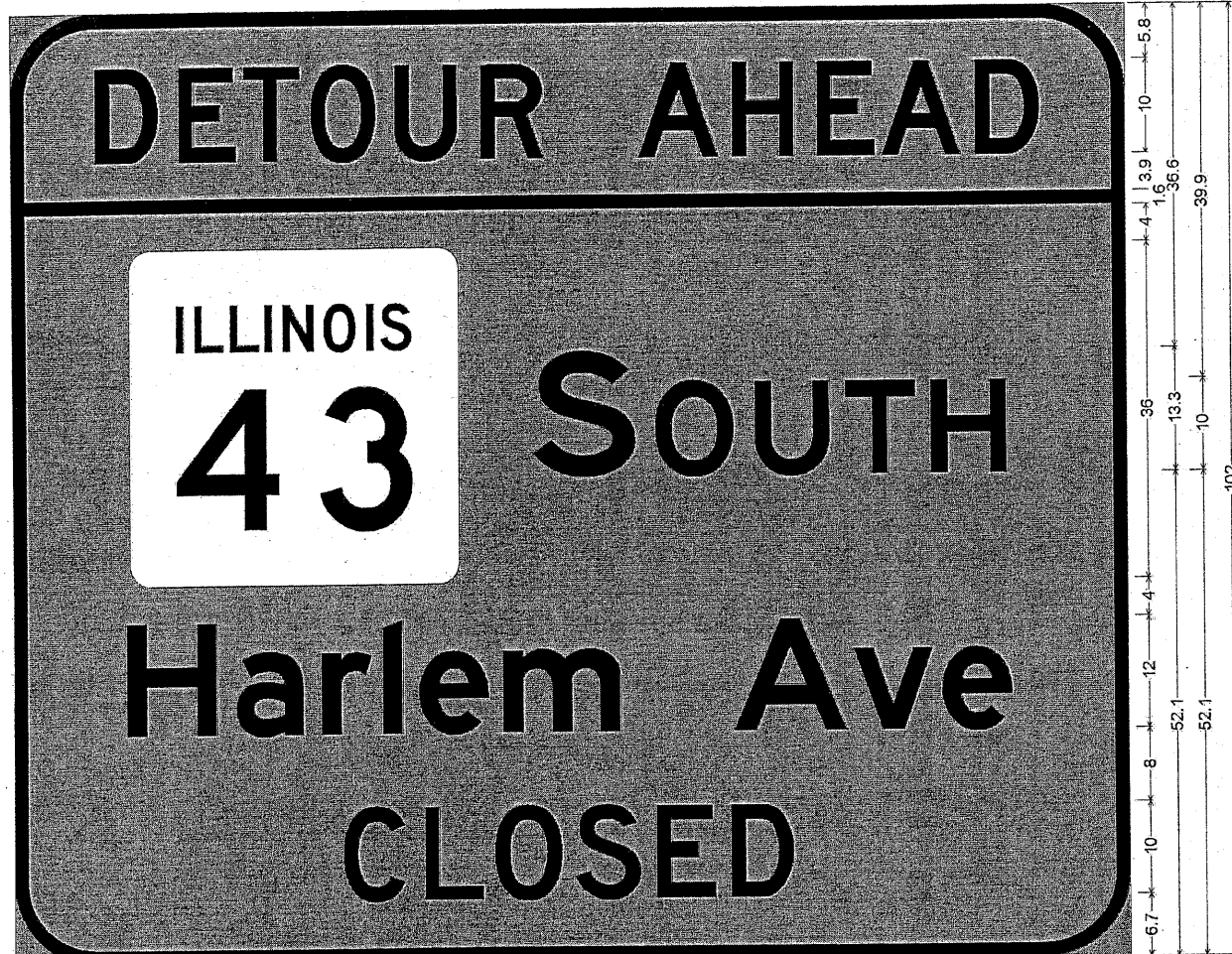
ALL SIGNS SHOWN ON THIS SHEET ARE INCLUDED IN THE COST OF "TRAFFIC CONTROL AND PROTECTION, (SPECIAL)".

FOR TEMPORARY ROAD INFORMATION SIGN "1", "2", & "12" SEE SHEET #2 & 3 OF 3

SIGNS 7 & 10 TO BE MOUNTED ABOVE EXISTING ROUTE SIGN.

FILE NAME =	USER NAME = petelar	DESIGNED -	REVISED -	STATE OF ILLINOIS DEPARTMENT OF TRANSPORTATION	I-55 NB TO IL 43 S.B. DETOUR DURING STAGE I	F.A.P. RTE.	SECTION	COUNTY	TOTAL SHEETS	SHEET NO.	
ct:\pw\work\pwidot\petelar\8263634\0149811-ahp-plan.dgn	11-ahp-plan.dgn	DRAWN -	REVISED -			348	0708 (L2 & .2A) BR	COOK	36	27	
PLOT SCALE = 100.0000 "/JN.		CHECKED -	REVISED -			CONTRACT NO. 60L53		ILLINOIS FED. AID PROJECT			
PLOT DATE = 6/2/2011		DATE -	REVISED -			SCALE:	SHEET NO. 1 OF 3 SHEETS	STA.	TO STA.		

1

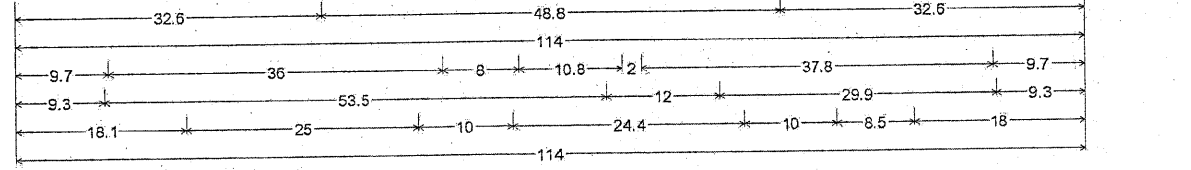


9.0" Radius, 1.5" Border, Black on Orange;  
 "DETOUR AHEAD" D 2K; "SOUTH" E 2K; "Harlem Ave" E 2K; "CLOSED" D 2K;  
 Table of letter and object lefts.

D	E	T	O	U	R	A	H	E	A	D
9.1	18.1	25.1	32.6	41.9	51.1	67.9	77.9	87.1	94.1	104.1
-0.0										
S	O	U	T	H						
12.7	56.7	69.5	80.2	90.0	99.2					
-0.0										
H	a	r	l	e	m	A	v	e		
12.3	24.2	33.5	40.4	44.3	53.3	77.8	90.8	100.3		
-0.0										
C	L	O	S	E	D					
35.8	44.8	52.3	61.0	69.4	77.3					

△ Revised Sheet 5/27/11 ARP

2



12.0" Radius, 2.0" Border, Black on Orange;  
 "DETOUR" D 2K; "SOUTH" E 2K; "Harlem Ave" E 2K; "EXIT 282 A" D 2K;  
 Table of letter and object lefts.

D	E	T	O	U	R			
32.6	41.6	48.6	56.1	65.4	74.6			
-0.0								
S	O	U	T	H				
9.7	53.7	66.5	77.2	87.0	96.2			
-0.0								
H	a	r	l	e	m	A	v	e
9.3	21.2	30.5	37.4	41.3	50.3	74.8	87.8	97.3
-0.0								
E	X	I	T	2	8	2	A	
18.1	25.3	33.8	36.9	53.1	61.9	70.7	87.5	

**NOTES:**

1. USE BLACK LETTERING ON ORANGE BACKGROUND.
2. ERECT SIGNS ① & ② IN ADVANCE OF THE LOCATION FOR THE "DETOUR AHEAD" SIGN AT LOCATIONS AS DIRECTED BY THE ENGINEER.
3. SEE SPECIAL PROVISION FOR "TEMPORARY INFORMATION SIGNING" FOR ADDITIONAL INFORMATION. ALL SIGNS SHOWN ON THIS SHEET ARE INCLUDED IN THE COST OF "TRAFFIC CONTROL AND PROTECTION, (SPECIAL)".
4. SIGN ASSEMBLY "1" EQUALS TO 85.0 SQ. FT. SIGN "2" EQUALS TO 80.75 SQ. FT.

D149811-shi-plan.dgn 6/2/2011 10:42:53 AM User:patele

3



6.0" Radius, 1.0" Border, Black on Orange;

"SOUTH" D 2K; "CLOSED" D 2K;

Table of letter and object lefts.

S	O	U	T	H
7.1	15.2	22.7	29.3	35.5

43
6.0

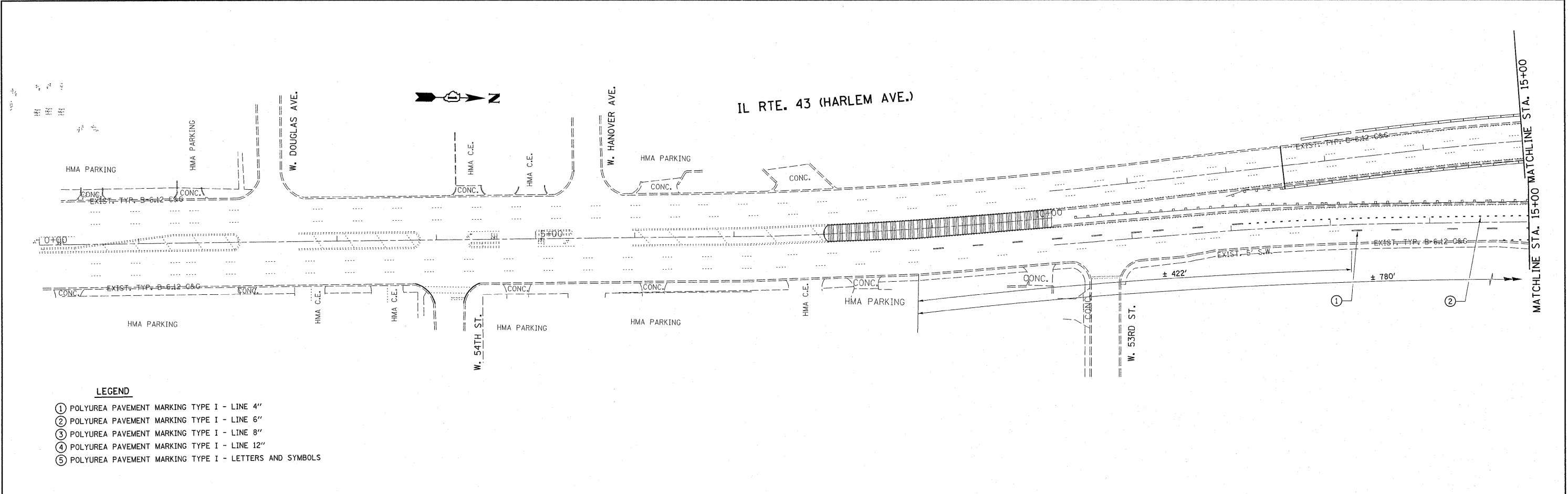
C	L	O	S	E	D
4.7	11.9	17.9	24.8	31.6	37.9

△ Added sheet 5/27/11 ARP

**NOTES:**

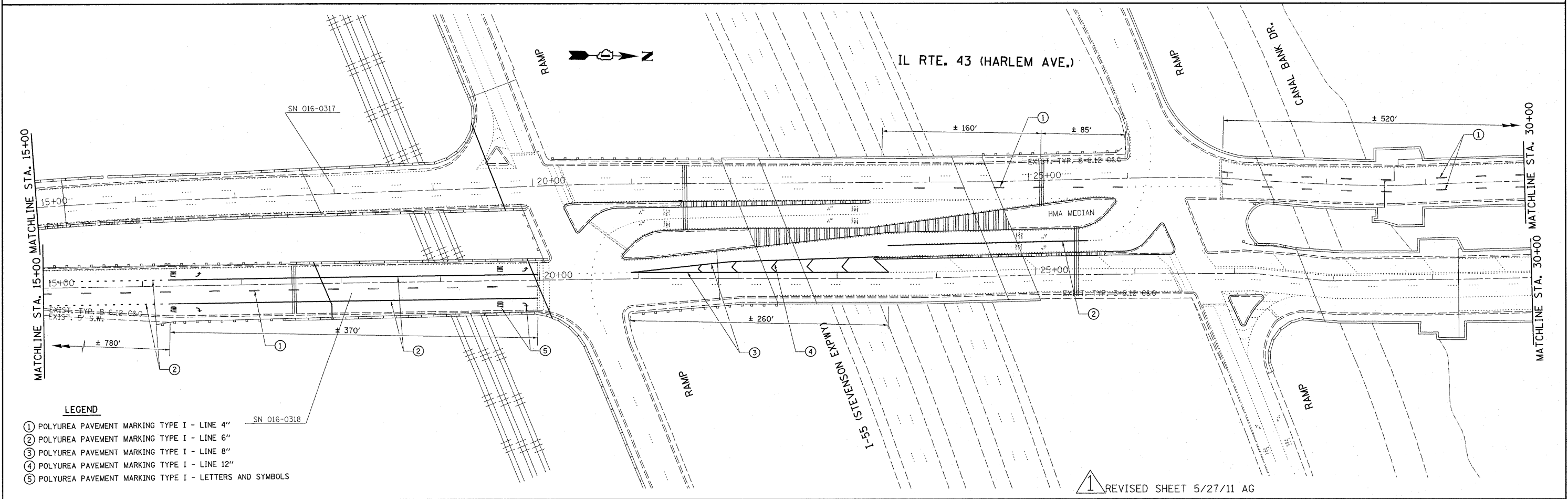
1. USE BLACK LETTERING ON ORANGE BACKGROUND.
2. ERECT SIGN ③ 200 FT PAST THE "ROAD CONSTRUCTION AHEAD" SIGN AND 300 FT IN ADVANCE OF THE LOCATION FOR THE "RIGHT/LEFT TURN ONLY" SIGN AT LOCATIONS DIRECTED BY THE ENGINEER.
3. SEE SPECIAL PROVISION FOR "TEMPORARY INFORMATION SIGNING" FOR ADDITIONAL INFORMATION. ALL SIGNS SHOWN ON THIS SHEET ARE INCLUDED IN THE COST OF "TRAFFIC CONTROL AND PROTECTION, (SPECIAL)".
4. SIGN ASSEMBLY "3" EQUALS TO 24.0 SQ. FT.

FILE NAME =	USER NAME = petalar	DESIGNED -	REVISED -	<b>STATE OF ILLINOIS DEPARTMENT OF TRANSPORTATION</b>	IL 43 (HARLEM AVE) OVER CN RR TEMPORARY TRAFFIC INFORMATION SIGNING	F.A.P. RTE.	SECTION	COUNTY	TOTAL SHEETS	SHEET NO.
cr:\pwork\pwork\petalar\d0263634\0149111-ahp-plan.dgn	11-ahp-plan.dgn	DRAWN -	REVISED -			348	0708 (.2 & .2A) BR	COOK	36	28A
PLOT SCALE = 100.0000' / IN.		CHECKED -	REVISED -			CONTRACT NO. 60L53				
PLOT DATE = 5/2/2011		DATE -	REVISED -			ILLINOIS FED. AID PROJECT				
				SCALE:	SHEET NO. 3 OF 3 SHEETS	STA.	TO STA.			



**LEGEND**

- ① POLYUREA PAVEMENT MARKING TYPE I - LINE 4"
- ② POLYUREA PAVEMENT MARKING TYPE I - LINE 6"
- ③ POLYUREA PAVEMENT MARKING TYPE I - LINE 8"
- ④ POLYUREA PAVEMENT MARKING TYPE I - LINE 12"
- ⑤ POLYUREA PAVEMENT MARKING TYPE I - LETTERS AND SYMBOLS



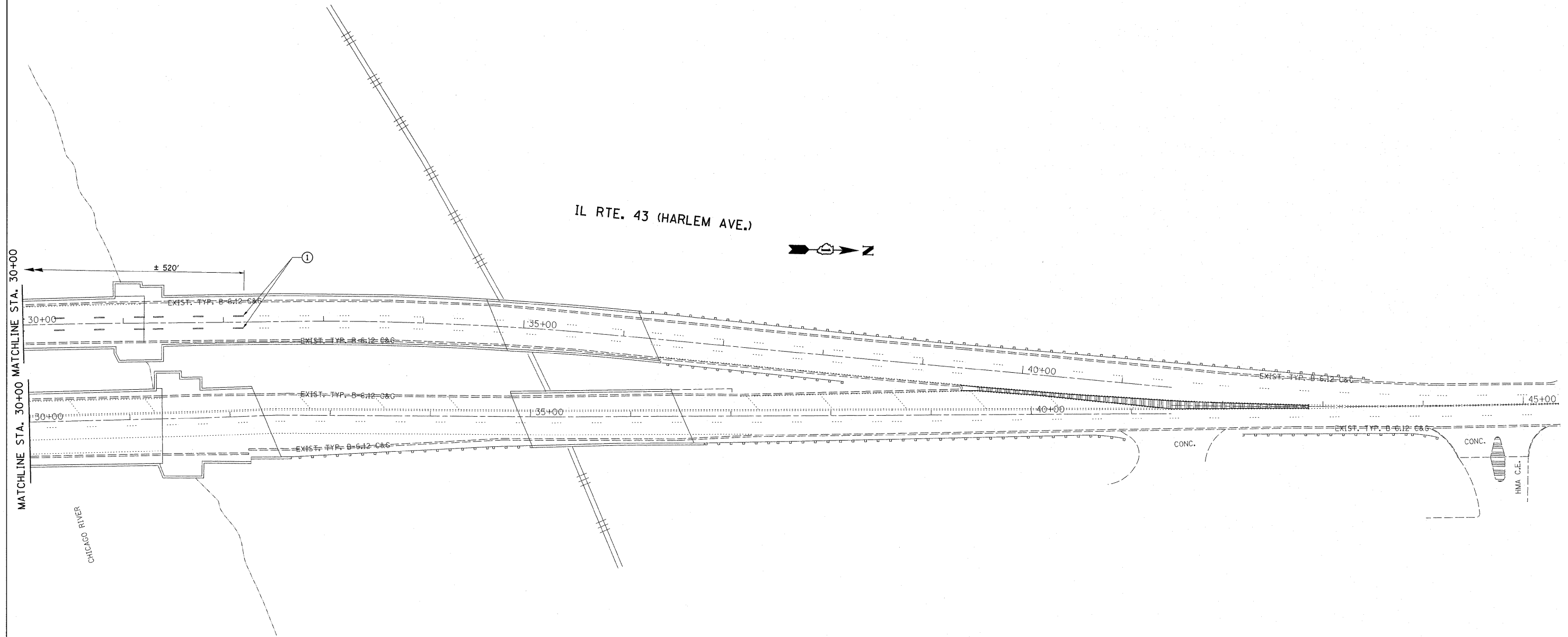
**LEGEND**

- ① POLYUREA PAVEMENT MARKING TYPE I - LINE 4"
- ② POLYUREA PAVEMENT MARKING TYPE I - LINE 6"
- ③ POLYUREA PAVEMENT MARKING TYPE I - LINE 8"
- ④ POLYUREA PAVEMENT MARKING TYPE I - LINE 12"
- ⑤ POLYUREA PAVEMENT MARKING TYPE I - LETTERS AND SYMBOLS

① REVISED SHEET 5/27/11 AG

FILE NAME =	USER NAME = Hamdanah	DESIGNED -	REVISED -	<b>STATE OF ILLINOIS DEPARTMENT OF TRANSPORTATION</b>	<b>IL 43 (HARLEM AVE) OVER CN RR PAVEMENT MARKING PLAN</b>				F.A.P. RTE.	SECTION	COUNTY	TOTAL SHEETS	SHEET NO.
at:\pwork\pwork\hamdanah\d0212247\017\710-shr-plan.dgn	PLOT SCALE = 50.0000' / IN.	DRAWN -	REVISED -		348	0798(0.2 & 0.2)BR	COOK	36	29				
PLOT DATE = 6/2/2011	DATE -	CHECKED -	REVISED -		SCALE: 1"=50'    SHEET NO.    OF    SHEETS    STA. 0+00    TO STA. 30+00				CONTRACT NO. 60L53				
		DATE -	REVISED -		[ILLINOIS] FED. AID PROJECT								

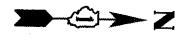




MATCHLINE STA. 30+00

CHICAGO RIVER

IL RTE. 43 (HARLEM AVE.)



- LEGEND**
- ① POLYUREA PAVEMENT MARKING TYPE I - LINE 4"
  - ② POLYUREA PAVEMENT MARKING TYPE I - LINE 6"
  - ③ POLYUREA PAVEMENT MARKING TYPE I - LINE 8"
  - ④ POLYUREA PAVEMENT MARKING TYPE I - LINE 12"
  - ⑤ POLYUREA PAVEMENT MARKING TYPE I - LETTERS AND SYMBOLS

↑ REVISED SHEET 5/27/11 AG

FILE NAME =	USER NAME = Hamdanah	DESIGNED -	REVISED -
ct:\pwork\pwork\hamdanah\0212247\0170718-sht-plan.dgn		DRAWN -	REVISED -
	PLOT SCALE = 50.0000' / IN.	CHECKED -	REVISED -
	PLOT DATE = 6/2/2011	DATE -	REVISED -

**STATE OF ILLINOIS  
DEPARTMENT OF TRANSPORTATION**

**IL 43 (HARLEM AVE) OVER CN RR  
PAVEMENT MARKING PLAN**

SCALE: 1"=50' SHEET NO. OF SHEETS STA. 30+00 TO STA.

F.A.P. RTE.	SECTION	COUNTY	TOTAL SHEETS	SHEET NO.
348	0798(0.2 & 0.2)BR	COOK	36	30
CONTRACT NO. 60L53				
ILLINOIS FED. AID PROJECT				

