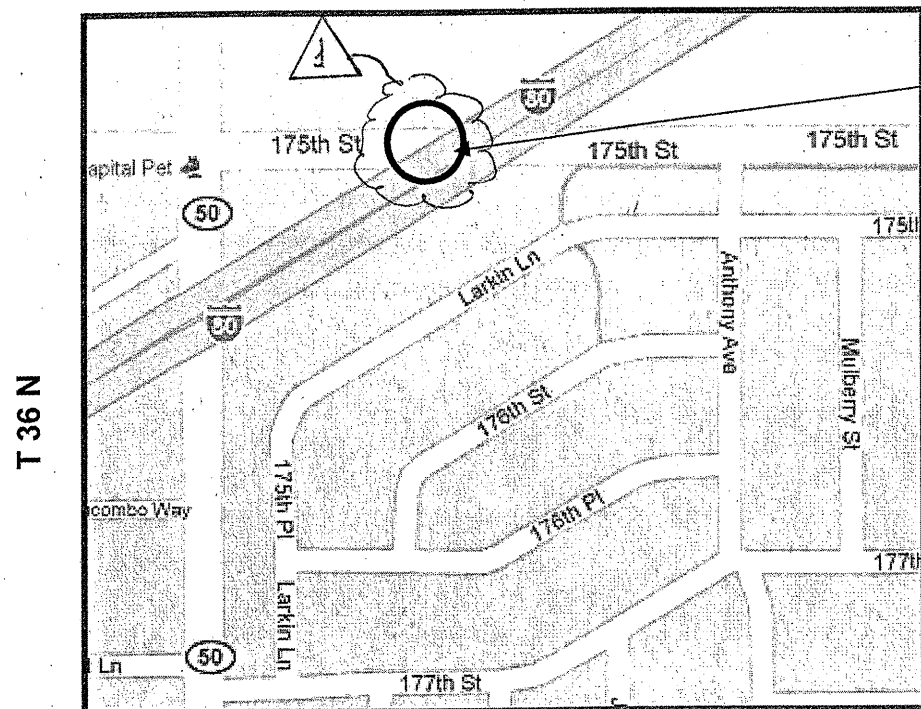


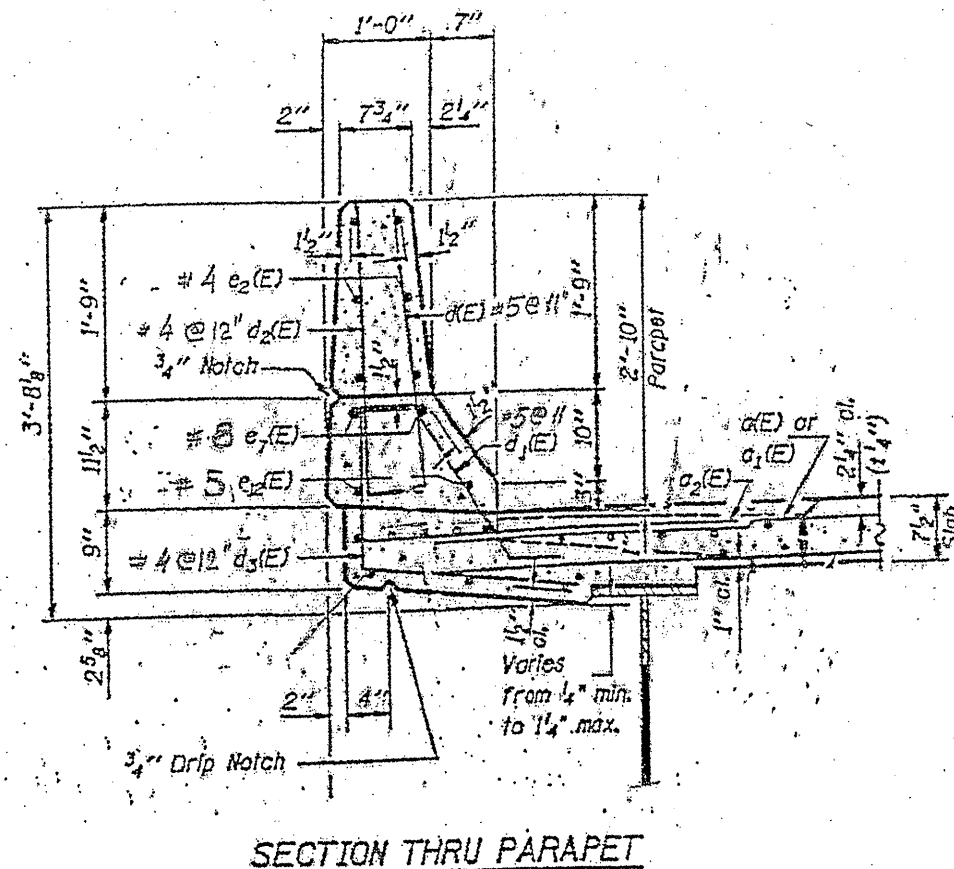
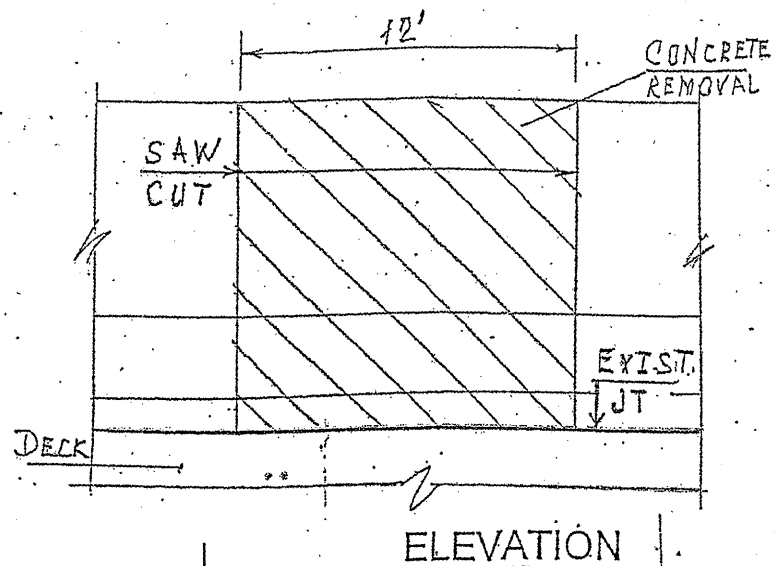
ROUTE	SECTION	COUNTY	TOTAL SHEETS	SHEET NUMBER
VARIOUS	2010-069-I	VARIOUS	34	25

Contract 60L54

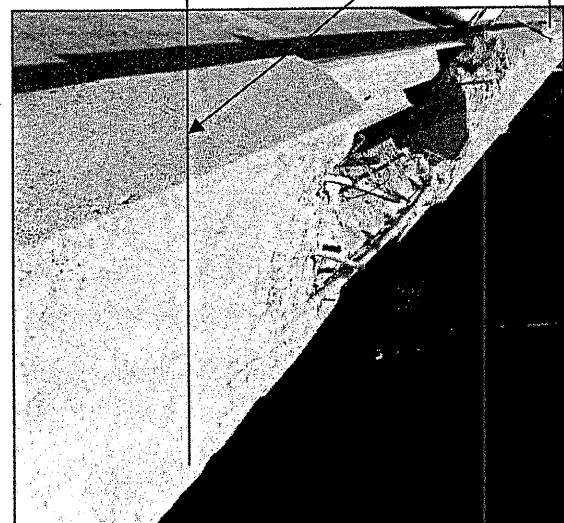
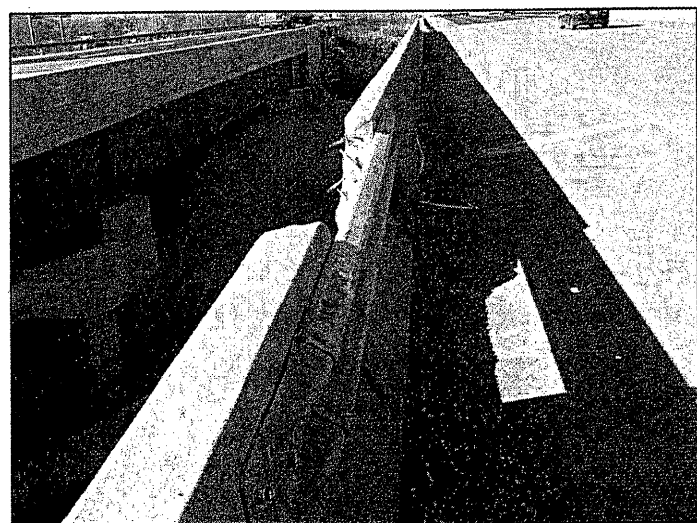
R 13 E



LOCATION 14: I-80 WB OVER 175th ST, EAST OF I-57 EXIT, ON SN 016-0076, LEFT SIDE.



CITY OF COUNTRY CLUB HILLS
BREMEN TOWNSHIP
COOK COUNTY



PARAPET REPAIR

BRIDGE PARAPET REPAIR
FOR MORE DETAILS SEE SHEET #10

BAR	NO	SIZE	LENGTH	SHAPE
e ₂ (E)	6	4	11'-10"	—
e ₁₂ (E)	2	5	11'-10"	—
e ₇ (E)	2	8	11'-10"	—
d(E)	14	5	3'-0"	┌
d ₂ (E)	13	4	3'-0"	┌
REINFORCEMENT BARS, EPOXY COATED			LBS	205
CONCRETE SUPERSTRUCTURE			CU. YDS	1.4
CONCRETE REMOVAL			CU. YDS	1.4
MECHANICAL SPLICE			EACH	20

FOR INFORMATION ONLY

BAR "d" & "d2"

TRAFFIC DATA:

I-80 SPEED LIMIT = 55 MPH

2008 ADT = 98900

ILLINOIS DEPARTMENT OF TRANSPORTATION

LOCATION: 14
I-80 WB
OVER 175th STREET

Revised 05/26-2011 J.G.