


ROUTE	SECTION	COUNTY	TOTAL SHEETS	SHEET NUMBER
VARIOUS	2010-069-I	COOK & WILL	34 *	1

FOR INDEX OF SHEETS SEE SHEET 2

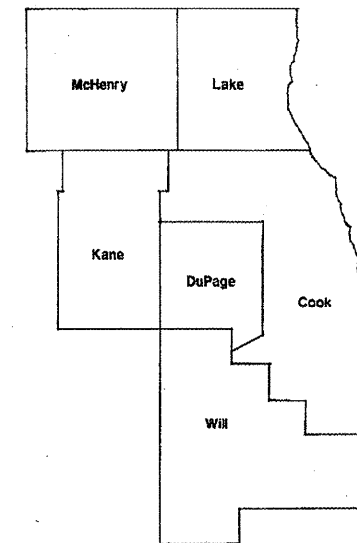
* 34 + 5 = 39 

CONTRACT NO. 60L54

STATE OF ILLINOIS
DEPARTMENT OF TRANSPORTATION
DIVISION OF HIGHWAYS
DISTRICT ONE

D-91-708-10

PROPOSED HIGHWAY PLANS



VARIOUS ROUTES
VARIOUS LOCATIONS
SECTION 2010-069-I
CONCRETE BARRIER WALL AND
BRIDGE PARAPET REPAIRS
COOK & WILL COUNTIES
C-91-708-10

IMPROVEMENTS ARE LOCATED IN THE CITIES OF CHICAGO, PARK RIDGE, COUNTRY CLUB HILLS AND IN THE VILLAGES OF NEW LENOX, LANSING, INDIAN HEAD PARK AND MATTESON.

STATE OF ILLINOIS
DEPARTMENT OF TRANSPORTATION
DIVISION OF HIGHWAYS

SUBMITTED: APRIL 7 2011
Diane M. O'Keefe
DEPUTY DIRECTOR OF HIGHWAYS, REGION ENGINEER

May 13 2011
Scott E. Still P.E.
acting ENGINEER OF DESIGN AND ENVIRONMENT

May 13 2011
Christina M. Reed
DIRECTOR OF HIGHWAYS, CHIEF ENGINEER


PRINTED BY THE AUTHORITY
OF THE STATE OF ILLINOIS

J.U.L.I.E.: JOINT UTILITY LOCATION
INFORMATION FOR EXCAVATION
(800) 892-0123 OR 811

C.U.A.N
CHICAGO UTILITY ALERT NETWORK
(312) 744-7000

PROJECT ENGINEER: ROBERT BORO (847) 705-4178
PROJECT MANAGER: ISSAM RAYYAN

CONTRACT NO. 60L54

 Rev. 6-2-11

INDEX OF SHEETS

ROUTE	SECTION	COUNTY	TOTAL SHEETS	SHEET NUMBER
VARIOUS	2010-069-1	VARIOUS	34	2

SHEET NO DESCRIPTION

Contract 60L54

- 1 TITLE SHEET
- 2 INDEX OF SHEETS
- 3 STATE STANDARDS
- 1 4-4A GENERAL NOTES
- 5-6 SUMMARY OF QUANTITIES
- 7 SCHEDULE OF QUANTITIES
- 8 TYPICAL REPAIR FOR FULL DEPTH (BARRIER WALL)
- 9 TYPICAL REPAIR FOR HALF DEPTH (BARRIER WALL)
- A 10 TYPICAL BRIDGE PARAPET REPAIR DETAILS
- 11-12 REPAIR DETAILS (LOCATION 1)

- 13 REPAIR DETAILS (LOCATION 2)
- 14 REPAIR DETAILS (LOCATION 3)
- 15 REPAIR DETAILS (LOCATION 4, SN 016-W432, RET. WALL)
- 16 REPAIR DETAILS (LOCATION 5)
- 17 REPAIR DETAILS (LOCATION 6)
- 18 REPAIR DETAILS (LOCATION 7)
- 19 REPAIR DETAILS (LOCATION 8)
- 20 LOCATION 9 THRU 12 MAP
- 21 REPAIR DETAILS (LOCATION 9)
- 22 REPAIR DETAILS (LOCATION 10-11)
- 23 REPAIR DETAILS (LOCATION 12)
- 24 REPAIR DETAILS (LOCATION 13)
- 25 REPAIR DETAILS (LOCATION 14, SN 016-0076)
- 26 REPAIR DETAILS (LOCATION 15)

- 27 REPAIR DETAILS (LOCATION 16, SN 016-0003)
- 28 REPAIR DETAILS (LOCATION 17, SN 016-1084)
- 29 REPAIR DETAILS (LOCATION 18, SN 099-0069)
- 30 REPAIR DETAILS (LOCATION 19, SN 016-1098)
- A 30A REPAIR DETAILS (LOCATION 20)
- 31 TRAFFIC CONTROL & PROTECTION FOR SIDE ROADS, INTERSECTION AND DRIVEWAYS (TC-10)
- 32 TRAFFIC CONTROL & PROTECTION OF TURN BAYS (TO REMAIN OPEN TO TRAFFIC) (TC-14)
- 33 TRAFFIC CONTROL DETAILS FOR FREEWAY SHOULDER CLOSURES AND PARTIAL RAMP CLOSURES (TC-17)
- 34 ARTERIAL ROAD INFORMATION SIGN (TC-22)
- 34A, 34B. TRAFFIC DETAILS
- 34C TC-25

ILLINOIS DEPARTMENT OF TRANSPORTATION

INDEX OF SHEETS

A Rev. 6-2-11 Rev.

ROUTE	SECTION	COUNTY	TOTAL SHEETS	SHEET NUMBER
VARIOUS	2010-069-1	VARIOUS	34	3

Contract 60L54

STATE STANDARDS

<u>STD NO</u>	<u>DESCRIPTION</u>
637001-04	CONCRETE BARRIER 32" HEIGHT
637006-02	CONCRETE BARRIER 42" HEIGHT
701101-02	OFF-ROAD OPERATIONS, MULTILANE, 15' TO 24" FROM PAVEMENT EDGE
701400-05	APPROACH TO LANE CLOSURE, FREEWAY/EXPRESSWAY
701401-06	LANE CLOSURE, FREEWAY/EXPRESSWAY
701411-07	LANE CLOSURE, MULTILANE, AT ENTRANCE OR EXIT RAMP, FOR SPEEDS \geq 45 MPH
701601-07	URBAN LANE CLOSURE, MULTILANE, 1W OR 2W WITH NONTRAVERSABLE MEDIAN
701901-01	TRAFFIC CONTROL DEVICES

701446-02

442101-07
 701301-04



ILLINOIS DEPARTMENT OF TRANSPORTATION
 STATE STANDARDS

△ Rev. 6-2-11

ROUTE	SECTION	COUNTY	TOTAL SHEETS	SHEET NUMBER
VARIOUS	2010-069-I	VARIOUS	34	4

Contract 60L54

GENERAL NOTES

BEFORE STARTING ANY EXCAVATION, THE CONTRACTOR SHALL CALL "J.U.L.I.E." AT (800) 892-0123 OR 811. FOR FIELD LOCATIONS OF BURIED ELECTRIC, TELEPHONE AND GAS UTILITIES. 48 HOURS NOTIFICATION IS REQUIRED.

BEFORE STARTING ANY EXCAVATION, THE CONTRACTOR SHALL CALL "C.U.A.N." (CHICAGO UTILITY ALERT NETWORK) AT (312) 744-7000 FOR FIELD LOCATIONS OF BURIED ELECTRIC, TELEPHONE AND GAS UTILITIES. 48 HOURS NOTIFICATION IS REQUIRED.

IT SHALL BE THE CONTRACTOR'S RESPONSIBILITY TO VERIFY ALL DIMENSIONS & CONDITIONS EXISTING IN THE FIELD PRIOR TO CONSTRUCTION & ORDERING OF MATERIALS.

THE CONTRACTOR WILL NOT BE ALLOWED TO SET UP A YARD OR FIELD OFFICE ON STATE PROPERTY WITHOUT WRITTEN PERMISSION FROM THE DEPARTMENT.

THE CONTRACTOR SHALL CONTACT THE DISTRICT ONE TRAFFIC CONTROL SUPERVISOR AT (847) 705-4470 FOR ARTERIALS OR (847)705-4151 FOR EXPRESSWAYS. A MINIMUM OF 72 HOURS IN ADVANCE OF BEGINNING WORK.

THE CONTRACTOR SHALL COORDINATE CONSTRUCTION ACTIVITIES WITH UTILITY COMPANIES.

THESE PLANS HAVE BEEN PREPARED FROM FIELD NOTES RECEIVED FROM MAINTENANCE ENGINEERS.

ALL WORK ASSOCIATED WITH THE REMOVAL AND REPLACEMENT OF THE BARRIER WALL IS INCIDENTAL TO THE PAY ITEM CONCRETE BARRIER WALL REMOVAL AND REPLACEMENT.

THE "ARTERIAL ROAD INFORMATION SIGN (TC-22)" IS APPLICABLE ONLY TO ARTERIAL ROADS AND SHALL NOT BE APPLIED TO EXPRESSWAYS.

THE CONTRACTOR SHALL BE REQUIRED TO PROVIDE ACCESS TO ABUTTING PROPERTY AT ALL TIMES DURING THE CONSTRUCTION OF THIS PROJECT.

DO NOT SCALE PLANS FOR CONSTRUCTION DIMENSIONS.

IN SOME CASES, THERE IS A CONDUIT IN THE BASE OF THE BARRIER WALL AND BRIDGE PARAPET. THIS CONDUIT CONTAINS ELECTRICAL AND/OR FIBER OPTIC CABLE. CARE MUST BE TAKEN TO PREVENT DAMAGE TO THIS CONDUIT. IF IT IS DAMAGED, THEN THE CONDUIT WILL NEED TO BE REPAIRED. IF THE ELECTRICAL OR FIBER OPTIC CABLE IS DAMAGED, IT WILL HAVE TO BE REPLACED FROM JUNCTION BOX TO JUNCTION BOX (1500 FT. MIN.). FOR THE LOCATION OF THE CONDUITS, CONTACT ROY LAWSON AT THE TRAFFIC SYSTEMS CENTER AT (708) 524-2145.

WHEN EDGE OF BARRIER IS WITHIN 3' OF THE TRAFFIC LANE EDGE, REDUCE LANE TO 11' LANE WITH TYPE III TEMPORARY TAPE AND TAPER IN 45:1 .

GENERAL NOTES (BRIDGE)

THE CONTRACTOR SHALL TAKE NECESSARY PRECAUTIONS TO INSURE THAT NO DEBRIS WILL ENDANGER OR INTERFERE WITH TRAFFIC ON THE ROADWAY BENEATH THE BRIDGE ACCORDING TO ARTICLE 107.09 OF THE STANDARD SPECIFICATIONS. THIS WORK WILL NOT BE PAID FOR SEPERATELY, BUT SHALL BE INCLUDED IN THE CONTRACT UNIT PRICE FOR THE APPROPRIATE PAYITEM INVOLVED AND NO ADDITIONAL COMPENSATION WILL BE ALLOWED.

EXISTING REINFORCEMENT BARS EXTENDING INTO THE REMOVAL AREA SHALL BE CLEANED, STRAIGHTENED AND INCORPORATED INTO THE NEW CONSTRUCTION. ANY REINFORCEMENT BARS THAT ARE DAMAGED DURING CONCRETE REMOVAL SHALL BE REPLACED WITH AN APPROVED BAR SPLICER OR ANCHORAGE SYSTEM. COST INCLUDED WITH CONCRETE REMOVAL.

PLAN DIMENTIONS AND DETAILS RELATIVE TO EXISTING PLANS ARE SUBJECT TO ROUTINE VARIATIONS. THE CONTRACTOR SHALL FIELD VERIFY EXISTING DIMENTIONS AND DETAILS AFFECTING NEW CONSTRUCTION AND MAKE NECESSARY APPROVED ADJUSTMENT PRIOR TO CONSTRUCTION OR ORDERING OF MATERIALS. SUCH VARIATIONS SHALL NOT BE CAUSE FOR ADDITIONAL COMPENSATION FOR A CHANGE IN SCOPE OF THE WORK, HOWEVER, THE CONTRACTOR WILL BE PAID FOR THE QUANTITY ACTUALLY FURNISHED BASED UPON THE UNIT PRICE BID FOR THE WORK.

REINFORCEMENT BARS SHALL CONFORM TO THE REQUIREMENT OF ASTM A 706 Gr 60 (IL MODIFIED). SEE SPECIAL PROVISIONS.

REINFORCEMENT BARS DESIGNATED (E) SHALL BE EPOXY COATED.

JOINTS ARE TO BE INSTALLED TO MATCH EXISTING.

IF A GAP IN THE PARAPET IS TO OCCUR FOR ANY PERIOD OF TIME, A TEMPORARY RAILING MUST BE INSTALLED SO THAT AT NO TIME SHALL THERE BE AN OPENING IN ANY PORTION OF THE EXISTING SYSTEM. IF THE GAP IS IN A BARRIER WALL SECTION, TEMPORARY RAILING OR BARRELS SHALL BE USED AT THE DISCRETION OF THE ENGINEER.


THE CONTRACTOR SHALL SALVAGE AND RETURN THE EXISTING GUARDRAIL TO:


DISTRICT BRIDGE OFFICE
1101 BIESTERFIELD RD.
ELK GROVE VILLAGE, IL 60007

THIS WORK SHALL INCLUDE REMOVING, TRANSPORTING AND UNLOADING THE EXISTING CARRIER GUARDRAIL TO THE ABOVE YARD WHICH COST IS INCLUDED IN THE COST OF "CONCRETE BARRIER WALL REMOVAL AND REPLACE, LOCATION (NUMBER)".

ILLINOIS DEPARTMENT OF TRANSPORTATION

GENERAL NOTES

SHEET 1 OF 2 

Rev. 6-2-11  *Rev.*

ROUTE	SECTION	COUNTY	TOTAL SHEETS	SHEET NUMBER
VARIOUS	2010-069-I	VARIOUS	34	4A

Contract 60L54

GENERAL NOTES

ANY CONDUIT RUSTED THRU, EXPOSED CABLES, PULL BOXES OR HANDHOLES FOR BRIDGE LIGHTING, TRAFFIC SIGNALS, COUNTERS, SURVEILLANCE EQUIPMENT FOUND IN DISREPAIR THE ENGINEER SHALL TAKE THE APPROPRIATE ACTION:

NO SAW CUTTING OR REMOVAL WILL BE MADE OR CONCRETE POURED UNTIL THE APPROPRIATE ACTION IS TAKEN TO RESOLVE EACH ISSUE;

ALL WORK REQUIRED TO REPAIR/REPLACE SIGNAL OR LIGHTING ITEMS WILL BE DOCUMENTED BY THE ENGINEER AND THE BUREAU OF TRAFFIC WILL BE NOTIFIED.

CONTACT JEFF GALAS AT TRAFFIC SYSTEMS CENTER TO ASCERTAIN IF THEY HAVE EQUIPMENT IN THE NEAR VICINITY OF THE LOCATION SHOWN.

 Added sheet 5/27-2011 ARP

SHEET 2 OF 2

ILLINOIS DEPARTMENT OF TRANSPORTATION

GENERAL NOTES

ROUTE	SECTION	COUNTY	TOTAL SHEETS	SHEET NUMBER
VARIOUS	2010-069-1	VARIOUS	34	5

Contract 60L54

SUMMARY OF QUANTITIES						
Code No	Description	Unit	Total Quantities	CONSTRUCTION TYPE CODE 0040		
				COOK CO.	WILL CO.	
42001300	PROTECTIVE COAT	SQ YD	155	138	17	
44200990	CLASS B PATCHES, TYPE I, 12 INCH	SQ YD	3.6	3.6		
67000400	ENGINEER'S FIELD OFFICE, TYPE A	CAL MO	3	1.5	1.5	
67100100	MOBILIZATION	L SUM	1	0.5	0.5	
70102630	TRAFFIC CONTROL AND PROTECTION, STANDARD 701601	L SUM	1		1	
X0323723	CONCRETE BARRIER WALL REMOVAL AND REPLACEMENT, LOCATION 1	L SUM	1	1		
X0323724	CONCRETE BARRIER WALL REMOVAL AND REPLACEMENT, LOCATION 2	L SUM	1	1		
X0323725	CONCRETE BARRIER WALL REMOVAL AND REPLACEMENT, LOCATION 3	L SUM	1	1		
X0323726	CONCRETE BARRIER WALL REMOVAL AND REPLACEMENT, LOCATION 4	L SUM	1	1		
X0323727	CONCRETE BARRIER WALL REMOVAL AND REPLACEMENT, LOCATION 5	L SUM	1	1		
X0323728	CONCRETE BARRIER WALL REMOVAL AND REPLACEMENT, LOCATION 6	L SUM	1	1		
X0323729	CONCRETE BARRIER WALL REMOVAL AND REPLACEMENT, LOCATION 7	L SUM	1	1		
X0323730	CONCRETE BARRIER WALL REMOVAL AND REPLACEMENT, LOCATION 8	L SUM	1	1		
X0323731	CONCRETE BARRIER WALL REMOVAL AND REPLACEMENT, LOCATION 9	L SUM	1	1		
70300530	PAVEMENT MARKING TAPE, TYPE III, 5 INCH	FOOT	500	500		
70301000	WORK ZONE PAVEMENT MARKING REMOVAL	SQ FT	210	210		
X7011015	TRAFFIC CONTROL AND PROTECTION (EXPRESSWAYS)	L SUM	1	1		

ILLINOIS DEPARTMENT OF TRANSPORTATION
SUMMARY OF QUANTITIES
Rev.

SHEET 1 OF 2

Rev. 6-2-11

ROUTE	36	SECTION		COUNTY		TOTAL SHEETS		SHEET NUMBER	
VARIOUS		2010-069-1		VARIOUS		34		6	

Contract 60L54

SUMMARY OF QUANTITIES

Code No	Description	Unit	Total Quantities	CONSTRUCTION TYPE CODE 0040		
				COOK CO.	WILL CO.	
X0323732	CONCRETE BARRIER WALL REMOVAL AND REPLACEMENT, LOCATION 10	L SUM	1	1		
X0323733	CONCRETE BARRIER WALL REMOVAL AND REPLACEMENT, LOCATION 11	L SUM	1	1		
X0323734	CONCRETE BARRIER WALL REMOVAL AND REPLACEMENT, LOCATION 12	L SUM	1	1		
X0323735	CONCRETE BARRIER WALL REMOVAL AND REPLACEMENT, LOCATION 13	L SUM	1	1		
X0323736	CONCRETE BARRIER WALL REMOVAL AND REPLACEMENT, LOCATION 14	L SUM	1	1		
X0323737	CONCRETE BARRIER WALL REMOVAL AND REPLACEMENT, LOCATION 15	L SUM	1	1		
X0323738	CONCRETE BARRIER WALL REMOVAL AND REPLACEMENT, LOCATION 16	L SUM	1	1		
X0323739	CONCRETE BARRIER WALL REMOVAL AND REPLACEMENT, LOCATION 17	L SUM	1	1		
X0323740	CONCRETE BARRIER WALL REMOVAL AND REPLACEMENT, LOCATION 18	L SUM	1		1	
X0323741	CONCRETE BARRIER WALL REMOVAL AND REPLACEMENT, LOCATION 19	L SUM	1		1	
Z0026346	NIGHTTIME WORK ZONE LIGHTING	L SUM	1	0.5	0.5	
Z0030850	TEMPORARY INFORMATION SIGNING	SQ FT	154.2	51.4	102.8	1
Z0048665	RAILROAD PROTECTIVE LIABILITY INSURANCE	L SUM	1	0.5	0.5	
44201007	CLASS B PATCH, TYPE II, 13 INCH	SQ YD	8	8		
44201299	DOWEL BARS, 1 1/2"	EACH	24	24		
44213200	SAW CUTS	FOOT	60	60		
60406100	FRAMES AND LIDS, TYPE I, CLOSED LID	EACH	1	1		

ILLINOIS DEPARTMENT OF TRANSPORTATION

SUMMARY OF QUANTITIES

SHEET 2 OF 2

Rev. 6-2-11

Rev.

ROUTE	SECTION	COUNTY	TOTAL SHEETS	SHEET NUMBER
VARIOUS	2010-069-I	VARIOUS	34	7

Contract: 60L54

Code No.	Location	COOK COUNTY																	WILL	
		I-90 / 94														I-80	I-55	I-80 Over US 30 & RR	Vollmer Rd Over I-57	
		1	2	3	4	5	6	7	8	9	10	11	12	13	14	15	16	17	18	19
70102630	TRAFFIC CONTROL AND PROTECTION, STANDARD 701601														X				X	X
X7011015	TRAFFIC CONTROL AND PROTECTION (EXPRESSWAYS)	X	X	X	X	X	X	X	X	X	X	X	X	X	X	X	X	X	X	X
X0322256	TEMPORARY INFORMATION SIGNING (SQ. FT)														51.4				51.4	51.4
X0325702	NIGHTTIME WORK ZONE LIGHTING	X	X	X	X	X	X	X	X	X	X	X	X	X	X	X	X	X	X	X

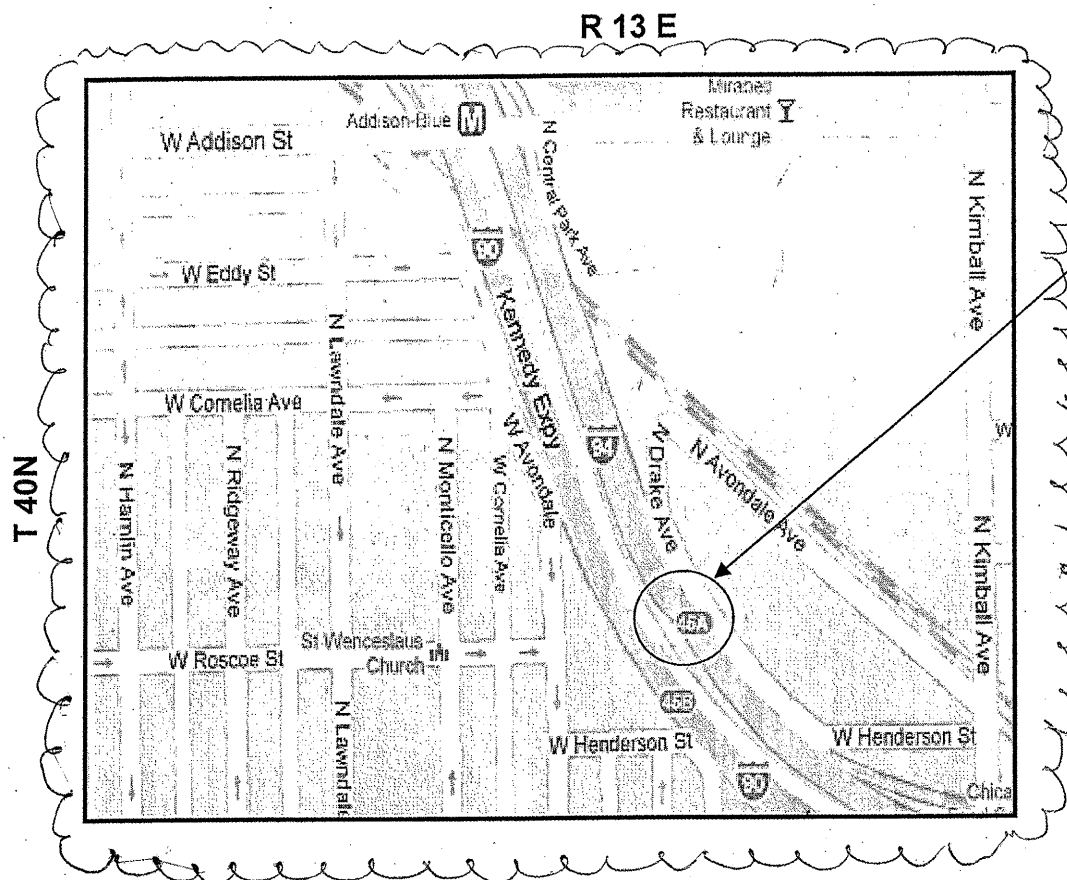


ILLINOIS DEPARTMENT OF TRANSPORTATION
SCHEDULE OF QUANTITIES

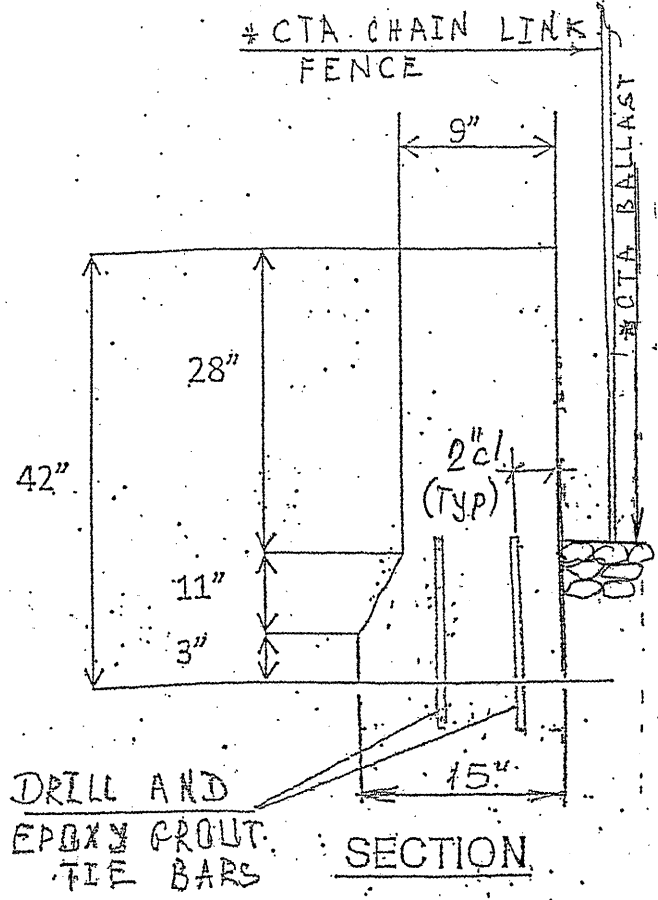
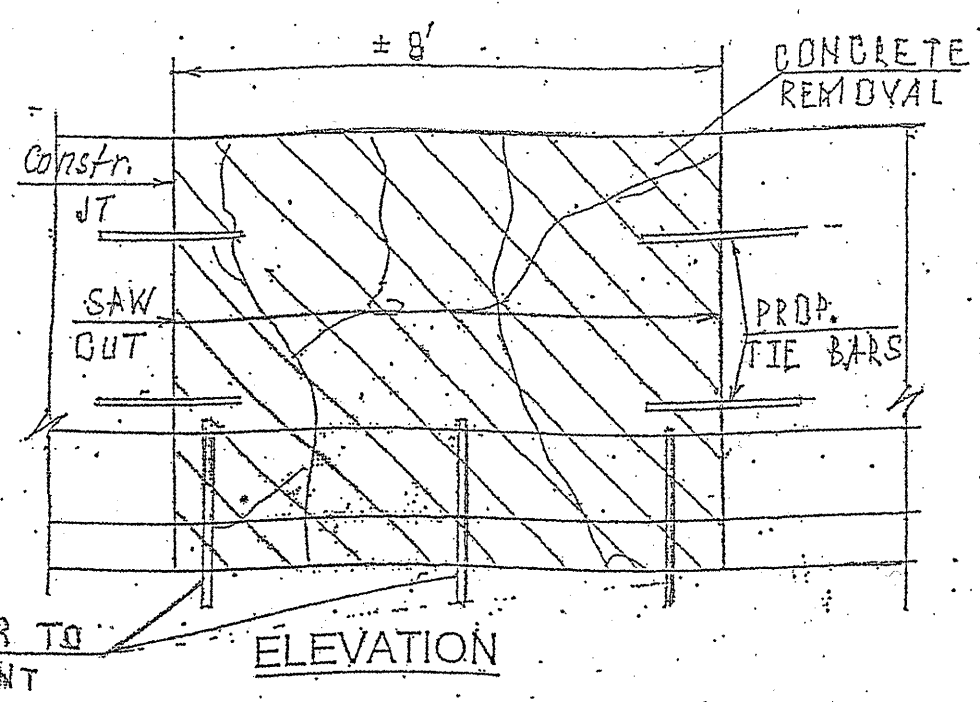
△ Revised 5/27-2011 ARP

ROUTE	SECTION	COUNTY	TOTAL SHEETS	SHEET NUMBER
VARIOUS	2010-069-1	VARIOUS	34	17

Contract 60L54

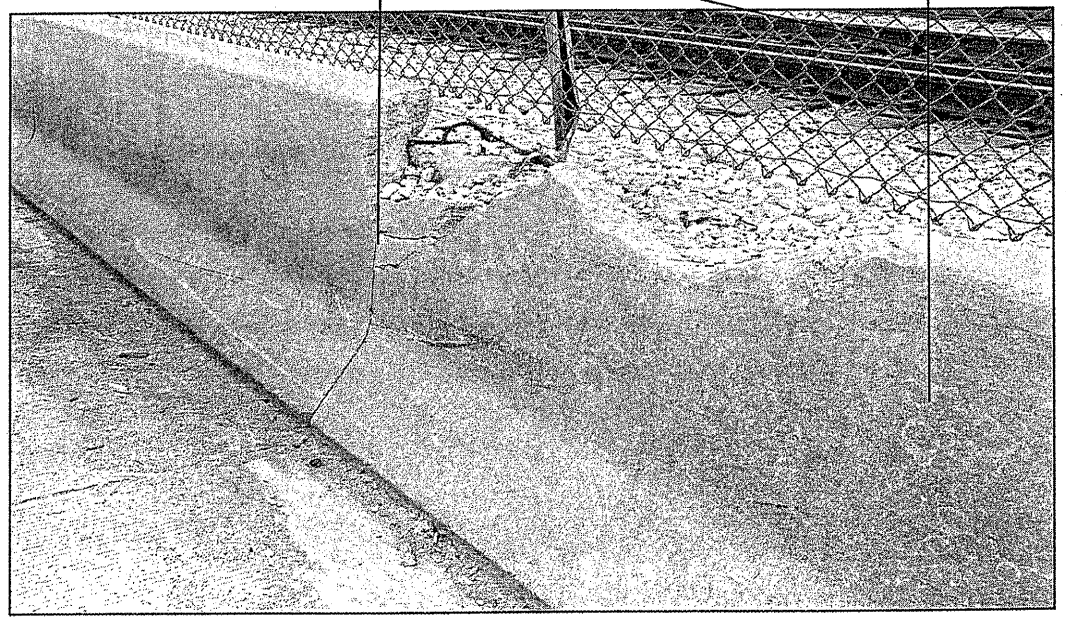


LOCATION 6: I-90 (KENNEDY EXPY)
 OUTBOUND, SOUTH OF ADDISON ST, AT
 EXIT 45A, LEFT SIDE, BY CTA TRACKS



*DO NOT DISTURB

CITY OF CHICAGO
 WEST TOWNSHIP
 COOK COUNTY



FULL DEPTH BARRIER REPAIR
 FOR MORE DETAILS SEE SHEET # 8

CONCRETE REMOVAL (CU YD)	1.0
CONCRETE STRUCTURE (CU YD)	1.0
FOR INFORMATION ONLY	

TRAFFIC DATA:
 I-90: SPEED LIMIT = 55 MPH
 2008 ADT = 300200

ILLINOIS DEPARTMENT OF TRANSPORTATION
 LOCATION: 6
 I-90 (KENNEDY EXPRESSWAY)

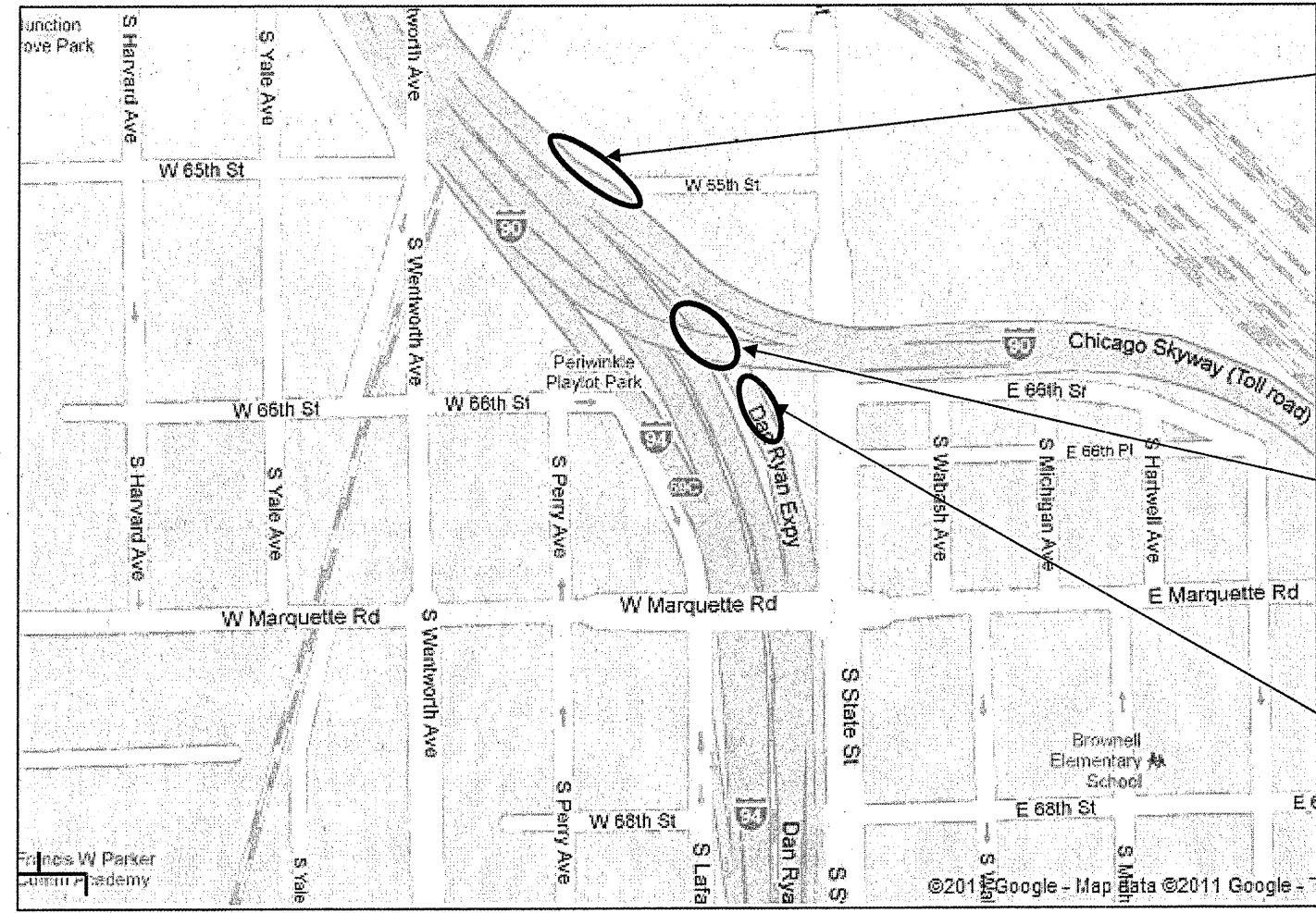
1 Revised 05/26-2011 f.g.

ROUTE	SECTION	COUNTY	TOTAL SHEETS	SHEET NUMBER
VARIOUS	2010-069-I	VARIOUS	34	20

Contract 60L54

R 14 E

T 38 N



LOCATION 10 & 11
 I-94 (DAN RYAN) BARRIER WALL NB (INBOUND) IN THE LOCAL LANES, RIGHT SIDE @ 65th ST AND LOC 10 IS 220 FT FROM LOCATION 9 @ 66th ST -14' FULL DEPTH REPAIR.
 LOC. 11 IS 30 FT BEYOND LOC. 10 - 12'-7" FULL DEPTH REPAIR.

LOCATION 12:
 I-94 (DAN RYAN) BARRIER WALL NB (INBOUND) IN THE LOCAL LANES, LEFT SIDE. RIGHT UNDER THE OUTBOUND SKYWAY EXPRESS FLYOVER RAMP @ 66th ST - 10 FT. FULL DEPTH REPAIR.

LOCATION 9:
 I-94 (DAN RYAN) BARRIER WALL NB(INBOUND) IN THE LOCAL LANES, RIGHT SIDE @ 66th ST, NORTH OF 67th ST. EXIT RAMP.
 FULL DEPTH REPAIR. TWO PLACES WITHIN 1/10th OF A MILE APART: 14 FT AND 17.5 FT

CITY OF CHICAGO
 LAKE TOWNSHIP
 COOK COUNTY

FOR DETAILS SEE SHTS # 21 thru 23

TRAFFIC DATA

I-90/94 SPEED LIMIT = 55 MPH
 2008 ADT = 231700

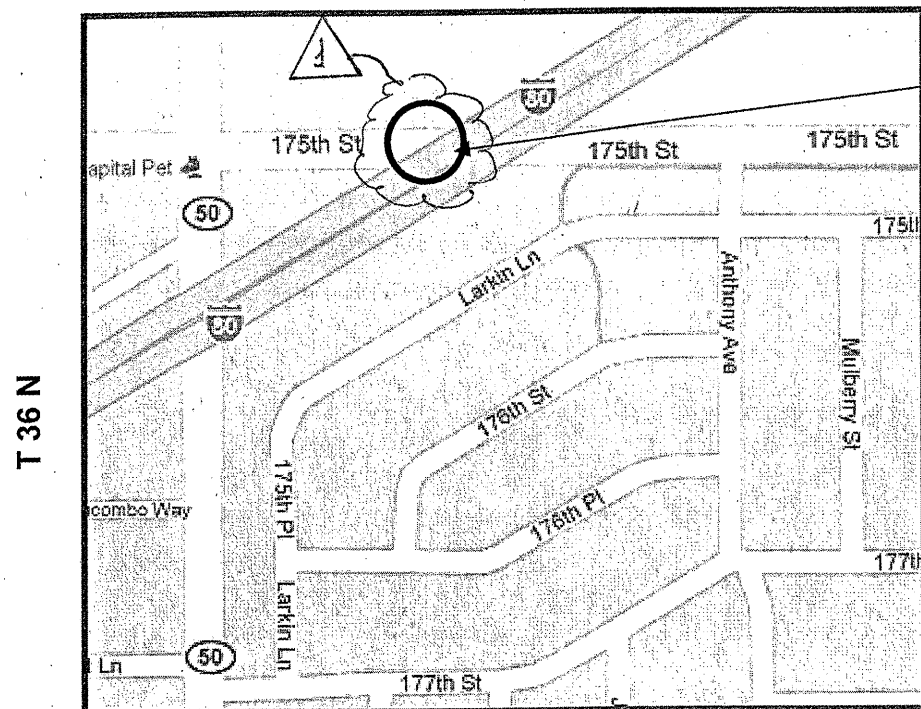
ILLINOIS DEPARTMENT OF TRANSPORTATION
 MAP FOR LOCATIONS # 9; 10;
 11,12,
 I-94 AT 65th and 66th STREETS

1 Revised 05/26-2011 B.G.

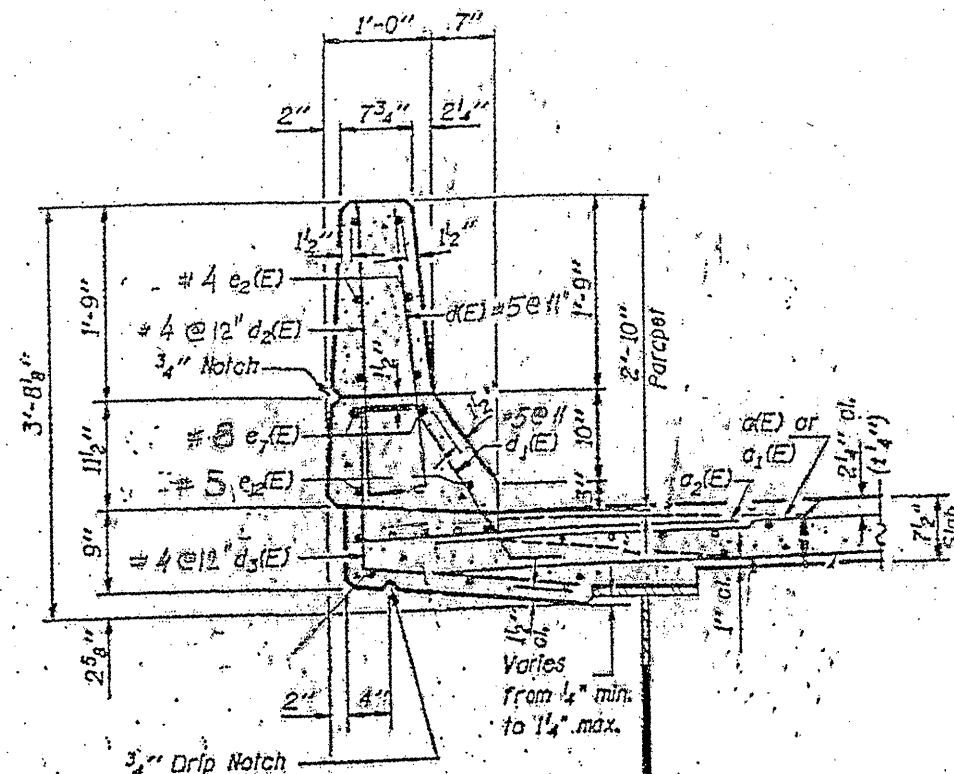
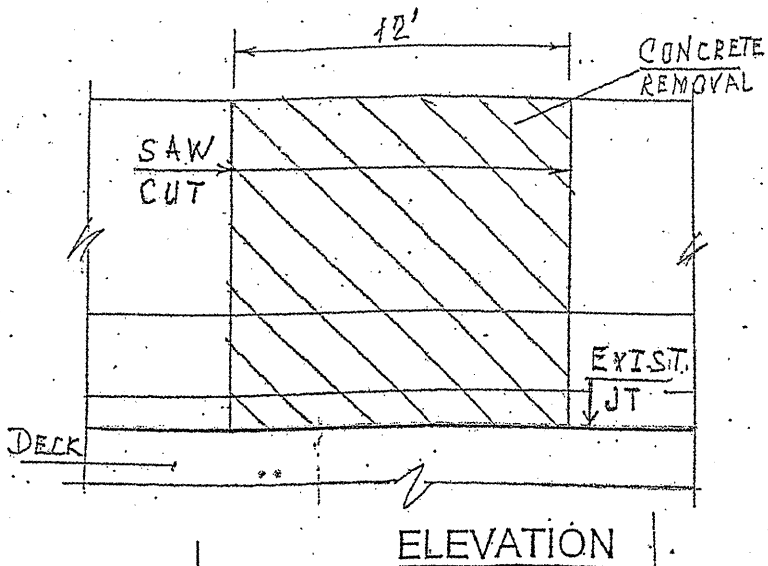
ROUTE	SECTION	COUNTY	TOTAL SHEETS	SHEET NUMBER
VARIOUS	2010-069-I	VARIOUS	34	25

Contract 60L54

R 13 E

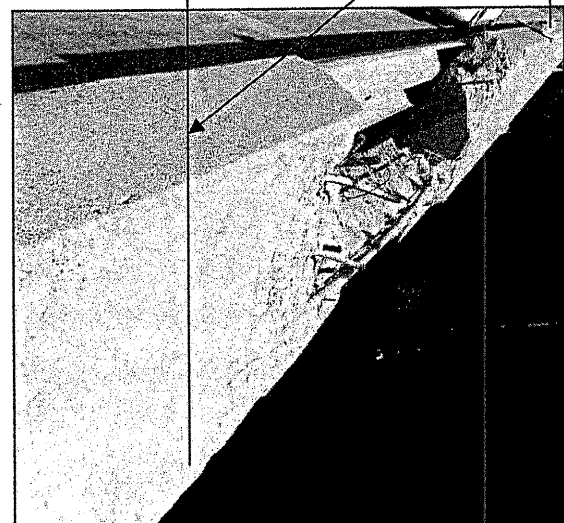
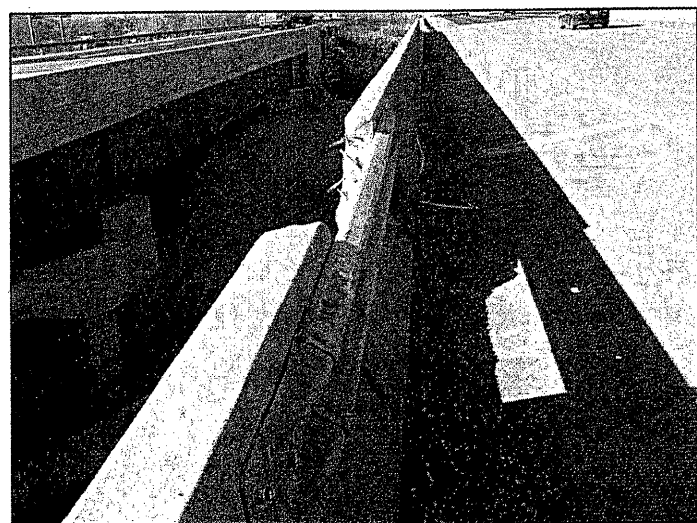


LOCATION 14: I-80 WB OVER 175th ST, EAST OF I-57 EXIT, ON SN 016-0076, LEFT SIDE.



SECTION THRU PARAPET

CITY OF COUNTRY CLUB HILLS
BREMEN TOWNSHIP
COOK COUNTY



PARAPET REPAIR

BRIDGE PARAPET REPAIR
FOR MORE DETAILS SEE SHEET #10

BAR	NO	SIZE	LENGTH	SHAPE
e ₂ (E)	6	4	11'-10"	—
e ₁₂ (E)	2	5	11'-10"	—
e ₇ (E)	2	8	11'-10"	—
d(E)	14	5	3'-0	┌
d ₂ (E)	13	4	3'-0	┌
REINFORCEMENT BARS, EPOXY COATED			LBS	205
CONCRETE SUPERSTRUCTURE			CU. YDS	1.4
CONCRETE REMOVAL			CU. YDS	1.4
MECHANICAL SPLICE			EACH	20

FOR INFORMATION ONLY

BAR "d" & "d2"

TRAFFIC DATA:

I-80 SPEED LIMIT = 55 MPH

2008 ADT = 98900

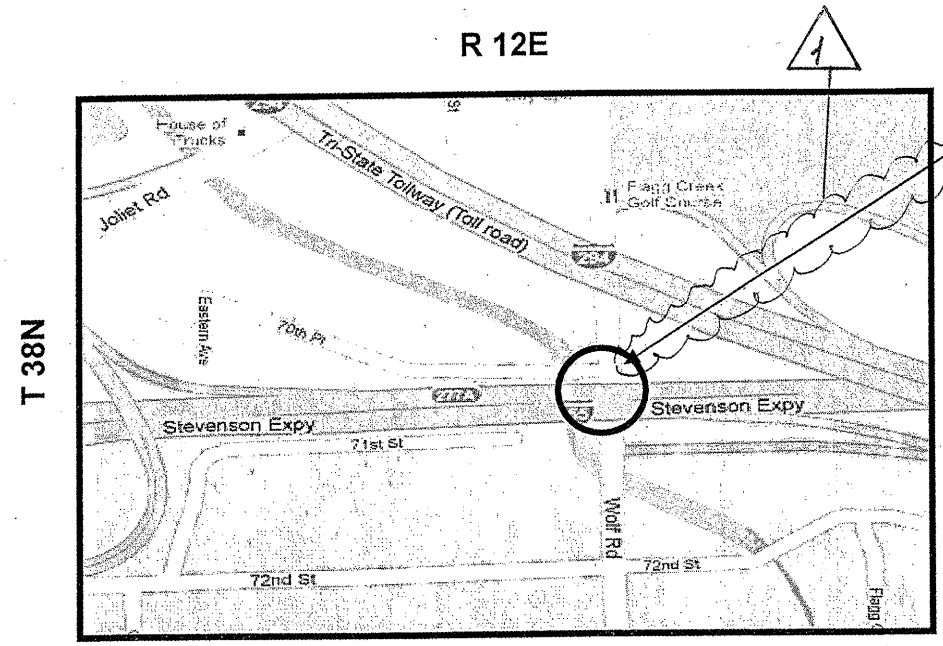
ILLINOIS DEPARTMENT OF TRANSPORTATION

LOCATION: 14
I-80 WB
OVER 175th STREET

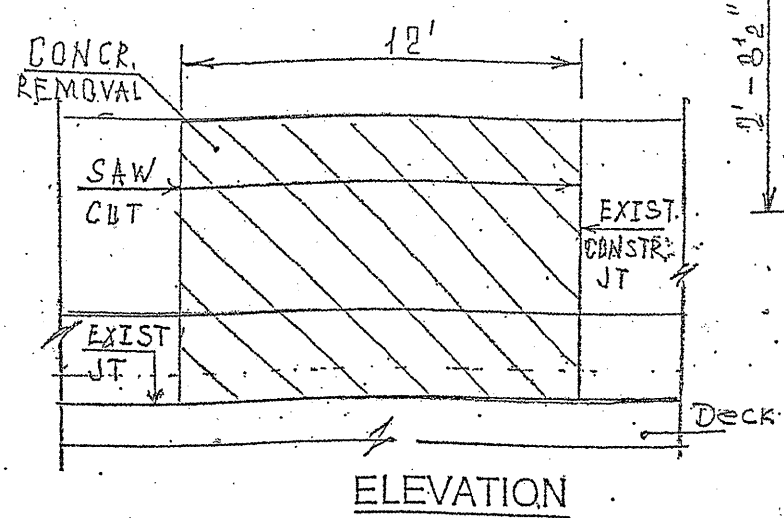
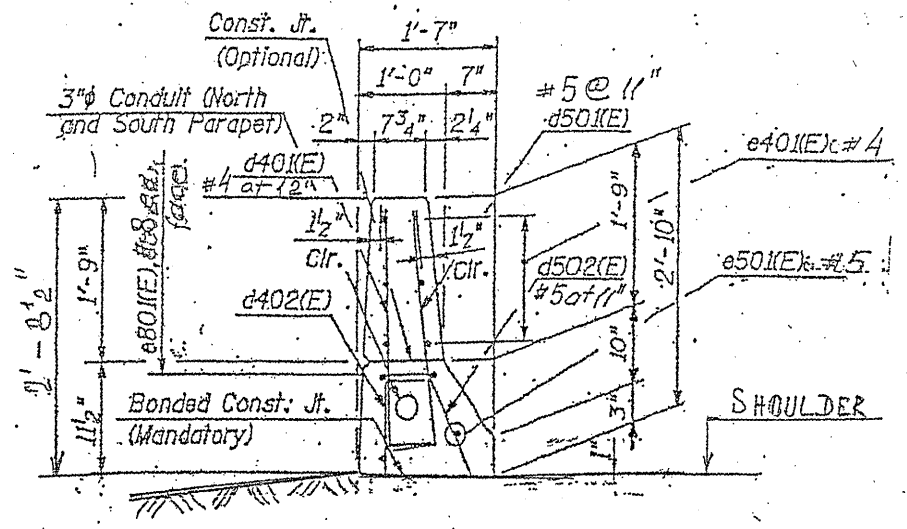
1 Revised 05/26-2011 J.B.G.

ROUTE VARIOUS	SECTION 2010-069-1	COUNTY VARIOUS	TOTAL SHEETS 34	SHEET NUMBER 27
------------------	-----------------------	-------------------	--------------------	--------------------

Contract 60L54



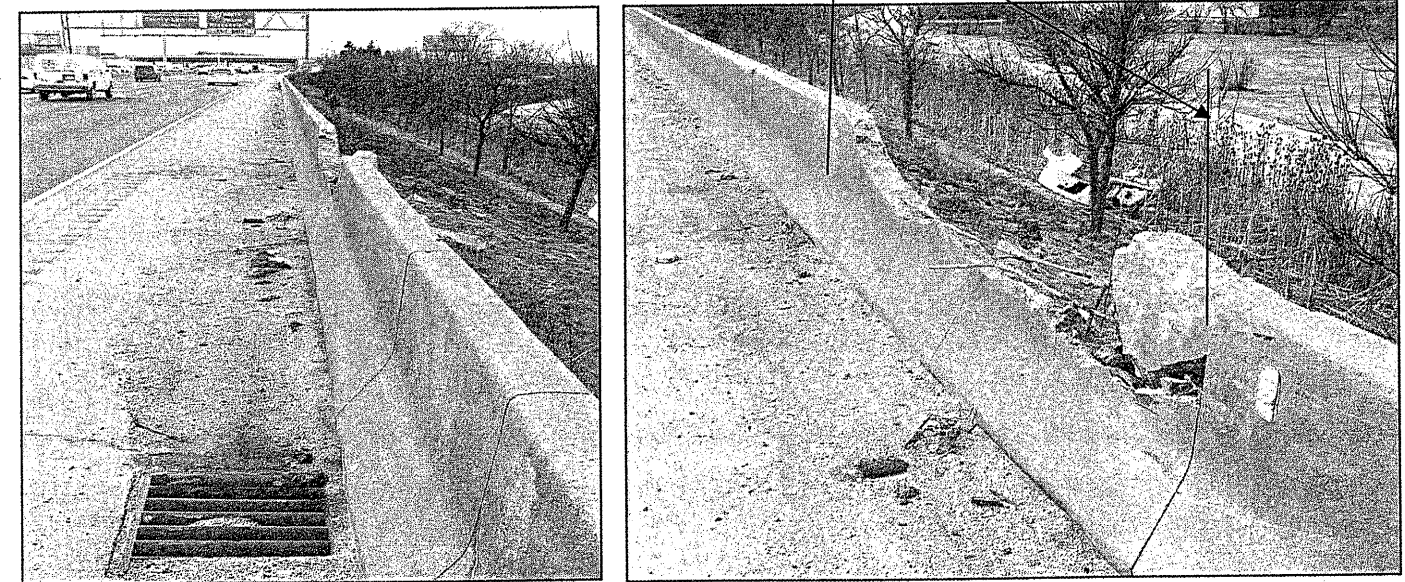
LOCATION 16:
W OF I-55 (STEVENSON) SB OVER WOLF RD (SN 016-0003), BY LIGHT POLE #3-SICDK. LEFT SIDE, EAST OF MILE MARKER 277 BY ENTRANCE TO 294 NB TOLLWAY ON RAMP.



BRIDGE PARAPET REPAIR
FOR MORE DETAILS SEE SHEET # 10

BAR	NO	SIZE	LENGTH	SHAPE
e401(E)	6	4	11'-10"	—
e502(E)	2	5	11'-10"	—
e801(E)	2	8	11'-10"	—
d501(E)	14	5	3'-0"	—
d401(E)	13	4	3'-0"	—
REINFORCEMENT BARS, EPOXY COATED			LBS	205
CONCRETE SUPERSTRUCTURE			CU. YDS	1.3
CONCRETE REMOVAL			CU. YDS	1.3
MECHANICAL SPLICE			EACH	20

FOR INFORMATION ONLY



PARAPET REPAIR

TRAFFIC DATA:
I-55 SPEED LIMIT = 55 MPH
2009 ADT = 323400

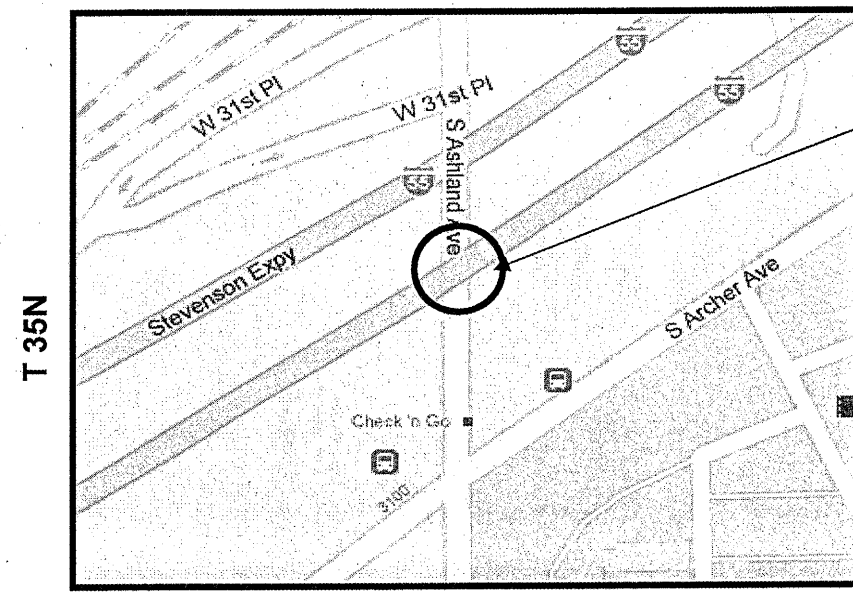
ILLINOIS DEPARTMENT OF TRANSPORTATION
LOCATION: 16
I-55 SB OVER WOLF RD

Revised 05/26-2011 J.B.G.

ROUTE VARIOUS	SECTION 2010-069-1	COUNTY VARIOUS	TOTAL SHEETS 34	SHEET NUMBER 28
------------------	-----------------------	-------------------	--------------------	--------------------

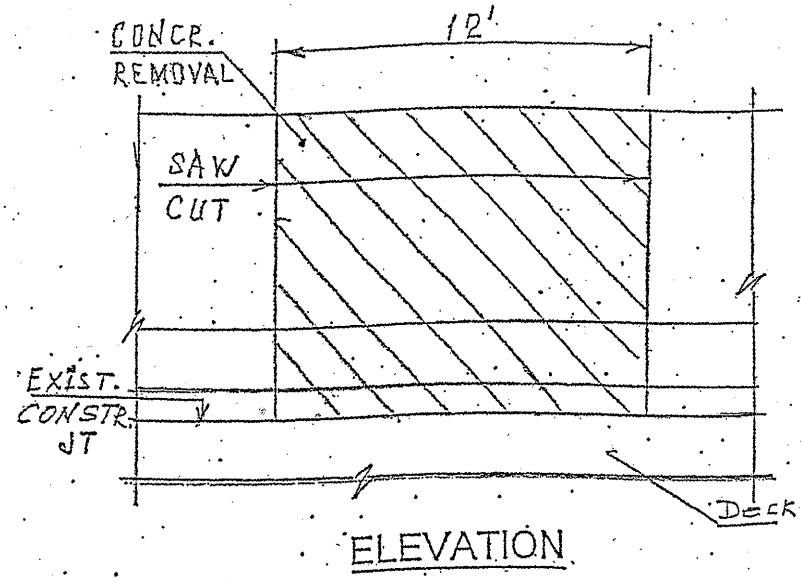
Contract 60L54

R 11E

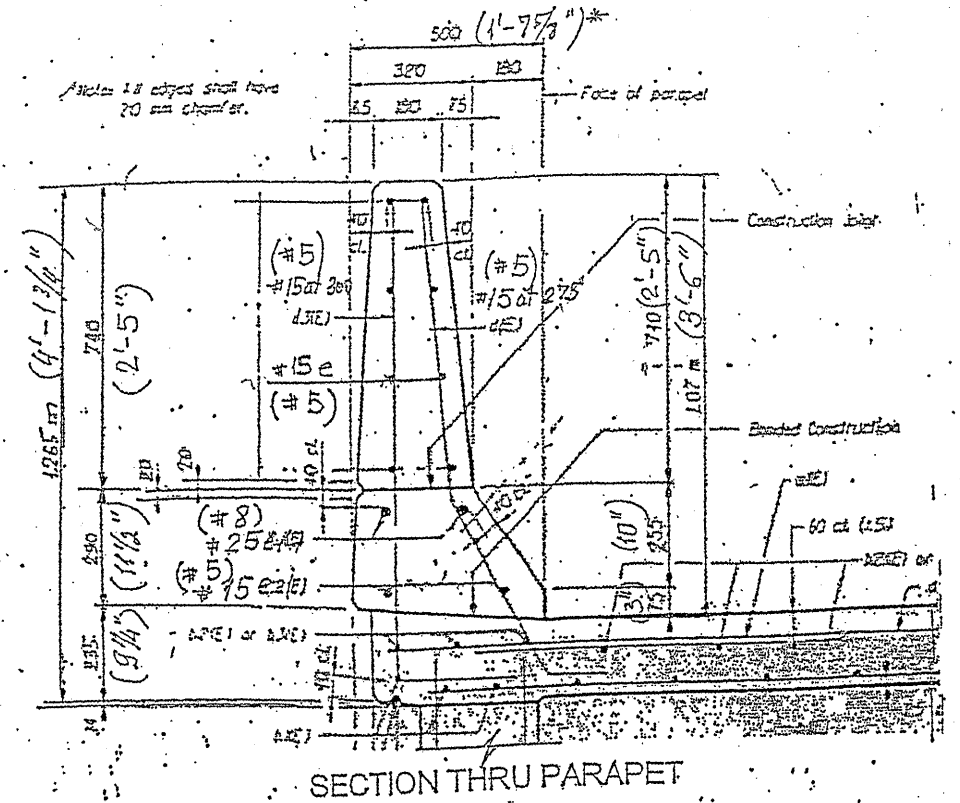


CHICAGO
SOUTH TOWNSHIP
COOK COUNTY

LOCATION 17:
I-55 NB OVER ASHLAND AVE (SN 016-1084)
REMOVE & REPLACE 12' SECTION OF THE
NORTH PARAPET (LEFT SIDE)

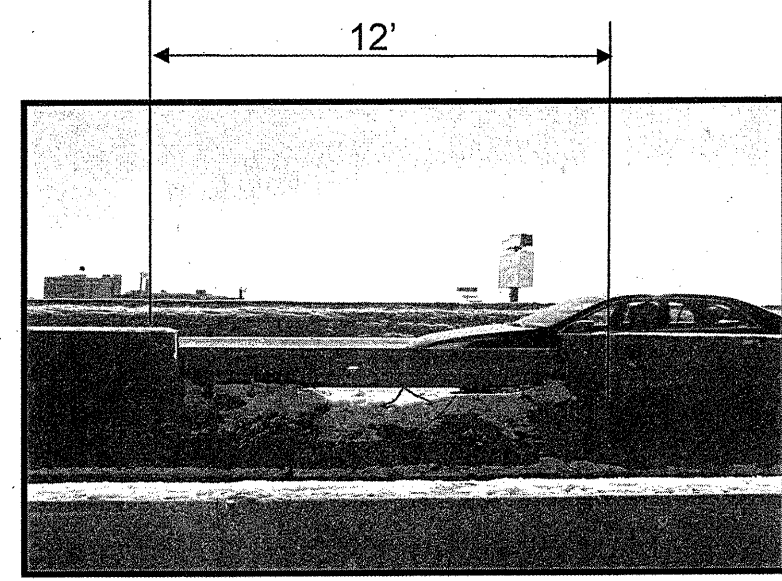


ELEVATION



SECTION THRU PARAPET

* IN PARENTHESIS ARE SHOWN ENGLISH DIMENSIONS AND BAR DIAMETERS.



PARAPET REPAIR

BRIDGE PARAPET REPAIR

FOR MORE DETAILS SEE SHEET # 10

BAR	NO	SIZE	LENGTH	SHAPE
e(E)	8	5	11'-10"	—
e1(E)	2	8	11'-10"	—
e2(E)	2	5	11'-10"	—
d(E)	14	5	3'-0"	—
d3(E)	13	5	3'-0"	—
REINFORCEMENT BARS, EPOXY COATED			LBS	274
CONCRETE SUPERSTRUCTURE			CU. YDS	1.5
CONCRETE REMOVAL			CU. YDS	1.5
MECHANICAL SPLICE			EACH	24
FOR INFORMATION ONLY				

TRAFFIC DATA:
I-55 SPEED LIMIT = 55 MPH
2010 ADT = 84550

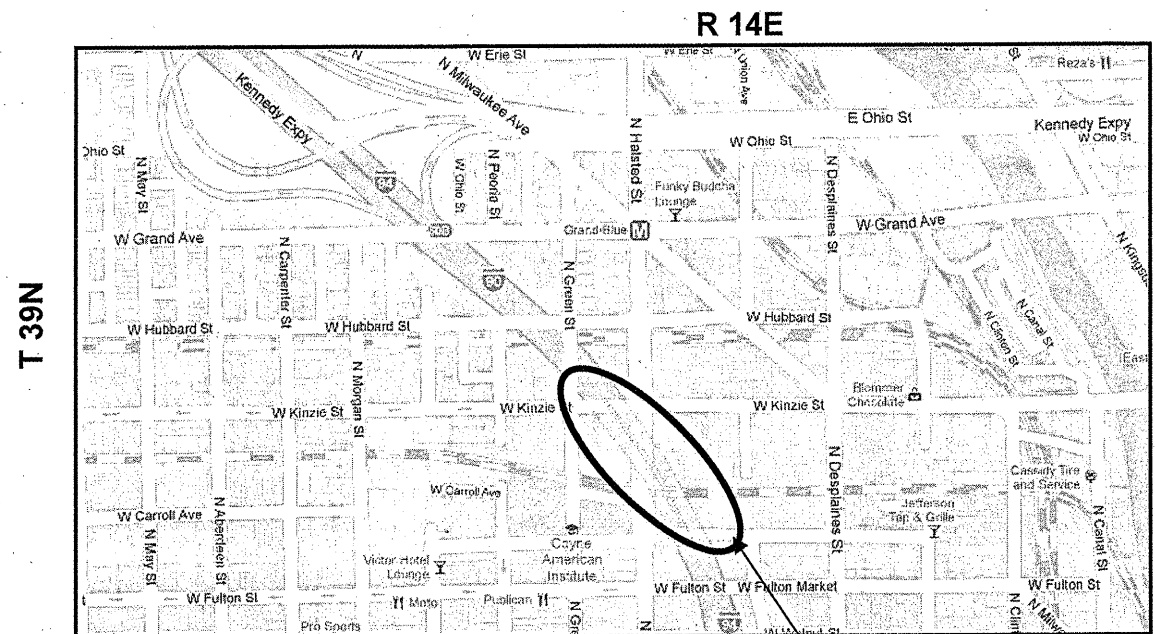
ILLINOIS DEPARTMENT OF TRANSPORTATION

LOCATION: 17
I-55 NB
OVER ASHLAND AVE

Revised 05/26/11 ARP

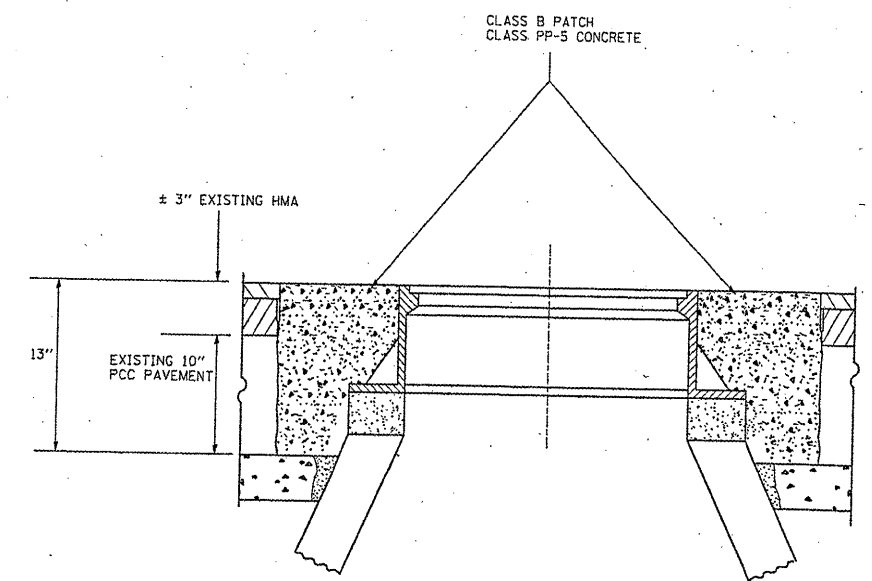
ROUTE VARIOUS	SECTION 2010-069- I	COUNTY VARIOUS	TOTAL SHEETS 34	SHEET NUMBER 30A
------------------	------------------------	-------------------	--------------------	---------------------

Contract 60L54



CITY OF CHICAGO
WEST TOWNSHIP
COOK COUNTY

LOCATION 20 :
I-90/94 EB, TUNNEL BETWEEN KINZIE ST. & FULTON ST.

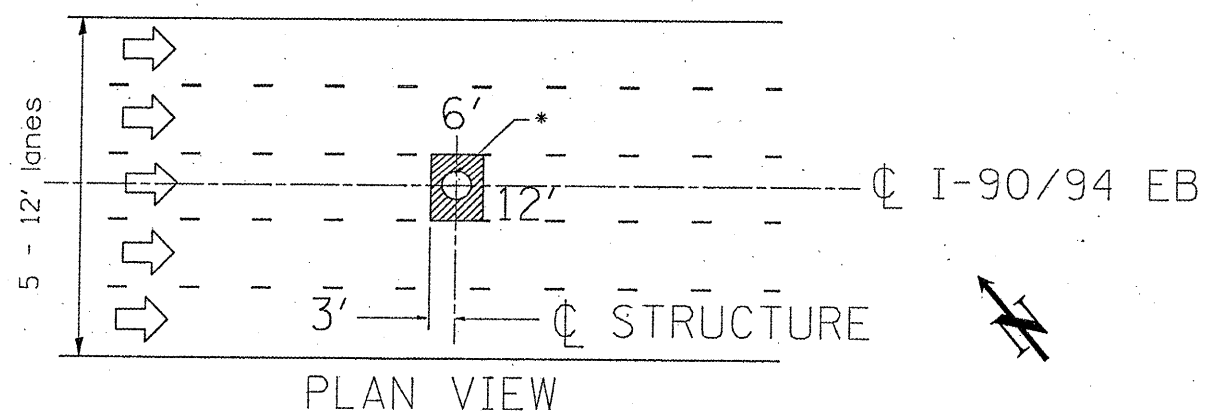


CROSS SECTIONAL VIEW

TRAFFIC DATA

I-90/94 SPEED LIMIT = 55 MPH
2009 ADT = 284,300

➡ - indicates direction of traffic.



PLAN VIEW

NOTES:

- EXISTING BROKEN FRAMES AND LIDS SHALL BE REMOVED AND DISPOSED OF BY THE CONTRACTOR AND SHALL BE REPLACED AS DIRECTED BY THE ENGINEER.
- REMOVAL OF EXISTING HMA INCLUDED IN COST OF CLASS B PATCH.
- TOP OF CLASS B PATCH SHALL MATCH ELEVATION OF ADJACENT HMA.

* Existing Frame & Lid to be removed & replaced.

-CLASS B PATCH, TYPE II, 13 INCH

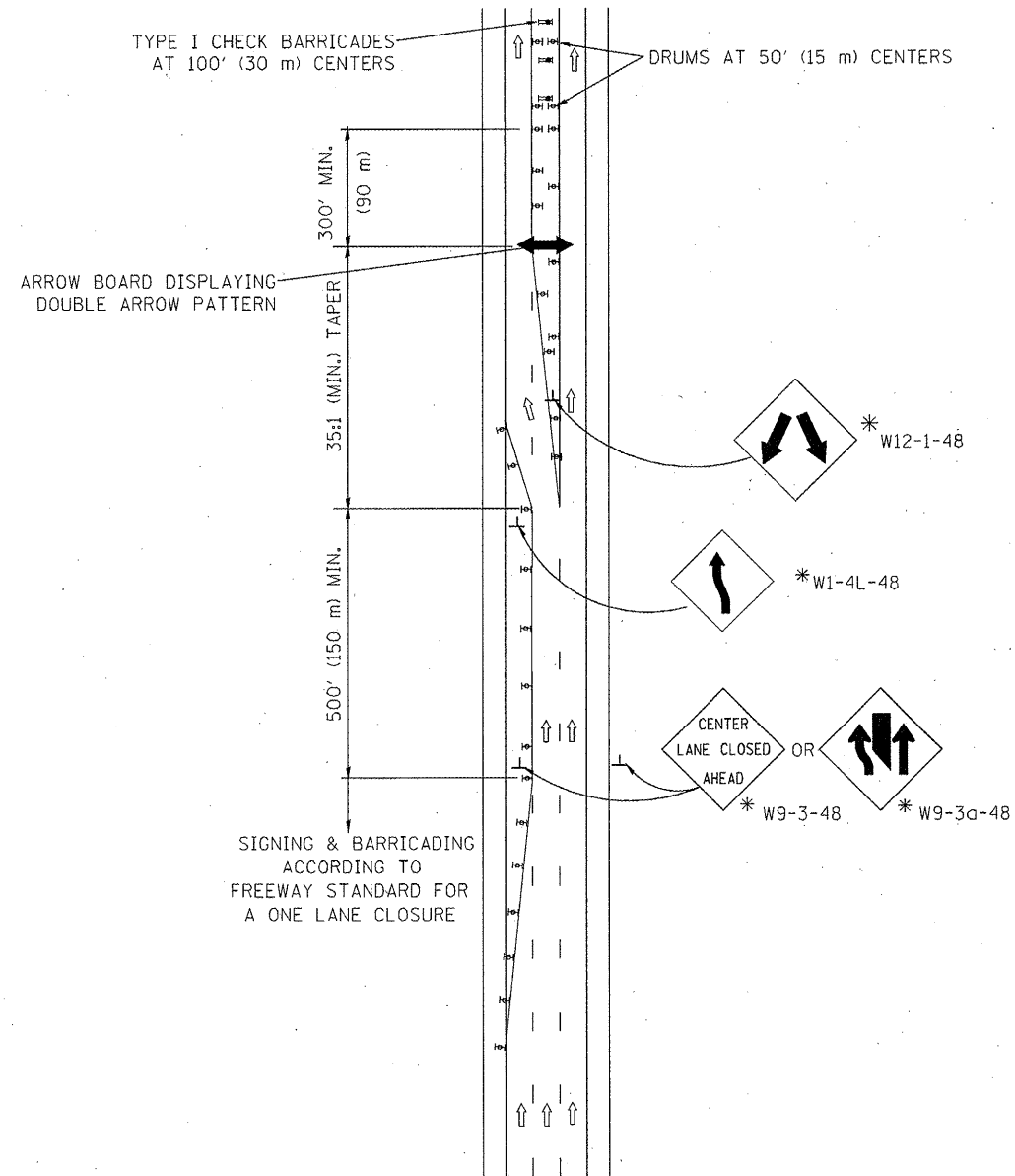
BILL OF MATERIAL		
DESCRIPTION	UNIT	QUANTITY
CLASS B PATCH, TYPE II, 13 INCH	SQ YD	8.0
SAW CUTS	FT	60.0
DOWEL BARS, 1 1/2"	EACH	24
FRAMES & LIDS, TYPE I, CLOSED LID	EACH	1

Added Sheet 5/27/11 ARP

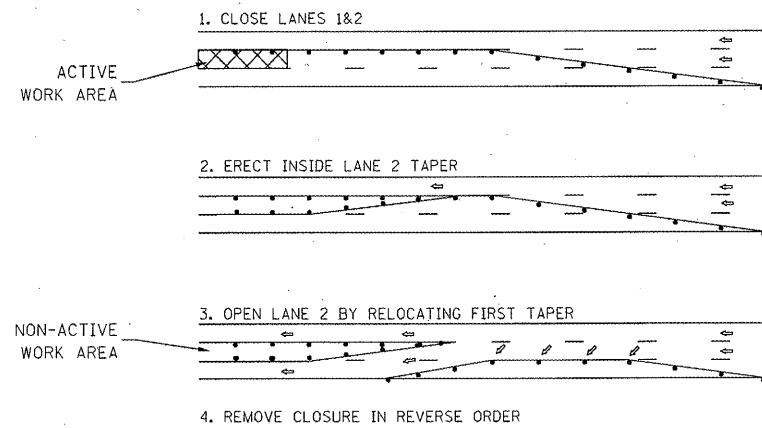
ILLINOIS DEPARTMENT OF TRANSPORTATION

LOCATION: 20
I-90/94 EB

CENTER LANE CLOSURE



INSTALLATION SEQUENCE

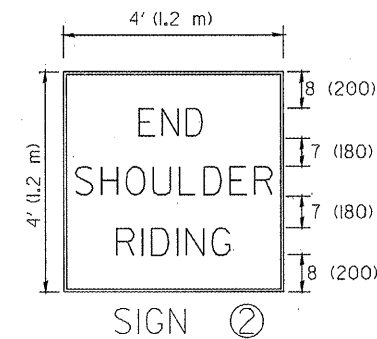
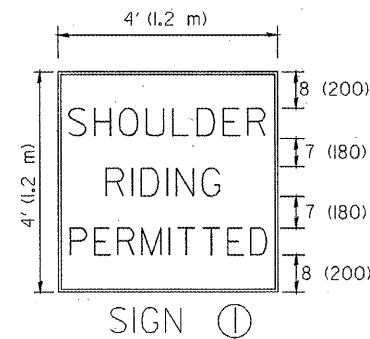
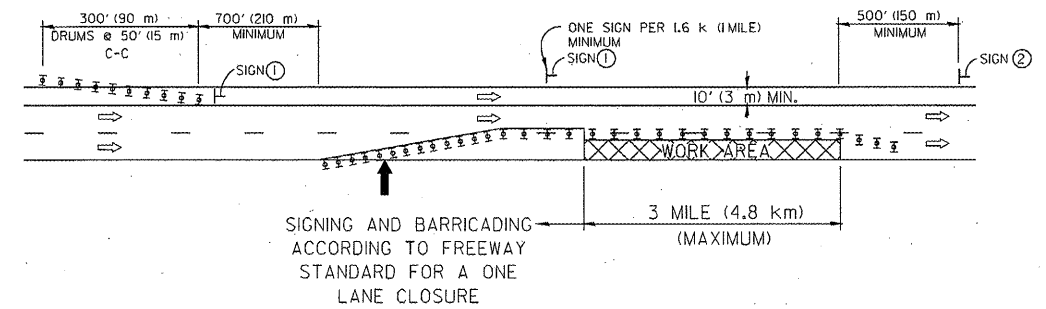
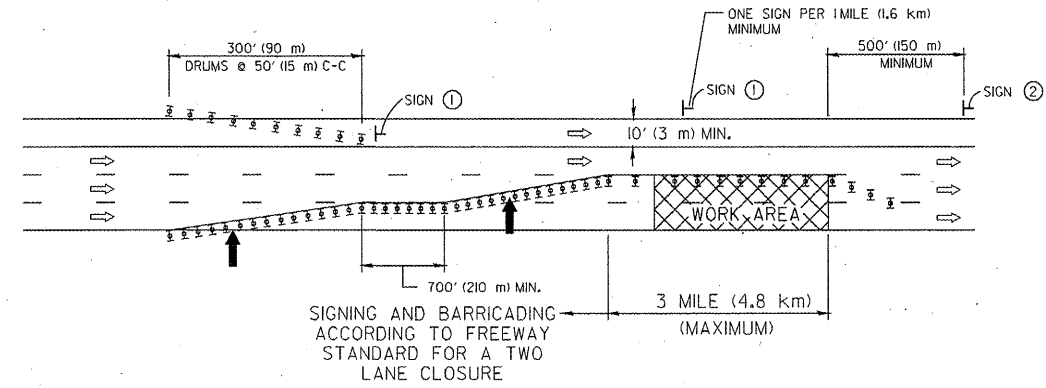


NOTES

- DRUMS WITH STEADY BURN LIGHTS SHALL BE USED AT 50' (15 m) CENTERS ON ALL TAPERS AND TANGENTS IN ADVANCE OF WORK AREA.
- CLOSURE SHALL BE USED ONLY FOR OPERATIONS LASTING 72 HOURS OR LESS.
- CENTER LANE CLOSURE CONFIGURATION IS NOT TO BE USED WITH WORKERS PRESENT.

SHOULDER LANE

NOTE: CLOSURE SHALL BE USED ONLY FOR OPERATIONS LASTING 72 HOURS OR LESS.



6 (150) SERIES 'C' LEGEND
BLACK LEGEND
WHITE REFLECT. BACKGROUND
1(25) BORDER

SYMBOLS

- ↑ DIRECTION OF TRAFFIC
- ➡ ARROWBOARD
- ⊗ ACTIVE WORK AREA
- ⊥ SIGN ON PORTABLE OR PERMANENT SUPPORT *
- ⊥ TYPE II BARRICADE, OR DRUM WITH MONO-DIRECTIONAL STEADY BURN LIGHT

ALL DIMENSIONS ARE IN INCHES (MILLIMETERS) UNLESS OTHERWISE SHOWN

* ALL SIGNS SHALL BE MOUNTED AT A MINIMUM HEIGHT OF 5' (1.5 m).

Added sheet 5/27/11 ARP

FILE NAME =	USER NAME = lsguo	DESIGNED -	REVISED - J.A.F. 04-03
W:\dst\std\22x34\to25.dgn		DRAWN -	REVISED - S.P.B. 01-07
		PLOT SCALE = 80,000' / 1" IN.	REVISED - S.P.B. 12-09
		PLOT DATE = 1/26/2010	REVISED -

STATE OF ILLINOIS
DEPARTMENT OF TRANSPORTATION

TRAFFIC CONTROL DETAILS FOR FREEWAY
CENTER LANE CLOSURE SHOULDER LANE

SCALE: NONE SHEET NO. 1 OF 1 SHEETS STA. TO STA.

F.A. RTE.	SECTION	COUNTY	TOTAL SHEETS	SHEET NO.
Var. 2010-069-3	TC-25	Var.	34	34C
FED. ROAD DIST. NO. 1 ILLINOIS FED. AID PROJECT			CONTRACT NO.	