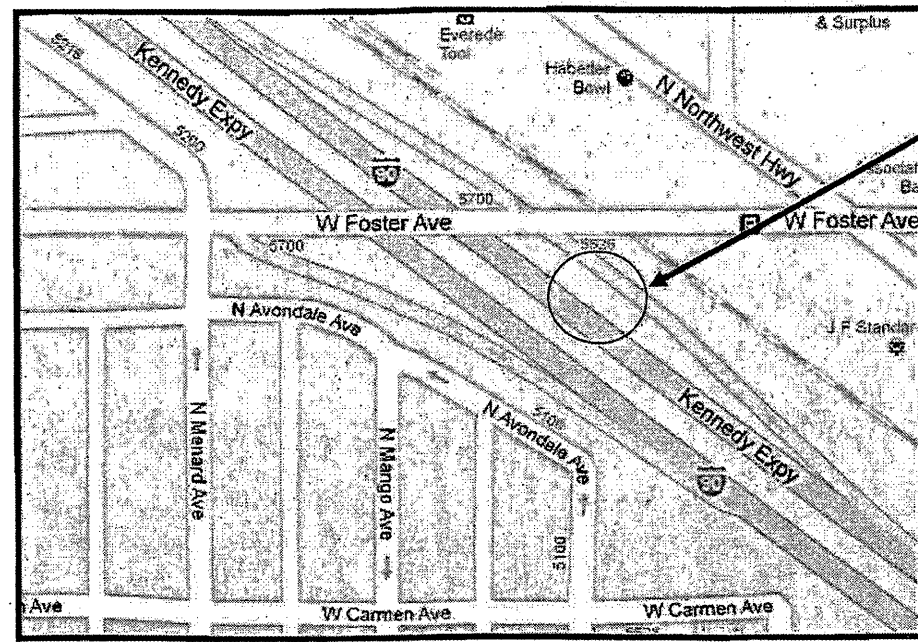


ROUTE	SECTION	COUNTY	TOTAL SHEETS	SHEET NUMBER
VARIOUS	2010-069-1	VARIOUS	34	14

Contract 60L54

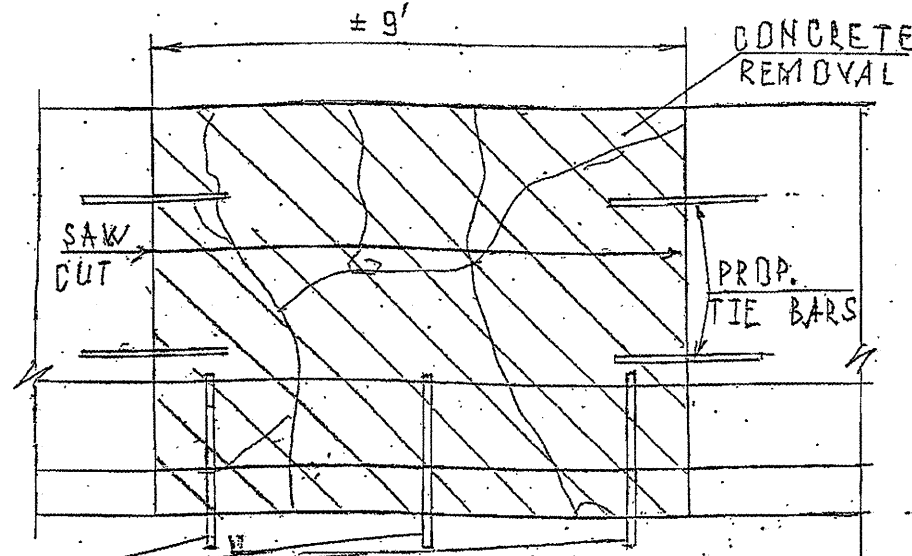
R 13 E

T 40N

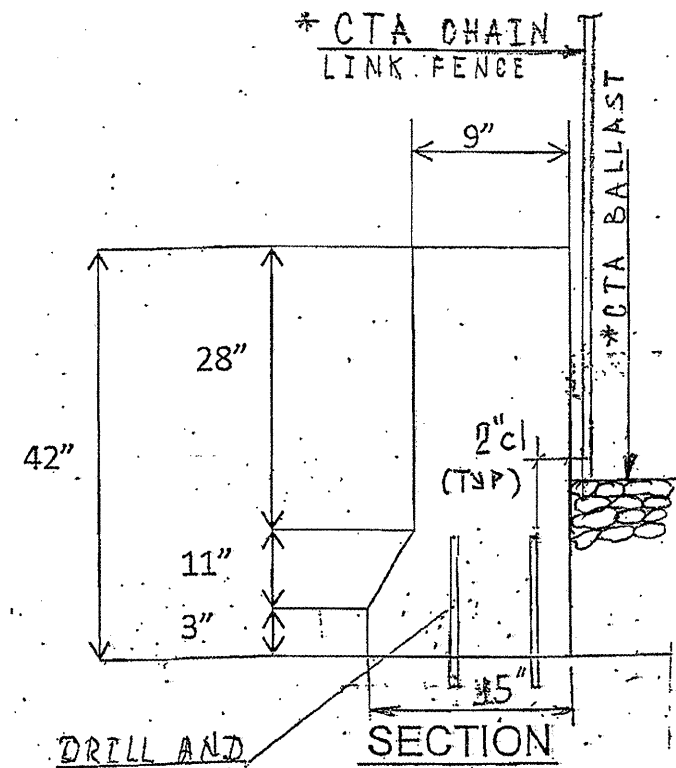


LOCATION 3: I-90 (KENNEDY EXPY)
SE OF FOSTER AVE (INBOUND) LEFT SIDE,
BY THE CTA TRACKS AT MILE MARKER
83/10.

CITY OF CHICAGO
JEFFERSON TOWNSHIP
COOK COUNTY



ELEVATION



SECTION

*DO NOT DISTURB



FULL DEPTH BARRIER REPAIR
FOR MORE DETAILS SEE SHEET # 8

FULL DEPTH BARRIER REPAIR:	
CONCRETE REMOVAL (CU YD)	1.0
CONCRETE STRUCTURE (CU YD)	1.0
FOR INFORMATION ONLY	

TRAFFIC DATA:
I-90: SPEED LIMIT = 55 MPH.
2008 ADT = 261600

ILLINOIS DEPARTMENT OF TRANSPORTATION
LOCATION: 3
I-90 (KENNEDY EXPRESSWAY)