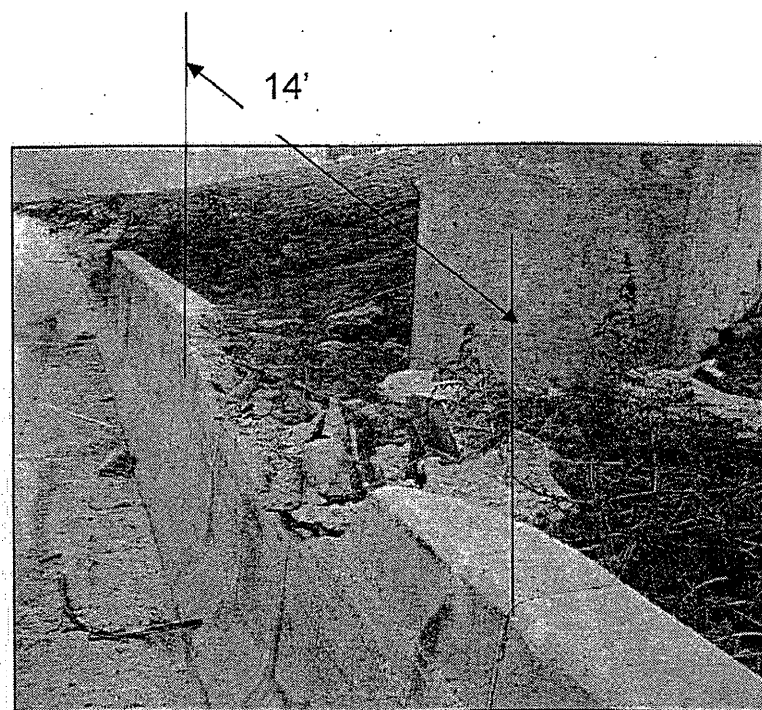
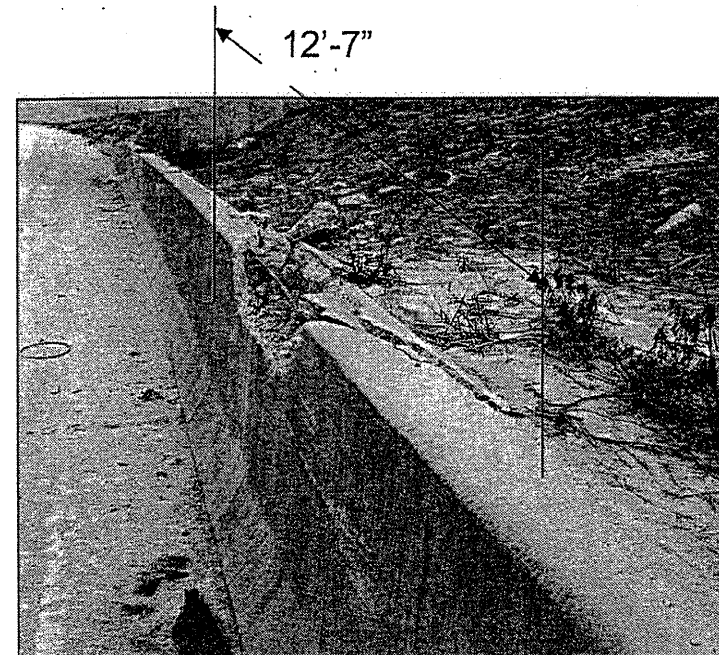


ROUTE	SECTION	COUNTY	TOTAL SHEETS	SHEET NUMBER
VARIOUS	2010-069-1	VARIOUS	34	22

Contract 60L54



LOCATION 10

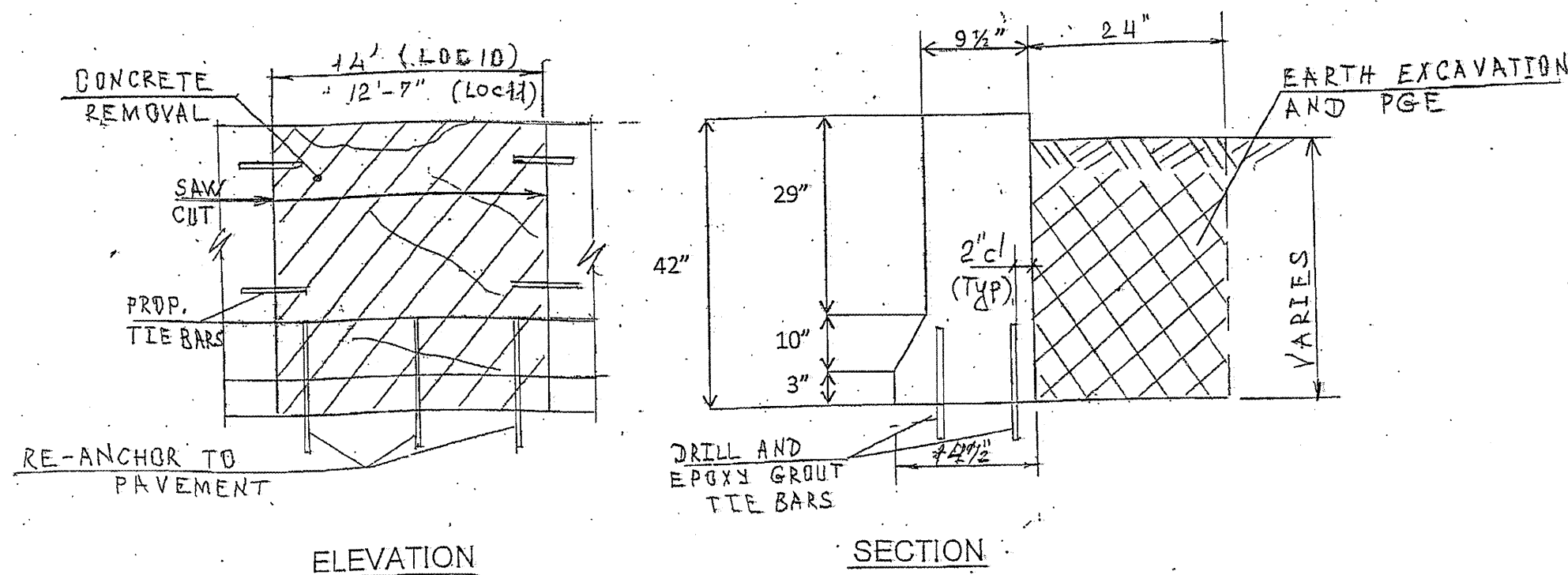


LOCATION 11

FULL DEPTH BARRIER REPAIR		
CONCRETE REMOVAL	(CU YD)	3.0
CONCRETE STRUCTURE	(CU YD)	3.0
POROUS GRANULAR EMBANKMENT	(CU YD)	6.0
EARTH EXCAVATION	(CU YD)	7.0
TOPSOIL FURNISH AND PLACE, 4"	(SQ YD)	6.0
SEEDING, CLASS 2A	(ACRE)	0.002
TEMPORARY EROSION CONTROL BLANKET	(SQ YD)	6.0

FOR INFORMATION ONLY (2 LOCATIONS)

FULL DEPTH BARRIER REPAIR  
FOR MORE DETAILS SEE SHEET # 8



ILLINOIS DEPARTMENT OF TRANSPORTATION  
LOCATION: 10 & 11  
SECTION AND ELEVATION  
I-94 AT 65<sup>th</sup> STREET