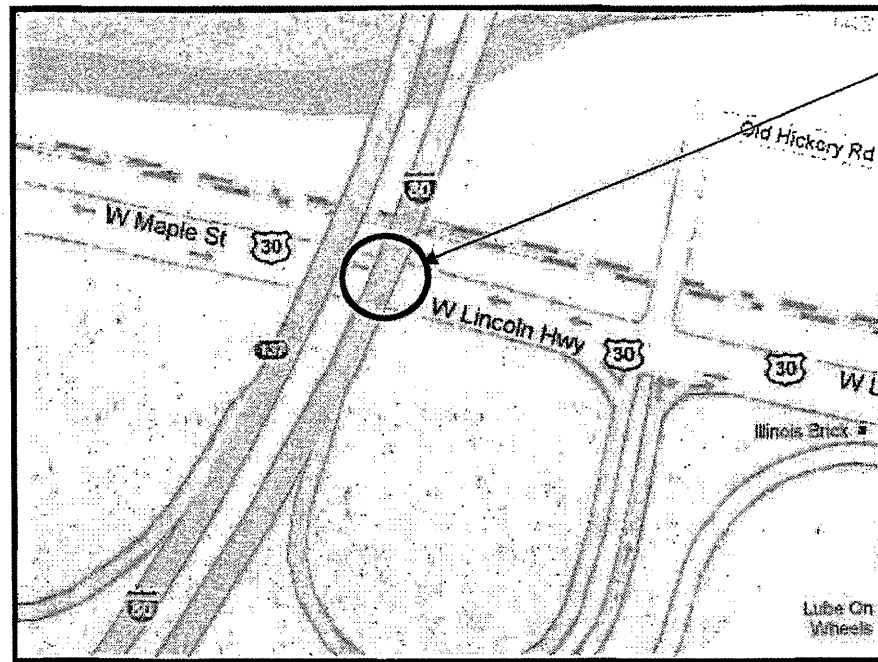


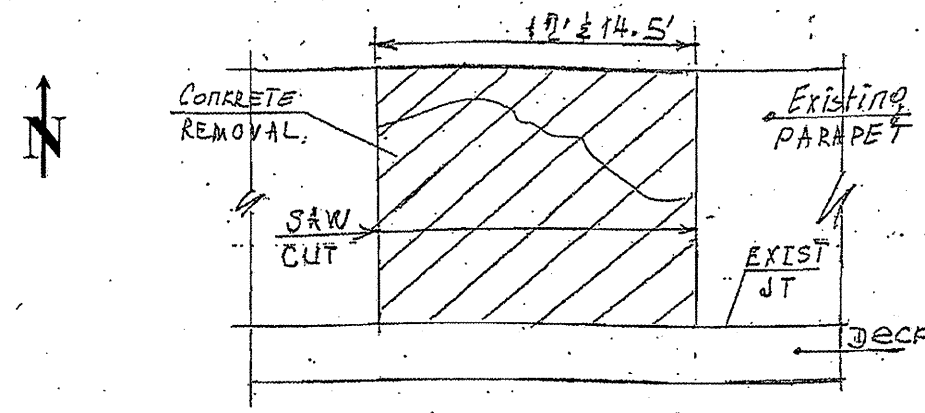
ROUTE	SECTION	COUNTY	TOTAL SHEETS	SHEET NUMBER
VARIOUS	2010-069-1	VARIOUS	34	29

Contract 60L54

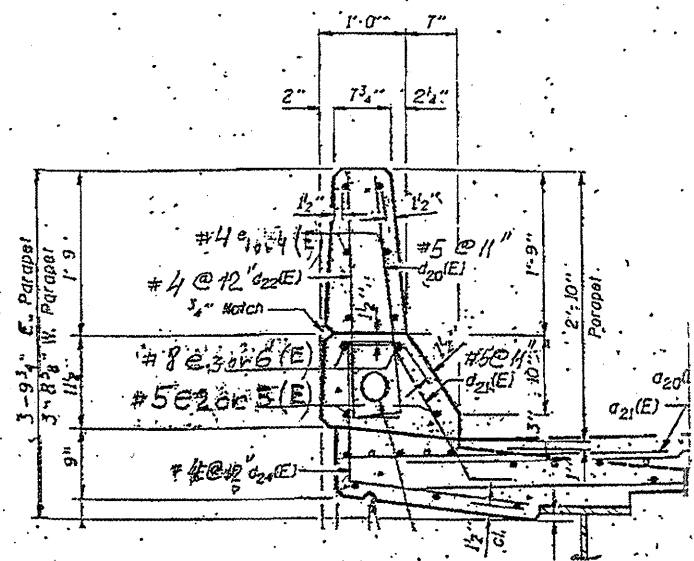
R 11E



**LOCATION 18:**  
I-80 EB OVER US 30 (SN 099-0069).  
RIGHT SIDE OF THE SOUTH  
PARAPET (OVER US 30) AND  
WITHIN 1/10<sup>th</sup> OF A MILE LEFT SIDE  
OF NORTH PARAPET.



ELEVATION



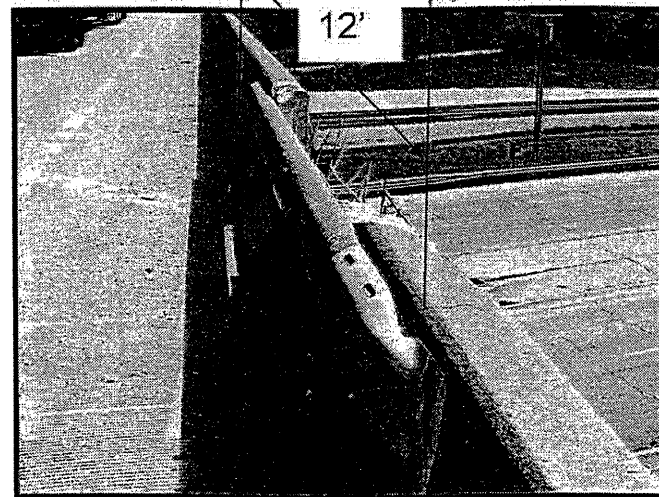
SECTION

BRIDGE PARAPET REPAIR  
FOR MORE DETAILS SEE SHEET #10

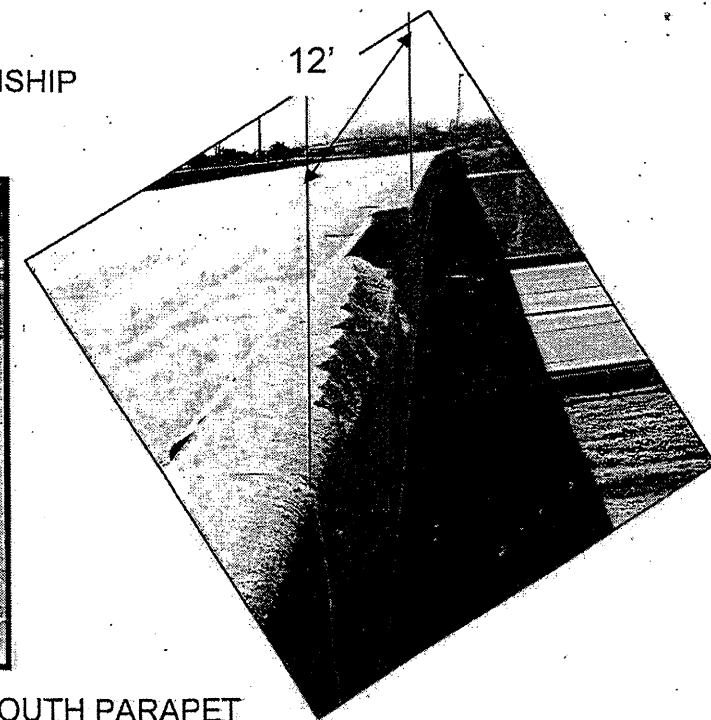
BAR	NO	SIZE	LENGTH	SHAPE
e1(E)	6	4	11'-10"	---
e2(E)	2	5	11'-10"	---
e3(E)	2	8	11'-10"	---
e4(E)	6	4	14'-3"	---
e5(E)	2	5	14'-3"	---
e6(E)	2	8	14'-3"	---

REINFORCEMENT BARS EPOXY COATED	LBS	300
CONCRETE SUPERSTRUCTURE	CU. YDS	3.0
CONCRETE REMOVAL	CU. YDS	3.0
MECHANICAL SOLICE	EACH	40
FOR INFORMATION ONLY (2Locations)		

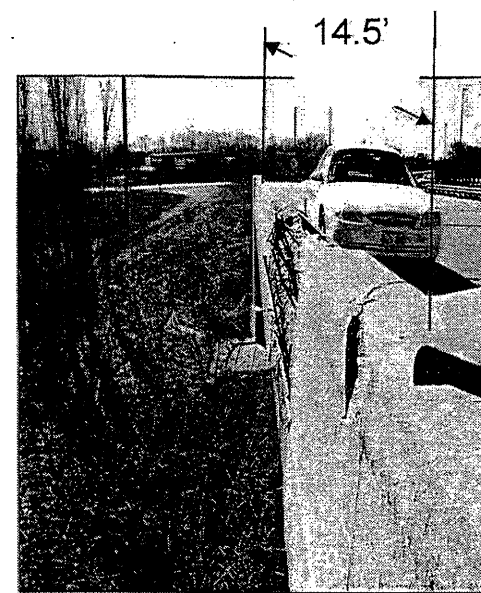
NEW LENOX  
NEW LENOX TOWNSHIP  
WILL COUNTY



SOUTH PARAPET



PARAPET REPAIR



NORTH PARAPET

**TRAFFIC DATA:**

I-80 SPEED LIMIT = 65 MPH  
2009 ADT = 37850

ILLINOIS DEPARTMENT OF TRANSPORTATION  
  
LOCATION: 18  
I-80 EB  
OVER US 30 & RR