

STATE OF ILLINOIS  
DEPARTMENT OF TRANSPORTATION  
DIVISION OF HIGHWAYS

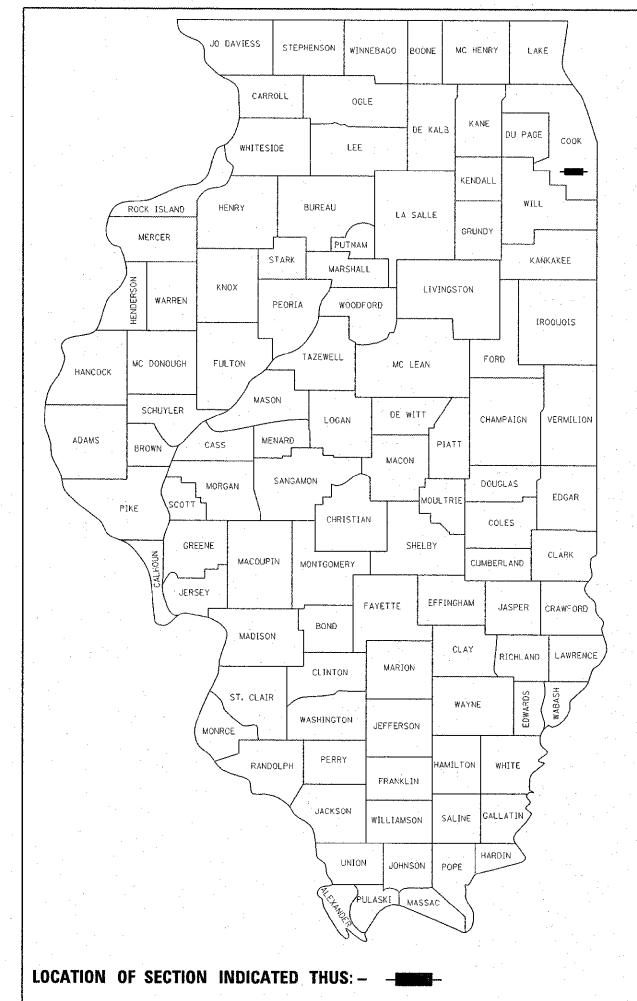
**PROPOSED  
HIGHWAY PLANS**

**FAU 2783/RIDGELAND AVENUE  
26TH ST. TO OGDEN AVENUE  
SECTION: 2010-106-RS  
RESURFACING**

**COOK COUNTY  
C-91-099-11**

F.A.U. RTE.	SECTION	COUNTY	TOTAL SHEETS	SHEET NO.
2783	2010-106-RS	COOK	19	1
FED. ROAD DIST. NO.		ILLINOIS	CONTRACT NO. 60M32	

D -91-099-11



LOCATION OF SECTION INDICATED THIS: - ■ -

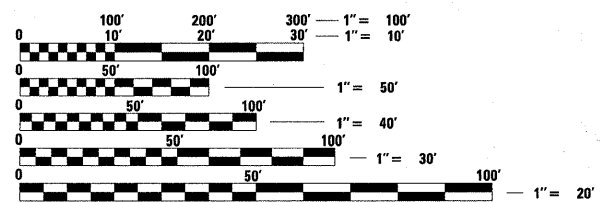
FOR INDEX OF SHEETS, SEE SHEET NO. 2

THE PROJECT IS LOCATED IN THE CITY OF BERWYN

PROJECT ENDS STA. 51+90

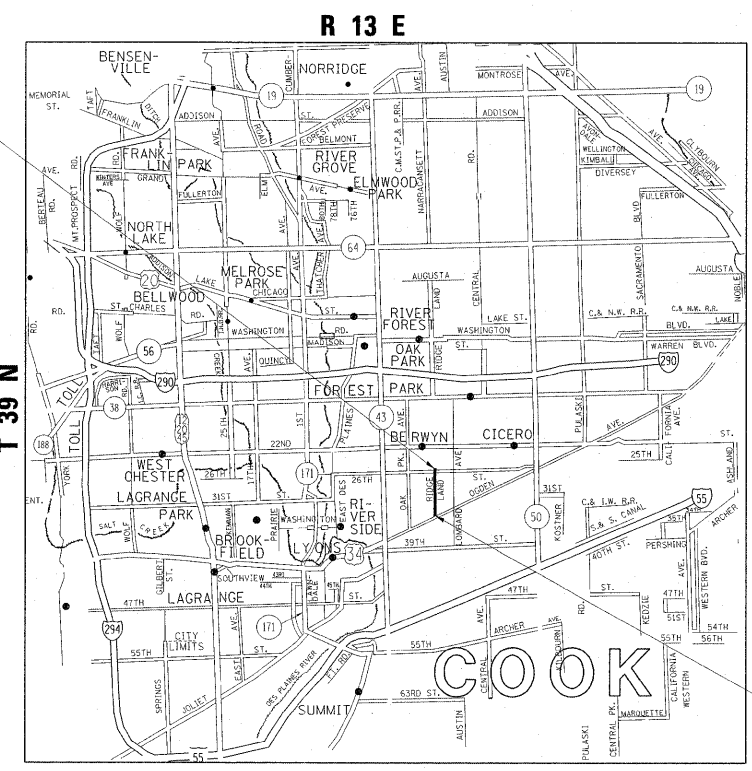
OMISSION STA. 22+60 TO STA. 23+05

**TRAFFIC DATA**  
2006 ADT = 7,500  
POSTED SPEED LIMIT = 25 MPH



FULL SIZE PLANS HAVE BEEN PREPARED USING STANDARD ENGINEERING SCALES. REDUCED SIZED PLANS WILL NOT CONFORM TO STANDARD SCALES. IN MAKING MEASUREMENTS ON REDUCED PLANS, THE ABOVE SCALES MAY BE USED.

C.U.A.N.  
CHICAGO UTILITY ALERT NETWORK  
(312) 744-7000



PROJECT BEGINS STA. 2+83

PROJECT ENGINEER KARI SMITH (847) 705-4437  
PROJECT MANAGER KEN ENG (847) 705-4247

GROSS LENGTH OF PROJECT = 4,907 LINEAL FEET = 0.929 MILE  
NET LENGTH OF PROJECT = 4,862 LINEAL FEET = 0.921 MILE

CONTRACT NO. 60M32

STATE OF ILLINOIS  
DEPARTMENT OF TRANSPORTATION  
DIVISION OF HIGHWAYS

SUBMITTED April 10, 20 11

*Diana M. O'Keefe*  
DEPUTY DIRECTOR OF HIGHWAYS, REGION ENGINEER

May 13 20 11  
*Scott E. Stettin*  
Acting ENGINEER OF DESIGN AND ENVIRONMENT

May 13 20 11  
*Christine M. Reed*  
DIRECTOR OF HIGHWAYS, CHIEF ENGINEER

**PRINTED BY THE AUTHORITY  
OF THE STATE OF ILLINOIS**