

STATE OF ILLINOIS
DEPARTMENT OF TRANSPORTATION
DIVISION OF HIGHWAYS

**PROPOSED
HIGHWAY PLANS**

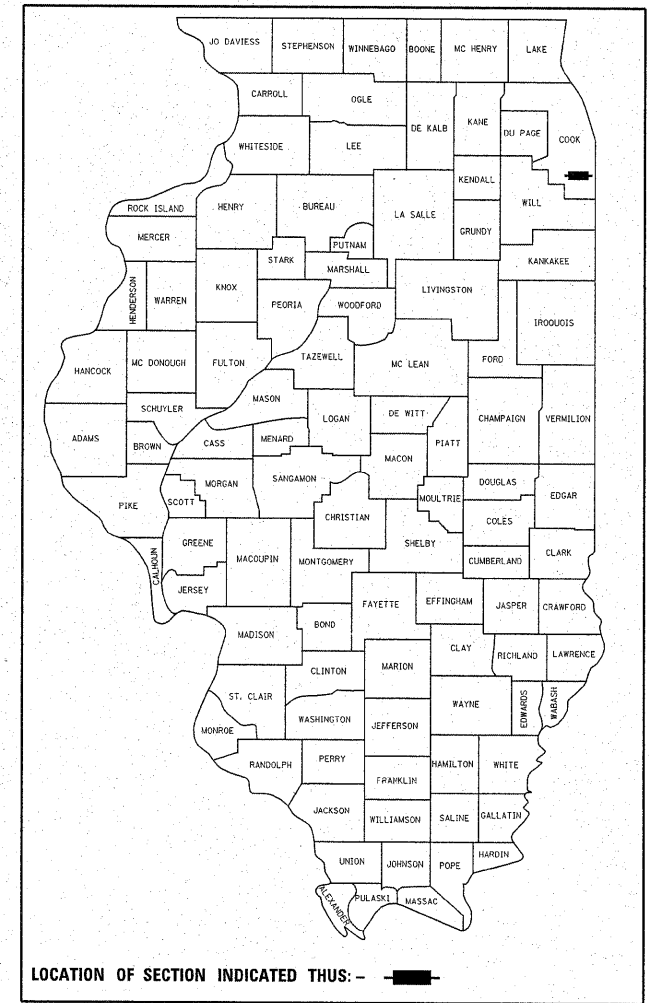
FAU 1620: RIDGE RD.
DIXIE HIGHWAY TO ILL 1 (HALSTED ST.)
SECTION: 44-RS-3
RESURFACING
COOK COUNTY
C-91-107-11

F.A.U. RTE.	SECTION	COUNTY	TOTAL SHEETS	SHEET NO.
1620	44-RS-3	COOK	32	1
FED. ROAD DIST. NO.	ILLINOIS	CONTRACT NO.	60M40	

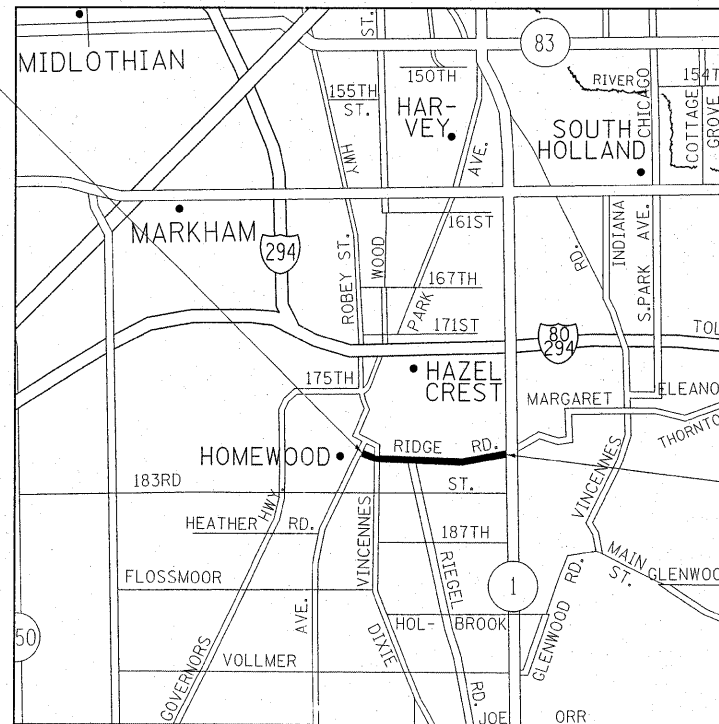
D-91-107-11

FOR INDEX OF SHEETS, SEE SHEET NO. 2

THE PROJECT IS LOCATED IN THE VILLAGE OF HOMEWOOD

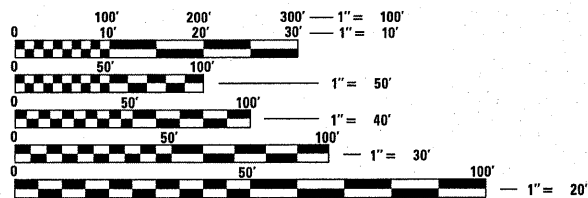


PROJECT BEGINS
STA. 03+79



2006 ADT = 17,000
POSTED SPEED LIMIT = 30 MPH

PROJECT ENDS
STA. 89+58



FULL SIZE PLANS HAVE BEEN PREPARED USING STANDARD ENGINEERING SCALES. REDUCED SIZED PLANS WILL NOT CONFORM TO STANDARD SCALES. IN MAKING MEASUREMENTS ON REDUCED PLANS, THE ABOVE SCALES MAY BE USED.

J.U.L.I.E.
JOINT UTILITY LOCATION INFORMATION FOR EXCAVATION
1-800-892-0123
OR 811

PROJECT ENGINEER JENPAI CHANGE (847) 705-4432
PROJECT MANAGER KEN ENG (847) 705-4247

GROSS & NET LENGTH OF PROJECT = 8,579 LINEAL FEET = 1.62 MILES

CONTRACT NO. 60M40

STATE OF ILLINOIS
DEPARTMENT OF TRANSPORTATION
DIVISION OF HIGHWAYS

SUBMITTED APRIL 15, 20 11

Diana M. O'Keefe DEPUTY DIRECTOR OF HIGHWAYS, REGION ENGINEER

May 13 20 11

Scott E. Stitt, P.E. ENGINEER OF DESIGN AND ENVIRONMENT

May 13 20 11

Christine M. Reed DIRECTOR OF HIGHWAYS, CHIEF ENGINEER

PRINTED BY THE AUTHORITY
OF THE STATE OF ILLINOIS