

STATE OF ILLINOIS
DEPARTMENT OF TRANSPORTATION
DIVISION OF HIGHWAYS

**PROPOSED
HIGHWAY PLANS**

F.A.P. 345 US 20 (LAKE STREET)
SECTION 8R-1-RS-4
EAST OF WELD RD. TO WEST OF SHALES PARKWAY
BRIDGE REPAIRS AND RESURFACING

COOK AND KANE COUNTIES
C-91-113-11

F.A.P. RTE.	SECTION	COUNTY	TOTAL SHEETS	SHEET NO.
345	8R-1-RS-4	KANE/COOK	124	1
FED. ROAD DIST. NO.	ILLINOIS	CONTRACT NO.	60M46	

D-91-113-11 *124-2 = 122

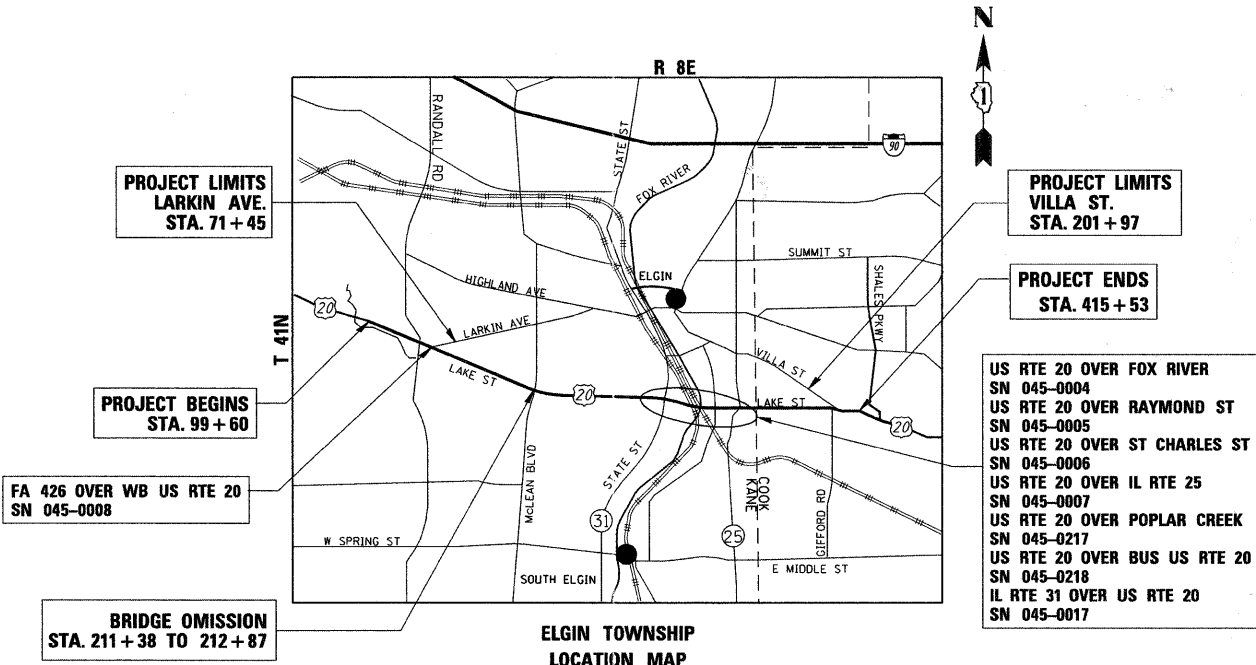
*122 + 6 = 128

FOR INDEX OF SHEETS, SEE SHEET NO. 2

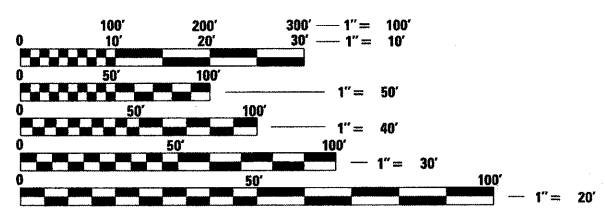
THIS IMPROVEMENT IS LOCATED
WITHIN THE CITY OF ELGIN

TRAFFIC DATA

2007 ADT: 30,000-58,200
POSTED SPEED LIMIT - 55 MPH

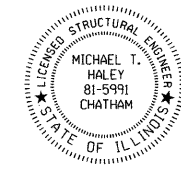


ELGIN TOWNSHIP
LOCATION MAP
1" = 5000'
GROSS OF PROJECT = 31593 = 5.96 MI.
NET LENGTH OF PROJECT = 31443 = 5.95 MI.

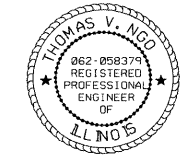


FULL SIZE PLANS HAVE BEEN PREPARED USING STANDARD ENGINEERING SCALES. REDUCED SIZED PLANS WILL NOT CONFORM TO STANDARD SCALES. IN MAKING MEASUREMENTS ON REDUCED PLANS, THE ABOVE SCALES MAY BE USED.

J.U.L.I.E.
JOINT UTILITY LOCATION INFORMATION FOR EXCAVATION
1-800-892-0123
OR 811



LIN ENGINEERING, LTD.
MICHAEL T. HALEY, S.E.
81-5991
Michael T. Haley
DATE: 03/31/2011
SIGNATURE AND SEAL APPLIES TO DRWG NO 69 TO 100



MILLENNIA PROFESSIONAL SERVICES
THOMAS V. NGO, P.E.
062-058379
Thomas V. Ngo
DATE: 03/31/2011
SIGNATURE AND SEAL APPLIES TO DRWG NO 1 TO 68

ABNA ENGINEERING, INC.
ROBERT J. LOEHR, S.E.
3992
Robert J. Loehr
DATE: 03/31/2011
SIGNATURE AND SEAL APPLIES TO DRWG NO 101 TO 108



ABNA ENGINEERING, INC.
THOMAS P. PAGLICCHI, P.E.
062-056747
Thomas P. Paglicchi
DATE: 03/31/2011
SIGNATURE AND SEAL APPLIES TO DRWG NO 109 TO 111



STATE OF ILLINOIS
DEPARTMENT OF TRANSPORTATION
DIVISION OF HIGHWAYS
SUBMITTED MARCH 30, 2011
Diana M. O'Keefe
DEPUTY DIRECTOR OF HIGHWAYS, REGION ENGINEER
May 13 2011
Scott E. Stitt, P.E.
Acting ENGINEER OF DESIGN AND ENVIRONMENT
May 13 2011
Christine M. Road
DIRECTOR OF HIGHWAYS, CHIEF ENGINEER

MILLENNIA PROFESSIONAL SERVICES
200 22ND Street, Suite 216, Lombard, IL 60148
630.705.0110 voice, 630.839.2566 fax
www.mps-il.com

**PRINTED BY THE AUTHORITY
OF THE STATE OF ILLINOIS**

Rev. 6-6-11

DISTRICT ONE - PLAN PREP ENGINEER: KEN ENG (847) 705-4247

CONTRACT NO. 60M46

INDEX OF SHEETS

1	COVER SHEET
2	INDEX OF SHEETS, HIGHWAY STANDARDS, GENERAL NOTES, AND COMMITMENTS
3-6	SUMMARY OF QUANTITIES
7-8	TYPICAL SECTIONS
9-22	PLAN AND PAVEMENT MARKING PLAN
23-25	SIGNING SCHEDULE
26-39	SIGNING PLAN
40-60	SIGN DETAILS
61-62	SUGGESTED STAGES OF CONSTRUCTION AND TRAFFIC CONTROL STAGE I
63-64	SUGGESTED STAGES OF CONSTRUCTION AND TRAFFIC CONTROL STAGE II
65	SUGGESTED STAGES OF CONSTRUCTION AND TRAFFIC CONTROL (IL RTE 31 OVER US RTE 20)
66	SUGGESTED STAGES OF CONSTRUCTION AND TRAFFIC CONTROL (WB US RTE 20 OVER BUS. US RTE 20)
67	DETOUR PLAN
68	Not used
BRIDGE REPAIR PLAN (LIN ENGINEERING)	
69-72	IL RTE 31 OVER US 20 (SN 045-0017)
73-79	US 20 BY-PASS OVER FOX RIVER (SN 045-004)
80-83	US 20 OVER RAYMOND ST (SN 045-0005)
84-86	US 20 OVER ST. CHARLES ST (SN 045-0006)
87-89	US 20 OVER IL 25 (LIBERTY STREET) (SN 045-0007)
90-93	US 20 OVER POPLAR CREEK (SN 016-0217)
94-100	W.B. US 20 OVER BUS US 20 (SN 016-0218)
BRIDGE REPAIR PLAN (ABNA)	
101-108	FA 426 OVER WB US RTE 20 (SN 045-0008)
109-111	SUGGESTED STAGES OF CONSTRUCTION
112	DETECTOR LOOP PLAN
113	PAVEMENT PATCHING FOR HMA SURFACED PAVEMENT (BD22)
114	CURB OR CURB AND GUTTER REMOVAL AND REPLACEMENT (BD24)
115	BUTT JOINTS AND HMA TAPER (BD32)
116	HMA TAPER AT EDGE OF P.C.C. PAVEMENT (BD33)
117	FREEWAY ENTRANCE AND EXIT RAMP CLOSURE DETAILS (TC08)
117A	SINGLE AND MULTILANE WEAVE (TC9)
118	TRAFFIC CONTROL AND PROTECTION FOR SIDE ROADS, INTERSECTIONS AND DRIVEWAYS (TC10)
118A&B	MULTI-LANE FREEWAY PAVEMENT MARKING (TC12)
119	RAISED REFLECTIVE PAVEMENT MARKERS, SNOW PLOW RESISTANT (TC11)
120	DISTRICT ONE TYPICAL PAVEMENT MARKINGS (TC13)
121	TRAFFIC CONTROL AND PROTECTION FOR AT TURN BAYS (TC14) (TO REMAIN OPEN TO TRAFFIC)
121A	PAVEMENT MARKING LETTERS AND SYMBOLS FOR TRAFFIC STAGING (TC16)
122	TRAFFIC CONTROL DETAILS FOR FREEWAY SHOULDER CLOSURES PARTIAL RAMP CLOSURES (TC17)
122A	SIGNING FOR FLAGGING OPERATIONS AT WORK ZONE OPENINGS (TC18)
123	ARTERIAL ROAD INFORMATION SIGN (TC22)
123A	TRAFFIC CONTROL DETAILS FOR FREEWAY CENTER LANE LOSURE SHOULDER LANE (TC25)
124	DETECTOR LOOP INSTALLATION DETAILS FOR ROADWAY (TS07)
124A	MILE POST MARKERS - CORE SIGNS - MAJOR GUIDE SIGN LAYOUT - ARROWS (TC27)

LIST OF ILLINOIS DOT HIGHWAY STANDARDS

000001-06	STANDARD SYMBOLS, ABBREVIATIONS, AND PATTERNS
001006	DECIMAL OF AN INCH AND OF A FOOT
280001-05	TEMPORARY EROSION CONTROL SYSTEMS
442201-03	CLASS C AND D PATCHES
482011-03	HMA SHOULDER STRIPS/SHOULDERS WITH RESURFACING OR WIDENING AND RESURFACING PROJECTS
606001-04	CONCRETE CURB TYPE B AND COMBINATION CONCRETE CURB AND GUTTER
635011-02	REFLECTOR MARKER AND MOUNTING DETAILS
701201-04	LANE CLOSURE, 2L, 2W, DAY ONLY, FOR SPEEDS >= 45 MPH
701301-04	LANE CLOSURE, 2L, 2W, SHORT TIME OPERATIONS
701306-03	LANE CLOSURE, 2L, 2W, SLOW MOVING OPERATIONS DAY ONLY, FOR SPEEDS >= 45 MPH
701311-03	LANE CLOSURE, 2L, 2W, MOVING OPERATIONS - DAY ONLY
701336-06	LANE CLOSURE, 2L, 2W, WORK AREAS IN SERIES, FOR SPEEDS > 45 MPH
701400-05	APPROACH TO LANE CLOSURE, FREEWAY/EXPRESSWAY
701401-01	LANE CLOSURE, FREEWAY/EXPRESSWAY
701402-08	LANE CLOSURE, FREEWAY/EXPRESSWAY, WITH BARRIER
701406-06	LANE CLOSURE, FREEWAY/EXPRESSWAY, DAY OPERATIONS ONLY
701411-07	LANE CLOSURE, MULTILANE, AT ENTRANCE OR EXIT RAMP, FOR SPEEDS > 45 MPH
701421-03	LANE CLOSURE, MULTILANE, DAY OPERATIONS ONLY FOR SPEEDS > OR = 45 MPH TO 55 MPH
701426-04	LANE CLOSURE, MULTILANE, INTERMITTENT OR MOVING OPERATIONS FOR SPEEDS > OR = 45 MPH
701446-02	TWO LANE LANE CLOSURE, FREEWAY/EXPRESSWAY
701901-01	TRAFFIC CONTROL DEVICES
704001-06	TEMPORARY CONCRETE BARRIERS
720001-01	SIGN PANEL MOUNTING DETAILS
720011-01	METAL POSTS FOR SIGNS, MARKERS AND DELINEATORS
729001-01	APPLICATIONS OF TYPE A AND B METAL POSTS (FOR SIGNS AND MARKERS)
780001-02	TYPICAL PAVEMENT MARKINGS

COMMITMENTS

THE CONTRACTOR SHALL COORDINATE CONSTRUCTION ACTIVITIES AND STAGING/TRAFFIC CONTROL WITH ANY ONGOING PROJECTS IN THE AREA, POSSIBLY INCLUDING CONTRACT 60K90 (MCLEAN BLVD. INTERCHANGE), 62529 (RESURFACING IMMEDIATELY WEST OF THIS CONTRACT), AND LOCAL STREET IMPROVEMENTS AND/OR SEWER WORK UNDERWAY BY PERMIT IN THE CITY OF ELGIN IN THE VICINITY OF IL ROUTE 31 AND/OR IL ROUTE 25 NEAR US 20.

GENERAL NOTES

- BEFORE STARTING ANY EXCAVATION, THE CONTRACTOR SHALL CALL "J.U.L.I.E." AT 800-892-0123 FOR FIELD LOCATIONS OF BURIED ELECTRIC, TELEPHONE, AND GAS FACILITIES. 48 HOUR NOTIFICATION IS REQUIRED.
- THE CONTRACTOR SHALL COORDINATE CONSTRUCTION ACTIVITIES WITH THE UTILITY COMPANIES, CITY OF ELGIN.
- THE CONTRACTOR WILL NOT BE ALLOWED TO SET UP A YARD OR FIELD OFFICE ON STATE PROPERTY WITHOUT WRITTEN PERMISSION FROM THE DEPARTMENT.
- ANY PAVEMENT MARKINGS AND RAISED REFLECTIVE PAVEMENT MARKERS OBLITERATED BY MILLING AND RESURFACING OPERATIONS ON SIDE STREETS AND ENTRANCES SHALL BE REPLACED AND PAID FOR IN KIND.
- ALL DAMAGE TO EXISTING PAVEMENT MARKING OR RAISED REFLECTIVE PAVEMENT MARKERS OUTSIDE THE REMOVAL LINE SHOWN ON THE PLANS SHALL BE REPLACED AT THE CONTRACTORS EXPENSE. NO ADDITIONAL COST TO THE DEPARTMENT.
- BEFORE BEGINNING ANY WORK, THE CONTRACTOR SHALL RETAIN AND RECORD FOR FUTURE REFERENCES, ALL EXISTING PAVEMENT MARKING LINES AND RAISED REFLECTIVE PAVEMENT MARKERS IN ORDER THAT THESE LOCATIONS CAN BE RE-ESTABLISHED FOR STRIPING. EXACT LOCATIONS OF ALL STRIPING SHALL BE AS DIRECTED BY THE ENGINEER.
- ALL PAVEMENT PATCHING LOCATIONS WILL BE DETERMINED IN THE FIELD BY THE ENGINEER.
- THE CONTRACTOR SHALL BE RESPONSIBLE FOR VERIFYING ALL DIMENSIONS AND CONDITIONS EXISTING IN THE FIELD PRIOR TO CONSTRUCTION AND ORDERING MATERIALS.
- THE CONTRACTOR SHALL CONTACT THE DISTRICT ONE TRAFFIC CONTROL SUPERVISOR AT (847) 705-4470 A MINIMUM OF 72 HOURS IN ADVANCE OF BEGINNING WORK.
- THE ENGINEER SHALL CONTACT DON CHIARUGI, THE TRAFFIC FIELD ENGINEER AT (847) 741-9857 A MINIMUM OF TWO (2) WEEKS PRIOR TO THE PLACEMENT OF PERMANENT PAVEMENT MARKINGS.
- THE CONTRACTOR SHALL BE REQUIRED TO PROVIDE ACCESS TO ABUTTING PROPERTY AT ALL TIMES DURING THE CONSTRUCTION OF THIS PROJECT.
- DO NOT SCALE PLANS FOR CONSTRUCTION DIMENSIONS.
- DOUBLE LANE MARKERS ARE TO BE USED AS SHOWN ON THE DISTRICT ONE DETAIL "TYPICAL APPLICATIONS - RAISED REFLECTIVE PAVEMENT MARKERS (SNOW-PLOW RESISTANT)" SHOWN ON THE PLANS.
- WHEN MILLED PAVEMENT IS OPEN TO TRAFFIC THE MAXIMUM GRADE DIFFERENTIAL BETWEEN PASSES OF THE MILLING MACHINE SHALL NOT EXCEED 1 1/2 INCHES WHERE THE SPEED LIMIT IS 45 MPH OR LESS AND 1 INCH WHERE THE SPEED LIMIT IS GREATER THAN 45 MPH. WITH WRITTEN APPROVAL FROM THE ENGINEER, A MAXIMUM GRADE DIFFERENTIAL OF 3 INCHES MAY BE ALLOWED IF THE EDGE OF THE MILLING IS SLOPED A MINIMUM 1:3 (V:H).
- BUTT JOINTS WILL BE INSTALLED AT THE ENDS OF ALL RESURFACING (WHERE RESURFACING MEETS EXISTING PAVEMENT), IN ACCORDANCE WITH THE "BUTT JOINT AND HOT-MIX ASPHALT TAPER DETAILS" SHEET INCLUDED IN THE PLANS UNLESS OTHERWISE SPECIFIED.
- PAVEMENT MARKING TAPE, TYPE III SHALL BE USED FOR SHORT TERM PAVEMENT MARKINGS ON ALL FINAL SURFACES. THE COST OF THE PAVEMENT MARKING TAPE, TYPE III AND IT'S REMOVAL SHALL BE INCLUDED IN THE COST OF SHORT TERM PAVEMENT MARKING.
- THE CONTRACTOR SHALL PLACE PROPOSED PAVEMENT MARKINGS IN ACCORDANCE WITH DISTRICT 1 TYPICAL PAVEMENT MARKINGS DETAIL (TC-13).
- THE RESIDENT ENGINEER AND CONTRACTOR SHALL VERIFY ALL EXISTING PAVEMENT MARKING PRIOR TO THE PROJECT STARTING. IF A DISCREPANCIES OCCURS BETWEEN EXISTING PAVEMENT MARKINGS AND THE PROPOSED PAVEMENT MARKINGS, THE RESIDENT ENGINEER SHALL CONTACT THE BUREAU OF TRAFFIC OPERATIONS.

FILE NAME = P:\2009\ME\09006.Var\Var-Phil\CADD\W021_US20\Shets\02-Index_Notes.dgn
 USER = JLD
 DATE = 6/1/2011
 MILLENNIA PROFESSIONAL SERVICES



200 22ND Street, Suite 215, Lombard, IL 60148
 630.705.0110 voice, 630.829.2560 fax
 www.mps-ill.com
MILLENNIA PROFESSIONAL SERVICES

DESIGNED -	CJD	REVISED -	Rev. 6-6-11
DRAWN -	CJD	REVISED -	
CHECKED -	TVN	REVISED -	
DATE -	6/1/2011	REVISED -	

STATE OF ILLINOIS
DEPARTMENT OF TRANSPORTATION

US ROUTE 20 (LAKE STREET)
RANDALL RD TO SHALES PARKWAY
 SCALE: N/A

INDEX OF SHEETS, HIGHWAY
STANDARDS, GENERAL NOTES,
AND COMMITMENTS

F.A.P. / R.T.E.	SECTION	COUNTY	TOTAL SHEETS	SHEET NO.
345	BR-1-RS-4	KANE/COOK	124	2
FED. ROAD DIST. NO. 1 ILLINOIS FED. AID PROJECT			CONTRACT NO. 60M46	

P:\2009\ME\09006.Var\Var-Phil\CADD\W021_US20\Shets\02-Index_Notes.dgn

SUMMARY OF QUANTITIES			TOTAL QUANTITY	CONSTRUCTION TYPE CODE									
				URBAN		KANE CO.		COOK CO.		KANE CO.			
CODE NO.	ITEM DESCRIPTION	UNIT		KANE CO. ROADWAY	COOK CO. ROADWAY	US RTE 20 OVER FOX RIVER	US RTE 20 OVER RAYMOND ST	US RTE 20 OVER ST CHARLES ST	US RTE 20 OVER IL RTE 25	US RTE 20 OVER POPLAR CREEK	US RTE 20 OVER US BUS US 20	IL RTE 31 OVER US RTE 20	FA 426 OVER WB US RTE 20
				0005	0005	045-0004	045-0005	045-0006	045-0007	016-0217	016-0218	045-0017	045-0008
70400100	TEMPORARY CONCRETE BARRIER	FOOT	4857	3643	594	-	-	-	-	-	-	-	620
70400200	RELOCATE TEMPORARY CONCRETE BARRIER	FOOT	4237	3643	594	-	-	-	-	-	-	-	-
78000100	THERMOPLASTIC PAVEMENT MARKING - LETTERS AND SYMBOLS	SO FT	110	110	-	-	-	-	-	-	-	-	-
78000200	THERMOPLASTIC PAVEMENT MARKING - LINE 4"	FOOT	155138	127298	27840	-	-	-	-	-	-	-	-
78000400	THERMOPLASTIC PAVEMENT MARKING - LINE 6"	FOOT	600	600	-	-	-	-	-	-	-	-	-
78000500	THERMOPLASTIC PAVEMENT MARKING - LINE 8"	FOOT	25710	23862	1848	-	-	-	-	-	-	-	-
78000600	THERMOPLASTIC PAVEMENT MARKING - LINE 12"	FOOT	6360	6150	210	-	-	-	-	-	-	-	-
78000650	THERMOPLASTIC PAVEMENT MARKING - LINE 24"	FOOT	240	240	-	-	-	-	-	-	-	-	-
78008210	POLYUREA PAVEMENT MARKING TYPE I - LINE 4"	FOOT	7189	5603	1116	-	-	-	-	-	-	-	470
78100100	RAISED REFLECTIVE PAVEMENT MARKER	EACH	1657	1312	345	-	-	-	-	-	-	-	-
78100105	RAISED REFLECTIVE PAVEMENT MARKER(BRIDGE)	EACH	107	80	22	-	-	-	-	-	-	-	5
78200530	BARRIER WALL MARKERS, TYPE C	EACH	743	508	137	-	-	-	-	-	-	-	98
78300100	PAVEMENT MARKING REMOVAL	SQ FT	2290	2290	356	-	-	-	-	-	-	-	-
78300200	RAISED REFLECTIVE PAVEMENT MARKER REMOVAL	EACH	1713	1352	356	-	-	-	-	-	-	-	5
88600600	DETECTOR LOOP REPLACEMENT	FOOT	2218	2218	-	-	-	-	-	-	-	-	-
X2020110	GRADING AND SHAPING SHOULDERS	UNIT	966	751	215	-	-	-	-	-	-	-	-
70012102	CONCRETE BRIDGE DECK SCARIFICATION (3/8 INCH)	SO YD	530	-	-	-	-	-	-	-	-	-	530
X0320882	GUTTERS TO BE CLEANED	FOOT	70	-	-	70	-	-	-	-	-	-	-
X0322215	CLEANING BRIDGE SCUPPERS AND DOWNSPOUTS	EACH	4	-	-	-	-	-	-	4	-	-	-
X0322944	BRIDGE DECK THIN POLYMER OVERLAY 3/8"	SO YD	530	-	-	-	-	-	-	-	-	-	530
40600895	CONSTRUCT ^{ING} TEST STRIP	EACH	1	0.8	0.2	-	-	-	-	-	-	-	-
X0325490	FURNISH AND INSTALL ACCESS DOOR	EACH	1	-	-	1	-	-	-	-	-	-	-
X0325983	BRIDGE DECK FLY ASH OR GGBF SLAG CONCRETE OVERLAY, 2 1/4"	SO YD	362	-	-	-	-	-	-	-	-	-	362
X0326331	CLEANING AND PAINTING BEARINGS	SO YD	15	-	-	-	-	-	-	-	-	-	15
X0326394	FLOOR DRAINS TO BE CLEANED	EACH	30	-	-	-	8	8	8	-	6	-	-
X4400100	PORTLAND CEMENT CONCRETE SURFACE REMOVAL VARIABLE DEPTH	SO YD	2809	2809	-	-	-	-	-	-	-	-	-
X40603500	PRELIMINARY TEST STRIP	EACH	1	0.75	0.25	-	-	-	-	-	-	-	-
X4060826	POLYMERIZED LEVELING BINDER (MACHINE METHOD), IL-4.75, N50	TON	15954	11335	4619	-	-	-	-	-	-	-	-
X55039700	STORM SEWERS TO BE CLEANED	FOOT	1152	1008	144	-	-	-	-	-	-	-	-
X60300310	FRAMES AND LIDS TO BE ADJUSTED (SPECIAL)	EACH	10	10	-	-	-	-	-	-	-	-	-
X0640200	TRAFFIC BARRIER TERMINAL, SPECIAL	EACH	1	-	-	-	-	-	-	-	1	-	-
X7030030	WET REFLECTIVE TEMPORARY TAPE, TYPE III, 4 INCH	FOOT	5200	-	-	-	-	-	-	-	-	-	5200
Z0001495	BRIDGE APPROACH SHOULDER REMOVAL	SO YD	20	-	-	-	-	-	-	-	-	-	20
Z0001899	JACK AND REMOVE EXISTING BEARINGS	EACH	15	-	-	-	-	-	-	-	-	-	15

* SPECIALTY ITEM

Rev. 6-6-11

Rev.

FILE NAME = P:\2009\ME09086_Ver-Yar_Pht\CADD\W021_US20_Shts\03-500sht-ht-US20.dgn
 PLOT SCALE = 1:1000 / IN.
 USER NAME = Millennium Professional Services



200 22ND Street, Suite 216, Lombard, IL 60148
 630.785.0110 voice, 630.839.2566 fax
 WWW.MPS-IL.COM
MILLENNIA PROFESSIONAL SERVICES

DESIGNED - TVN	REVISED -
DRAWN - TVN	REVISED -
CHECKED - RPD	REVISED -
DATE - 4/5/2011	REVISED -

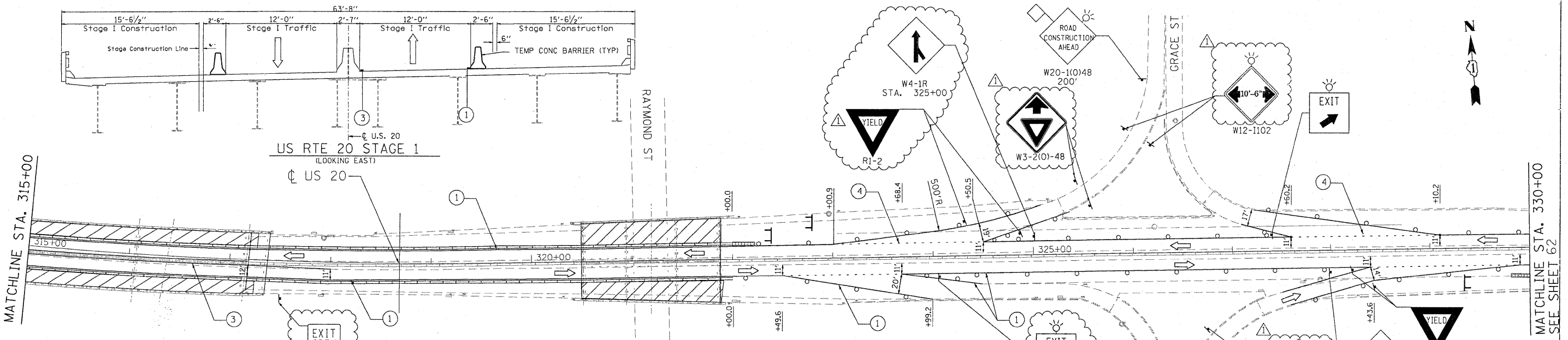
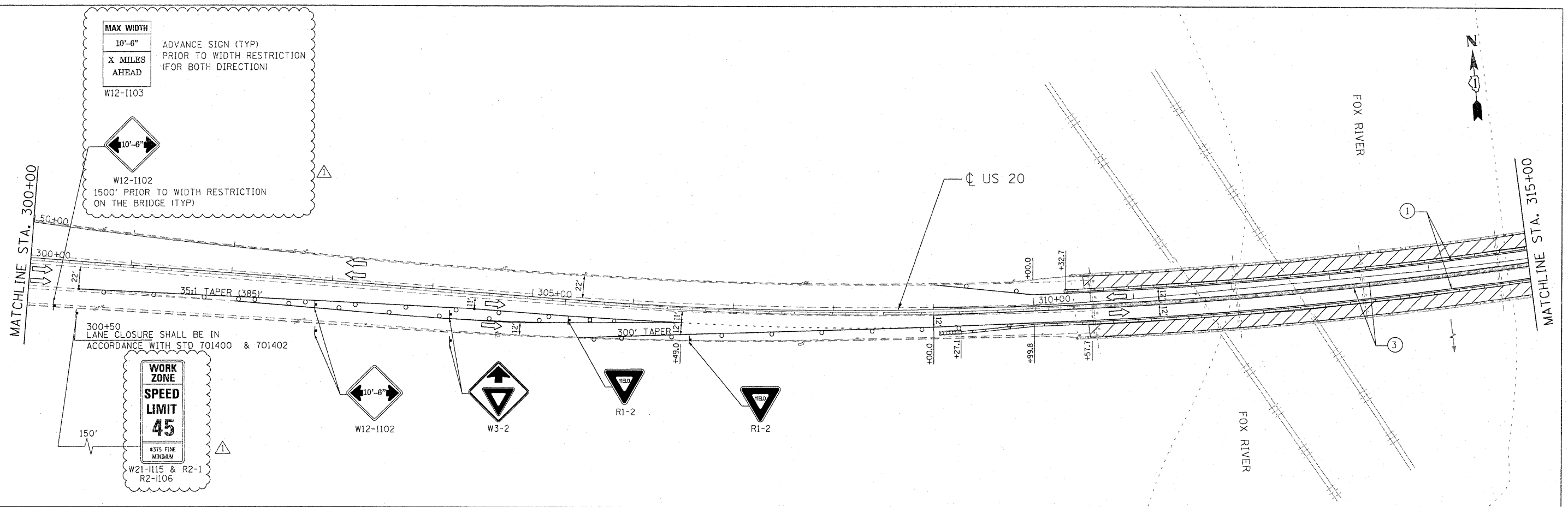
**STATE OF ILLINOIS
 DEPARTMENT OF TRANSPORTATION**

**U.S. ROUTE 20
 EAST OF PLANK ROAD TO WELD ROAD**

SUMMARY OF QUANTITIES

F.A.P. RTE. 345	SECTION BWRS-2	COUNTY KANE	TOTAL SHEETS 124	SHEET NO. 5
CONTRACT NO. 600746				

FED. ROAD DIST. NO. 1 ILLINOIS FED. AID PROJECT
 P:\2009\ME09086_Ver-Yar_Pht\CADD\W021_US20_Shts\03-500sht-ht-US20.dgn



- ① PAVEMENT MARKING TAPE, TYPE III 4", SOLID WHITE LINE (TYP) (70300520)
- ② PAVEMENT MARKING TAPE, TYPE III 4", SKIP-DASH WHITE LINE, 25' SKIP, 25' DASH (TYP) (70300520)
- ③ PAVEMENT MARKING TAPE, TYPE III 4", SOLID YELLOW LINE (TYP) (70300520)
- ④ PAVEMENT MARKING TAPE, TYPE III 4", SKIP-DASH WHITE LINE, 6' SKIP, 2' DASH (70300520)

LEGEND

- TYPE II BARRICADES OR DRUMS WITH STEADY BURNING LIGHTS @ 50 FT CENTERS ALONG ROADWAY (TANGENT) AND 25 FT CENTERS ALONG TAPERS.
- ⊥ TYPE III BARRICADES WITH STEADY BURNING LIGHTS
- ▨ WORK ZONE
- ▩ IMPACT ATTENUATOR

TYPICAL SIGN FOR RAMP EXIT

FILE NAME: P:\2009\MEP\0206_Ver\PHI\CADD\W21.US20\Sheet\160M46-MOT-ST11.dgn
 PLOT SCALE: 50.0000 / 1" = 100.0000'
 PROJECT: Millennium Professional Services 6-2-2.ctb

200 22ND Street, Suite 216, Lombard, IL 60148
 630.705.0110 voice, 630.839.2556 fax
 www.mps-il.com
MILLENNIA PROFESSIONAL SERVICES

DESIGNED - CJD	REVISED - Rev. 6-16-11
DRAWN - CJD	REVISED -
CHECKED - TVN	REVISED -
DATE - 6/1/2011	REVISED -

STATE OF ILLINOIS
DEPARTMENT OF TRANSPORTATION

US ROUTE 20 (LAKE STREET)
RANDALL RD TO SHALES PARKWAY

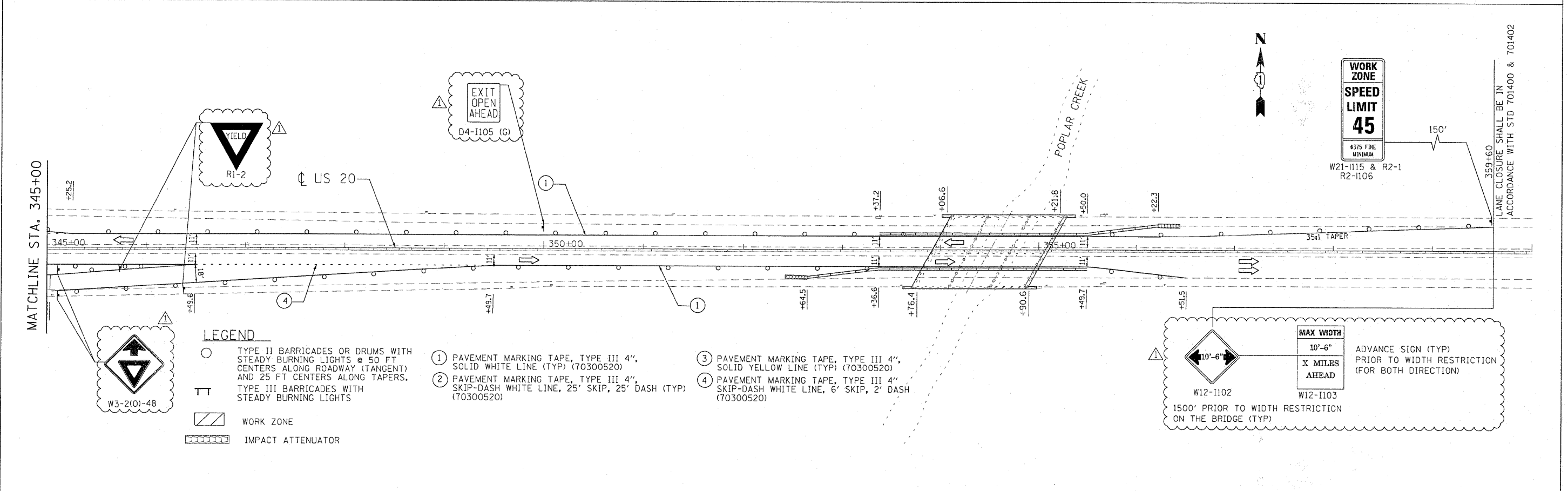
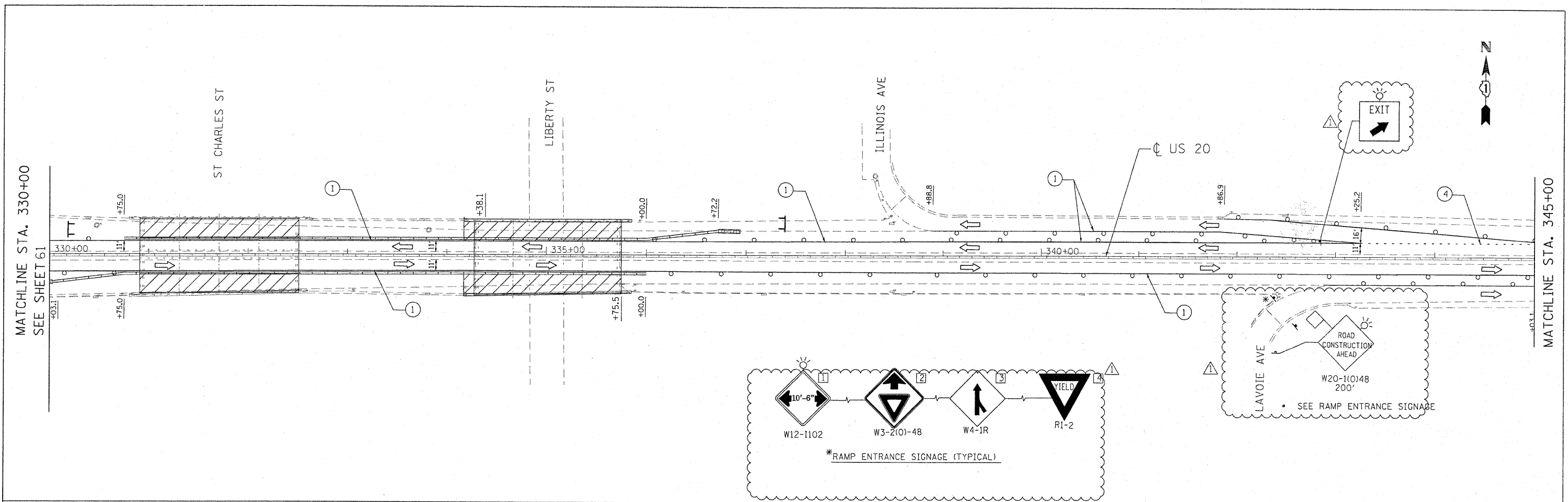
SUGGESTED STAGES OF CONSTRUCTION AND TRAFFIC CONTROL
 STAGE I

SCALE: SHEET NO. OF SHEETS STA. TO STA.

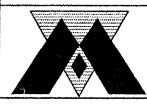
F.A.P. RTE. 345	SECTION BR-1-RS-4	COUNTY KANE/COOK	TOTAL SHEETS 124	SHEET NO. 61
CONTRACT NO. 60M46				
FED. ROAD DIST. NO. 1 ILLINOIS FED. AID PROJECT				


STG-11

MATCHLINE STA. 330+00 SEE SHEET 62



FILE NAME = P:\2009\ME090605_VerVar_Phi\CADD\W021.US20\Shes\0160M46-MOT-ST12.dgn
 SCALE = 50.0000 / 1 IN.
 USER NAME = Millennium Professional Services 6-2-2011


MILLENNIA PROFESSIONAL SERVICES
 200 22ND Street, Suite 216, Lombard, IL 60148
 630.705.0110 voice, 630.839.2566 fax
 www.mps-il.com

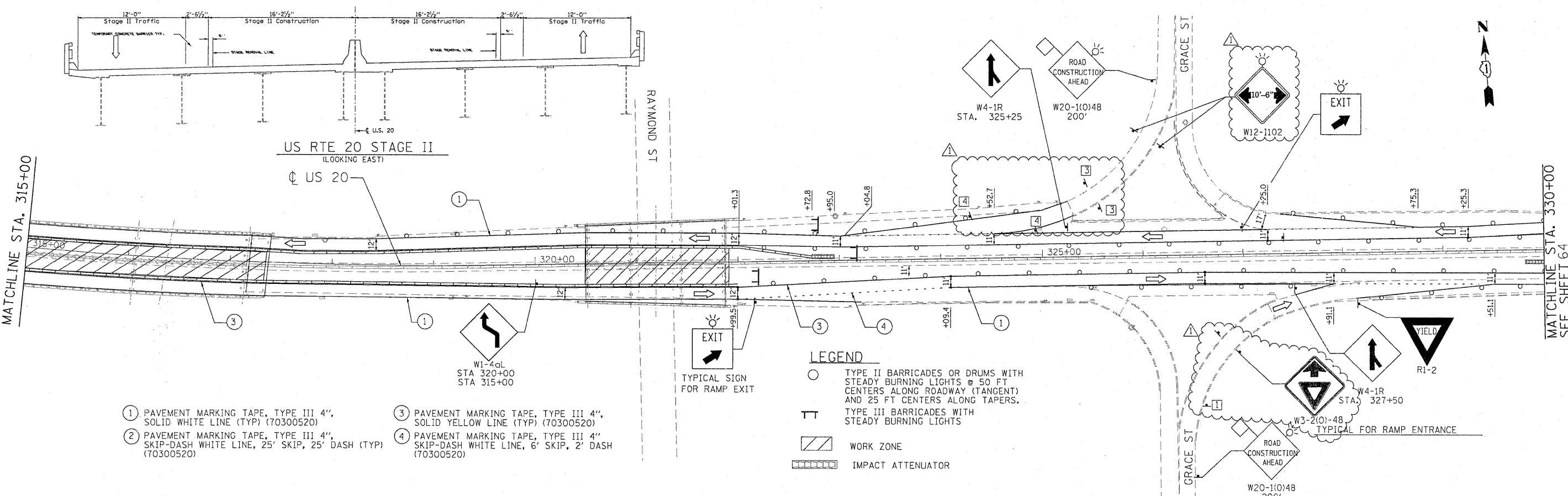
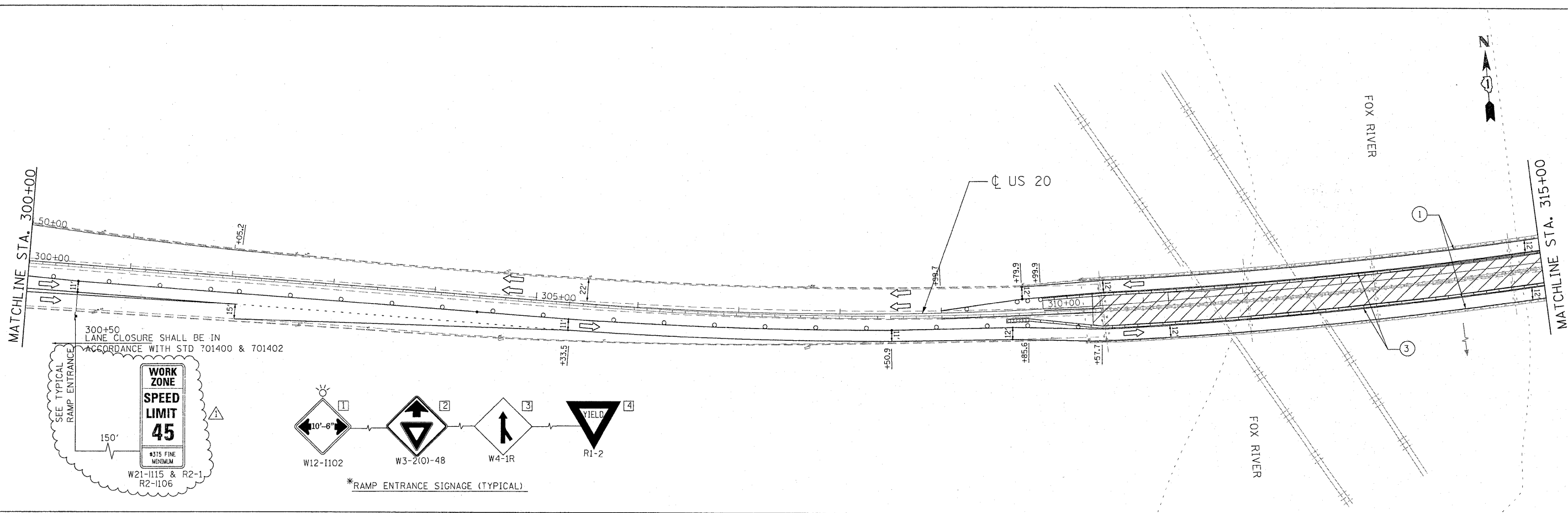
DESIGNED - CJD	REVISED -  Rev. 6-6-11
DRAWN - CJD	REVISED -
CHECKED - TVN	REVISED -
DATE - 6/1/2011	REVISED -

STATE OF ILLINOIS
DEPARTMENT OF TRANSPORTATION

US ROUTE 20 (LAKE STREET)
RANDALL RD TO SHALES PARKWAY
 SUGGESTED STAGES OF CONSTRUCTION AND TRAFFIC CONTROL
STAGE I

F.A.P. RTE. 345	SECTION BR-1-RS-4	COUNTY KANE/COOK	TOTAL SHEETS 124	SHEET NO. 62
CONTRACT NO. 60M46				
FED. ROAD DIST. NO. 1 ILLINOIS FED. AID PROJECT				

P:\2009\ME090605_VerVar_Phi\CADD\W021.US20\Shes\0160M46-MOT-ST12.dgn



- ① PAVEMENT MARKING TAPE, TYPE III 4", SOLID WHITE LINE (TYP) (70300520)
- ② PAVEMENT MARKING TAPE, TYPE III 4", SKIP-DASH WHITE LINE, 25' SKIP, 25' DASH (TYP) (70300520)
- ③ PAVEMENT MARKING TAPE, TYPE III 4", SOLID YELLOW LINE (TYP) (70300520)
- ④ PAVEMENT MARKING TAPE, TYPE III 4", SKIP-DASH WHITE LINE, 6' SKIP, 2' DASH (70300520)

- LEGEND**
- TYPE II BARRICADES OR DRUMS WITH STEADY BURNING LIGHTS @ 50 FT CENTERS ALONG ROADWAY (TANGENT) AND 25 FT CENTERS ALONG TAPERS.
 - TT TYPE III BARRICADES WITH STEADY BURNING LIGHTS
 - ▨ WORK ZONE
 - ▩ IMPACT ATTENUATOR

FILE NAME: P:\2009\ME09006\Var-Var-Phil\CADD\W021\US20\Shas\0160M46-MOT-ST21.dgn
 USER: Phil
 DATE: 6-2-2011

MILLENNIA PROFESSIONAL SERVICES
 200 22ND Street, Suite 216, Lombard, IL 60148
 630.785.0110 voice, 630.839.2566 fax
 www.mps-ll.com

DESIGNED - CJD	REVISED - 1 Rev. 6-2-11
DRAWN - CJD	REVISED -
CHECKED - TVN	REVISED -
DATE - 6/1/2011	REVISED -

STATE OF ILLINOIS
DEPARTMENT OF TRANSPORTATION

US ROUTE 20 (LAKE STREET)
RANDALL RD TO SHALES PARKWAY

SUGGESTED STAGES OF CONSTRUCTION
AND TRAFFIC CONTROL
STAGE II

F.A.P. RTE. 345	SECTION BR-1-RS-4	COUNTY KANE/COOK	TOTAL SHEETS 124	SHEET NO. 63
FED. ROAD DIST. NO. 1 ILLINOIS FED. AID PROJECT				
CONTRACT NO. 60M46				

SCALE: SHEET NO. OF SHEETS STA. TO STA.

P:\2009\ME09006\Var-Var-Phil\CADD\W021\US20\Shas\0160M46-MOT-ST21.dgn

FILE NAME = P:\2009\ME09006_Var\Var_Plan\CADD\W021_US20\Shets\DI60M46-MDT-ST22.dgn
 PLOT SCALE = 50:0000 / 1" IN.
 USER NAME = Millennium Professional Services
 6-2-2011

MILLENNIA PROFESSIONAL SERVICES
 200 22ND Street, Suite 216, Lombard, IL 60148
 630.785.8110 voice, 630.839.2566 fax
 www.mps-il.com

DESIGNED - CJD	REVISED - <i>Rev. 6-6-11</i>
DRAWN - CJD	REVISED -
CHECKED - TVN	REVISED -
DATE - 6/1/2011	REVISED -

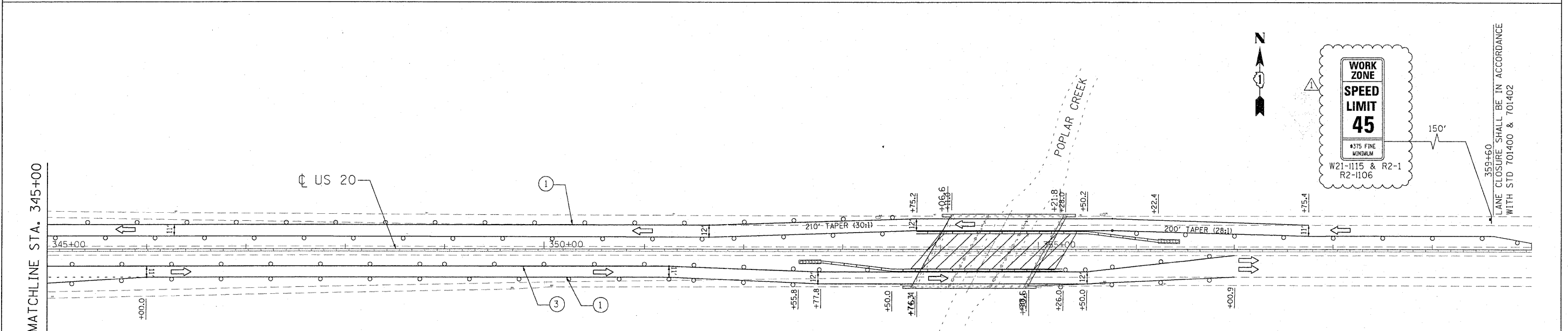
**STATE OF ILLINOIS
 DEPARTMENT OF TRANSPORTATION**

**US ROUTE 20 (LAKE STREET)
 RANDALL RD TO SHALES PARKWAY**

**SUGGESTED STAGES OF CONSTRUCTION
 AND TRAFFIC CONTROL
 STAGE II**

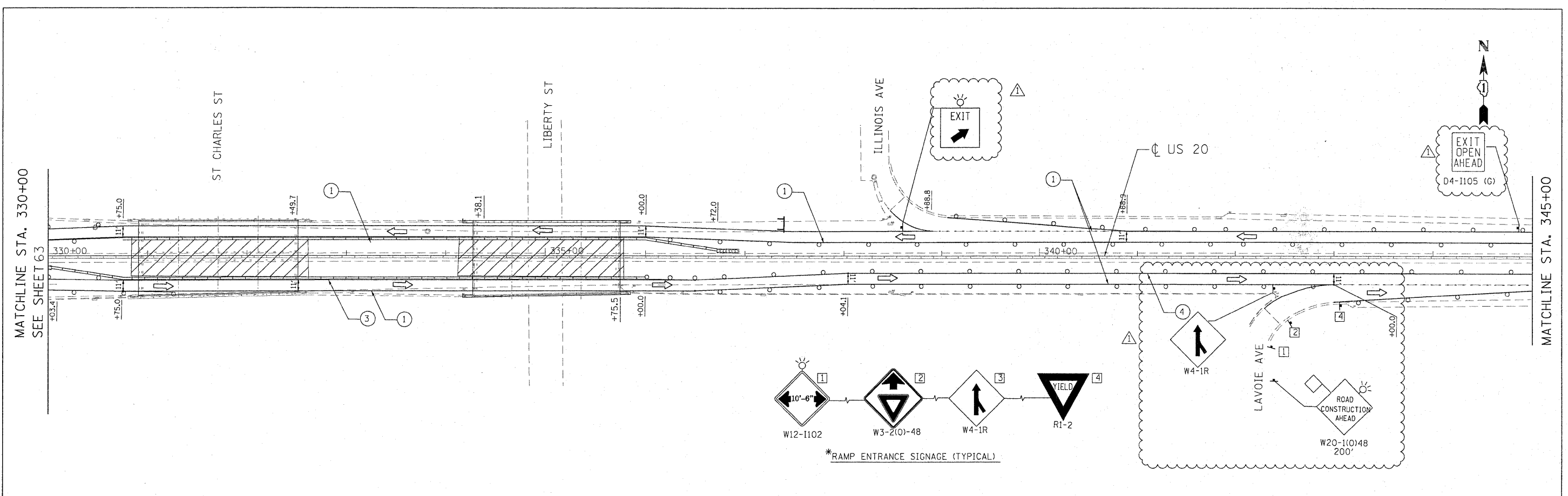
F.A.P. R/E.	SECTION	COUNTY	TOTAL SHEETS	SHEET NO.
345	8R-1-RS-4	KANE/COOK	124	64
CONTRACT NO. 60M46				

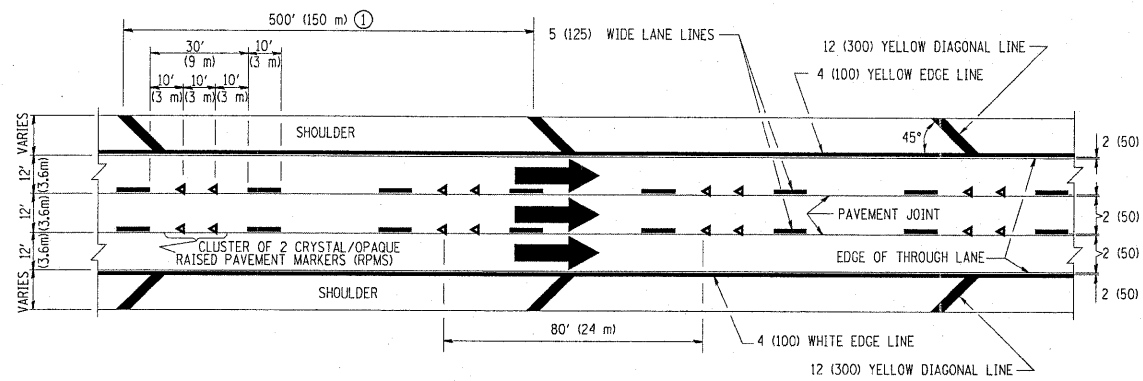
FED. ROAD DIST. NO. 1 ILLINOIS FED. AID PROJECT
 P:\2009\ME09006_Var\Var_Plan\CADD\W021_US20\Shets\DI60M46-MDT-ST22.dgn



LEGEND

- TYPE II BARRICADES OR DRUMS WITH STEADY BURNING LIGHTS @ 50 FT CENTERS ALONG ROADWAY (TANGENT) AND 25 FT CENTERS ALONG TAPERS.
- TT TYPE III BARRICADES WITH STEADY BURNING LIGHTS
- ▨ WORK ZONE
- ▭ IMPACT ATTENUATOR
- ① PAVEMENT MARKING TAPE, TYPE III 4", SOLID WHITE LINE (TYP) (70300520)
- ② PAVEMENT MARKING TAPE, TYPE III 4", SKIP-DASH WHITE LINE, 25' SKIP, 25' DASH (TYP) (70300520)
- ③ PAVEMENT MARKING TAPE, TYPE III 4", SOLID YELLOW LINE (TYP) (70300520)
- ④ PAVEMENT MARKING TAPE, TYPE III 4", SKIP-DASH WHITE LINE, 6' SKIP, 2' DASH (70300520)

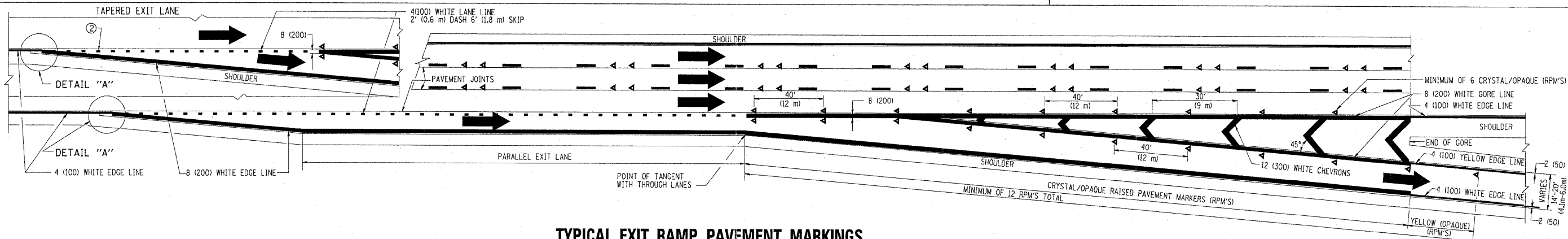




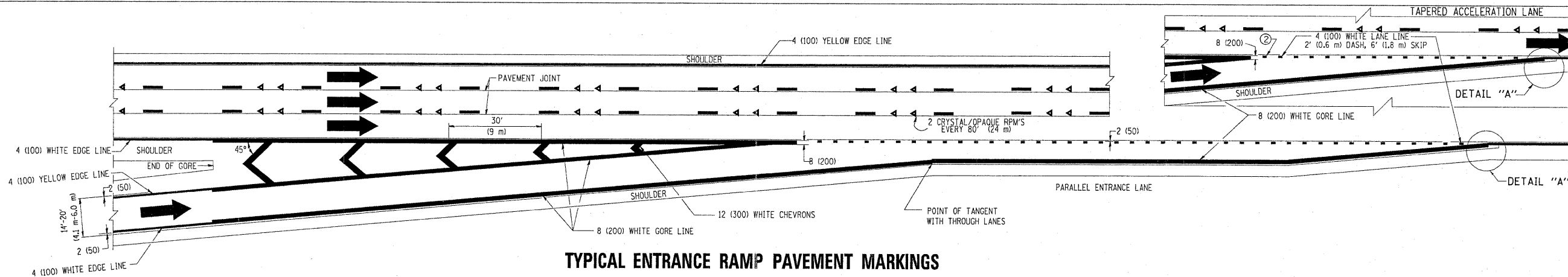
TYPICAL EDGE LINES & LANE LINES

PAVEMENT MARKING MATERIALS

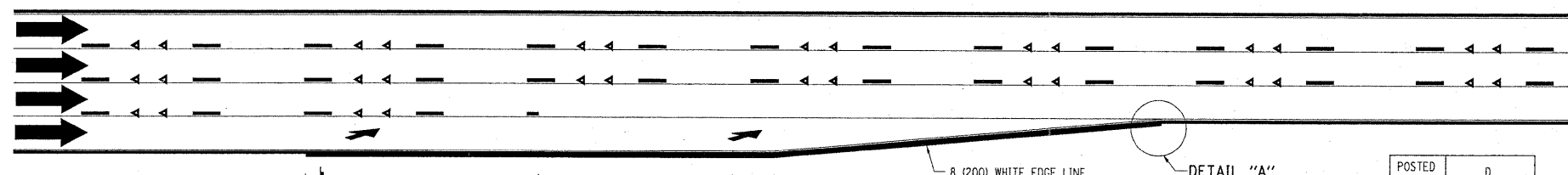
1. THERMO PLASTIC PAVEMENT MARKING LINE SHALL BE USED FOR THE EDGE LINES, GORE LINES, AND DIAGONAL LINES ON BITUMINOUS PAVEMENT ONLY.
2. PREFORMED PLASTIC TYPE B PAVEMENT MARKING LINE SHALL BE USED FOR ALL LANE LINES ON BITUMINOUS PAVEMENT.
3. POLYUREA PAVEMENT MARKING SHALL BE USED FOR ALL MARKINGS ON PCC.



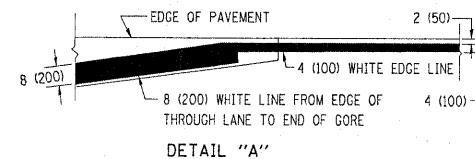
TYPICAL EXIT RAMP PAVEMENT MARKINGS



TYPICAL ENTRANCE RAMP PAVEMENT MARKINGS



LANE REDUCTION PAVEMENT MARKINGS



NOTES:

- ① THE DIAGONAL LINES SHALL BE SPACED AT 40' (12 m) C-C ACROSS ALL STRUCTURES WHICH ARE 500' (150 m) OR LESS IN LENGTH. THE DIAGONAL LINES ARE NOT REQUIRED ON SHOULDERS WHICH ARE 6' (1.8 m) OR LESS IN WIDTH.
- ② 4" (2' DASH, 6' SKIP) MARKING ON TAPERED ENTRANCE AND EXIT RAMP SHALL BE OMITTED ON TANGENT SECTIONS.

POSTED SPEED LIMIT	D DISTANCE
45 MPH	750' (230 m)
55 MPH	950' (290 m)
65 MPH	1200' (365 m)

FILE NAME =
c:\pwork\pwork\101\LEISA\101108315\1012.dwg

USER NAME = laysa
PLOT SCALE = 50.000 1/ IN.
PLOT DATE = 1/22/2010

DESIGNED - D.W.S.
DRAWN -
CHECKED -
DATE - 01-90

REVISED - D.W.S. 07-96
REVISED - J.A.F. 02-06
REVISED - S.P.B. 01-07
REVISED - S.P.B. 01-10

**STATE OF ILLINOIS
DEPARTMENT OF TRANSPORTATION**

**MULTI-LANE FREEWAY
PAVEMENT MARKING DETAILS**

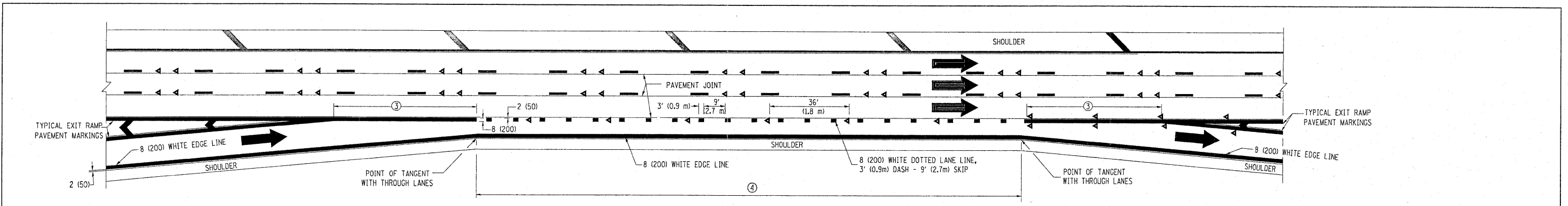
F.A.P. RITE.	SECTION	COUNTY	TOTAL SHEETS	SHEET NO.
345	8R-1-RS-4	KANE/COOK	124	118A
TC-12		CONTRACT NO. 60M46		
FED. ROAD DIST. NO. 1 ILLINOIS FED. AID PROJECT				

SCALE: NONE SHEET NO. 1 OF 2 SHEETS STA. TO STA.

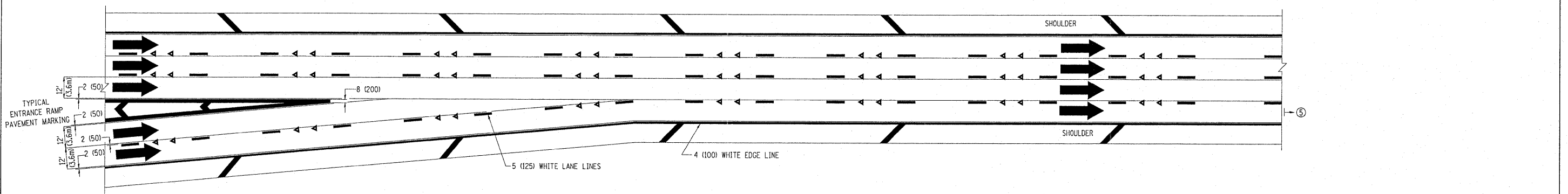
6-2-2011

Added Sheet 6-6-11

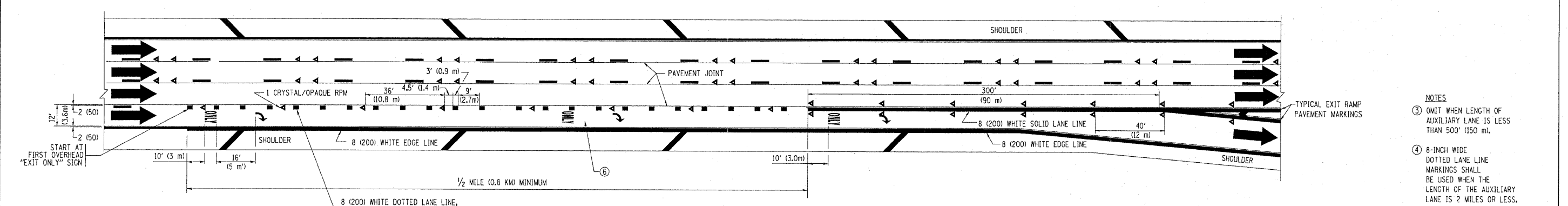




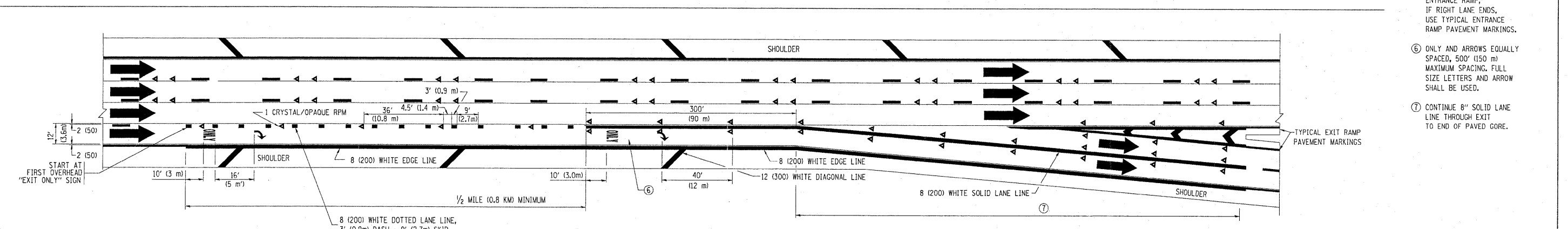
AUXILIARY LANE MARKINGS



TWO LANE ENTRANCE RAMP WITH MERGE MARKINGS



EXIT ONLY LANE MARKINGS



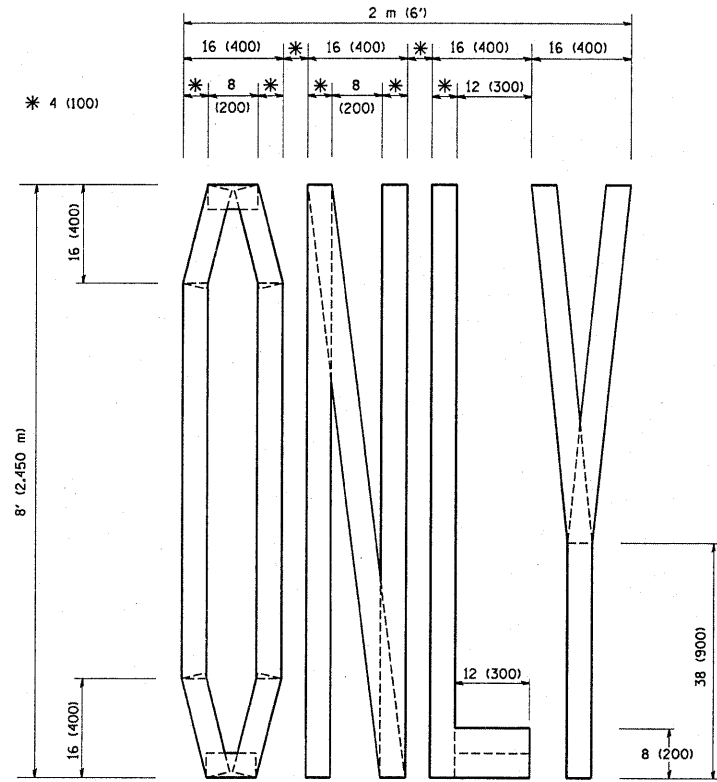
EXIT ONLY WITH OPTION LANE MARKINGS

- NOTES**
- ③ OMIT WHEN LENGTH OF AUXILIARY LANE IS LESS THAN 500' (150 m).
 - ④ 8-INCH WIDE DOTTED LANE LINE MARKINGS SHALL BE USED WHEN THE LENGTH OF THE AUXILIARY LANE IS 2 MILES OR LESS.
 - ⑤ FOR TWO-LANE ENTRANCE RAMP, IF RIGHT LANE ENDS, USE TYPICAL ENTRANCE RAMP PAVEMENT MARKINGS.
 - ⑥ ONLY AND ARROWS EQUALLY SPACED, 500' (150 m) MAXIMUM SPACING. FULL SIZE LETTERS AND ARROW SHALL BE USED.
 - ⑦ CONTINUE 8" SOLID LANE LINE THROUGH EXIT TO END OF PAVED GORE.

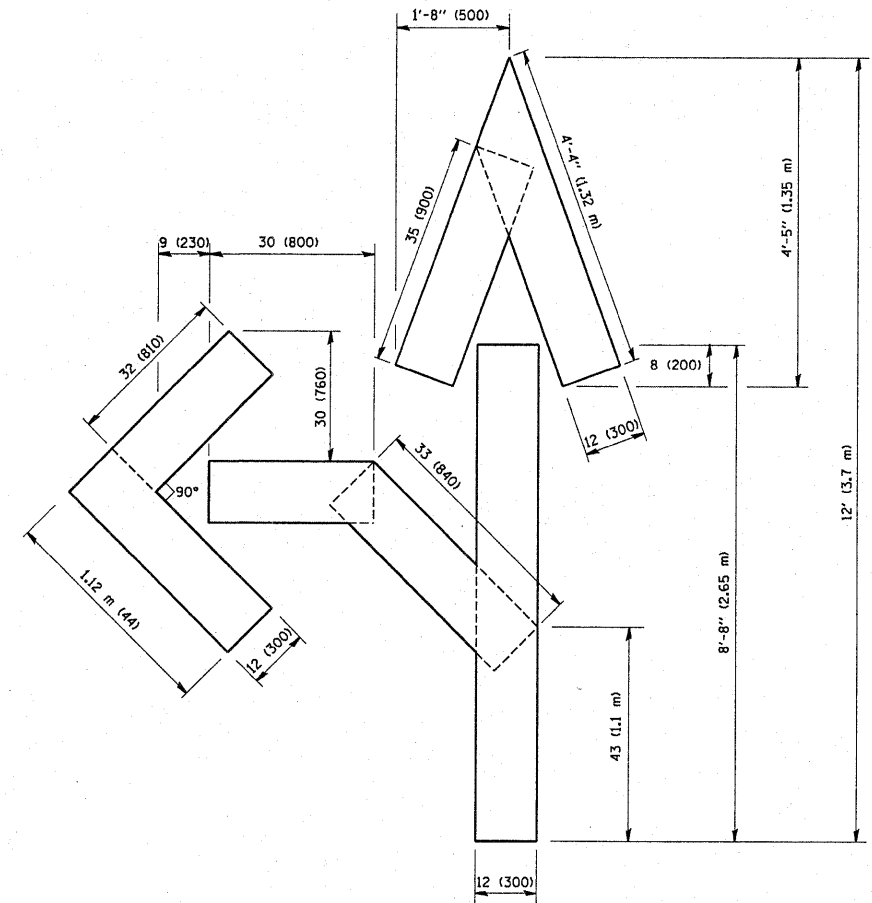
6-2-2011

Added Sheet 6-6-11

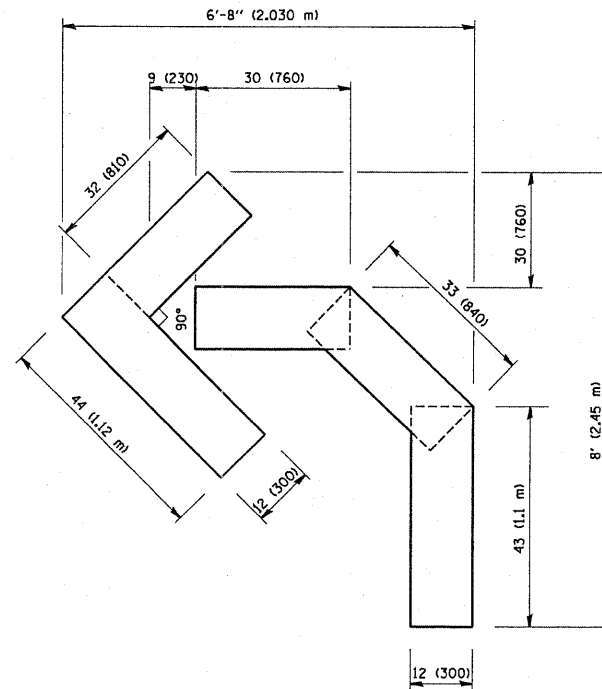
FILE NAME =	USER NAME = lsgsa	DESIGNED - D.W.S.	REVISED - D.W.S. 07-96	STATE OF ILLINOIS DEPARTMENT OF TRANSPORTATION	MULTI-LANE FREEWAY PAVEMENT MARKING DETAILS			F.A.R. RTE.	SECTION	COUNTY	TOTAL SHEETS	SHEET NO.	
oi:\pwork\pwidot\LEYSAD\0106315\to12.dgn		DRAWN -	REVISED - J.A.F. 02-06		SCALE: NONE	SHEET NO. 2 OF 2 SHEETS	STA.	TO STA.	345	BR-1-RS-4	KANE/COOK	124	118B
		CHECKED -	REVISED - S.P.B. 01-07					TC-12		CONTRACT NO. 60M46			
		DATE - 01-90	REVISED - S.P.B. 01-10					FED. ROAD DIST. NO. 1 ILLINOIS FED. AID PROJECT					



QUANTITY
 4 (100) LINE = 64.1 ft. (19.7 m)
 21.1 sq. ft. (1.97 sq. m)



QUANTITY
 4 (100) LINE = 82.5 ft. (25.3 m)
 27.5 sq. ft. (2.53 sq. m)



QUANTITY
 4 (100) LINE = 45.5 ft. (13.9 m)
 15.2 sq. ft. (1.39 sq. m)

6-2-2011

Added Sheet 6-6-11

All dimensions are in Inches (millimeters) unless otherwise shown.

FILE NAME = W:\d\statd\22x34\ta16.dgn	USER NAME = geglionbt	DESIGNED -	REVISED - T. RAMMACHER 06-05-96
		DRAWN -	REVISED - T. RAMMACHER 11-04-97
	PLOT SCALE = 50.0000' / IN.	CHECKED -	REVISED - T. RAMMACHER 03-02-98
	PLOT DATE = 1/4/2008	DATE - 09-18-94	REVISED - E. GOMEZ 08-28-00

STATE OF ILLINOIS
 DEPARTMENT OF TRANSPORTATION

PAVEMENT MARKING LETTERS AND SYMBOLS
 FOR TRAFFIC STAGING

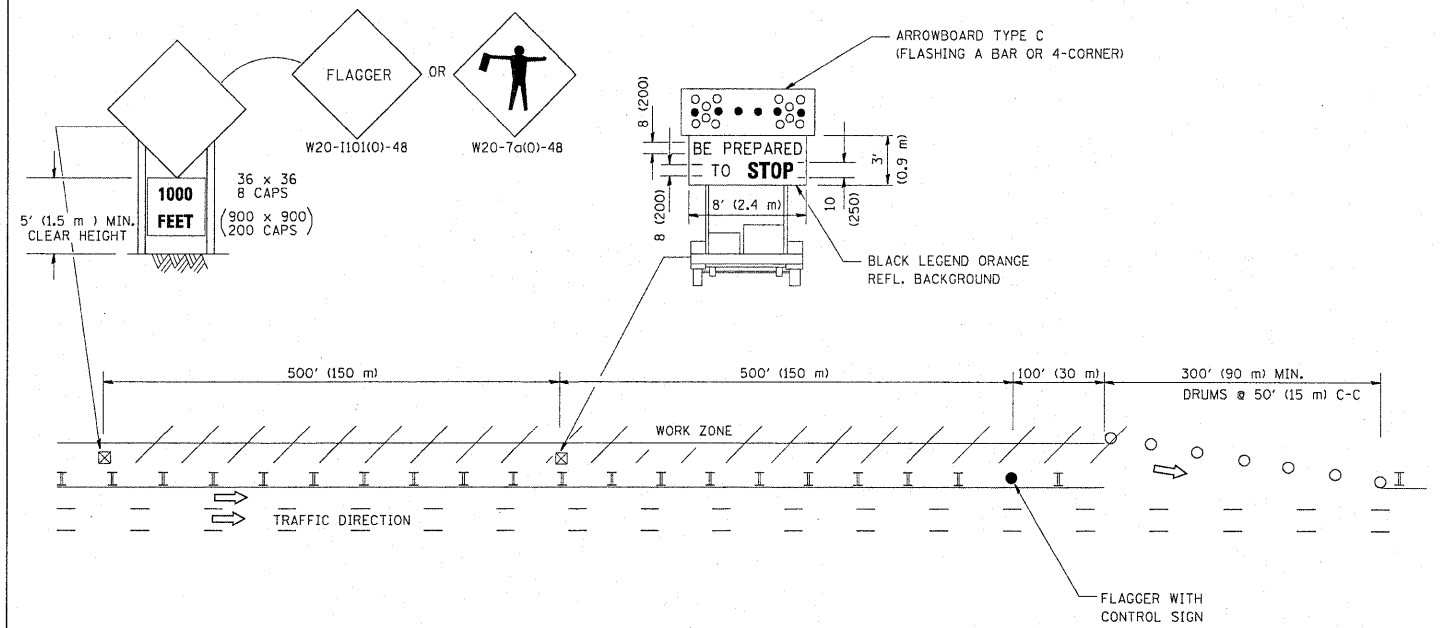
SCALE: NONE SHEET NO. 1 OF 1 SHEETS STA. TO STA.

F.A.P. RTE. 345	SECTION 8R-1-RS-4	COUNTY KANE/COOK	TOTAL SHEETS 124	SHEET NO. 121A
TC-16			CONTRACT NO. 60M46	
FED. ROAD DIST. NO. 1 ILLINOIS FED. AID PROJECT				

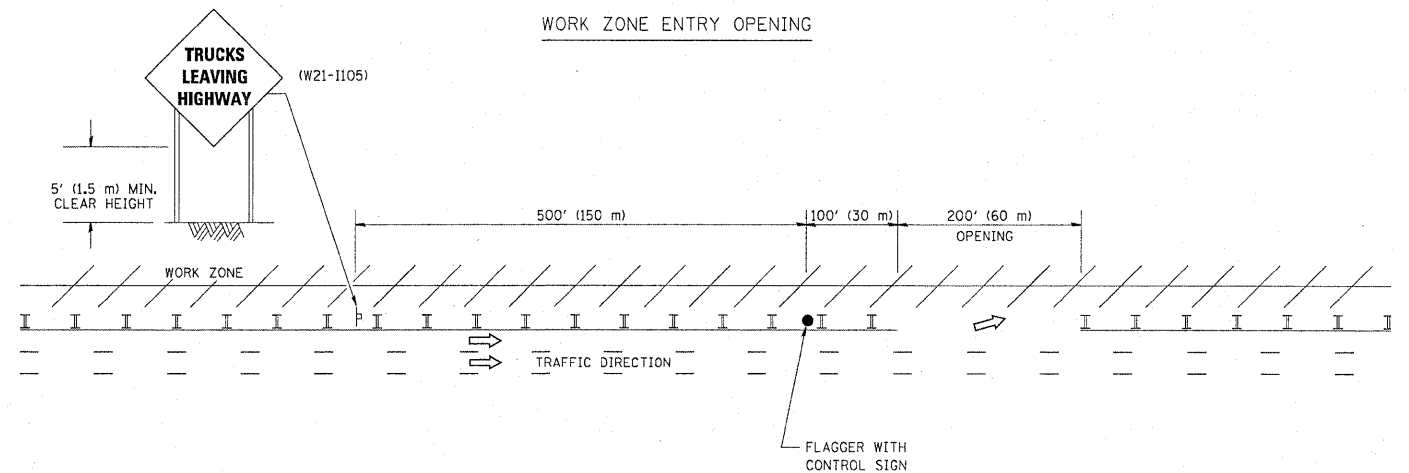
6-2-2011

SIGNING FOR FLAGGING OPERATIONS AT WORK ZONE OPENINGS

WORK ZONE EXIT OPENING



WORK ZONE ENTRY OPENING



NOTES:

1. THE ARROWBOARD, THE FLAGGER AHEAD SIGN AND THE TRUCKS LEAVING HIGHWAY SIGN SHALL BE REMOVED OR TURNED AWAY FROM TRAFFIC AND THE EXIT AND ENTRY OPENINGS SHALL BE CLOSED WHEN THE FLAGGING OPERATION CEASES. NON OPERATING EQUIPMENT SHALL COMPLY WITH ARTICLE 701.11
2. WORK ZONE EXIT OPENINGS SHOULD BE A MINIMUM OF ONE HALF MILE APART.
3. EXITING THE WORK ZONE AT ANY PLACE OTHER THAN AT A WORK ZONE EXIT OPENING WILL BE PROHIBITED.
4. ALL VEHICLES SHALL ENTER THE WORK ZONE AT ENTRY OPENINGS, USING THEIR TURN SIGNALS TO WARN MOTORISTS

ALL DIMENSIONS ARE IN INCHES (MILLIMETERS) UNLESS OTHERWISE SHOWN

Added Sheet 6-6-11

FILE NAME = W:\diststd\22x34\ts18.dgn	USER NAME = lsgss	DESIGNED -	REVISED - J.A.F. 04-03
		DRAWN -	REVISED - J.A.F. 02-06
	PLOT SCALE = 50.000' / IN.	CHECKED -	REVISED - S.P.B. 01-07
	PLOT DATE = 1/28/2010	DATE -	REVISED - S.P.B. 12-09

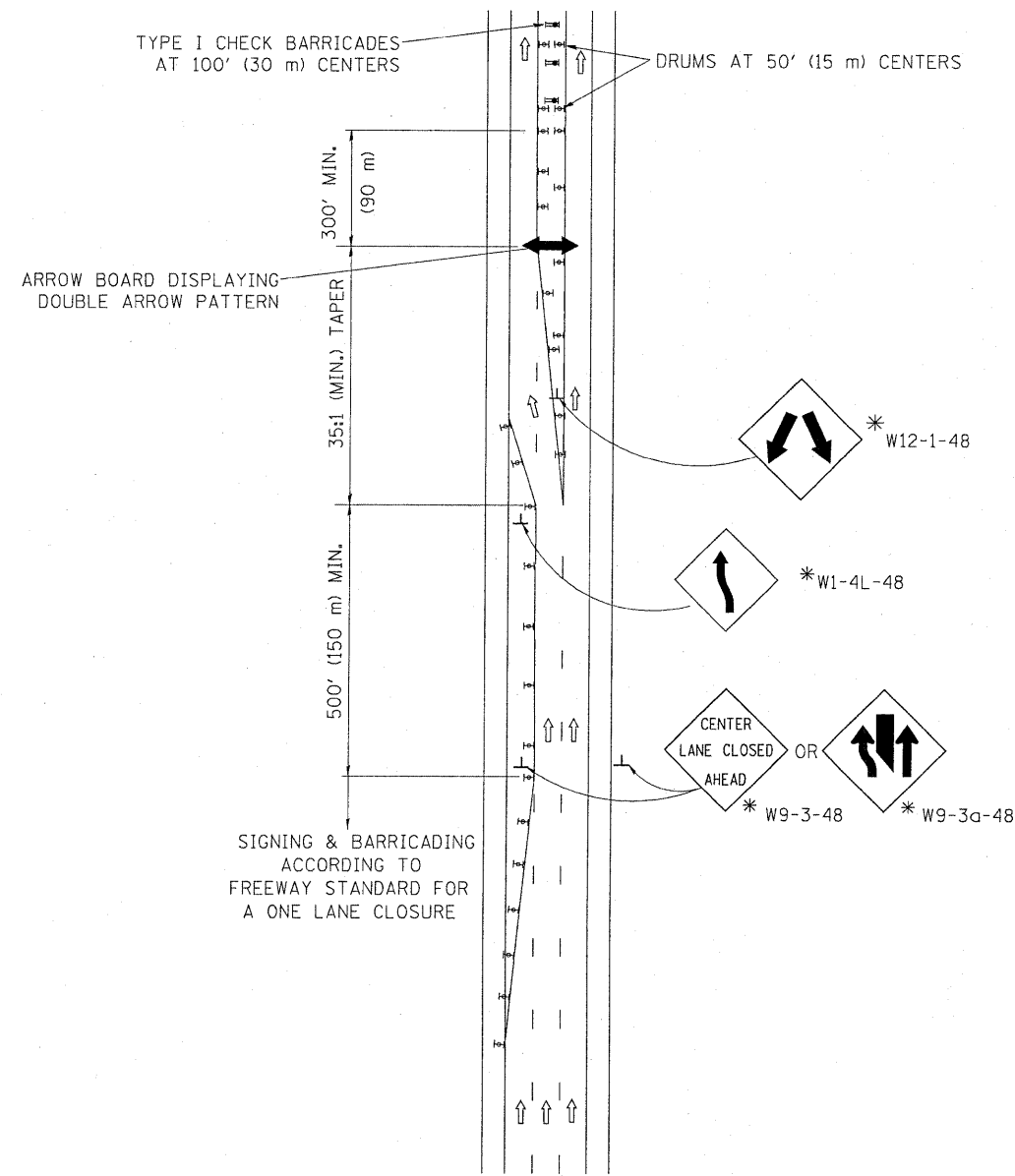
STATE OF ILLINOIS
DEPARTMENT OF TRANSPORTATION

SIGNING FOR FLAGGING OPERATIONS
AT WORK ZONE OPENINGS

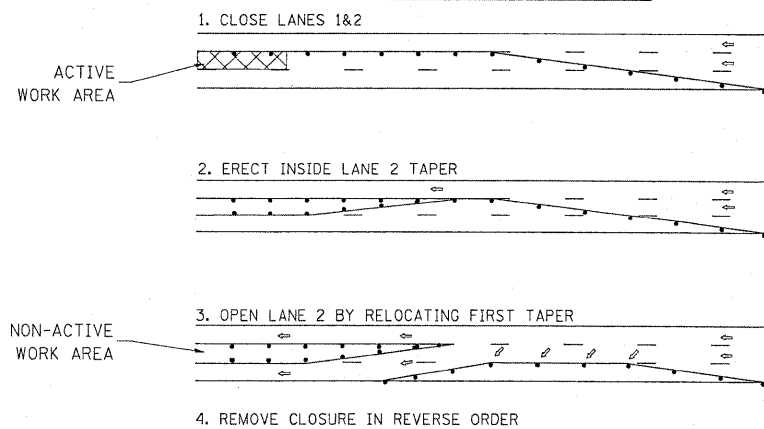
F.A.P. RTE. 345	SECTION 8R-1-RS-4	COUNTY KANE/COOK	TOTAL SHEETS 124	SHEET NO. 122A
TC-18		CONTRACT NO. 60M46		
FED. ROAD DIST. NO. 1 ILLINOIS FED. AID PROJECT				

SCALE: NONE SHEET NO. 1 OF 1 SHEETS STA. TO STA.

CENTER LANE CLOSURE



INSTALLATION SEQUENCE



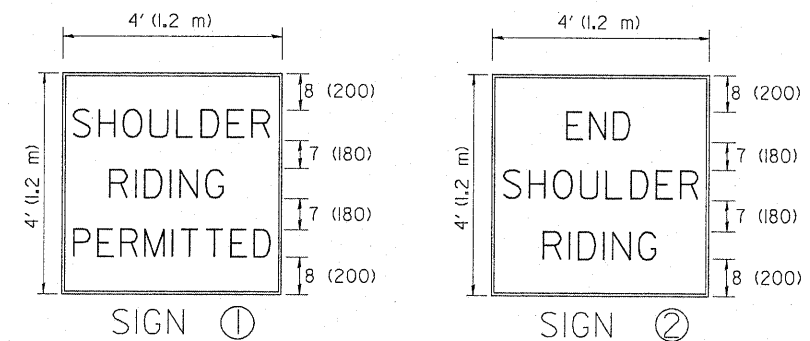
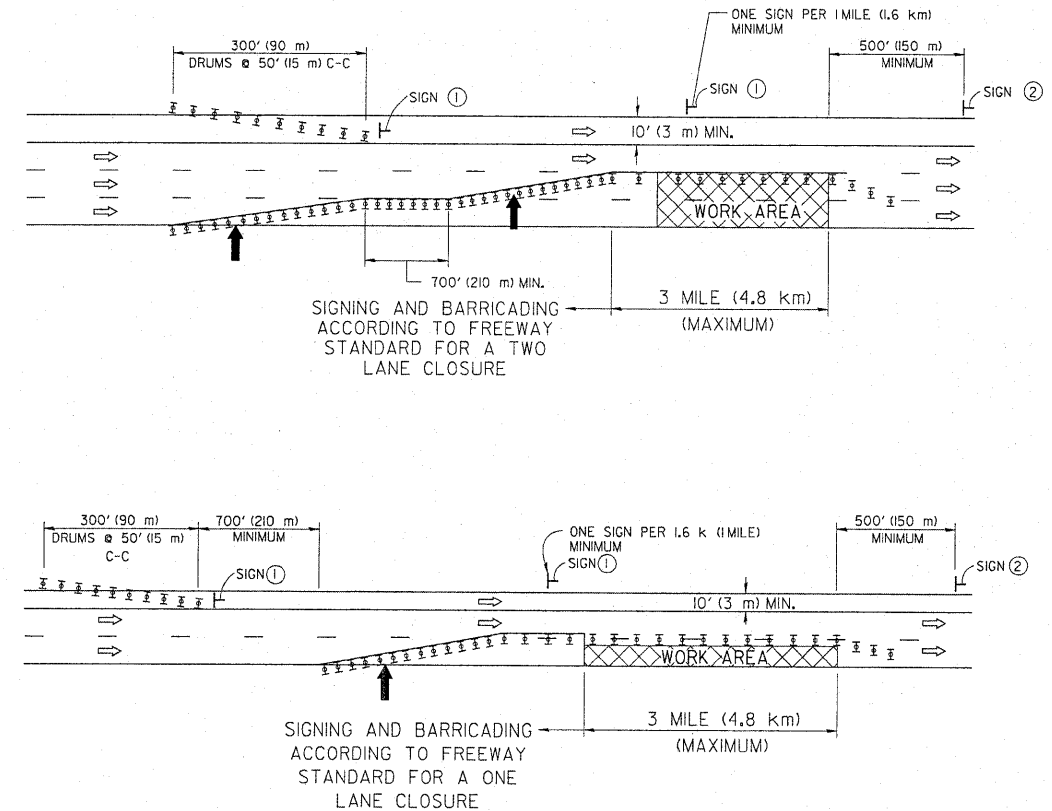
NOTES

- DRUMS WITH STEADY BURN LIGHTS SHALL BE USED AT 50' (15 m) CENTERS ON ALL TAPERS AND TANGENTS IN ADVANCE OF WORK AREA.
- CLOSURE SHALL BE USED ONLY FOR OPERATIONS LASTING 72 HOURS OR LESS.
- CENTER LANE CLOSURE CONFIGURATION IS NOT TO BE USED WITH WORKERS PRESENT.

Added Sheet 6-6-11

SHOULDER LANE

NOTE: CLOSURE SHALL BE USED ONLY FOR OPERATIONS LASTING 72 HOURS OR LESS.



6 (150) SERIES "C" LEGEND
BLACK LEGEND
WHITE REFLECT. BACKGROUND
1(25) BORDER

SYMBOLS

- ↑ DIRECTION OF TRAFFIC
- ➔ ARROWBOARD
- ▣ ACTIVE WORK AREA
- ⊥ SIGN ON PORTABLE OR PERMANENT SUPPORT *
- ⊥ TYPE II BARRICADE, OR DRUM WITH MONO-DIRECTIONAL STEADY BURN LIGHT

ALL DIMENSIONS ARE IN INCHES (MILLIMETERS) UNLESS OTHERWISE SHOWN

* ALL SIGNS SHALL BE MOUNTED AT A MINIMUM HEIGHT OF 5' (1.5 m).

6-2-2011

FILE NAME =	USER NAME = jeyso	DESIGNED -	REVISED - J.A.F. 04-03
W:\diststd\22x34\to25.dgn		DRAWN -	REVISED - S.P.B. 01-07
	PLOT SCALE = 50,000' / IN.	CHECKED -	REVISED - S.P.B. 12-09
	PLOT DATE = 1/25/2010	DATE -	REVISED -



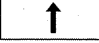


STATE OF ILLINOIS
DEPARTMENT OF TRANSPORTATION

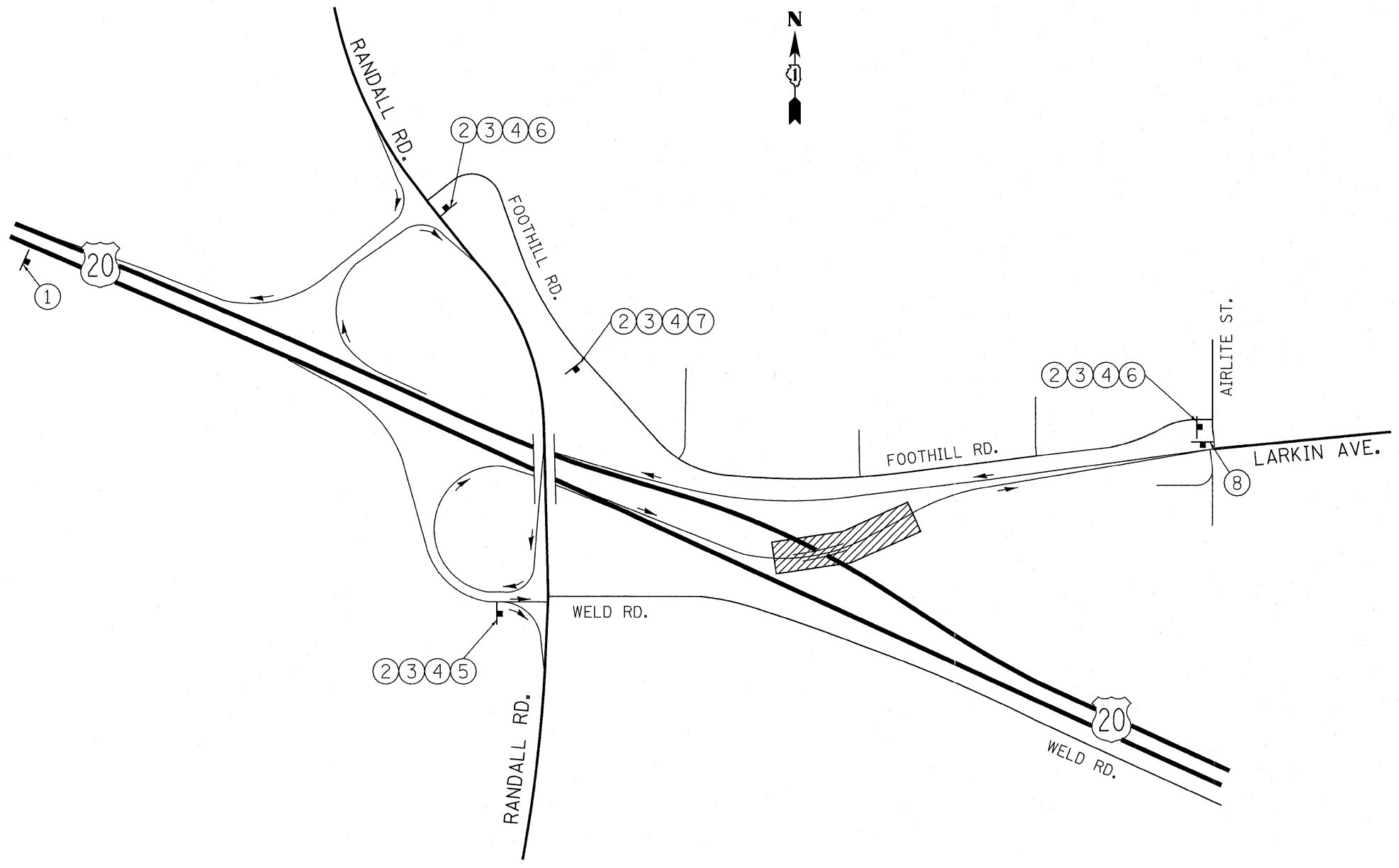
TRAFFIC CONTROL DETAILS FOR FREEWAY
CENTER LANE CLOSURE SHOULDER LANE

SCALE: NONE SHEET NO. 1 OF 1 SHEETS STA. TO STA.

F.A.R. RTE.	SECTION	COUNTY	TOTAL SHEETS	SHEET NO.
345	BR-1-RS-4	KANE/COOK	124	123A
TC-25		CONTRACT NO. 60M46		
FED. ROAD DIST. NO. 1 ILLINOIS FED. AID PROJECT				

DETOUR LEGEND

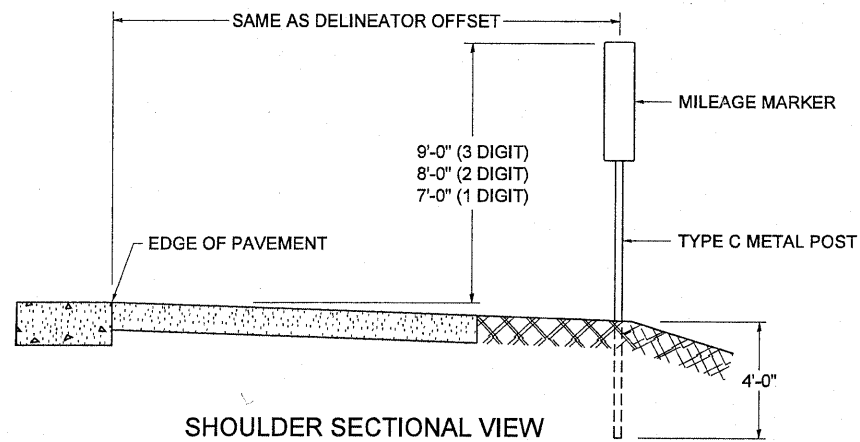
- ① LARKIN AVE RAMP CLOSED USE RANDALL RD B/O 10"
- ② DETOUR (M4-8-2412)
- ③ EAST (M3-2-2412)
- ④ LARKIN AVE B/O 4"
- ⑤  (M5-1L-2115)
- ⑥  (M5-1R-2115)
- ⑦  (M6-1L-2115)
- ⑧ END DETOUR (M4-8A-2418)
-  WORK AREA
-  SIGN PANEL



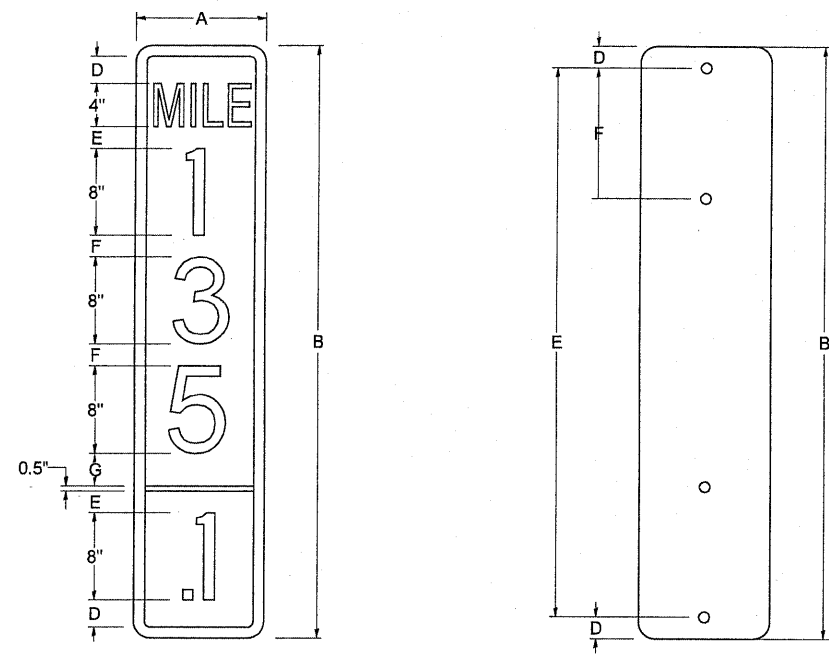
NOT TO SCALE

FILE NAME =	USER NAME = VelichkovVV	DESIGNED -	REVISED - <i>Rev. 6-6-11</i>	STATE OF ILLINOIS DEPARTMENT OF TRANSPORTATION	TEMPORARY DETOUR PLAN EB US 20 RAMP TO LARKIN AVE.				F.A.P. RTE. 345	SECTION 8R-1-RS-4	COUNTY KANE/COOK	TOTAL SHEETS 67	SHEET NO. 124
ct:\pw_work\pwidot\velichkovvv\d0251823\0	d-D133811-sh-t-plan.dgn	DRAWN -	REVISED -		SCALE: SHEET NO. OF SHEETS STA. TO STA.				CONTRACT NO. 60M46				
	PLOT SCALE = 50,0000' / IN.	CHECKED -	REVISED -		ILLINOIS FED. AID PROJECT								
	PLOT DATE = 6/2/2011	DATE -	REVISED -										

STANDARD DESIGN FOR MILE POST



SHOULDER SECTIONAL VIEW

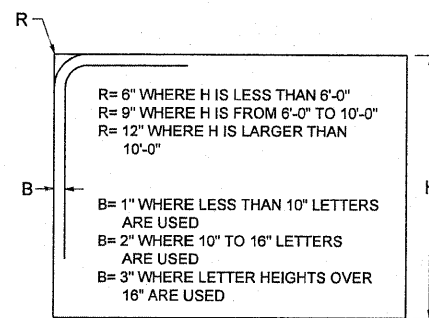


SIGN SIZE	DIMENSIONS							DIGIT
	A	B	C	D	E	F	G	
12 x 24	12.0	24.0	1.5	1.5	1.5	N/A	1.5	1
12 x 36	12.0	36.0	1.5	2.0	2.0	2.0	1.5	2
12 x 48	12.0	48.0	1.5	2.5	2.0	2.0	2.5	3

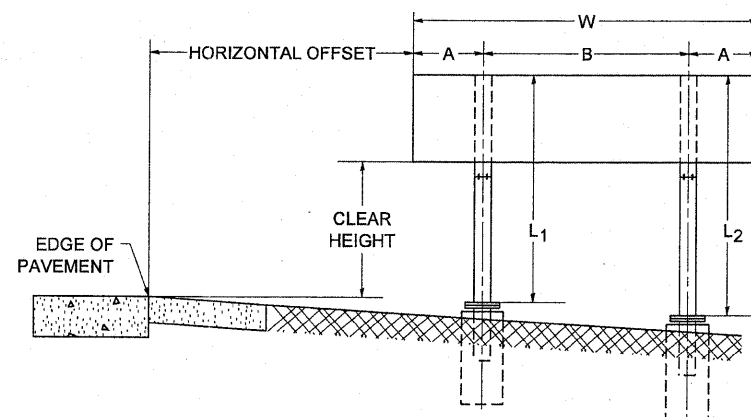
BLANK	A	B	C	D	E	F
B9-1224	12.0	24.0	1.5	2.0	20.0	N/A
B9-1236	12.0	36.0	1.5	2.0	32.0	12.0
B9-1248	12.0	48.0	1.5	2.0	44.0	12.0

SIGN SIZE	SERIES					BLANK STD.	
	LINES						
	1	2	3	4	5		
12 x 24	4C	8D	4C	N/A	N/A	0.5	B9-1224
12 x 36	4C	8D	8D	4C	N/A	0.5	B9-1236
12 x 48	4C	8D	8D	8D	4C	0.5	B9-1248

BORDER AND RADIUS LAYOUT



MAJOR GUIDE SIGN LAYOUT

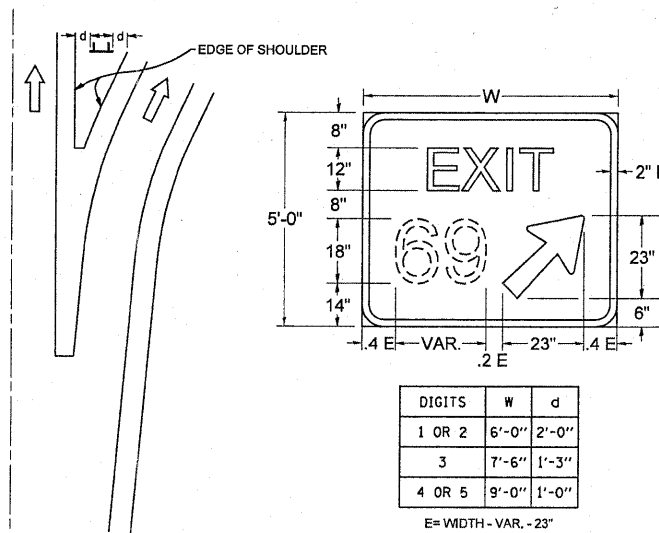


NUMBER OF STEEL SUPPORTS	A	B
2	.2 W	.6 W
3	.15 W	.35 W
4	.125 W	.25 W
5	.1 W	.2 W

"L" IS THE LENGTH OF SUPPORT, NOT INCLUDING THE STUB PROJECTION, CLOSEST TO THE EDGE OF THE PAVEMENT.

"A" IS THE DISTANCE FROM THE SIGN EDGE TO THE CENTERLINE OF THE NEAREST SUPPORT. "B" IS THE DISTANCE BETWEEN CENTERLINES OF SUPPORTS.

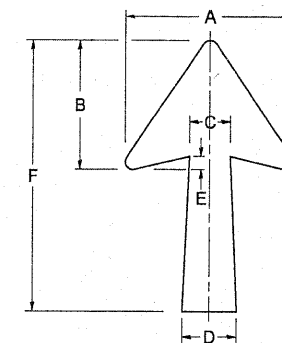
GORE SIGNS



DIGITS	W	d
1 OR 2	6'-0"	2'-0"
3	7'-6"	1'-3"
4 OR 5	9'-0"	1'-0"

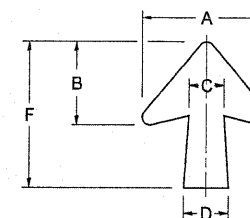
E = WIDTH - VAR. - 23"

STANDARD ARROWS FOR INTERSTATE GUIDE SIGNS



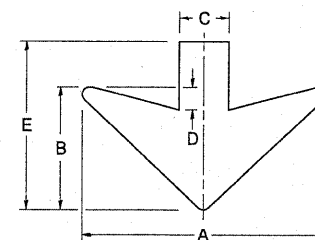
ARROW SYMBOL	A	B	C	D	E	F	R
24 1/4 x 15 1/8	15 1/8	11 3/8	3 3/4	5	1 5/8	24 1/4	1 5/8
29 1/4 x 18 1/4	18 1/4	14	4 1/2	6	1 1/2	29 1/4	3/4
35 5/8 x 22 1/4	22 1/4	17	5 3/8	7 1/8	1 3/4	35 5/8	1
18 1/4 x 11 1/4	11 1/4	8 3/4	3 3/8	3 3/8		18 1/4	

NOTE: D & F ARE RECOMMENDED DIMENSIONS. TAPER SHOULD BE HELD CONSTANT FOR LONGER OR SHORTER SHAFT LENGTHS



ARROW SYMBOL	A	B	C	D	E	F	R
17 1/4 x 14 1/4	14 1/4	9 3/8	3 3/8	4 1/2	5/8	17 1/4	3/4
20 1/4 x 17 1/4	17 1/4	11 3/4	4 3/8	5 5/8	1 1/2	20 1/4	
25 x 21 1/8	21 1/8	14 1/4	5	6 3/4	1 3/4	25	1
9 3/8 x 8 3/8	8 3/8	5 3/8	2 3/8	2 3/8		9 3/8	1/2

DOWN ARROWS



ARROW SYMBOL	A	B	C	D	E	R
16 1/2 x 24	24	12	5	1 1/2	16 1/2	3/4
22 x 32	32	16	6 1/2	3	22	1

6-2-2011

Added sheet 6-6-11