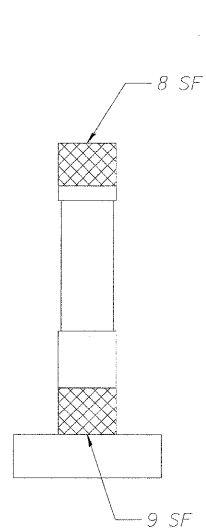
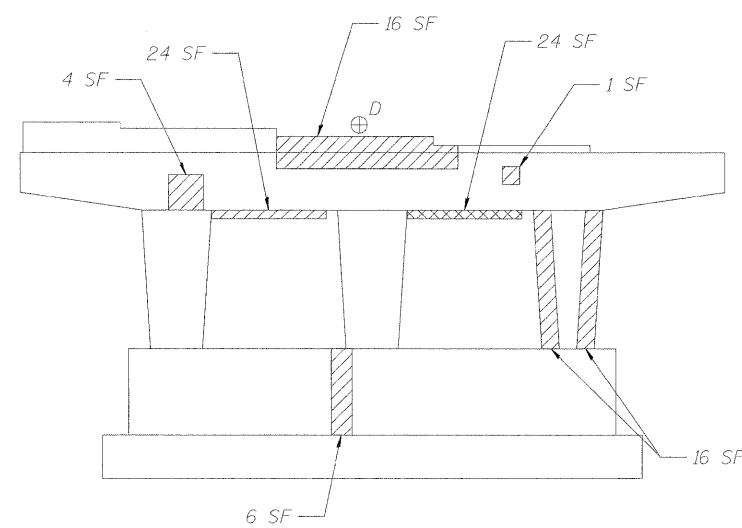


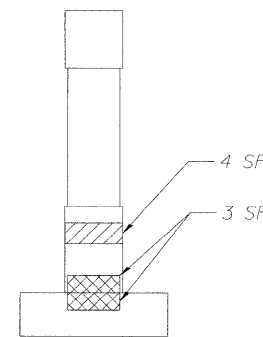
EAST ELEVATION - PIER 1
(Looking Back Station)



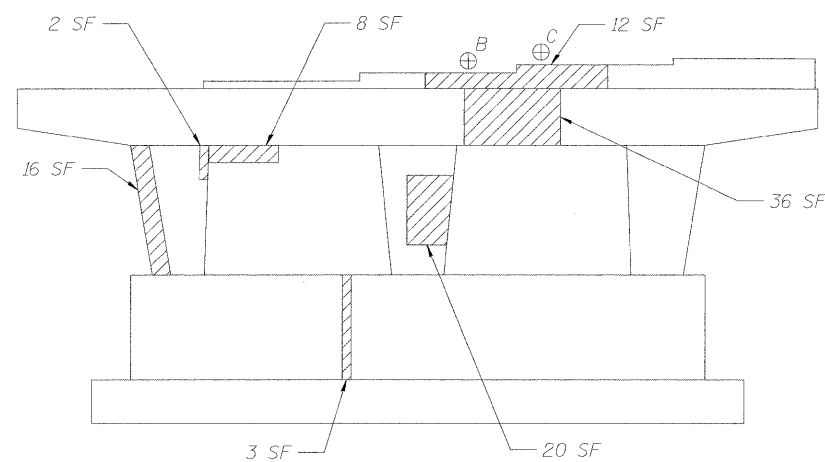
NORTH END - PIER 1



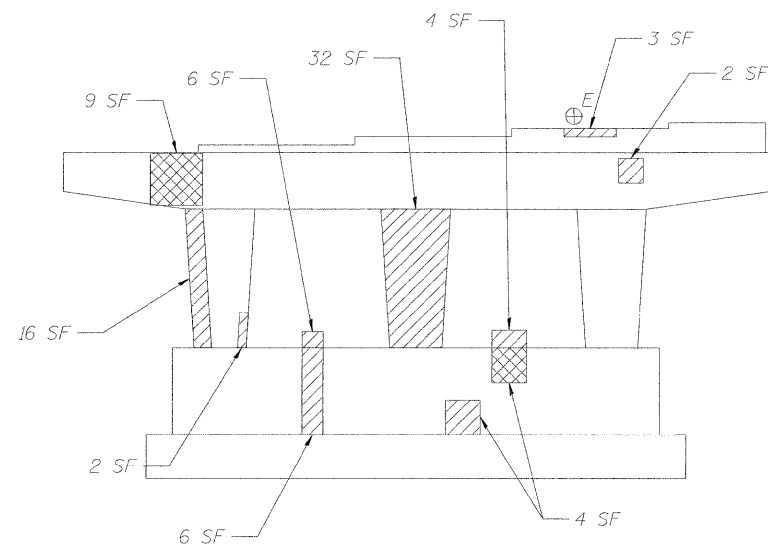
EAST ELEVATION - PIER 2
(Looking Back Station)



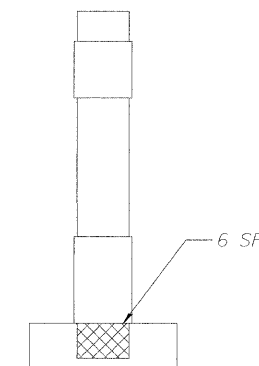
NORTH END - PIER 2



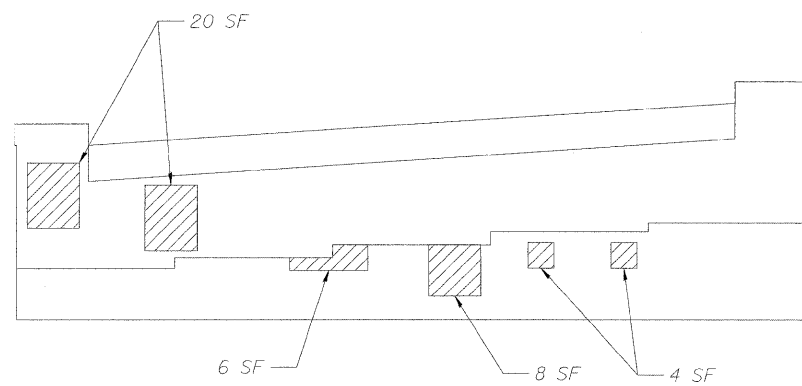
WEST ELEVATION - PIER 1
(Looking Ahead Station)



WEST ELEVATION - PIER 2
(Looking Ahead Station)



SOUTH END - PIER 2



EAST ABUTMENT ELEVATION
(Looking Ahead Station)

REACTION TABLE

Location	Dead Load Reactions (kips)
A- Span 2 Girder 1	62.4
B- Span 1 Girder 3	28.2
C- Span 1 Girder 4	28.2
D- Span 3 Girder 3	35.6
E- Span 2 Girder 4	40.0

BILL OF MATERIAL

Item	Unit	Total
Structural Repair of Concrete (Depth Equal to or Less Than 5 inches)	Sq. Ft.	401
Structural Repair of Concrete (Depth Greater Than 5 inches)	Sq. Ft.	99
Temporary Shoring and Cribbing	Each	5

LEGEND

SF = Square Feet



Structural Repair of Concrete (Depth Equal to or less than 5 in.)



Structural Repair of Concrete (Depth greater than 5 in.)

⊕ Temporary Shoring and Cribbing Required

NOTE

1. The Contractor shall take sufficient precautions to prevent damage to the Steel Wide Flange Beams.



9901 S. Western Ave.
Chicago, IL 60643
Ph. 773-881-4788
F: 773.239.3728

DESIGNED - TBS
CHECKED - RJL
DRAWN - JJE
CHECKED - TBS

REVISED -
REVISED -
REVISED -
REVISED -

**STATE OF ILLINOIS
DEPARTMENT OF TRANSPORTATION**

SUBSTRUCTURE REPAIRS

SHEET NO. 3 OF 8 SHEETS

F.A.U. RTE.	SECTION	COUNTY	TOTAL SHEETS	SHEET NO.
426	BR-HR-1(82)	KANE	124	103
STA. TO STA.		CONTRACT NO. 60M46		
FED. ROAD DIST. NO.		ILLINOIS FED. AID PROJECT		