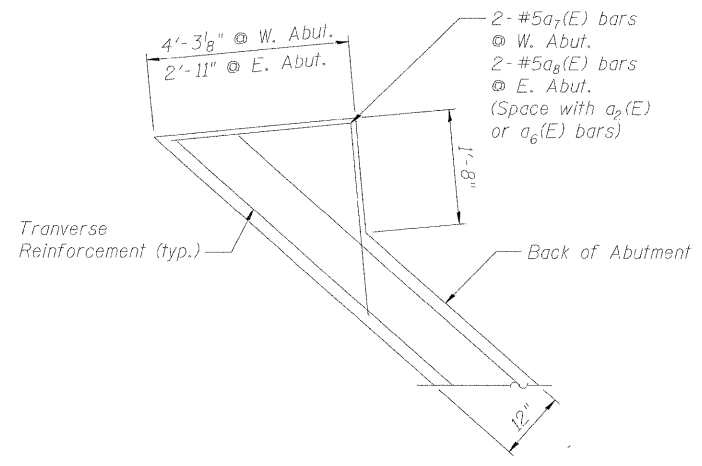
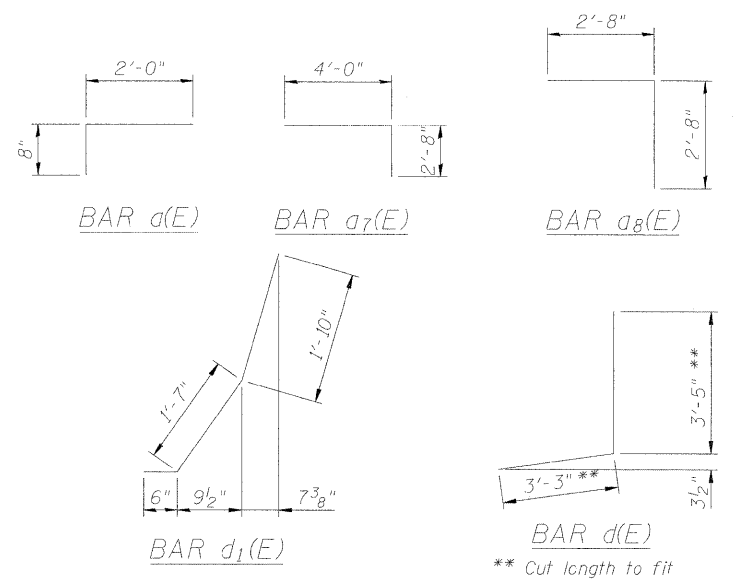


TYPICAL SECTION AT PIER



PLAN OF ABUTMENT AT NORTHEAST AND SOUTHWEST WINGWALLS

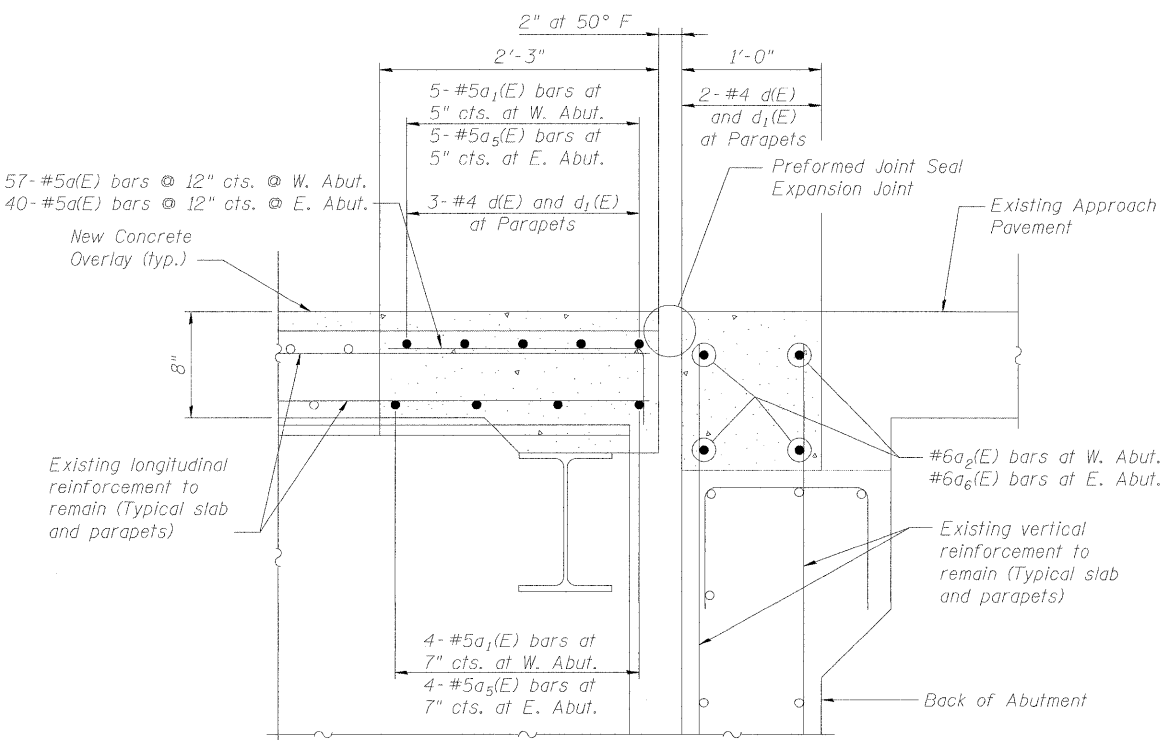


BILL OF MATERIAL

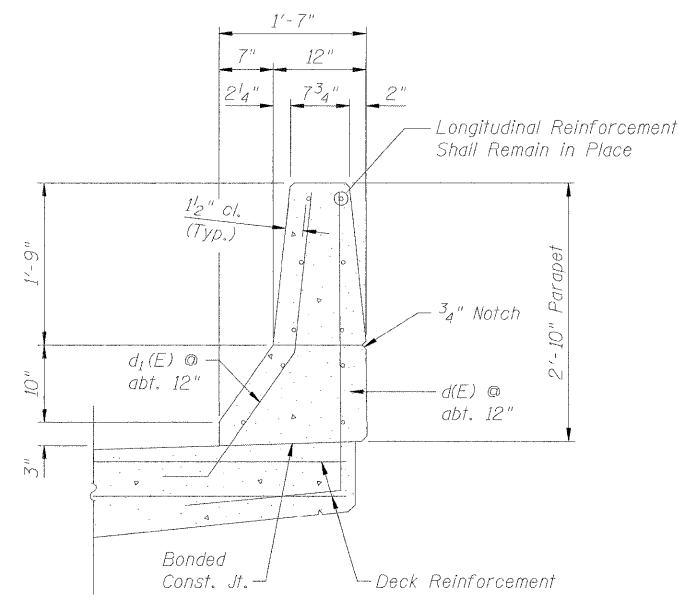
Bar	No.	Size	Length	Shape
a(E)	285	#5	2'-8"	┌
a1(E)	9	#5	56'-7"	—
a2(E)	4	#6	56'-7"	—
a3(E)	18	#5	49'-2"	—
a4(E)	18	#5	42'-10"	—
a5(E)	9	#5	39'-3"	—
a6(E)	4	#6	39'-3"	—
a7(E)	2	#5	6'-8"	┌
a8(E)	2	#5	5'-4"	┌
d(E)	44	#4	6'-8"	└
d1(E)	44	#4	3'-11"	└
Concrete Superstructure			Cu. Yd.	32.0
Reinforcement Bars, Epoxy Coated			Pound	4340

NOTES

- For details of Preformed Joint Seal Expansion Joints, see Sheet No. 6.
- Existing longitudinal parapet reinforcement shall remain in place.
- Placement of longitudinal reinforcement shall be parallel to roadway.
- Placement of traverse reinforcement shall be parallel to Abutment or @ Pier.



TYPICAL SECTION AT ABUTMENT



TYPICAL SECTION THRU PARAPET



9901 S. Western Ave.
Chicago, IL 60643
Ph. 773-881-4788
F: 773.239.3728

DESIGNED - TBS
CHECKED - RJL
DRAWN - JJE
CHECKED - TBS

REVISED -
REVISED -
REVISED -
REVISED -

STATE OF ILLINOIS
DEPARTMENT OF TRANSPORTATION

EXPANSION JOINT REPAIR

SHEET NO. 5 OF 8 SHEETS

F.A.U. RTE.	SECTION	COUNTY	TOTAL SHEETS	SHEET NO.
426	8R-HR-1(82)	KANE	124	105
STA. TO STA.	CONTRACT NO. 60M46			
FED. ROAD DIST. NO.	ILLINOIS FED. AID PROJECT			