

F.A.P. RTE.	SECTION	COUNTY	TOTAL SHEETS	SHEET NO.
339	2010-113-1	COOK	11	1
FED. ROAD DIST. NO.	ILLINOIS	CONTRACT NO. 60M47		

STATE OF ILLINOIS
DEPARTMENT OF TRANSPORTATION
DIVISION OF HIGHWAYS

**PROPOSED
HIGHWAY PLANS**

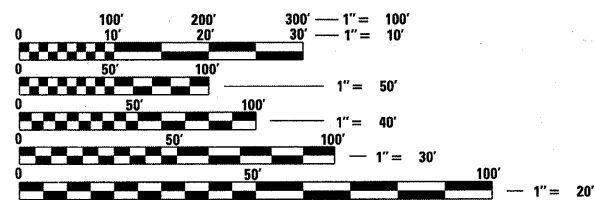
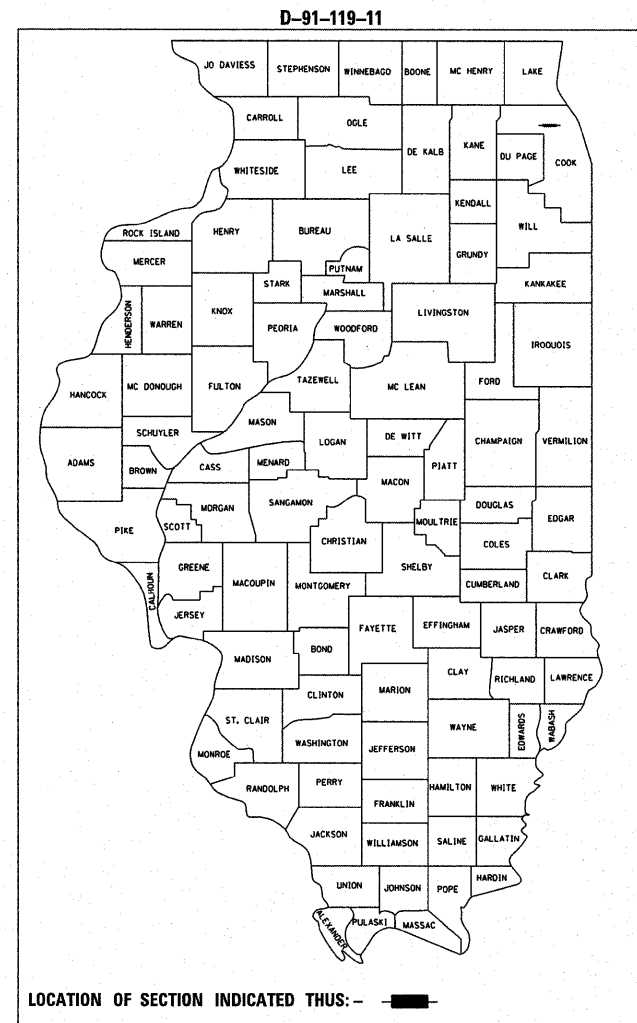
FAP 339: (IL 58 /GOLF ROAD)
SECTION 2010-113-1

EAST OF COLLEGE DRIVE TO WEST OF RIVER ROAD
IMPACT ATTENUATORS, RUMBLE STRIPS, PAVEMENT MARKERS, SIGNING

PROJECT: *HSIP-0339(028)*
COOK COUNTY
C-91-119-11

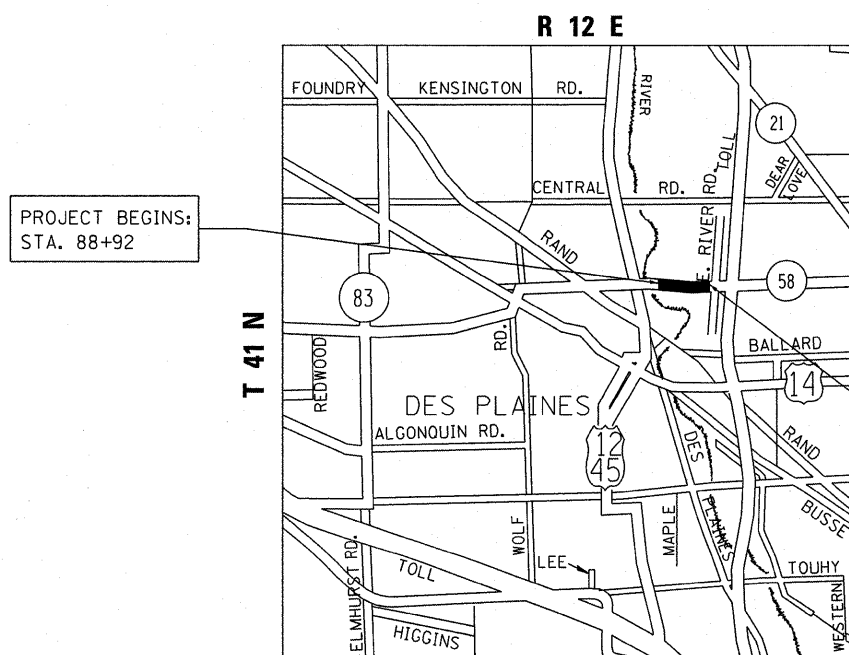
FOR INDEX OF SHEETS, SEE SHEET NO. 2

PROJECT IS LOCATED IN
CITY OF DES PLAINES



FULL SIZE PLANS HAVE BEEN PREPARED USING STANDARD ENGINEERING SCALES. REDUCED SIZED PLANS WILL NOT CONFORM TO STANDARD SCALES. IN MAKING MEASUREMENTS ON REDUCED PLANS, THE ABOVE SCALES MAY BE USED.

J.U.L.I.E.
JOINT UTILITY LOCATION INFORMATION FOR EXCAVATION
1-800-892-0123
OR 811



PROJECT BEGINS:
STA. 88+92

TRAFFIC DATA:
2009 ADT = 31,200
SPEED LIMIT: 45 MPH

PROJECT ENDS:
STA. 124+63

MAINE TOWNSHIP

GROSS LENGTH OF PROJECT = NET LENGTH OF PROJECT = 3,571 FEET = 0.68 MILES

PROJECT ENGINEER: DAN WILGREEN (847) 705-4240
PROJECT MANAGER: KEN ENG

CONTRACT NO. 60M47

STATE OF ILLINOIS
DEPARTMENT OF TRANSPORTATION
DIVISION OF HIGHWAYS

SUBMITTED MARCH 16, 20 11

Diane M. O'Keefe
DEPUTY DIRECTOR OF HIGHWAYS, REGION ENGINEER

May 13 20 11
Scott E. Stitt, P.E.
acting ENGINEER OF DESIGN AND ENVIRONMENT

May 13 20 11
Christine M. Reed
DIRECTOR OF HIGHWAYS, CHIEF ENGINEER

PRINTED BY THE AUTHORITY
OF THE STATE OF ILLINOIS

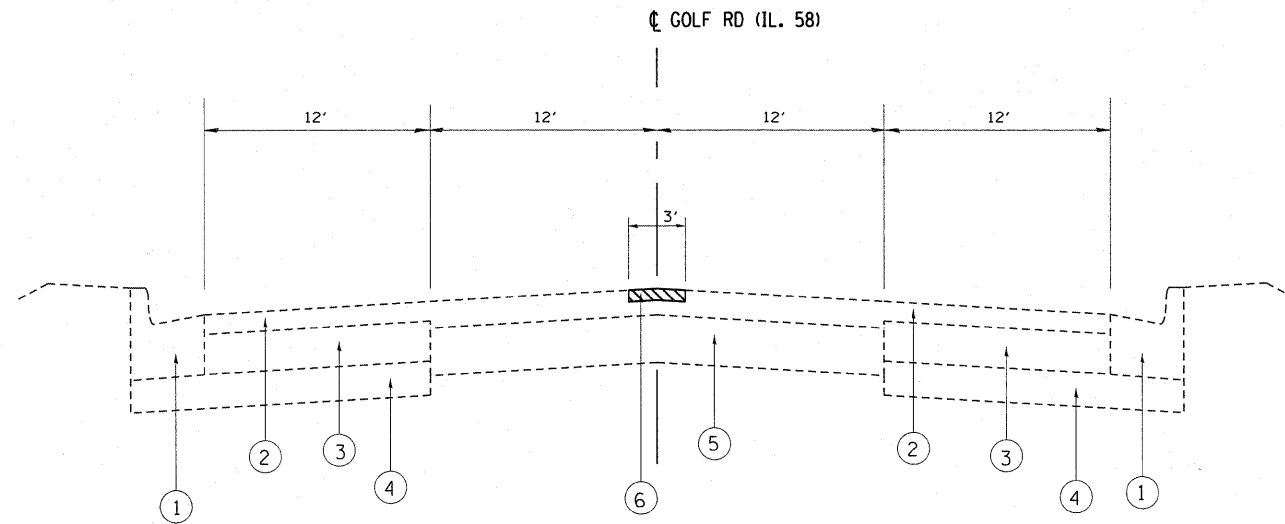
INDEX OF SHEETS

<u>SHEET NO.</u>	<u>DESCRIPTION</u>	<u>STANDARDS</u>	<u>GENERAL NOTES</u>
1	TITLE SHEET	000001-00 STANDARD SYMBOLS, ABBREVIATIONS AND PATTERNS	<p>BEFORE STARTING ANY EXCAVATION, THE CONTRACTOR SHALL CALL "JULIE" AT 800-892-0123 OR 811 FOR FIELD LOCATIONS OF BURIED ELECTRIC, TELEPHONE AND GAS FACILITIES. (48 HOUR NOTIFICATION IS REQUIRED)</p> <p>THE CONTRACTOR SHALL COORDINATE CONSTRUCTION ACTIVITIES WITH UTILITY COMPANIES AND THE CITY OF DESPLAINES.</p> <p>THE CONTRACTOR WILL NOT BE ALLOWED TO SET UP A YARD OR FIELD OFFICE ON STATE PROPERTY WITHOUT WRITTEN PERMISSION FROM THE DEPARTMENT.</p> <p>WHEN MILLED PAVEMENT IS OPEN TO TRAFFIC THE MAXIMUM GRADE DIFFERENTIAL BETWEEN PASSES OF THE MILLING MACHINE SHALL NOT EXCEED 1 1/2 INCHES (40MM) WHERE THE SPEED LIMIT IS 45 MPH (80KM/H) OR LESS AND 1 INCH (25 MM) WHERE THE SPEED LIMIT IS GREATER THAN 45 MPH (80 KM/H), WITH WRITTEN APPROVAL FROM THE ENGINEER, A MAXIMUM GRADE DIFFERENTIAL OF 3 INCHES (75 MM) MAY BE ALLOWED IF THE EDGE OF THE MILLING IS SLOPED A MINIMUM 1:3 (V:H).</p> <p>THE RESIDENT ENGINEER SHALL VERIFY THE LOCATIONS OF ALL EXISTING PAVEMENT MARKINGS PRIOR TO MILLING OR RESURFACING.</p> <p>ALL SIGN PANEL LOCATIONS ARE TO BE VERIFIED AND RECORDED PRIOR TO REMOVAL.</p> <p>ALL PAVEMENT MARKINGS SHALL BE PLACED THROUGHOUT THE IMPROVEMENT ACCORDING TO DISTRICT 1 TYPICAL PAVEMENT MARKING.</p> <p>TWO WEEKS PRIOR TO PLACING PERMANENT PAVEMENT MARKINGS, CONTACT WALLY CZARNY, AREA TRAFFIC FIELD ENGINEER AT (773) 685-4342.</p> <p>RAISED REFLECTIVE PAVEMENT MARKERS SHALL BE PLACED THROUGHOUT THE IMPROVEMENT ACCORDING TO THE DISTRICT STANDARDS AS NOTED IN THE DETAIL.</p> <p>THE UNIT WEIGHT (CONVERSION FACTOR) QUOTED IS FOR THE ESTIMATING PLAN QUANTITIES ONLY. ACTUAL QUANTITIES TO FULFILL CONTRACT REQUIREMENTS WILL BE DETERMINED BASED ON UNIT WEIGHT OF APPROVED MIX DESIGN, PLAN DIMENSIONS, AND DENSITY LIMITATIONS. MAXIMUM PAYMENT WILL BE COMPUTED BASED ON WEIGHT AVERAGE DENSITIES OF THE IN-PLACE MIXTURE.</p> <p>THE RESIDENT ENGINEER SHALL CONTACT THE TRAFFIC CONTROL SUPERVISOR AT (847) 705-4470 A MINIMUM OF 72 HOURS PRIOR TO THE PLACEMENT OF ANY TEMPORARY TRAFFIC CONTROL DEVICES.</p>
2	INDEX OF SHEETS, STATE STANDARDS AND GENERAL NOTES	701101-02 OFF-RD OPERATION, MULTILANE, LESS THAN 4.5 M (15') FROM PAVEMENT EDGE	
3	SUMMARY OF QUANTITIES		
4	TYPICAL CROSS SECTIONS	701606-07 URBAN LANE CLOSURE, MULTILANE, 2W WITH MOUNTABLE MEDIAN	
5-6	ROADWAY PLANS	701901-01 TRAFFIC CONTROL DEVICES	
7	SIGN PANEL REPLACEMENT SCHEDULE	720001-01 SIGN PANEL MOUNTING DETAILS	
8	TYPICAL APPLICATIONS RAISED REFLECTIVE PAVEMENT MARKERS (SNOW-PLOW RESISTANT) (TC-11)	720006-02 SIGN PANEL ERECTION DETAILS	
9	DISTRICT ONE TYPICAL PAVEMENT MARKINGS (TC-13)	728001-01 TELESCOPING STEEL SIGN SUPPORT	
10	ARTERIAL ROAD INFORMATION SIGNING (TC-22)		
11	RUMBLE STRIPS FOR CENTERLINE NON-FREEWAY		

FILE NAME =	USER NAME = abreuah	DESIGNED -	REVISED -	STATE OF ILLINOIS DEPARTMENT OF TRANSPORTATION	INDEX OF SHEETS, STATE STANDARDS & GENERAL NOTES	F.A.P. RTE.	SECTION	COUNTY	TOTAL SHEETS	SHEET NO.	
c:\pwwork\pwwork\abreuah\d0241076\DI119	l-shht-plendgn	DRAWN -	REVISED -			339	2010-113-I	COOK	11	2	
	PLOT SCALE = 50,0000 "/ IN.	CHECKED -	REVISED -			CONTRACT NO. 60M47					
	PLOT DATE = 3/31/2011	DATE -	REVISED -			SCALE: NONE	SHEET NO.	OF	SHEETS	STA.	TU
						FED. ROAD DIST. NO. 1 ILLINOIS FED. AID PROJECT					

SUMMARY OF QUANTITIES			URBAN 90% FED. 10% STATE TOTAL QUANTITIES	CONSTRUCTION TYPE CODE					SUMMARY OF QUANTITIES			TOTAL QUANTITIES	CONSTRUCTION TYPE CODE				
CODE NO	ITEM	UNIT		0021					CODE NO	ITEM	UNIT		0021				
40600200	BITUMINOUS MATERIALS (PRIME COAT)	TON	0.4	0.4													
40600300	AGGREGATE (PRIME COAT)	TON	2	2													
40600400	MIXTURE FOR CRACKS, JOINTS, AND FLANGEWAYS	TON	1.5	1.5													
40600895	CONSTRUCTING TEST STRIP	EACH	1	1													
40603340	HOT-MIX ASPHALT SURFACE COURSE, MIX "D", N70	TON	114	114													
44000157	HOT-MIX ASPHALT SURFACE REMOVAL, 2"	SO YD	1014	1014													
67000400	ENGINEER'S FIELD OFFICE, TYPE A	CAL MO	6	6													
67100100	MOBILIZATION	L SUM	1	1													
70102625	TRAFFIC CONTROL AND PROTECTION, STANDARD 701606	L SUM	1	1													
* 72000100	SIGN PANEL - TYPE 1	SO FT	100.2	100.2													
* 72400200	REMOVE SIGN PANEL ASSEMBLY - TYPE B	EACH	17	17													
* 72800100	TELESCOPING STEEL SIGN SUPPORT	FOOT	171	171													
* 78000200	THERMOPLASTIC PAVEMENT MARKING - LINE 4"	FOOT	13234	13234													
* 78100100	RAISED REFLECTIVE PAVEMENT MARKER	EACH	156	156													
78300100	PAVEMENT MARKING REMOVAL	SO FT	2384	2384													
78300200	RAISED REFLECTIVE PAVEMENT MARKER REMOVAL	EACH	125	125													
X0325866	CENTER LINE - RUMBLE STRIP	FOOT	3042	3042													
Z0029999	IMPACT ATTENUATOR REMOVAL	EACH	2	2													
Z0030150	IMPACT ATTENUATORS (NON-REDIRECTIVE), TEST LEVEL 3	EACH	4	4													
Z0030850	TEMPORARY INFORMATION SIGNING	SO FT	51.2	51.4													
Z0048665	RAILROAD PROTECTIVE LIABILITY INSURANCE	L SUM	1	1													

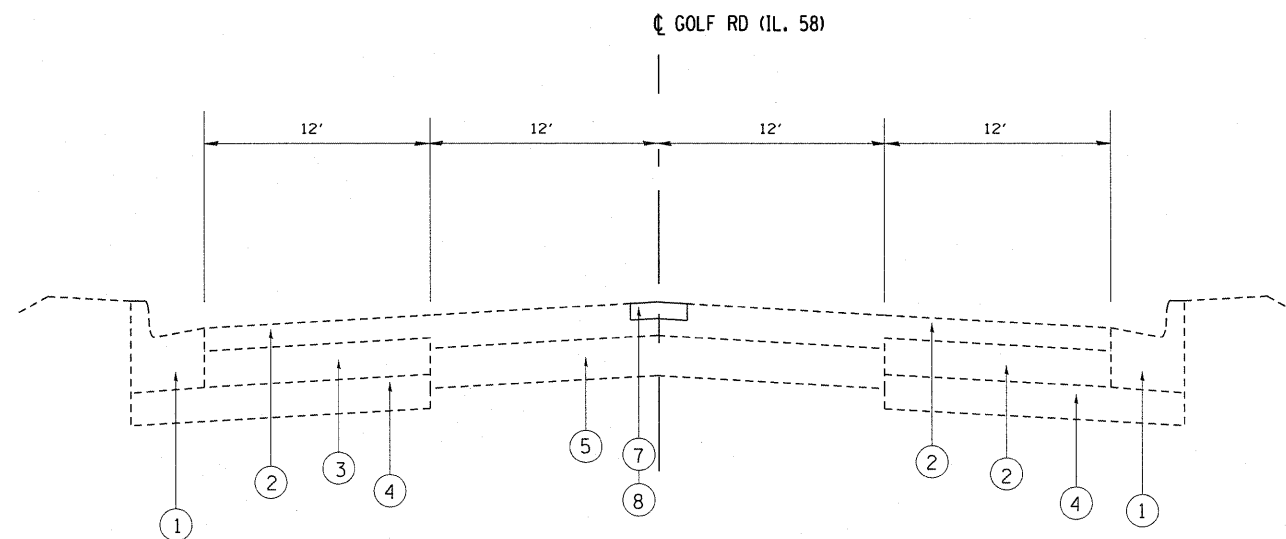
* SPECIALTY ITEM



EXISTING TYPICAL SECTION
STA. 88+92 TO STA. 124+63

LEGEND

- ① EXISTING CURB & GUTTER, TYPE B-6.24
- ② EXISTING HMA OVERLAY ±5 3/8"
- ③ EXISTING HMA BASE COURSE, 1 1/4"
- ④ EXISTING GRANULAR SUBBASE, 4"
- ⑤ EXISTING PCC PAVEMENT
- ⑥ PROPOSED HMA SURFACE REMOVAL 2"
- ⑦ PROPOSED HOT-MIX ASPHALT SURFACE COURSE, MIX "D", N70, 2"
- ⑧ PROPOSED CENTERLINE RUMBLE STRIP

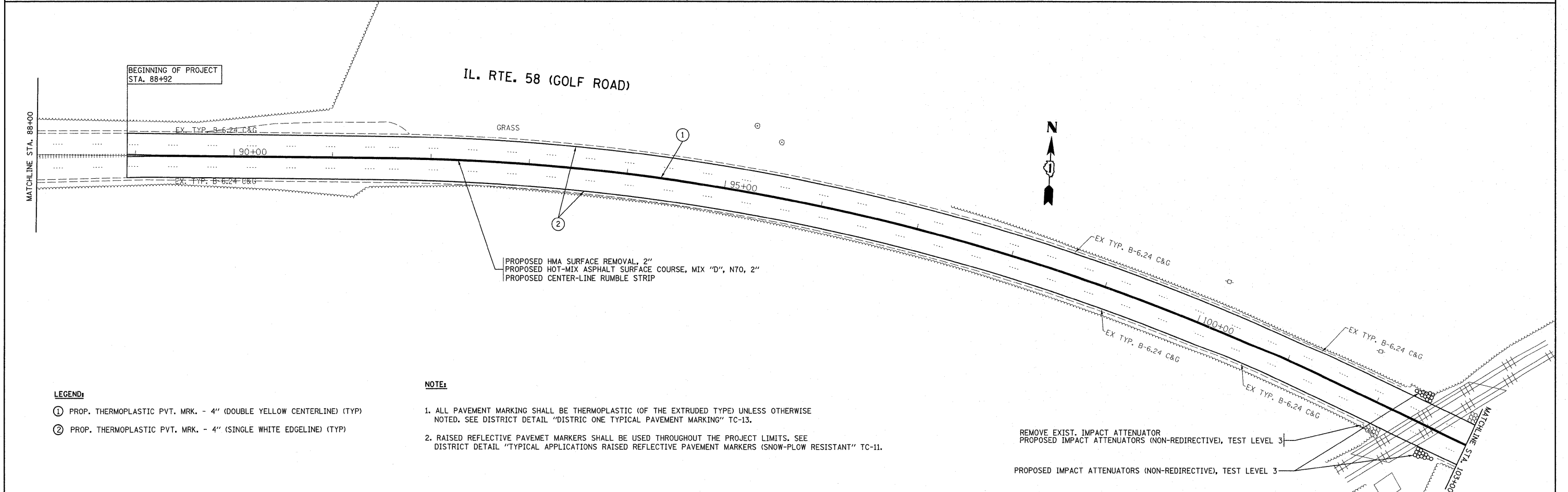
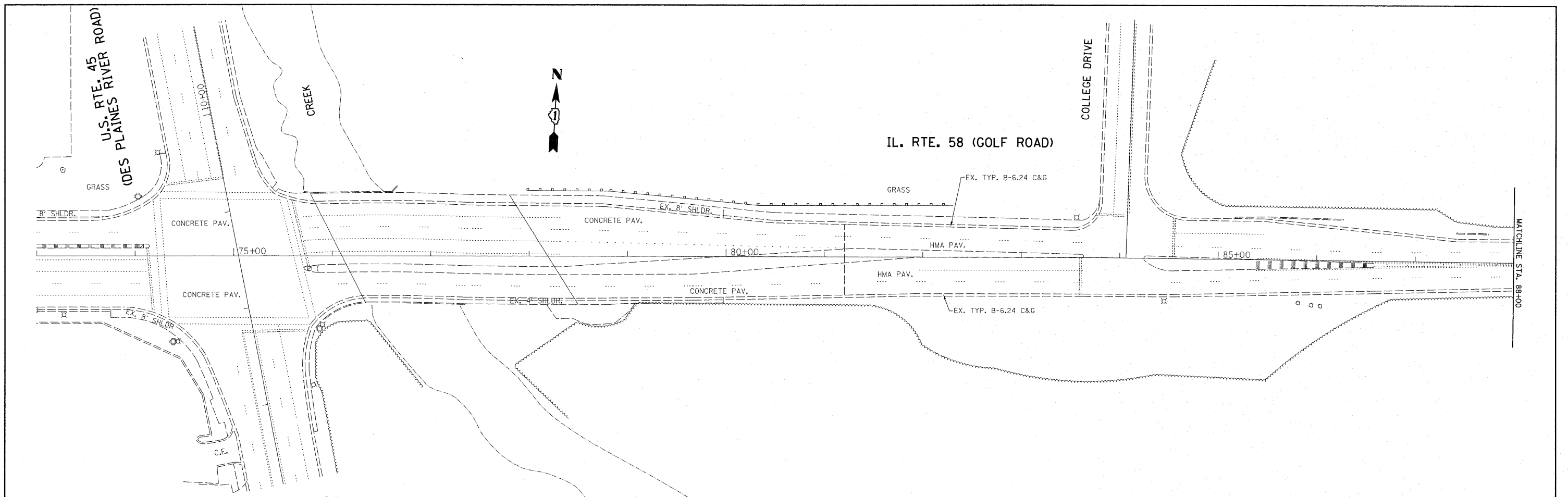


PROPOSED TYPICAL SECTION
STA. 88+92 TO STA. 124+63

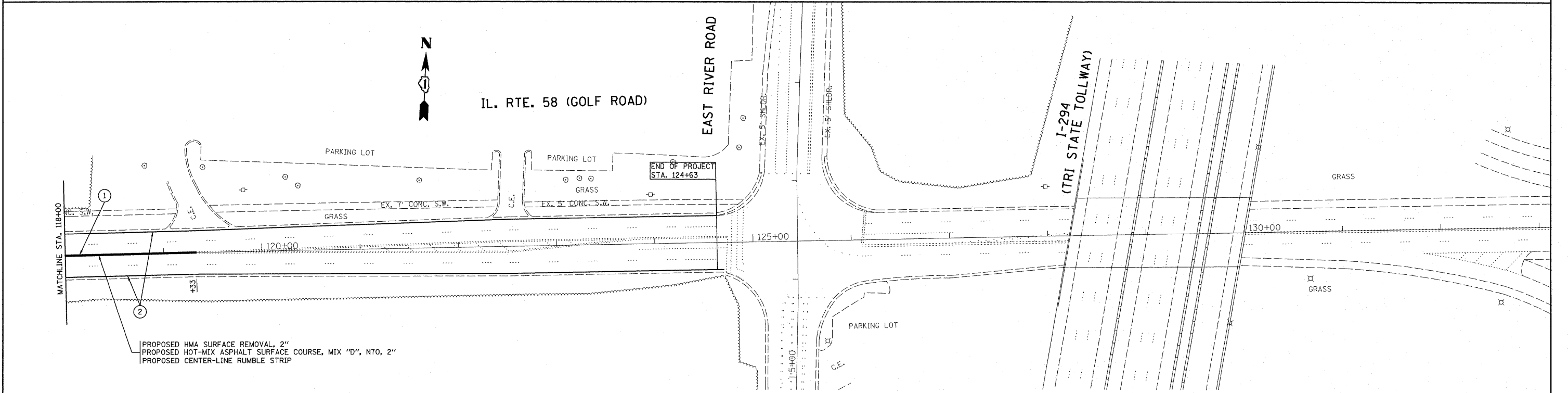
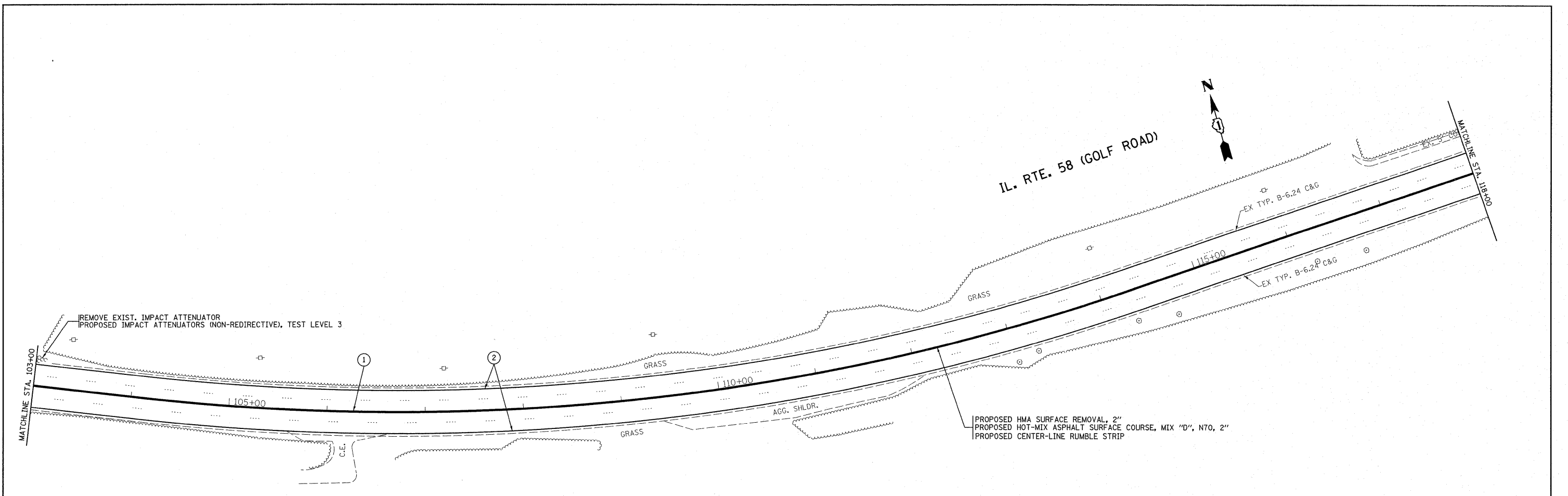
HOT-MIX ASPHALT MIXTURE REQUIREMENTS	
MIXTURE TYPE	AIR VOIDS
CENTERLINE RESURFACING	
HOT-MIX ASPHALT SURFACE COURSE, MIX "D", N70 (IL 9.5 mm)	4% @ 70 GYR

THE UNIT WEIGHT USED TO CALCULATE ALL HMA SURFACE MIXTURE QUANTITIES IS 112 LB/ SQ YD/IN.

THE "AC TYPE" FOR POLYMERIZED HMA MIXES SHALL BE "SBS/SBR PG 70-22" AND FOR NON-POLYMERIZED HMA THE "AC TYPE" SHALL BE "PG 64 -22" UNLESS MODIFIED BY DISTRICT ONE SPECIAL PROVISIONS. FOR "PERCENT OF RAP" SEE DISTRICT ONE SPECIAL PROVISIONS.



FILE NAME =	USER NAME = abreuah	DESIGNED -	REVISED -	STATE OF ILLINOIS DEPARTMENT OF TRANSPORTATION	IL. RTE. 58 (GOLF ROAD) (WOLF ROAD TO EAST RIVER ROAD) EXISTING AND PROPOSED PAVEMENT MARKING PLAN	F.A.P. RTE.	SECTION	COUNTY	TOTAL SHEETS	SHEET NO.
ct:\pwwork\pwwork\abreuah\d0241076\011191-sh-t-plan.dgn	DRAWN -	REVISED -	339			2007-017RS	COOK	11	5	
PLOT SCALE = 50.0000' / IN.	CHECKED -	REVISED -	CONTRACT NO. 60C72							
PLOT DATE = 4/4/2011	DATE -	REVISED -	FED. ROAD DIST. NO. 1 ILLINOIS FED. AID PROJECT							
					SCALE: 1" = 50'	SHEET NO. OF SHEETS		STA. 73+00.00 TO STA. 103+00.00		



LEGEND:

- ① PROP. THERMOPLASTIC PVT. MRK. - 4" (DOUBLE YELLOW CENTERLINE) (TYP)
- ② PROP. THERMOPLASTIC PVT. MRK. - 4" (SINGLE WHITE EDGELINE) (TYP)

NOTE:

1. ALL PAVEMENT MARKING SHALL BE THERMOPLASTIC (OF THE EXTRUDED TYPE) UNLESS OTHERWISE NOTED. SEE DISTRICT DETAIL "DISTRICT ONE TYPICAL PAVEMENT MARKING" TC-13.
2. RAISED REFLECTIVE PAVEMENT MARKERS SHALL BE USED THROUGHOUT THE PROJECT LIMITS. SEE DISTRICT DETAIL "TYPICAL APPLICATIONS RAISED REFLECTIVE PAVEMENT MARKERS (SNOW-PLOW RESISTANT)" TC-11.

FILE NAME =	USER NAME = abreuh	DESIGNED -	REVISED -
c:\pwwork\pwwork\abreuh\d0241076\01119	l-sh-t-plan.dgn	DRAWN -	REVISED -
	PLOT SCALE = 50.0000' / IN.	CHECKED -	REVISED -
	PLOT DATE = 4/4/2011	DATE -	REVISED -

**STATE OF ILLINOIS
DEPARTMENT OF TRANSPORTATION**

**IL. RTE. 58 (GOLF ROAD) (WOLF ROAD TO EAST RIVER ROAD)
EXISTING AND PROPOSED PAVEMENT MARKING PLAN**

SCALE: 1"= 50' SHEET NO. OF SHEETS STA. 103+00.00 TO STA. 133+00.00

F.A.P. RTE.	SECTION	COUNTY	TOTAL SHEETS	SHEET NO.
339	2007-017RS	COOK	11	6
CONTRACT NO. 60C72				
FED. ROAD DIST. NO. 1 ILLINOIS FED. AID PROJECT				

ILL 58 (Golf Rd.) from College Drive to River Rd. (SIGN PANEL SCHEDULE)

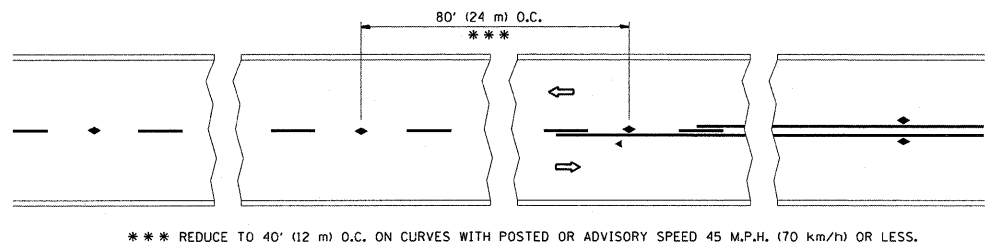
SIGN NAME/DESCRIPTION	MUTCD CODE	SIZE W X H (INCHES)	QUANTITY	AREA (sqft)
KEEP RIGHT	R4-7	24 X 30	1	5.0
SPEED LIMIT 45	R2-1	30 x 36	8	60.0
EQUESTRIAN CROSSING	W11-7	36 x 36	2	18.0
"WEST" SIGN	M3-4	24 x 12	1	2.0
"ILLINOIS 58" SIGN	M1-I100A	24 x 24	1	4.0
INTERSTATEN ROUTE 294	M1-1	30 x 24	1	5.0
"NORTH" SIGN	M3-1	24 x 12	1	2.0
"TOLL" SIGN	M4-15	24 X 12	1	2.0
INTERSTATE "JCT" SIGN	M2-1	21 x 15	1	2.2
			TOTAL SIGN	100.2

NOTES

ALL SIGN PANELS ON ILL 58 BETWEEN COLLEGE DRIVE AND RIVER ROAD ARE TO BE REMOVED AND REPLACED IN KIND.

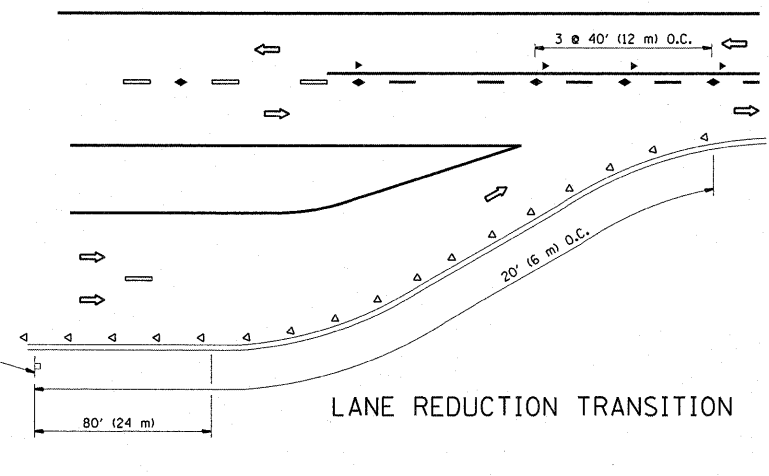
ALL SIGN PANEL TYPES, SIZES AND LOCATIONS ARE TO BE VERIFIED IN THE FIELD PRIOR TO ORDERING.

THE RESIDENT ENGINEER SHOULD CONTACT MR. WALLY CZARNY, AREA TRAFFIC ENGINEER, AT (847) 685-4342 AT LEAST 2 WEEKS PRIOR TO PLACING FINAL SIGN PANELS.

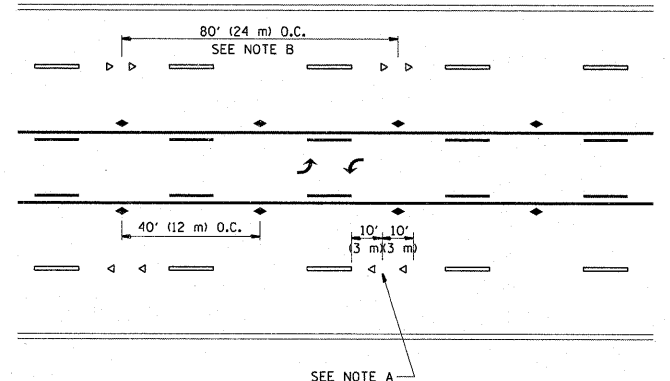


*** REDUCE TO 40' (12 m) O.C. ON CURVES WITH POSTED OR ADVISORY SPEED 45 M.P.H. (70 km/h) OR LESS.

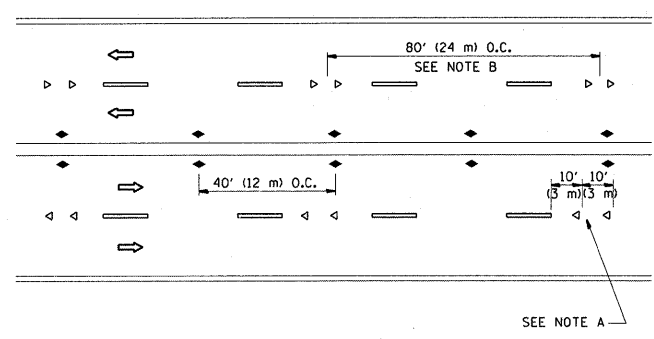
TWO-LANE/TWO-WAY



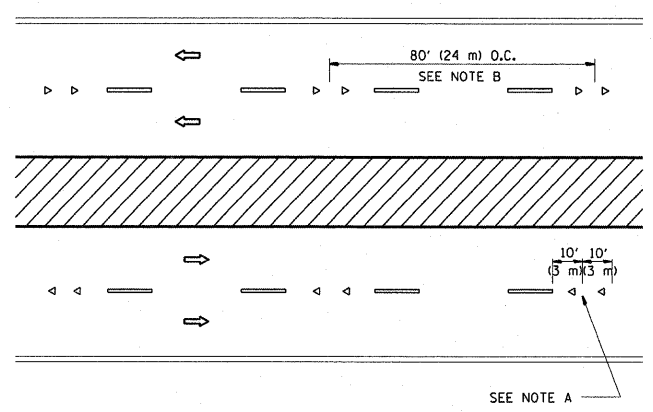
LANE REDUCTION TRANSITION



TWO-WAY LEFT TURN



MULTI-LANE/UNDIVIDED



MULTI-LANE/DIVIDED

GENERAL NOTES

1. MARKERS USED WITH DASHED LINES SHALL BE CENTERED IN THE GAP BETWEEN SEGMENTS.
2. MARKERS USED ADJACENT TO SOLID LINES SHALL BE OFFSET 2 TO 3 (50 TO 75) TOWARD TRAFFIC AS SHOWN.
3. MARKERS THROUGH TANGENTS LESS THAN 500' (150 m) IN LENGTH BETWEEN CURVES SHALL BE INSTALLED AT THE LESSER OF THE TWO CURVE SPACINGS.

SYMBOLS

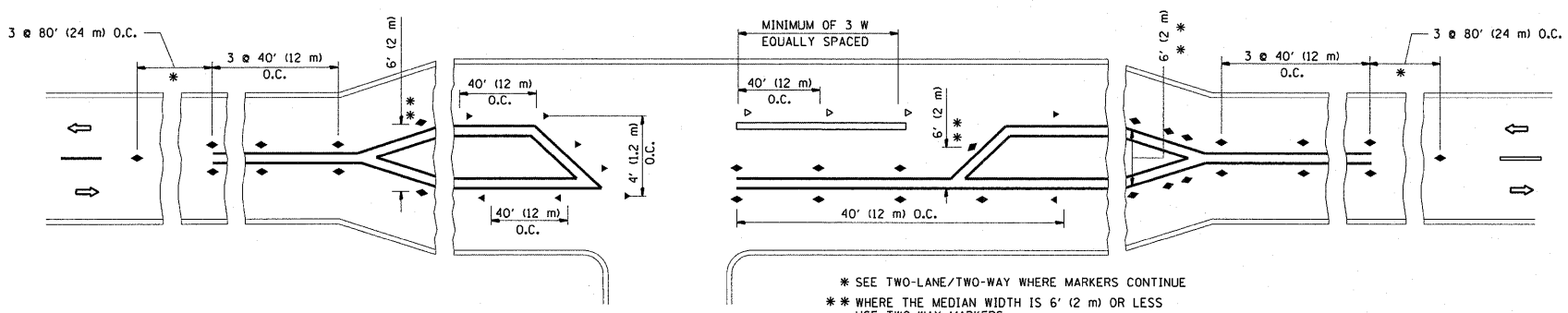
- YELLOW STRIPE
- WHITE STRIPE
- ◀ ONE-WAY AMBER MARKER
- ◀ ONE-WAY CRYSTAL MARKER (W/O)
- ◆ TWO-WAY AMBER MARKER

LANE MARKER NOTES

- A. USE DOUBLE LANE LINE MARKERS SPACED AS SHOWN.
- B. REDUCE TO 40' (12 m) O.C. ON CURVES WHERE ADVISORY SPEEDS ARE 10 M.P.H (20 km/h) LOWER THAN POSTED SPEEDS.

DESIGN NOTES

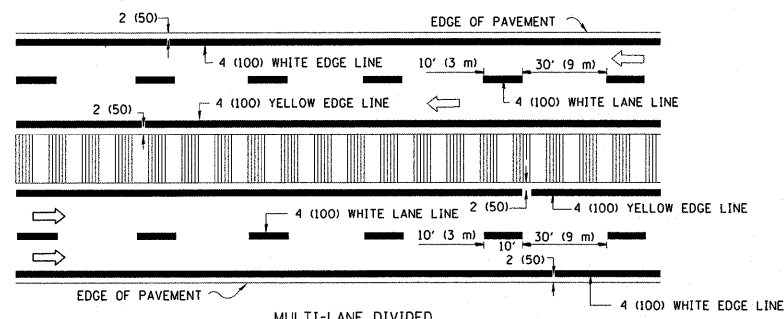
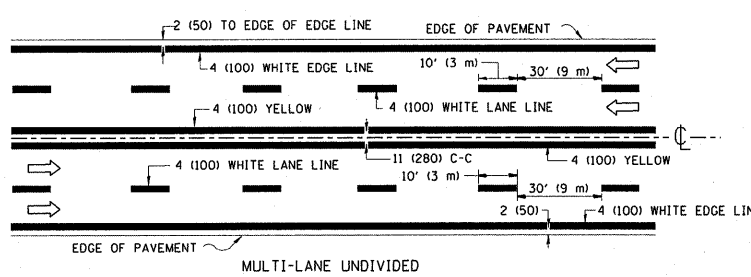
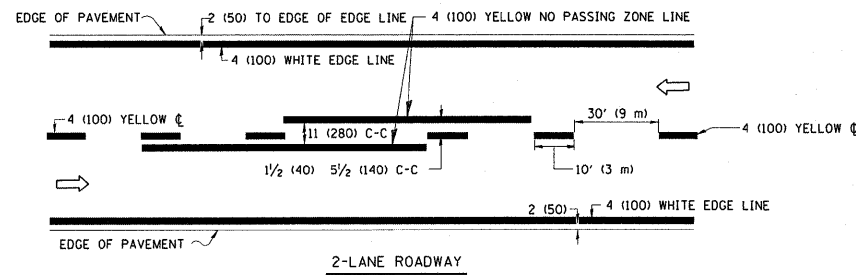
1. DOUBLE LANE LINE MARKERS SHALL BE USED UNLESS SPECIFIED OTHERWISE.
2. EXCEPT AS SHOWN ON THE LANE REDUCTION TRANSITION AND FREEWAY EXIT RAMP DETAIL, MARKERS ARE NOT TO BE SPECIFIED ON RIGHT EDGE LINES.
3. THE EXACT MARKER LIMITS, SPACING, AND COLOR SHALL BE INCLUDED IN THE PLANS WHEN STANDARD SPECIFICATIONS ARE NOT BEING USED.
4. MARKERS SHOULD NOT BE USED ALONGSIDE CURBS EXCEPT FOR EXTREMELY SHORT SECTIONS OF CURBS WHERE NOT MORE THAN TWO MARKERS WOULD BE INVOLVED.



LEFT TURN

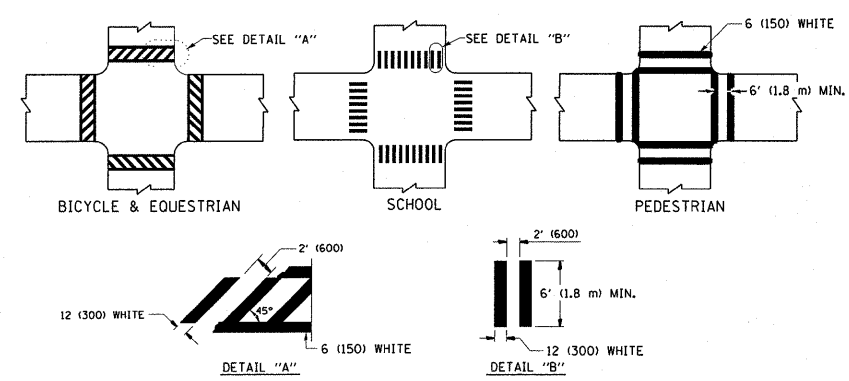
All dimensions are in inches (millimeters) unless otherwise shown.

FILE NAME = c:\pw_work\pwwork\ebreaugh\0241076\Dist3.dgn	USER NAME = ebreaugh	DESIGNED - DRAWN -	REVISED - REVISED - REVISED - REVISED -	T. RAMMACHER 09-19-94 T. RAMMACHER 03-12-99 T. RAMMACHER 01-06-00 C. JUCIUS 09-09-09	STATE OF ILLINOIS DEPARTMENT OF TRANSPORTATION	TYPICAL APPLICATIONS RAISED REFLECTIVE PAVEMENT MARKERS (SNOW-PLOW RESISTANT)		F.A.P. RTE. 339	SECTION 2010-113-1	COUNTY COOK	TOTAL SHEETS 11	SHEET NO. 8
PLOT SCALE = 50.7684' / IN. PLOT DATE = 3/15/2011		CHECKED - DATE -				SCALE: NONE	SHEET NO. 1 OF 1 SHEETS	STA. TO STA.	TC-11 CONTRACT NO. 60M47 FED. ROAD DIST. NO. 1 ILLINOIS FED. AID PROJECT			

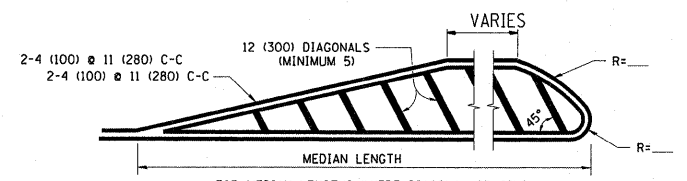
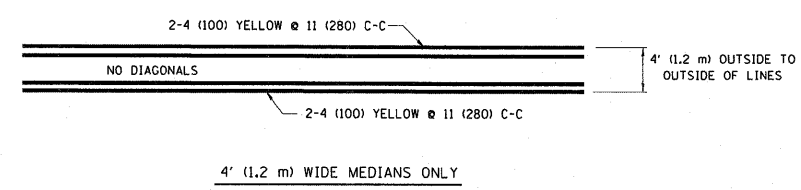


NOTE: MEDIANS WITH BARRIER CURB DO NOT REQUIRE AN EDGE LINE

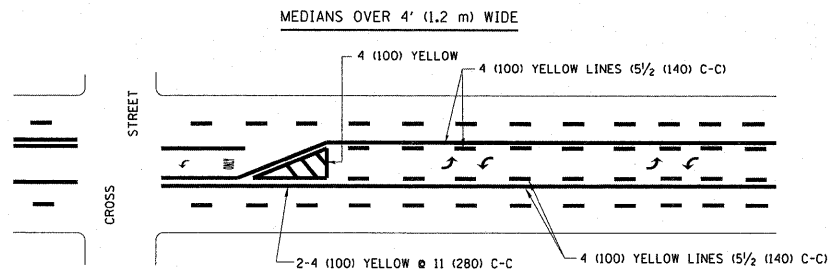
TYPICAL LANE AND EDGE LINE MARKING



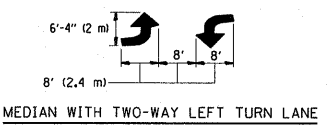
TYPICAL CROSSWALK MARKING



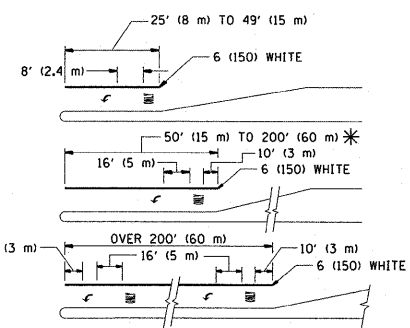
FOR MEDIAN LENGTHS WHERE DIAGONAL SPACING CANNOT BE ATTAINED, USE 5 (FIVE) EQUALLY SPACED DIAGONAL LINES.
DIAGONAL LINE SPACING: 50' (15 m) C-C (LESS THAN 30MPH (50 km/h))
75' (25 m) C-C 30MPH (50 km/h) TO 45MPH (70 km/h)
150' (45 m) C-C (MORE THAN 45MPH (70 km/h))



A MINIMUM OF TWO PAIRS OF TURN ARROWS SHALL BE USED, WHITE IN COLOR. ADDITIONAL PAIRS SHALL BE PLACED AT 200' (60 m) TO 300' (90 m) INTERVALS.



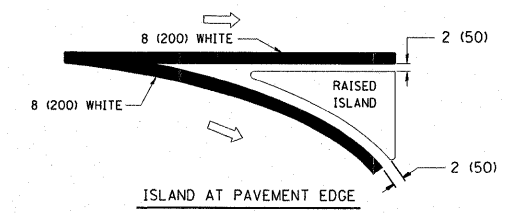
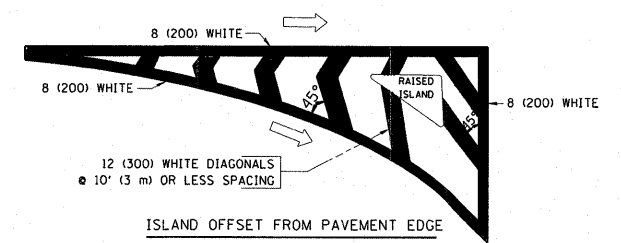
TYPICAL PAINTED MEDIAN MARKING



FULL SIZE LETTERS 8' (2.4 m) AND ARROWS SHALL BE USED.
AREA = 15.6 SQ. FT. (1.5 m²) ONLY AREA = 20.8 SQ. FT. (1.9 m²)
* TURN LANES IN EXCESS OF 400' (120 m) IN LENGTH MAY HAVE AN ADDITIONAL SET OF ARROW - "ONLY" INSTALLED MIDWAY BETWEEN THE OTHER TWO SETS OF ARROW - "ONLY".

TYPICAL LEFT (OR RIGHT) TURN LANE

TYPICAL TURN LANE MARKING



TYPICAL ISLAND MARKING

TYPE OF MARKING	WIDTH OF LINE	PATTERN	COLOR	SPACING / REMARKS
CENTERLINE ON 2 LANE PAVEMENT	4 (100)	SKIP-DASH	YELLOW	10' (3 m) LINE WITH 30' (9 m) SPACE
CENTERLINE ON MULTI-LANE UNDIVIDED PAVEMENT	2 @ 4 (100)	SOLID	YELLOW	11 (280) C-C
NO PASSING ZONE LINES FOR ONE DIRECTION FOR BOTH DIRECTIONS	4 (100) 2 @ 4 (100)	SOLID SOLID	YELLOW YELLOW	5/2 (140) C-C FROM SKIP-DASH CENTERLINE 11 (280) C-C OMIT SKIP-DASH CENTERLINE BETWEEN
LANE LINES	4 (100) 5 (125) ON FREEWAYS	SKIP-DASH SKIP-DASH	WHITE WHITE	10' (3 m) LINE WITH 30' (9 m) SPACE
DOTTED LINES (EXTENSIONS OF CENTER, LANE OR TURN LANE MARKINGS)	SAME AS LINE BEING EXTENDED	SKIP-DASH	SAME AS LINE BEING EXTENDED	2' (600) LINE WITH 6' (1.8 m) SPACE
EDGE LINES	4 (100)	SOLID	YELLOW-LEFT WHITE-RIGHT	OUTLINE MOUNTABLE MEDIANS IN YELLOW; EDGE LINES ARE NOT USED NEXT TO BARRIER CURB
TURN LANE MARKINGS	6 (150) LINE; FULL SIZE LETTERS & SYMBOLS (8' (2.4m))	SOLID	WHITE	SEE TYPICAL TURN LANE MARKING DETAIL
TWO WAY LEFT TURN MARKING	2 @ 4 (100) EACH DIRECTION 8' (2.4m) LEFT ARROW	SKIP-DASH AND SOLID IN PAIRS	YELLOW WHITE	10' (3 m) LINE WITH 30' (9 m) SPACE FOR SKIP-DASH; 5/2 (140) C-C BETWEEN SOLID LINE AND SKIP-DASH LINE SEE TYPICAL TWO-WAY LEFT TURN MARKING DETAIL
CROSSWALK LINES (PEDESTRIAN) A. DIAGONALS (BIKE & EQUESTRIAN) B. LONGITUDINAL BARS (SCHOOL)	2 @ 6 (150) 12 (300) @ 45° 12 (300) @ 90°	SOLID SOLID SOLID	WHITE WHITE WHITE	NOT LESS THAN 6' (1.8 m) APART 2' (600) APART 2' (600) APART SEE TYPICAL CROSSWALK MARKING DETAILS.
STOP LINES	24 (600)	SOLID	WHITE	PLACE 4' (1.2 m) IN ADVANCE OF AND PARALLEL TO CROSSWALK, IF PRESENT. OTHERWISE, PLACE AT DESIRED STOPPING POINT. PARALLEL TO CROSSROAD CENTERLINE, WHERE POSSIBLE
PAINTED MEDIANS	2 @ 4 (100) WITH 12 (300) DIAGONALS @ 45° NO DIAGONALS USED FOR 4' (1.2 m) WIDE MEDIANS	SOLID	YELLOW: TWO WAY TRAFFIC WHITE: ONE WAY TRAFFIC	11 (280) C-C FOR THE DOUBLE LINE SEE TYPICAL PAINTED MEDIAN MARKING.
GORE MARKING AND CHANNELIZING LINES	8 (200) WITH 12 (300) DIAGONALS @ 45°	SOLID	WHITE	DIAGONALS: 15' (4.5 m) C-C (LESS THAN 30MPH (50 km/h)) 20' (6 m) C-C 30MPH (50 km/h) TO 45MPH (70 km/h) 30' (9 m) C-C (OVER 45MPH (70 km/h))
RAILROAD CROSSING	24 (600) TRANSVERSE LINES; "RR" 15' (4.5 m) LINE FOR "X" LETTERS: 16 (400) LINE FOR "X"	SOLID	WHITE	SEE STATE STANDARD 780001 AREA OF: "R": 3.6 SQ. FT. (0.33 m ²) EACH "X": 54.0 SQ. FT. (5.0 m ²)
SHOULDER DIAGONALS	12 (300) @ 45°	SOLID	WHITE - RIGHT YELLOW - LEFT	50' (15 m) C-C (LESS THAN 30MPH (50 km/h)) 75' (25 m) C-C (30 MPH (50 km/h) TO 45MPH (70 km/h)) 150' (45 m) C-C (OVER 45MPH (70 km/h))

FOR FURTHER DETAILS ON PAVEMENT MARKING REFER TO STANDARD SPECIFICATIONS FOR ROAD AND BRIDGE CONSTRUCTION AND STATE STANDARD 780001.

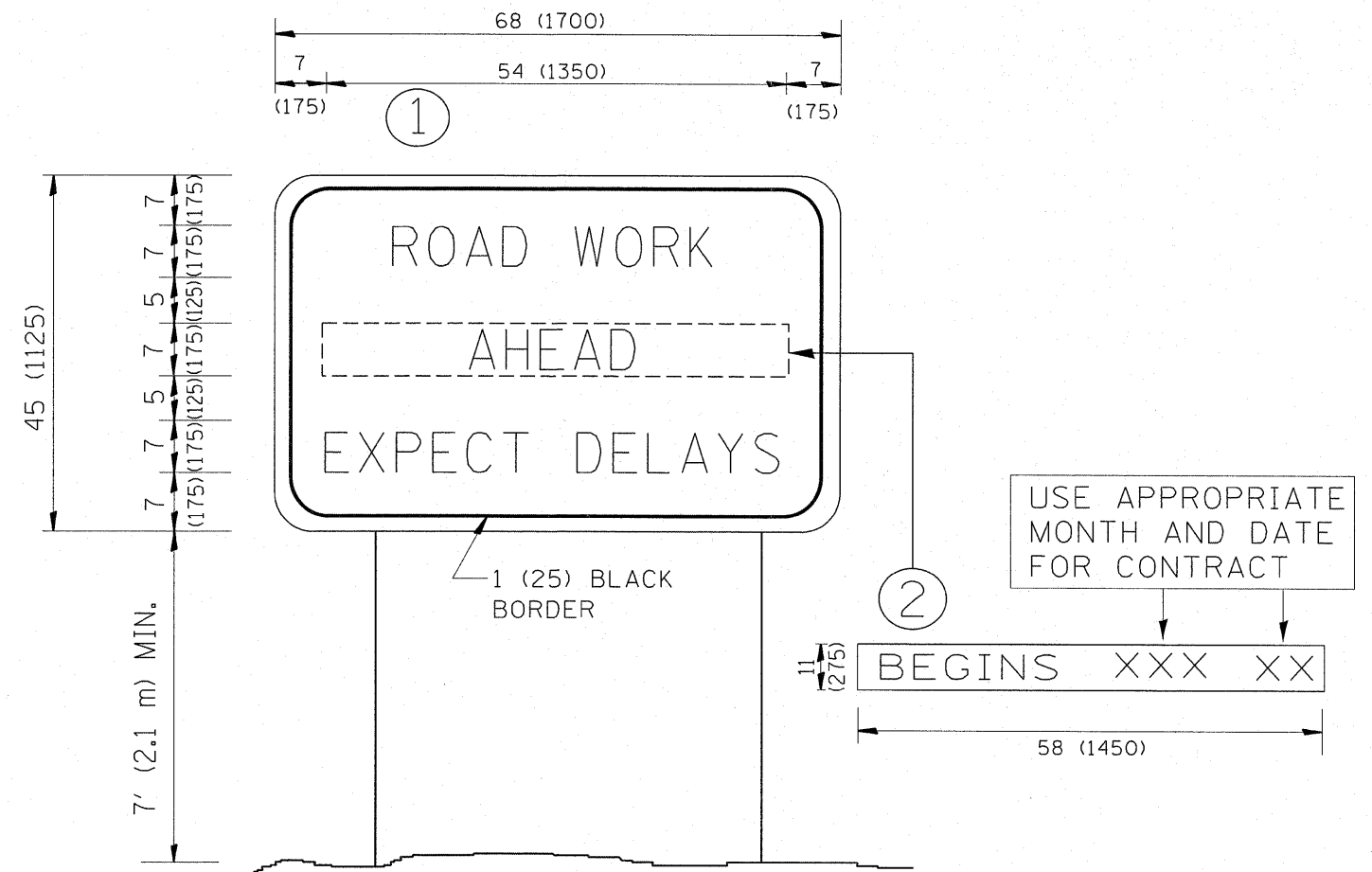
All dimensions are in inches (millimeters) unless otherwise shown.

FILE NAME =	USER NAME = abreuah	DESIGNED - EVERS	REVISED - T. RAMMACHER 10-27-94
es:\pw\work\p\dot\abreuah\02241076\DistStd.dgn		DRAWN -	REVISED - C. JUCIUS 09-09-09
PLOT SCALE = 50.7684 1 / IN.		CHECKED -	REVISED -
PLOT DATE = 3/15/2011		DATE - 03-19-90	REVISED -

**STATE OF ILLINOIS
DEPARTMENT OF TRANSPORTATION**

**DISTRICT ONE
TYPICAL PAVEMENT MARKINGS**

SCALE: NONE	SHEET NO. 1 OF 1 SHEETS	STA. TO STA.	F.A.P. RTE. 339	SECTION 2010-113-1	COUNTY COOK	TOTAL SHEETS 11	SHEET NO. 9
			TC-13		CONTRACT NO. 60M47		
			FED. ROAD DIST. NO. 1 ILLINOIS FED. AID PROJECT				

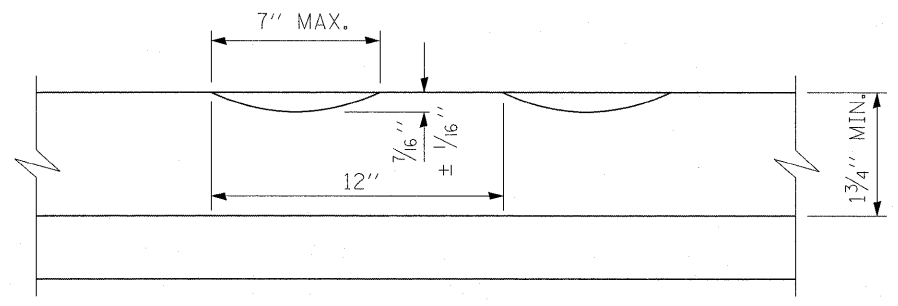


NOTES:

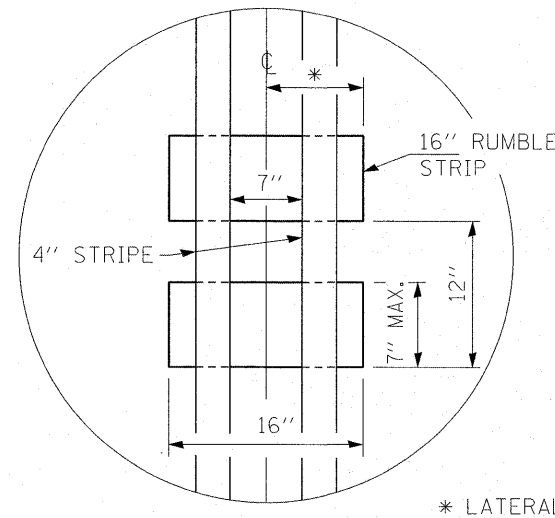
1. USE BLACK LETTERING ON ORANGE BACKGROUND.
2. ERECT SIGNS IN ADVANCE OF THE LOCATION FOR THE "ROAD CONSTRUCTION AHEAD" SIGN AT LOCATIONS AS DIRECTED BY THE ENGINEER.
3. ERECT SIGN ① WITH INSTALLED PANEL ② ONE WEEK PRIOR TO THE START OF CONSTRUCTION.
4. REMOVE PANEL ② SOON AFTER THE START OF CONSTRUCTION.
5. SEE SPECIAL PROVISION FOR "TEMPORARY INFORMATION SIGNING" FOR ADDITIONAL INFORMATION.
6. ONE SIGN ASSEMBLY EQUALS 25.70 SQ. FT. (2.3 SQ. M.)
7. SHALL BE PAID FOR AS TEMPORARY INFORMATION SIGNING.

ALL DIMENSIONS ARE IN INCHES (MILLIMETERS) UNLESS OTHERWISE SHOWN.

FILE NAME =	USER NAME = abreuh	DESIGNED -	REVISED - R. MIRS 09-15-97	STATE OF ILLINOIS DEPARTMENT OF TRANSPORTATION	ARTERIAL ROAD INFORMATION SIGN	F.A.P. RTE.	SECTION	COUNTY	TOTAL SHEETS	SHEET NO.
cd:\pw_work\pwidot\abreuh\d0241076\Dist\	DRAWN -	REVISED - R. MIRS 12-11-97	339			2010-113-1	COOK	11	10	
PLOT SCALE = 50.7684 / IN.	CHECKED -	REVISED - T. RAMMACHER 02-02-99	TC-22			CONTRACT NO. 60M47				
PLOT DATE = 3/15/2011	DATE -	REVISED - C. JUCIUS 01-31-07	SCALE: NONE			SHEET NO. 1 OF 1 SHEETS	STA.	TO STA.	FED. ROAD DIST. NO. 1 ILLINOIS FED. AID PROJECT	

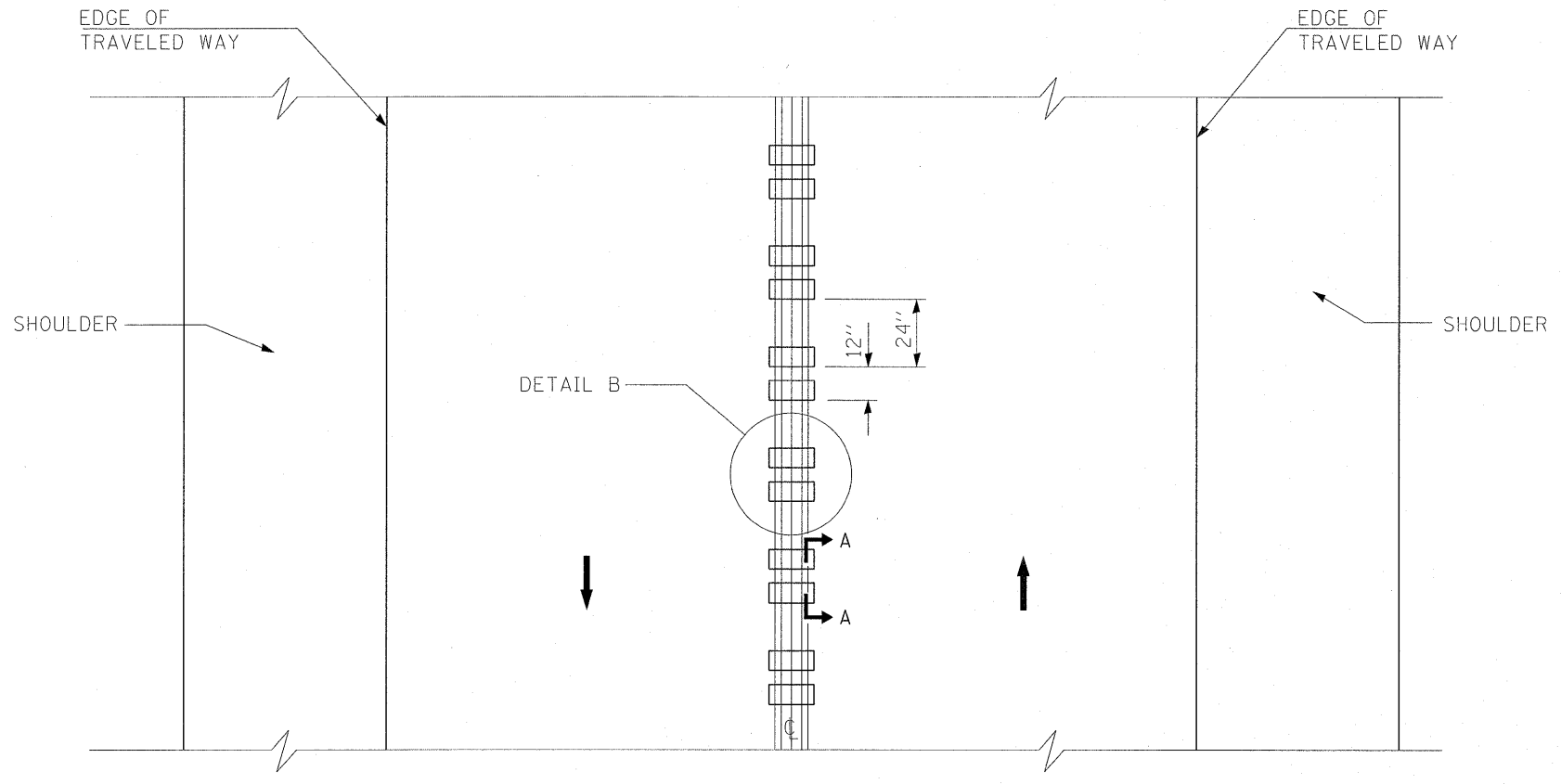


SECTION A-A



* LATERAL DEVIATION SHALL NOT EXCEED ONE INCH IN 100 FEET.

DETAIL B



TWO-WAY ROAD

GENERAL NOTES
 SEE STANDARD 780001 FOR OTHER STRIPING LAYOUTS.
 RUMBLE STRIPS SHALL NOT BE PLACED ON BRIDGES.
 ALL RUMBLE STRIPS SHALL BE MILLED.
 CENTERLINE RUMBLE STRIPS SHALL BE CONTINUOUS THROUGH CONNECTIONS OF SIDEROADS WITH NO LEFT TURN LANES.
 DISCONTINUE CENTERLINE RUMBLE STRIPS THROUGH THE LIMITS OF ALL LEFT TURN LANES, INCLUDING ANY LANE TAPER SECTIONS.
 WHERE USED, ADJUST SPACING OF RAISED REFLECTIVE PAVEMENT MARKERS TO FALL IN WIDER GAP BETWEEN RUMBLE STRIPS.

FILE NAME = c:\pw_work\pwidot\obreuah\d0241076\DI119	USER NAME = obreuah	DESIGNED - DRAWN -	REVISED - REVISED -	STATE OF ILLINOIS DEPARTMENT OF TRANSPORTATION	RUMBLE STRIPES FOR CENTERLINE, NON-FREEWAY	F.A.P. RTE. 339	SECTION 2010-113-1	COUNTY COOK	TOTAL SHEETS 11	SHEET NO. 11		
PLOT SCALE = 50.7684' / IN.		CHECKED -	REVISED -			SCALE: SHEET NO. OF SHEETS STA. TO STA.		CONTRACT NO. 60M47				
PLOT DATE = 3/15/2011		DATE -	REVISED -			ILLINOIS FED. AID PROJECT						