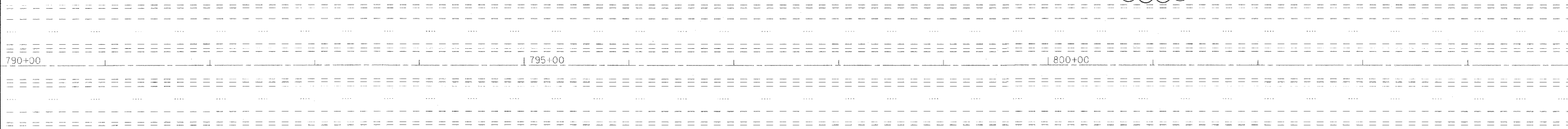
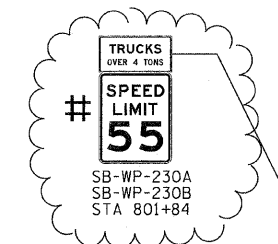


MATCH LINE STA. 790+00 SEE SHT 49

MATCH LINE STA. 805+00 SEE ABOVE RIGHT



I-55



**GUIDE SIGN SEQUENCE  
NUMBERING CODE  
EXAMPLE**

**DIRECTION OF TRAFFIC**

- NB - NORTHBOUND I-55
- SB - SOUTHBOUND I-55
- R\*\* - RAMP A - AF
- KEN - KENNEDY ROAD
- I13 - ILLINOIS ROUTE 113
- LOR - LORENZO ROAD
- NRR - NORTH RIVER ROAD
- ARS - ARSENAL ROAD
- BLF - BLUFF ROAD
- US6 - U.S. ROUTE 6

**MOUNTING TYPE**

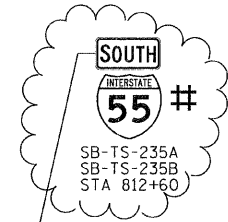
- TR - TRUSS
- CL - CANTILEVER
- TS - TELESCOPING STEEL POST
- WP - WOOD POST
- MP - METAL POST
- PM - POLE MOUNTED
- GM - GROUND MOUNTED

**EXAMPLE**

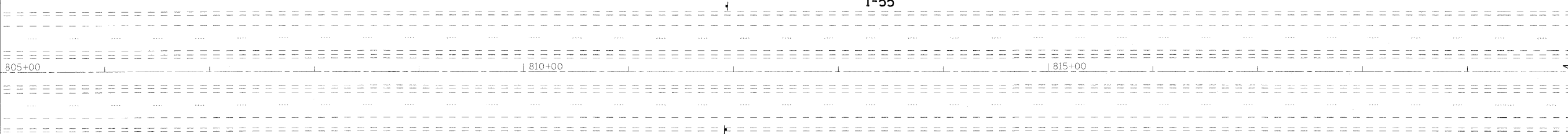
NB - TR - 100

**LEGEND**

- REMOVE AND REPLACE SIGN PANEL
- EXISTING LUMINAIRE TO BE REMOVED
- REMOVE SIGN PANEL & SUPPORT (NO REPLACEMENT)
- \* NEW SIGN PANEL AND SUPPORT(S)
- # REMOVE AND REPLACE SIGN PANEL WITH NEW SUPPORT(S)



I-55



COPYRIGHT © 2009 BY BAXTER & WOODMAN, INC.  
 STATE OF ILLINOIS PROFESSIONAL DESIGN FIRM  
 231 W. MONROE STREET, SUITE 200, CHICAGO, IL 60606  
 312.464.4200 FAX 312.464.4201  
 5/27/2011 9:46:42 PM C:\Users\jwoodman\Documents\DRAWINGS\CONTRACTS\060600-01\plan.dgn



USER NAME = 231ukb	DESIGNED - DJS	REVISED - 5-27-11 ADD.1
	DRAWN - LKB	REVISED -
PLOT SCALE = 50.0000' / IN.	CHECKED - RWL	REVISED -
PLOT DATE = 5/27/2011	DATE - 11-8-10	REVISED -

**STATE OF ILLINOIS  
DEPARTMENT OF TRANSPORTATION**

IL. ROUTE 55  
GRUNDY COUNTY LINE TO US 6  
SCALE: 1"=50' SHEET NO. OF SHEETS STA. 790+00 TO STA. 820+00

F.A.I. RTE. 55	SECTION 2010-114-SG	COUNTY WILL	TOTAL SHEETS 115	SHEET NO. 50
FED. ROAD DIST. NO. 1 ILLINOIS FED. AID PROJECT			CONTRACT NO. 60M48	

*Rev. Sheet 6-7-11*

MATCH LINE STA. 805+00 SEE BELOW LEFT