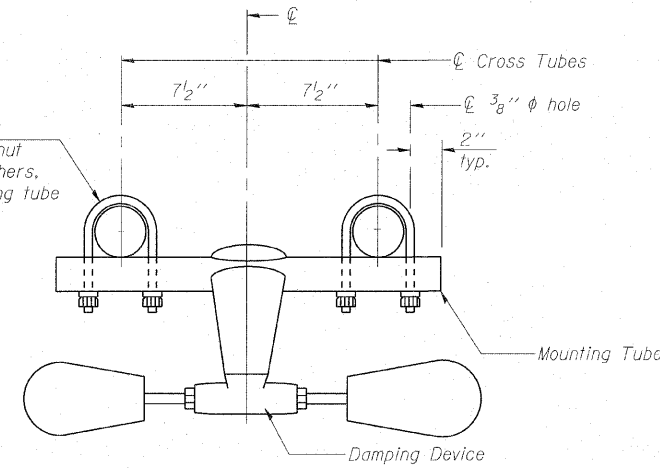
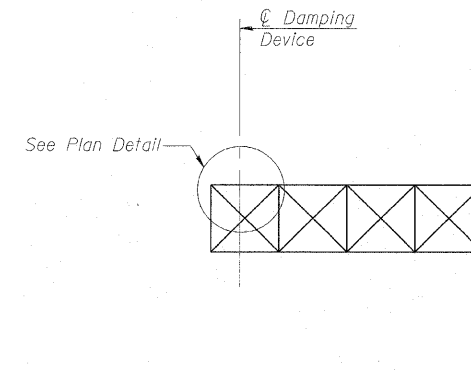


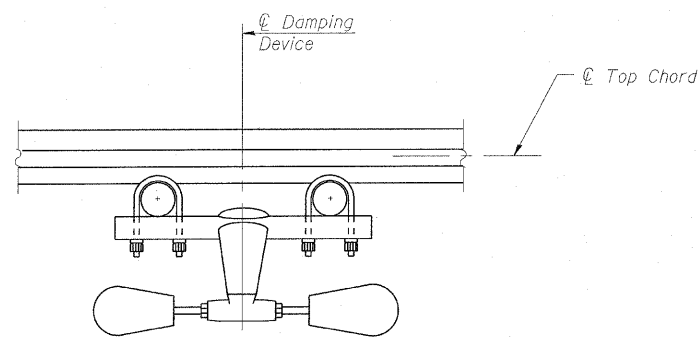
PLAN DETAIL



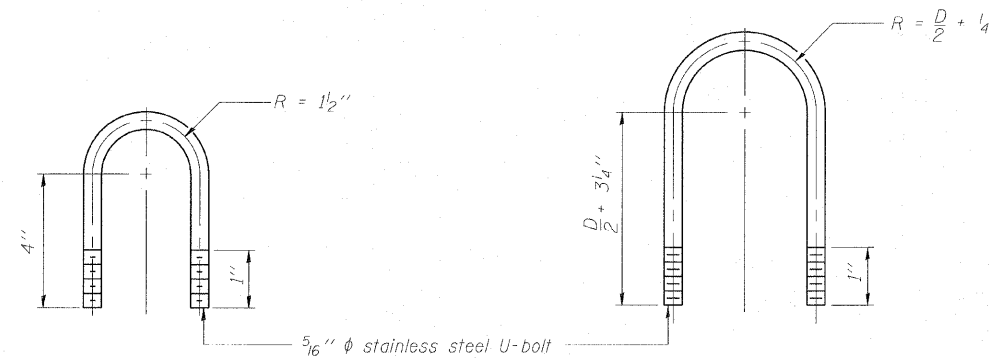
TRUSS DAMPING DEVICE CONNECTION DETAIL



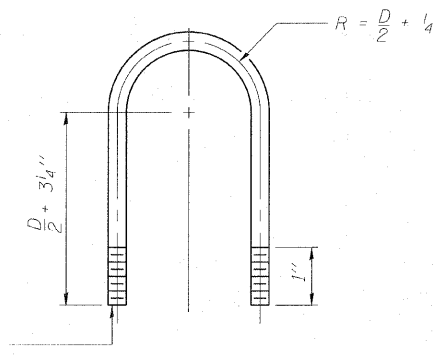
ELEVATION
Aluminum Cantilever Sign Structure



SECTION A-A



DAMPING DEVICE MOUNTING TUBE U-BOLT DETAIL
(Typical)



TOP CHORD TO CROSS TUBE U-BOLT DETAIL
(Typical)

GENERAL NOTES

- Damper: One damper per truss. (31 lbs. Stockbridge-Type Aluminum-29" minimum between ends of weights)
- Materials: Aluminum tubes shall be ASTM B221 alloy 6061 temper T6
- Refer to existing drawings for member sizes.
- Verify all dimensions in the field prior to order materials.

COPYRIGHT © 2010 BY BAXTER & WOODMAN, INC. ...
 LICENSE NO. ...
 4/24/2010

OSC-A-D

1-20-11

FILE NAME =	USER NAME =	DESIGNED - BLB	REVISIONS	STATE OF ILLINOIS OVERHEAD SIGN REHABILITATION	CANTILEVER SIGN STRUCTURE DAMPING DEVICE	FBI	SECTION	COUNTY	TOTAL SHEETS	SHEET NO.	
		CHECKED - BAB	REVISIONS			55	2010-114-SG	WILL	115	92	
		DRAWN - BCD	REVISIONS			CONTRACT NO. 60M48					
		CHECKED - BLB	REVISIONS			SHEET NO. 2 OF 8 SHEETS					
						FED. ROAD DIST. NO. 1 ILLINOIS FED. AID PROJECT					