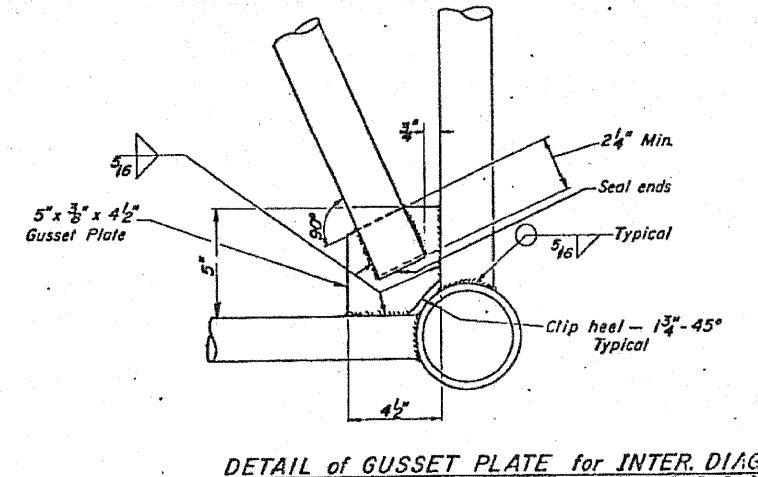
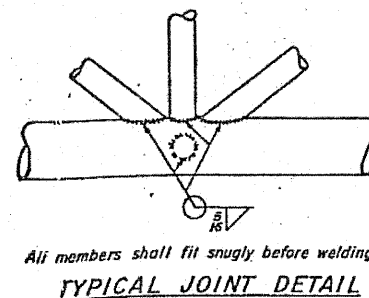
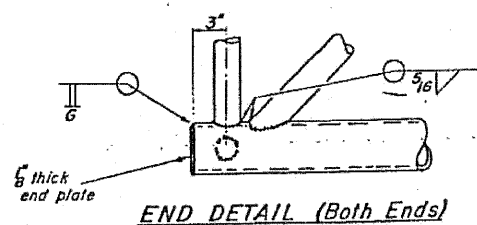
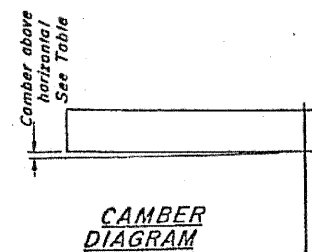
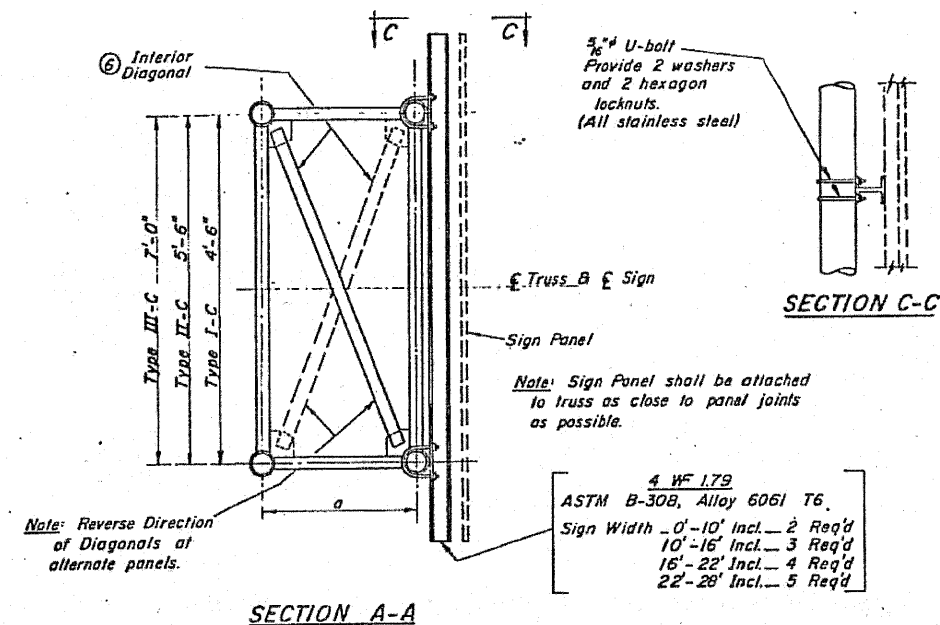
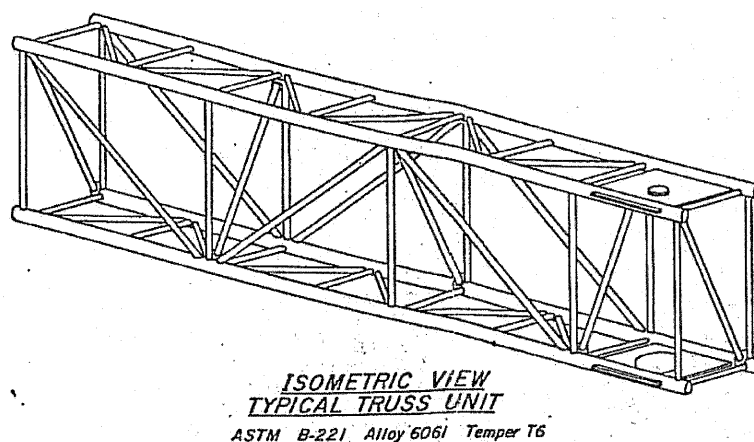
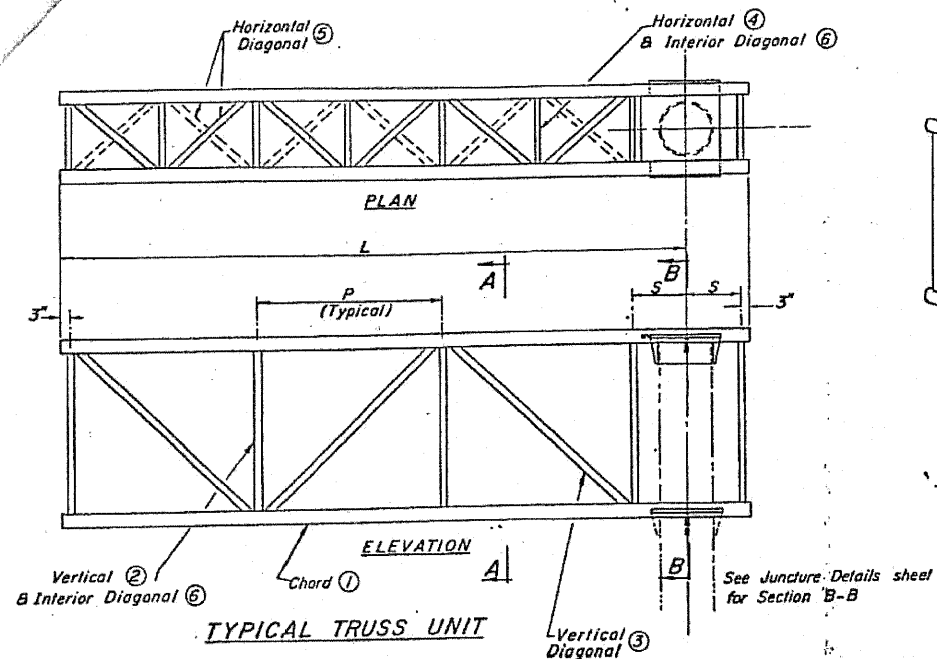


STATE OF ILLINOIS  
DEPARTMENT OF PUBLIC WORKS & BUILDINGS  
DIVISION OF HIGHWAYS

ROUTE NO.	SECTION	PROJECT	POST	SHEET	SHEET NO.
55	114-SG	DUPAGE, WILL	212	158	96
P.A. I 55		GRUNDY			
FED. ROAD DIST. NO. 1		ILLINOIS	FED. AID PROJECT		



Truss No.	Station	Post Type	Truss Type	Dim. (a)	Dim. (S)	Unit Lgth. (L)	No Panels per Unit	Panel Lgth. (P)	Top & Btm. Chord (1)		Vertical Diag. (2)		Horizontal Diag. (3)		Interior Diag. (4)		Camber	
									O.D. Wall	O.D. Wall	O.D. Wall	O.D. Wall	O.D. Wall	O.D. Wall	O.D. Wall	O.D. Wall		
CLN-1	1524+37	V	III C-A	36"	21"	35'	5	6'-7 1/4"	5 1/2	5 1/2	2 1/4	3 1/6	3 1/6	2	3 1/6	2	3 1/6	3
CLS-1	1281 + 22	V	III C-A	36"	21"	35'	5	6'-7 1/4"	5 1/2	5 1/2	2 1/4	3 1/6	3 1/6	2	3 1/6	2	3 1/6	3
CLS-2	188+ 50	V	III C-A	36"	21"	35'	5	6'-7 1/4"	5 1/2	5 1/2	2 1/4	3 1/6	3 1/6	2	3 1/6	2	3 1/6	3
CLN-2	187+ 80	V	III C-A	36"	21"	35'	5	6'-7 1/4"	5 1/2	5 1/2	2 1/4	3 1/6	3 1/6	2	3 1/6	2	3 1/6	3
CLS-3	445+40	V	III CA	36"	21"	35'	5	6'-7 1/4"	5 1/2	5 1/2	2 1/4	3 1/6	3 1/6	2	3 1/6	2	3 1/6	3
CLS-4	486+80	V	III CA	36"	21"	35'	5	6'-7 1/4"	5 1/2	5 1/2	2 1/4	3 1/6	3 1/6	2	3 1/6	2	3 1/6	3
CLN-3	614+65	V	III CA	36"	21"	35'	5	6'-7 1/4"	5 1/2	5 1/2	2 1/4	3 1/6	3 1/6	2	3 1/6	2	3 1/6	3
CLS-5	793+40	V	III CA	36"	21"	35'	5	6'-7 1/4"	5 1/2	5 1/2	2 1/4	3 1/6	3 1/6	2	3 1/6	2	3 1/6	3
CLN-4	799+70	V	III CA	36"	21"	35'	5	6'-7 1/4"	5 1/2	5 1/2	2 1/4	3 1/6	3 1/6	2	3 1/6	2	3 1/6	3
CLN-5	902+36	V	III CA	36"	21"	35'	5	6'-7 1/4"	5 1/2	5 1/2	2 1/4	3 1/6	3 1/6	2	3 1/6	2	3 1/6	3
CLS-6	904+40	V	III C-A	36"	21"	35'	5	6'-7 1/4"	5 1/2	5 1/2	2 1/4	3 1/6	3 1/6	2	3 1/6	2	3 1/6	3
CLN-6	988+30	V	III CA	36"	21"	35'	5	6'-7 1/4"	5 1/2	5 1/2	2 1/4	3 1/6	3 1/6	2	3 1/6	2	3 1/6	3

DESIGNED	EXAMINED	19
CHECKED	PASSED	
DRAWN Wm. M. Best	APPROVED	
CHECKED		

Existing Structure Data

OVERHEAD SIGN STRUCTURES - CANTILEVER TRUSS DETAILS ALUMINUM TRUSS & STEEL POST

FOR INFORMATION ONLY

COPYRIGHT © 2010 BY BAXTER & WOODMAN, INC.  
 ALL RIGHTS RESERVED. NO PART OF THIS PUBLICATION  
 MAY BE REPRODUCED OR TRANSMITTED IN ANY FORM  
 OR BY ANY MEANS, ELECTRONIC OR MECHANICAL,  
 INCLUDING PHOTOCOPYING, RECORDING, OR BY  
 INFORMATION STORAGE AND RETRIEVAL SYSTEMS.  
 44-2010