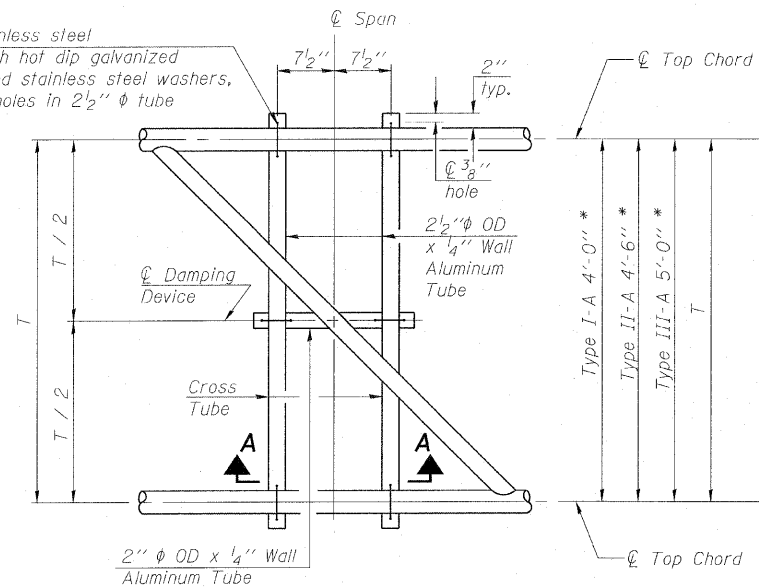
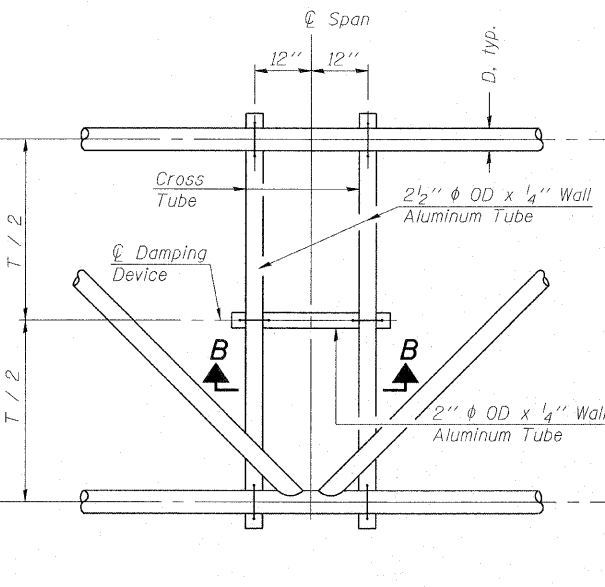


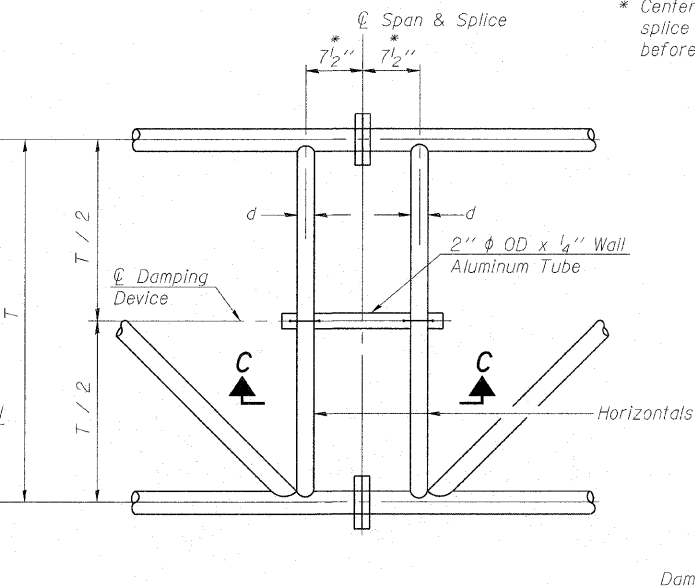
5/16" φ stainless steel
U-bolt with hot dip galvanized
locknuts and stainless steel washers,
typ. 3/8" φ holes in 2 1/2" φ tube



PLAN DETAIL "A"
Span between Panel Points



PLAN DETAIL "B"
Span at Panel Point

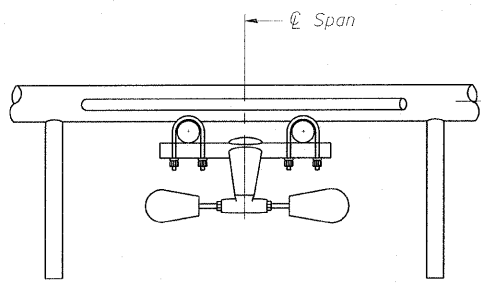


PLAN DETAIL "C"
Span at Chord Splice

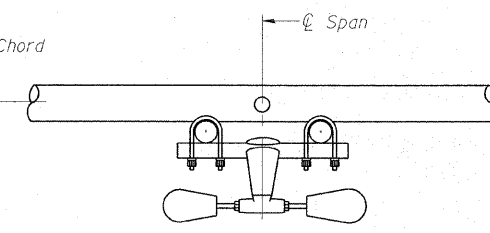
* Center of horizontal to center of
splice dimension may vary. Verify
before drilling holes in mounting tube.

NOTES

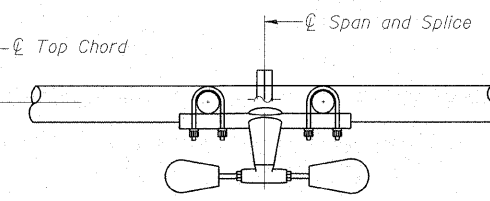
- Damper: One damper per truss. (31 lbs. minimum Stockbridge-Type Aluminum - 29" minimum between ends of weights) Cost included in Overhead Sign Structure...
- Materials: Materials: Aluminum tubes shall be ASTM B221 alloy 6061 temper T6. Cost included in Overhead Sign Structure...
- Refer to existing plans for member sizes.
- Verify all dimensions in the field prior to ordering materials.



SECTION A-A

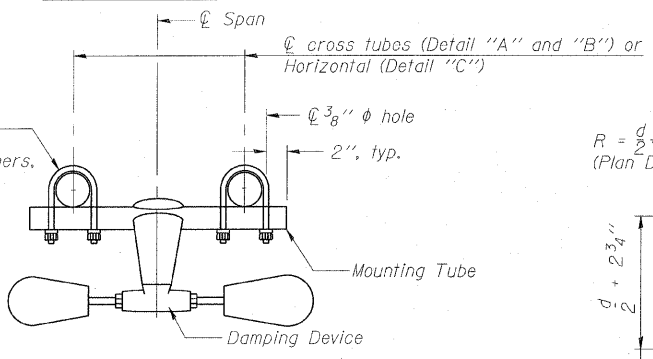


SECTION B-B

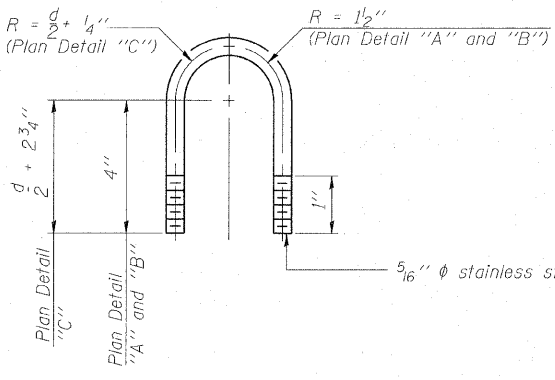


SECTION C-C

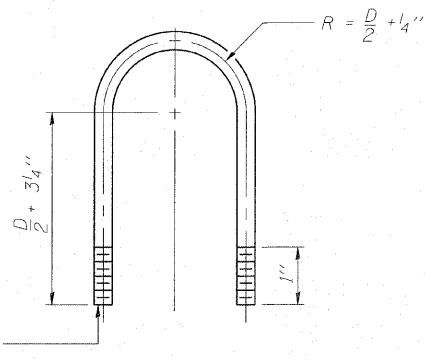
5/16" φ stainless steel
U-bolt with hot dip galvanized
locknuts and stainless steel washers,
typ. 3/8" φ holes in mounting tube



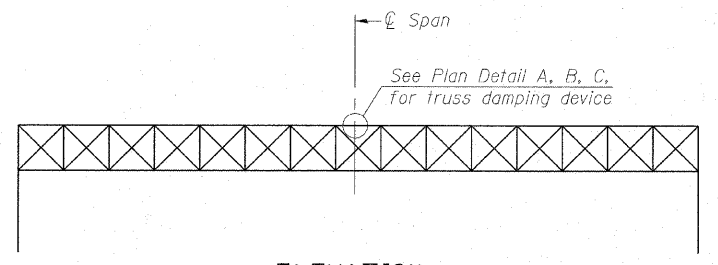
**TRUSS DAMPING
DEVICE CONNECTION DETAIL**
(Typical)



**DAMPING DEVICE MOUNTING
TUBE U-BOLT DETAIL**
(Typical)



**TOP CHORD TO CROSS TUBE
U-BOLT DETAIL**
(Typical - Detail "A" and "B")



ELEVATION
Aluminum Overhead
Sign Truss

COPYRIGHT © 2010 BY BAXTER & WOODMAN, INC.
 ALL RIGHTS RESERVED. ILLUSTRATION BY
 LICENSE NO. 198-001015 EXP. 01/31/11
 6/24/2010

OS-A-D

1-20-11

FILE NAME =	USER NAME =	DESIGNED - BLB	REVISIONS -
		CHECKED - BAB	REVISIONS -
PLOT SCALE =		DRAWN - BCD	REVISIONS -
PLOT DATE =		CHECKED - BLB	REVISIONS -

**STATE OF ILLINOIS
OVERHEAD SIGN REHABILITATION**

**OVERHEAD SIGN STRUCTURE
DAMPING DEVICE**

SHEET NO. 2 OF 11 SHEETS

FBI RTE	SECTION	COUNTY	TOTAL SHEETS	SHEET NO.
55	2010-114-SG	WILL	115	100
CONTRACT NO. 60M48				
FED. ROAD DIST. NO. 1 ILLINOIS FED. AID PROJECT				