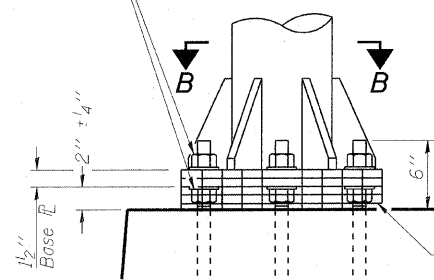
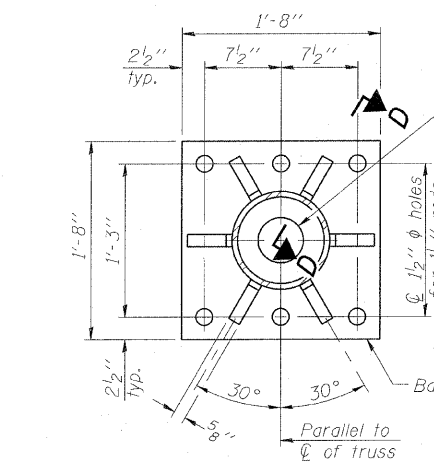


Hexagon locknut and washer (top), leveling nut and washer (bottom). Galvanize per AASHTO M232. Nuts shall each be tightened against base plate with 200 lb.-ft. minimum torque.



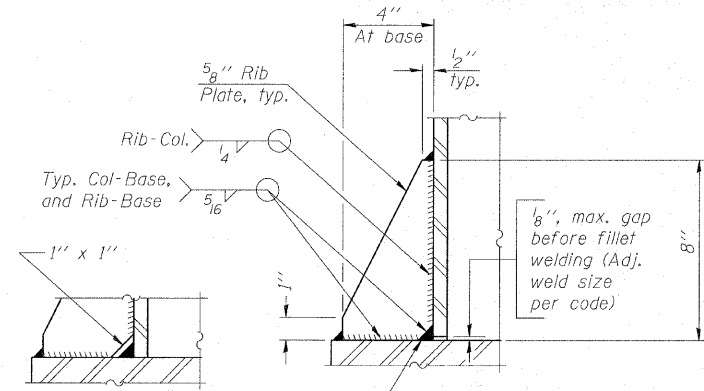
**DETAIL B**

Ribs shall be cut to fit slope of pipe. Stainless Steel Standard Grade Wire Cloth, 3" wide, 1/4" maximum opening with a minimum wire diameter of AWG. No. 16 with a minimum 2" lap. Secure to base plate after erection with 3/4" stainless steel banding.



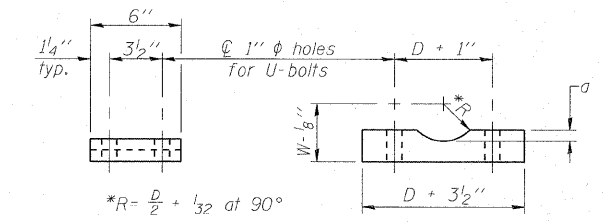
**SECTION B-B**

6" hole in each base plate. Base plate 1/2" x 1'-8" x 1'-8". Parallel to center of truss. 30° angle. 5/8" dimension.



**SECTION D-D**

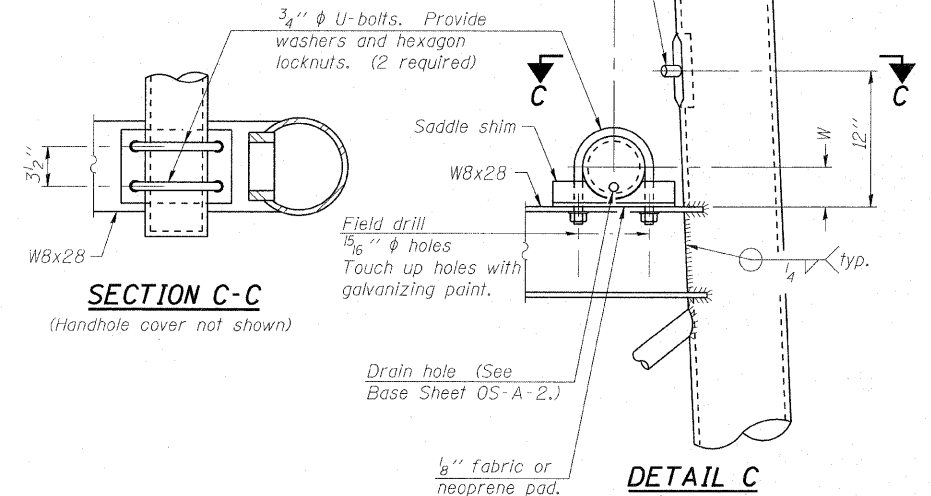
\*\* Alternate detail if welding col. to base plate first, then snip inside corner of ribs. Terminate weld on rib 1/4" from snip. No snip req'd. at rib inside corner if placed before col. to base plate welding. \*\*



**SADDLE SHIM DETAIL**

ASTM B26 Alloy 356-F or ASTM B209 Alloy 6061-T651 (4 required per sign truss). \*R = D/2 + 1/32 at 90°. D = Outside Diameter of Chord. For W, see Base Sheet OS-A-6.

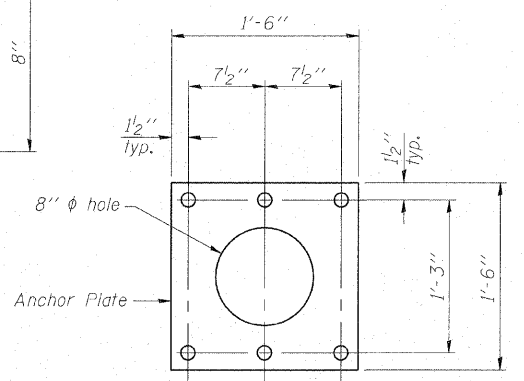
Truss Chord Nominal Dia.	a
5"	3/4"
5 1/2"	13/16"
6"	7/8"
6 1/2"	15/16"
7"	1"



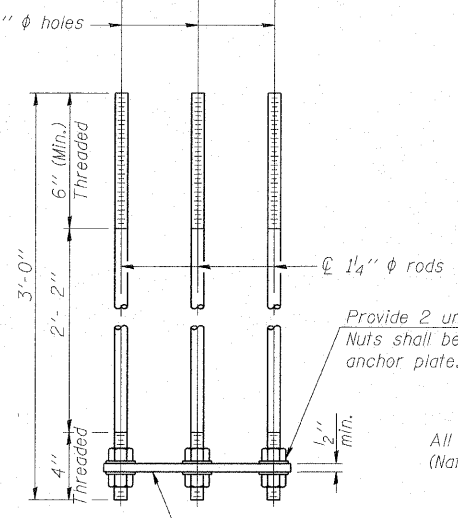
**SECTION C-C**

(Handhole cover not shown)

**DETAIL C**



**Anchor Plate**

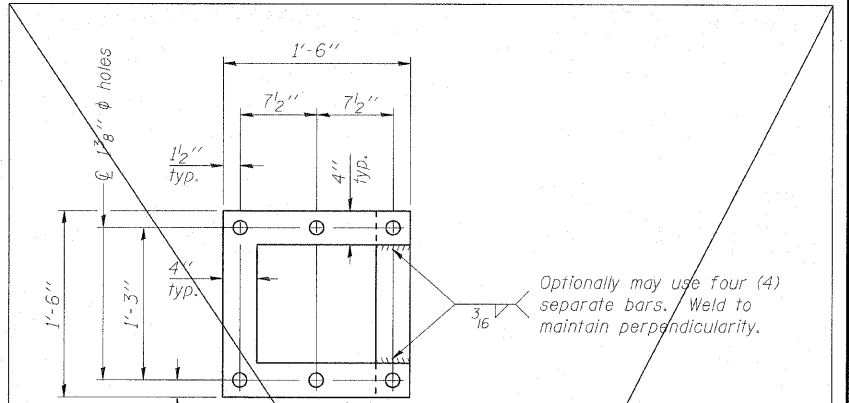


**ANCHOR ROD DETAIL**  
Spread Footing Foundation

Provide 2 uncoated nuts per rod. Nuts shall be "snug tight" against anchor plate.

All Thread = NC (National Coarse)

Anchor rods shall conform to ASTM F1554 Grade 105. Galvanize upper 12" minimum per AASHTO M232. No welding shall be permitted on rods.

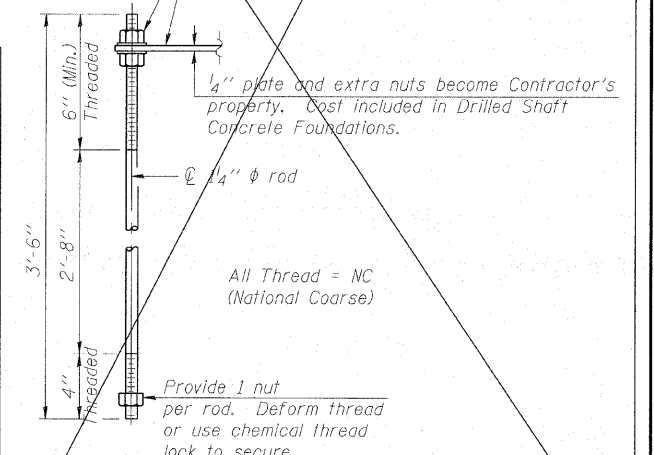


**POSITIONING PLATE(S)**

Optionally may use four (4) separate bars. Weld to maintain perpendicularity.

At each location, provide 1/4" thick positioning plate(s) and six (6) additional nuts to be used with leveling nuts to maintain anchor bolts position during concrete placement.

1/4" plate and extra nuts become Contractor's property. Cost included in Drilled Shaft Concrete Foundations.



**ANCHOR ROD DETAIL**  
Drilled Shaft Foundation

All Thread = NC (National Coarse)

Provide 1 nut per rod. Deform thread or use chemical thread lock to secure.

**10" PIPE SUPPORT FRAME DETAILS**

COPYRIGHT © 2010 BY BAXTER & WOODMAN, INC. ...  
 LICENSE NO. 002-0002 EXP. DATE 02/21/2011  
 4/24/2011

OS-A-6A 1-20-11

FILE NAME =	USER NAME =	DESIGNED - BLB	REVISED -
		CHECKED - BAB	REVISED -
PLOT SCALE =		DRAWN - BCD	REVISED -
PLOT DATE =		CHECKED - BLB	REVISED -

STATE OF ILLINOIS  
OVERHEAD SIGN REHABILITATION

OVERHEAD SIGN STRUCTURES  
SUPPORT FRAME DETAILS - ALUMINUM TRUSS

SHEET NO. 4 OF 11 SHEETS

FAI RTE	SECTION	COUNTY	TOTAL SHEETS	SHEET NO.
55	2010-114-SG	WILL	115	102
				CONTRACT NO. 60M48
FED. ROAD DIST. NO. 1   ILLINOIS FED. AID PROJECT				