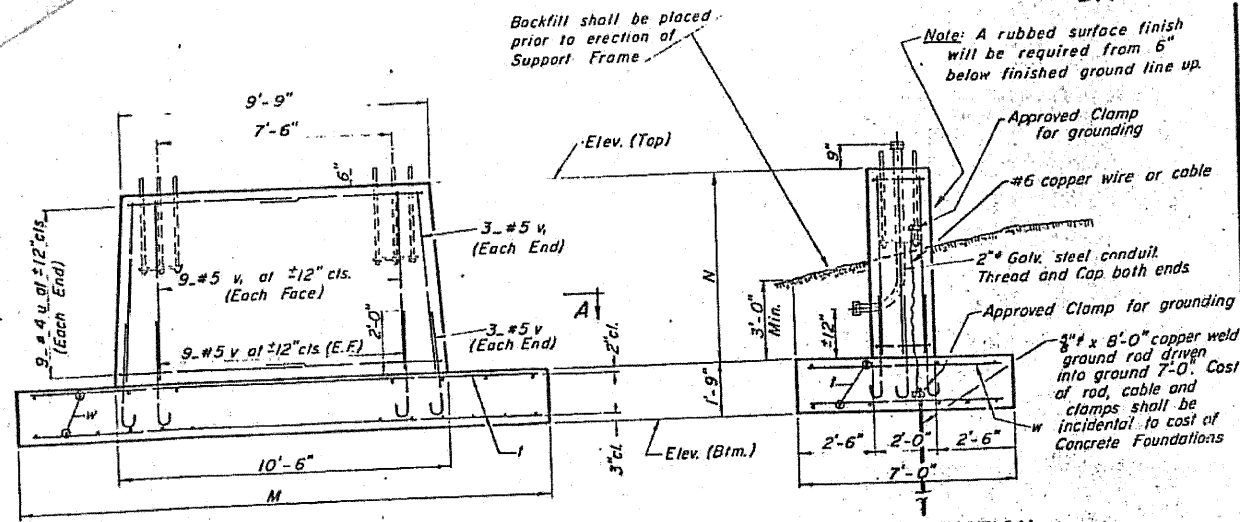


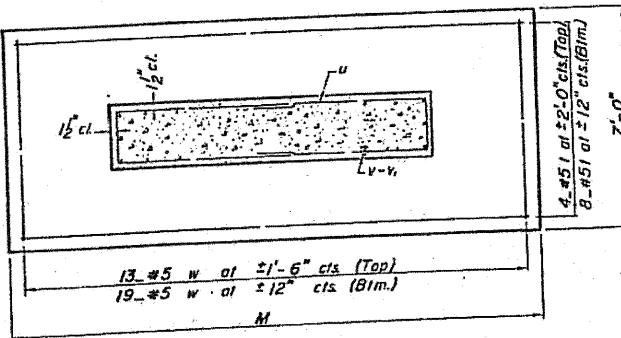
STATE OF ILLINOIS
DEPARTMENT OF PUBLIC WORKS & BUILDINGS
DIVISION OF HIGHWAYS

PROJECT NO.	DATE	DESIGNED BY	SCALE	SHEET NO.
111 55	02/17/01	DUPAGE, WILL	2/12	176
DESIGNED BY	DATE	SCALE	SHEETS	
			176	

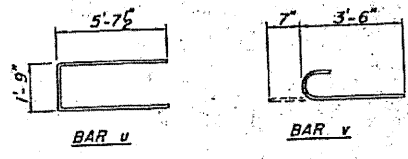


SIDE ELEVATION

FRONT ELEVATION



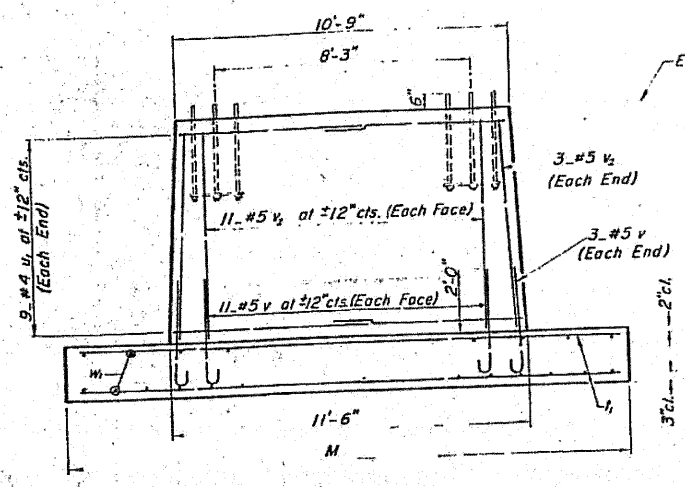
SECTION A-A



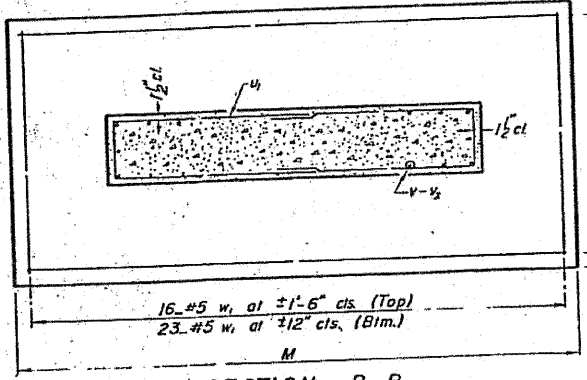
BAR LIST - EACH FOUNDATION

Bar	No.	Size	Lgth.	Shape
l	12	#5	#	—
u	18	#4	13'-0"	—
v	24	#5	4'-1"	C
v ₁	24	#5	#	—
w	32	#5	6'-9"	—

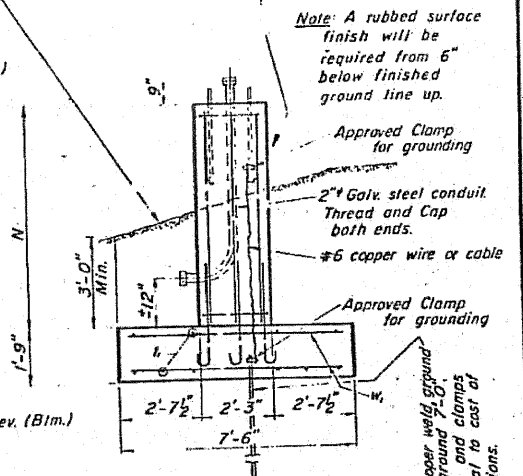
*Length of l bar = (Dim. M) - 6"
v₁ bar = (Dim. N) - 3"



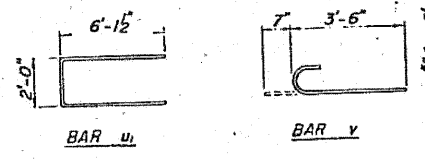
SIDE ELEVATION



SECTION B-B



FRONT ELEVATION



BAR LIST - EACH FOUNDATION

Bar	No.	Size	Lgth.	Shape
l	12	#5	#	—
u	18	#4	14'-3"	—
v	28	#5	4'-1"	C
v ₁	28	#5	#	—
w	39	#5	7'-3"	—

*Length of l bar = (Dim. M) - 6"
v₁ bar = (Dim. N) - 3"

Truss No.	Station	Left Foundation			Right Foundation			M	Class X Conc.
		Elev. Top	Elev. Btm.	N	Elev. Top	Elev. Btm.	N		
TRN-1	1563+75	99.21	91.29	6'-2"	99.21	89.71	7'-9"	19'-6"	32.0
TRS-2	1538+30	101.71	94.46	5'-6"	101.71	90.71	9'-3"	17'-6"	30.7
TRS-3	1507+00	99.83	92.58	5'-6"	99.83	91.83	6'-3"	18'-6"	28.9
TRN-2	1150+25	98.08	90.16	6'-2"	98.08	90.16	6'-2"	19'-6"	30.4
TRN-6	469+40	99.62	91.54	6'-4"	99.62	91.54	6'-4"	18'-0"	29.3
TRS-7	623+65	100.00	91.75	6'-6"	100.00	92.08	6'-2"	18'-0"	29.3
TRN-11	1025+11	101.38	94.04	5'-7"	101.38	90.38	9'-3"	19'-0"	32.2
TRE-2	625+00	98.92	91.59	5'-7"	98.92	90.17	7'-0"	20'-0"	31.1
TRW-2	649+20	99.31	92.06	5'-6"	99.31	90.90	6'-6"	20'-3"	31.0

Existing Structure Data

FOUNDATION DETAILS
for 8" Std. PIPE SUPPORT

FOUNDATION DETAILS
for 10" Std. PIPE SUPPORT

OVERHEAD SIGN STRUCTURES
FOUNDATION DETAILS

FOR INFORMATION ONLY

DESIGNED	EXAMINED
CHECKED	PASSED
DRAWN	APPROVED

DESIGNED - BLB	REVISOR
CHECKED - BAB	REVISOR
DRAWN - BCD	REVISOR
CHECKED - BLB	REVISOR

STATE OF ILLINOIS
OVERHEAD SIGN REHABILITATION

EXISTING
PLAN

SHEET NO. 11 OF 11 SHEETS

FAI RTE	SECTION	COUNTY	TOTAL SHEETS	SHEET NO.
55	2010-114-SG	WILL	115	109
FED. ROAD DIST. NO. 1 ILLINOIS FED. AID PROJECT			CONTRACT NO. 60M48	

COPYRIGHT © 2000 BY BAXTER & WOODMAN, INC.
 STATE OF ILLINOIS - PROFESSIONAL DESIGN FIRM
 111 W. WASHINGTON ST., SUITE 1000, CHICAGO, IL 60601
 312.467.1000 FAX 312.467.1001