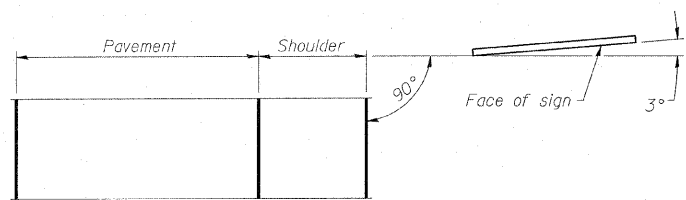
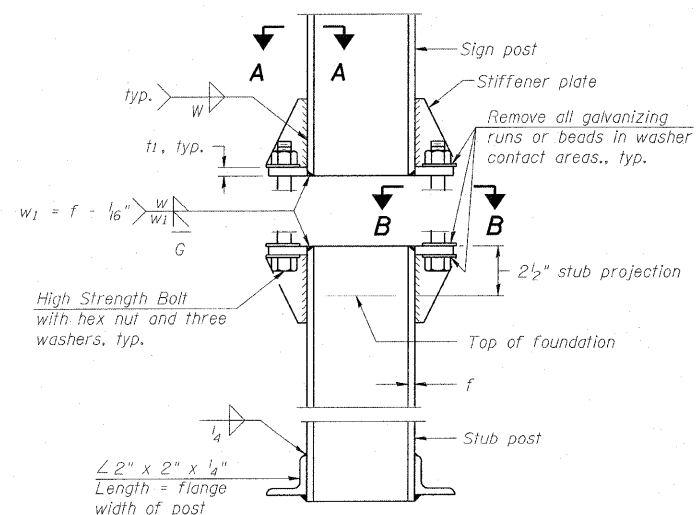


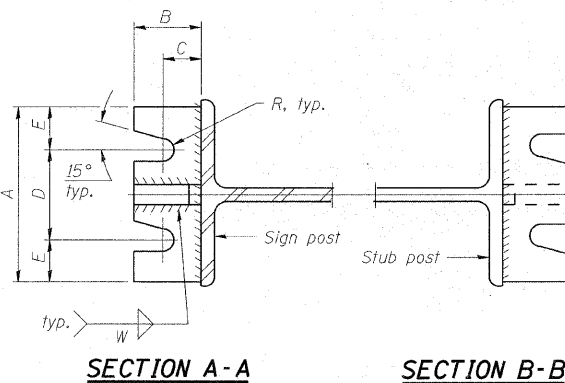
ELEVATION



LOCATION SKETCH

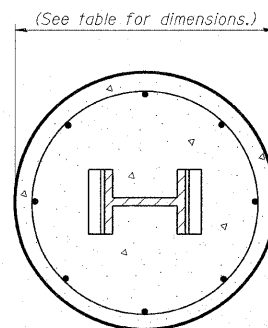


**ELEVATION
SIGN POST & STUB POST**

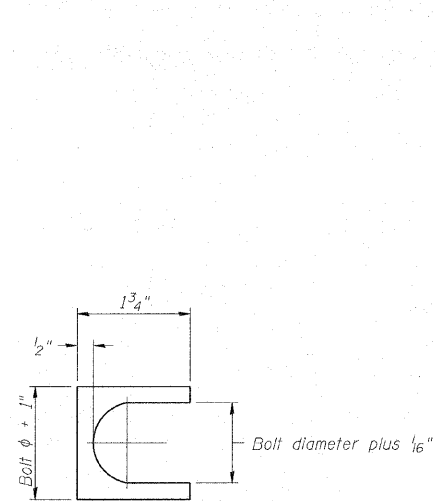


SECTION A-A

SECTION B-B

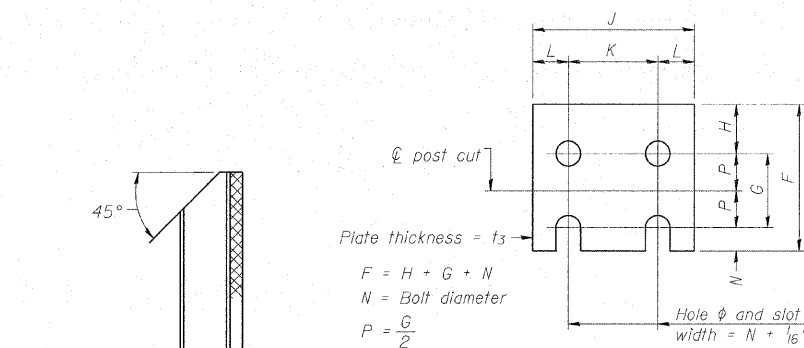


SECTION C-C



SHIM DETAIL

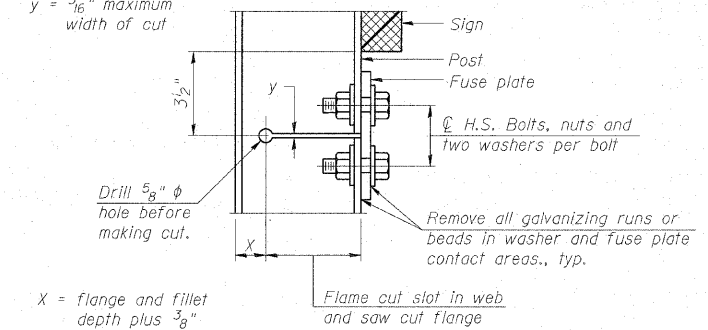
Furnish two 0.01" thick and two 0.03" thick stainless steel or brass (ASTM B36) shims per post.



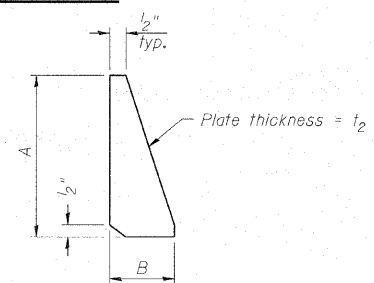
**FUSE PLATE DETAIL
(Install with notches down.)**

FUSE PLATE DATA		
N = Bolt Diameter	G	H
1/2"	2"	1 1/8"
5/8"	2 1/4"	1 1/4"
3/4"	2 1/2"	1 3/8"
7/8"	2 3/4"	1 1/2"
1"	3"	1 5/8"
1 1/8"	3 1/4"	1 3/4"
1 1/4"	3 1/2"	1 7/8"

y = 3/16" maximum width of cut



DETAIL H



STIFFENER PLATE DETAIL

GENERAL NOTES

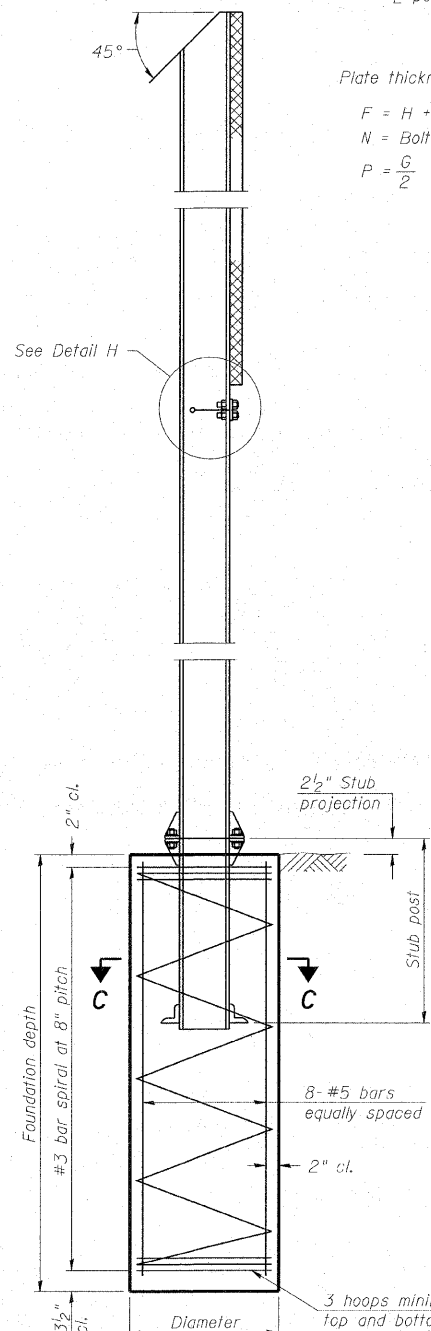
Posts shall be plumbed by using shims with post-to-stub post connection bolts snug tight only. Final tightening of all High Strength Bolts shall be in accordance with Article 727.05 and threads at the junction of the bolt and nut shall be burred or center punched to prevent the nut from loosening.

LOADING: 80 m.p.h. wind with 30% gust factor, normal to sign.

DESIGN STRESSES:
Structural steel - 20,000 p.s.i.
Reinforcing steel - 20,000 p.s.i.
Concrete - 1,400 p.s.i.
Footing soil pressure - 2,000 p.s.f.

After fabrication, the post, fuse plate and upper 6", min. of the stub post shall be hot-dip galvanized in accordance with AASHTO M111. All bolts, nuts and washers shall be hot-dip galvanized in accordance with AASHTO M232.

Work this sheet with Base Sheet BAW-A-2.



SECTION D-D

BAW-A-1

1-20-11

COPYRIGHT © 2005 BY BAXTER & WOODMAN, INC. ALL RIGHTS RESERVED. PROJECT NO. 05-001-001. DRAWING NO. BAW-A-1. DATE: 4/20/11. EXPIRES: 4/20/2011.



USER NAME = 231ukb	DESIGNED - DJS	REVISED -
PLOT SCALE = 4.5000 "/> <td>DRAWN - UKB</td> <td>REVISED -</td>	DRAWN - UKB	REVISED -
PLOT DATE = 4/4/2011	CHECKED - RWL	REVISED -
	DATE - 11-8-10	REVISED -

**STATE OF ILLINOIS
DEPARTMENT OF TRANSPORTATION**

**BREAK-AWAY WIDE FLANGE
STEEL SIGN POST DETAILS**
(Sheet 1 of 2)

SCALE: SHEET NO. OF SHEETS STA. TO STA.

F.A.I. RTE. 55	SECTION 99 (1&2) RS-11	COUNTY WILL	TOTAL SHEETS 115	SHEET NO. 110
CONTRACT NO. 60153				ILLINOIS FED. AID PROJECT