



INDEX OF SHEETS

SHEET NO.	DESCRIPTION
1	COVER SHEET
2	INDEX, GENERAL NOTES AND HIGHWAY STANDARDS
3	SUMMARY OF QUANTITIES
4	SCHEDULE OF QUANTITIES
5	TYPICAL SECTIONS
6-10	ROADWAY AND PAVEMENT MARKING PLANS
11-12	RUMBLE STRIPE DETAILS
13	DETAILS FOR DEPRESSED CURB AND GUTTER AND SHOULDER TREATMENT AT TBT TY 1 SPL (BD34)
14	TRAFFIC CONTROL AND PROTECTION FOR SIDEROADS, INTERSECTIONS AND DRIVEWAYS (TC10)
15	RAISED REFLECTIVE PAVEMENT MARKERS (SNOW PLOW RESISTANT) (TC11)
16	DISTRICT ONE TYPICAL PAVEMENT MARKINGS (TC13)
17	TEMPORARY INFORMATION SIGNING (TC22)

HIGHWAY STANDARDS

STD. NO.	TITLE
000001-06	STANDARD SYMBOLS, ABBREVIATIONS AND PATTERNS
280001-05	TEMPORARY EROSION CONTROL SYSTEMS
482006-03	HMA SHOULDER ADJACENT TO RIGID PAVEMENT
630001-09	STEEL PLATE BEAM GUARDRAIL
630301-05	SHOULDER WIDENING FOR TYPE 1 (SPECIAL) GUARDRAIL TERMINALS
631011-07	TRAFFIC BARRIER TERMINAL, TYPE 2
635006-03	REFLECTOR AND TERMINAL MARKER PLACEMENT
635011-02	REFLECTOR MARKER AND MOUNTING DETAILS
642001-01	SHOULDER RUMBLE STRIPS
701101-02	OFF-ROAD OPERATIONS, MULTILANE, 15' (4.5 m) TO 24' (600 mm) FROM PAVEMENT EDGE
701606-07	URBAN LANE CLOSURE, MULTILANE, 2W WITH MOUNTABLE MEDIAN
701901-01	TRAFFIC CONTROL DEVICES
720001-01	SIGN PANEL MOUNTING DETAILS
720006-06	SIGN PANEL ERECTION DETAILS
728001-01	TELESCOPING STEEL SIGN SUPPORT
780001-02	TYPICAL PAVEMENT MARKINGS
701426-04	

GENERAL NOTES

- BEFORE STARTING ANY EXCAVATION, THE CONTRACTOR SHALL CALL "J.U.L.I.E." AT 800-892-0123 FOR FIELD LOCATIONS OF BURIED ELECTRIC, TELEPHONE AND GAS FACILITIES. (48 HOUR NOTIFICATION IS REQUIRED).
- THE CONTRACTOR SHALL COORDINATE CONSTRUCTION ACTIVITIES WITH UTILITY COMPANIES.
- THE CONTRACTOR WILL NOT BE ALLOWED TO SET UP A YARD OR FIELD OFFICE ON STATE PROPERTY WITHOUT WRITTEN PERMISSION FROM THE DEPARTMENT.
- WHEN ARTIFICIAL LIGHTING IS USED IN NIGHT OPERATIONS THE CONTRACTOR SHALL EXERCISE THE UTMOST PRECAUTIONS IN PREVENTING ADVERSE VISIBILITY TO THE MOTORING PUBLIC AND ADJOINING RESIDENTIAL AREAS.
- WHEN MILLED PAVEMENT IS OPEN TO TRAFFIC THE MAXIMUM GRADE DIFFERENTIAL BETWEEN PASSES OF THE MILLING MACHINE SHALL NOT EXCEED 1 1/2 INCHES (40 MM) WHERE THE SPEED LIMIT IS 45 MPH (80 KM/H) OR LESS AND 1 INCH (25 MM) WHERE THE SPEED LIMIT IS GREATER THAN 45 MPH (80 KM/H). WITH WRITTEN APPROVAL FROM THE ENGINEER, A MAXIMUM GRADE DIFFERENTIAL OF 3 INCHES (75 MM) MAY BE ALLOWED IF THE EDGE OF THE MILLING IS SLOPED A MINIMUM 1:3 (V:H).
- THE CONTRACTOR SHALL CONTACT THE TRAFFIC CONTROL SUPERVISOR AT (847) 705-4470 A MINIMUM 72 HOURS IN ADVANCE OF BEGINNING WORK.
-  THE RESIDENT ENGINEER SHALL CONTACT WALTER CZARNY, AREA TRAFFIC FIELD ENGINEER AT (847) 715-8419 AT LEAST (2) WEEKS PRIOR TO PLACING PERMANENT PAVEMENT MARKINGS.
- THE CONTRACTOR SHALL BE REQUIRED TO PROVIDE ACCESS TO ABUTTING PROPERTY AT ALL TIMES DURING THE CONSTRUCTION OF THIS PROJECT.
- WHEN GUARDRAIL POSTS ARE PLACED BEHIND CONCRETE HEADWALLS, THE POSTS SHALL NOT BE PLACED TO BLOCK THE DRAINAGE OPENING.

SUMMARY OF QUANTITIES

90% FED.  
10% STATE  
URBAN

PAY ITEM NUMBER	DESCRIPTION	UNIT	TOTAL QUANTITY	0021 SAFETY
20200600	EXCAVATING AND GRADING EXISTING SHOULDER	UNIT	5	5
21101615	TOPSOIL FURNISH AND PLACE, 4"	SQ YD	217	217
25000210	SEEDING, CLASS 2A	ACRE	0.04	0.04
25000400	NITROGEN FERTILIZER NUTRIENT	POUND	4	4
25000500	PHOSPHORUS FERTILIZER NUTRIENT	POUND	4	4
25000600	POTASSIUM FERTILIZER NUTRIENT	POUND	4	4
25100630	EROSION CONTROL BLANKET	SQ YD	217	217
40600895	CONSTRUCTING TEST STRIP	EACH	1	1
48101620	AGGREGATE SHOULDERS, TYPE B 10"	SQ YD	464	464
48102100	AGGREGATE WEDGE SHOULDER, TYPE B	TON	94	94
48203029	HOT-MIX ASPHALT SHOULDERS, 8"	SQ YD	2,413	2,413
63000001	STEEL PLATE BEAM GUARDRAIL, TYPE A, 6 FOOT POSTS	FOOT	163	163
63100045	TRAFFIC BARRIER TERMINAL, TYPE 2	EACH	2	2
63100167	TRAFFIC BARRIER TERMINAL, TYPE 1 (SPECIAL) TANGENT	EACH	6	6
63200310	GUARDRAIL REMOVAL	FOOT	130	130
64200105	SHOULDER RUMBLE STRIPS	FOOT	5,050	5,050
67000400	ENGINEER'S FIELD OFFICE, TYPE A	CAL MO	6	6
67100100	MOBILIZATION	L SUM	1	1
70102625	TRAFFIC CONTROL AND PROTECTION, STANDARD 701606	L SUM	1	1
70300520	PAVEMENT MARKING TAPE, TYPE III 4"	FOOT	6,224	6,224
70301000	WORK ZONE PAVEMENT MARKING REMOVAL	SQ FT	2,075	2,075
* 72000100	SIGN PANEL - TYPE 1	SQ FT	105	105
* 72400310	REMOVE SIGN PANEL - TYPE 1	SQ FT	18	18
* 72400100	REMOVE SIGN PANEL ASSEMBLY - TYPE A	EACH	13	13
* 72800100	TELESCOPING STEEL SIGN SUPPORT	FOOT	230	230
* 78000200	THERMOPLASTIC PAVEMENT MARKING - LINE 4"	FOOT	12,200	12,200
78100100	RAISED REFLECTIVE PAVEMENT MARKER	EACH	155	155
78200420	GUARDRAIL MARKERS, TYPE B	EACH	5	5
78201000	TERMINAL MARKER-DIRECT APPLIED	EACH	6	6
78300100	PAVEMENT MARKING REMOVAL	SQ FT	3,745	3,745
78300200	RAISED REFLECTIVE PAVEMENT MARKER REMOVAL	EACH	155	155
X2020110	GRADING AND SHAPING SHOULDERS	UNIT	50	50
△ X2503100	MOWING	UNIT	20	20
Z0030850	TEMPORARY INFORMATION SIGNING	SQ FT	51	51
△ X0326898	CENTER LINE - RUMBLE STRIP - 16"	FOOT	3,594	3,594

\* 72400710 RELOCATE SIGN PANEL - TYPE 1 SQ FT 2 2  
 \* 70300240 THERMOPLASTIC PAVEMENT MARKING - LINE 6" FOOT 88 88  
 \* 70300260 THERMOPLASTIC PAVEMENT MARKING - LINE 12" FOOT 142 142

△ - NON-PARTICIPATING  
 \* - SPECIALTY ITEMS

Rev. 6-3-11

FILE NAME =	USER NAME = .USER.	DESIGNED - EF	REVISED -	<b>STATE OF ILLINOIS DEPARTMENT OF TRANSPORTATION</b>	<b>IL 19 - EAST OF DES PLAINES RIVER RD TO IL 171 SUMMARY OF QUANTITIES</b>	F.A.P. RTE.	SECTION	COUNTY	TOTAL SHEETS	SHEET NO.	
*FILEL*		DRAWN - EF	REVISED -			345	2010-118-1	COOK	17	3	
	PLOT SCALE = 50,0000' / IN.	CHECKED - RS	REVISED -			SCALE: NTS SHEET NO. 1 OF 1 SHEETS STA. TO STA.					
	PLOT DATE = 4/11/2011	DATE - 04-12-2011	REVISED -			ILLINOIS FED. AID PROJECT CONTRACT NO. 60M55					

SCHEDULE OF QUANTITIES - SIGNS

STATION	OFFSET		REMOVE SIGN PANEL - TYPE 1 (SQ.FT.)	SIGN PANEL ASSEMBLY REMOVAL (EACH)	Sign	SIGN ID #	SIZE (inches)	SIGN PANEL TYPE 1 (SQ.FT.)	RELOCATE SIGN PANEL - TYPE 1	TELESCOPING STEEL SIGN SUPPORT (FT.)
105+42	38.9	LT	3	0	Black and Yellow Striped Object Marker	OM-3L	12x36	3	0	0
105+80	27.7	RT	0	1	Black and Yellow Striped Object Marker	OM-3R	12x36	3	0	16.5
104+25	38.8	RT	0	1	Equestrain	W11-7	36x36	9	0	18.5
103+15	39.5	RT	0	1	SPEED LIMIT 40	R2-1	30x36	7.5	0	15
108+45	26.1	RT	0	1	Black and Yellow Striped Object Marker	OM-3L	12x36	3	0	15
108+63	27.3	RT	0	1	Equestrain	W11-7	36x36	9	0	18.5
			0	0	Downward Diagonal Arrow	W16-7P	21x15	2.2		
108+09	36.2	LT	0	1	Black and Yellow Striped Object Marker	OM-3R	12x36	3	0	15
108+71	32.6	LT	0	1	Equestrain	W11-7	36x36	9	0	18.5
			0	0	Downward Diagonal Arrow	W16-7P	21x15	2.2		
109+01	32.6	LT	0	0	No Parking Along Highway	R8	12x18	0.0	1.5	13.5
110+93	32.9	RT	0	1	SPEED LIMIT 45	R2-1	30x36	7.5	0	16.5
110+91	35.1	LT	0	1	SPEED LIMIT 40	R2-1	30x36	7.5	0	16.5
114+81	35.6	LT	0	1	Equestrain	W11-7	36x36	9	0	18.75
117+99	30.3	RT	0	1	Black and Yellow Striped Object Marker	OM-3L	12x36	0	0	0
127+92	29.7	LT	0	1	SPEED LIMIT 45	R2-1	30x36	7.5	0	16.5
131+23	34.7	RT	0	1	SPEED LIMIT 45	R2-1	30x36	7.5	0	16.5
151+44	35.1	RT	7.5	0	SPEED LIMIT 35	R2-1	30x36	7.5	0	0
151+44	35.0	LT	7.5	0	SPEED LIMIT 45	R2-1	30x36	7.5	0	15
TOTALS			18	13				105	2	230

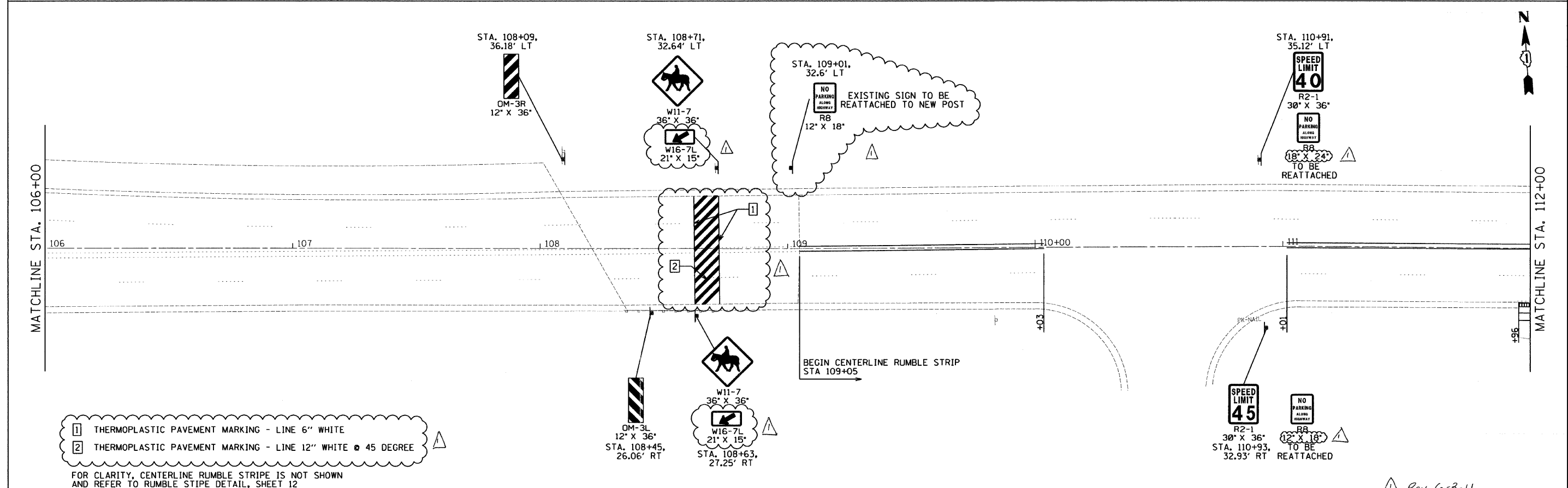
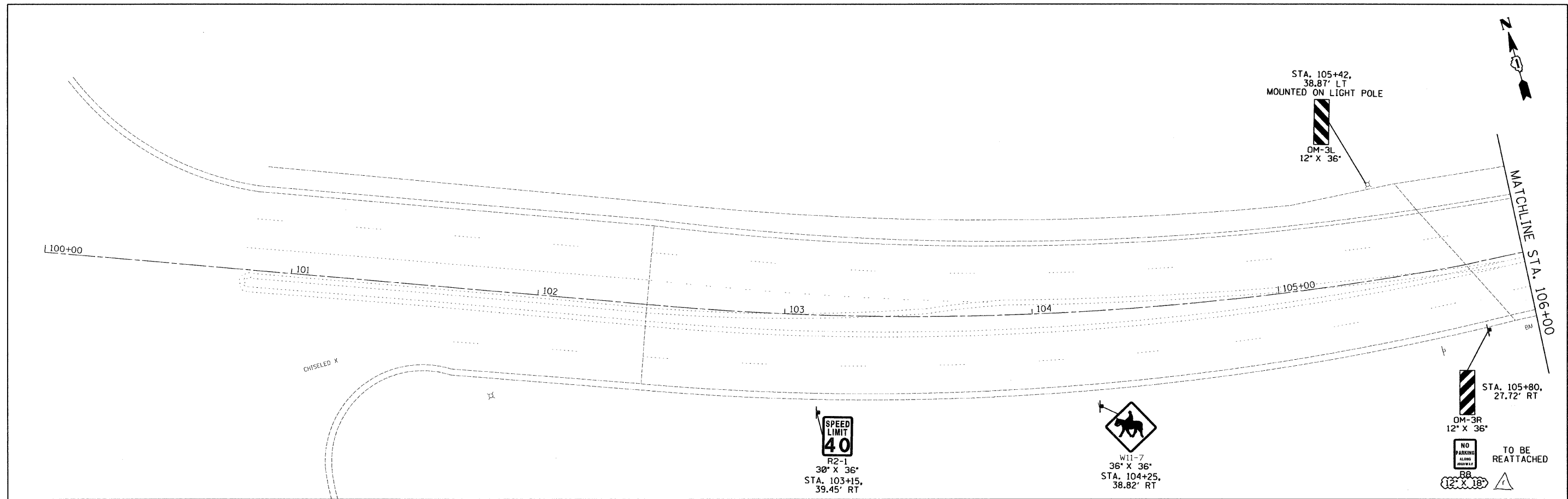
SCHEDULE OF QUANTITIES - ROADWAY

From	To	Side	Measured Length	Total SY	X2020110 GRADING AND SHAPING SHOULDERS	48102100 AGGREGATE WEDGE SHOULDER, TYPE B	48203029 HOT-MIX ASPHALT SHOULDERS, 8"	64200105 SHOULDER RUMBLE STRIP	X0325866 CENTERLINE RUMBLE STRIPS	78000200 THERMOPLASTIC PAVEMENT MARKING - LINE 4" YELLOW C/L	78000200 THERMOPLASTIC PAVEMENT MARKING - LINE 4" WHITE EDGE	78300100 PAVEMENT MARKING REMOVAL	78100100 RAISED REFLECTIVE PAVEMENT MARKER
106+00	112+00	LT	0	0.0	0	0	0	0	295	396	0	132	10
		RT	4	1.9	0	0	2	4			4	1	
112+00	118+00	LT	211	103.5	2	4	104	211	600	1,054	211	422	26
		RT	600	288.7	6	11	289	600			600	200	
118+00	124+00	LT	600	288.7	6	11	289	600	600	1,200	600	600	30
		RT	600	288.7	6	11	289	600			600	200	
124+00	130+00	LT	528	254.0	5	10	254	528	600	1,044	528	524	26
		RT	586	281.9	6	11	282	586			586	195	
130+00	136+00	LT	600	288.7	6	11	289	600	600	1,000	600	533	25
		RT	262	126.1	3	5	126	262			262	87	
136+00	142+00	LT	454	218.4	5	8	218	454	600	1,044	454	499	26
		RT	535	257.4	5	10	257	535			535	178	
142+00	148+00	LT	0	0.0	0	0	0	0	299	486	0	162	12
		RT	31	14.9	0	1	15	31			31	10	
148+00	152+08	LT	0	0.0	0	0	0	0		0	0	0	0
		RT	0	0.0	0	0	0	0			0	0	
TOTAL			5,011	2,413	50	94	2,413	5,011	3,594	6,224	5,011	3,745	155

5/18/11

FILE NAME =	USER NAME = .USER.	DESIGNED - EF	REVISED -	<b>STATE OF ILLINOIS DEPARTMENT OF TRANSPORTATION</b>	<b>IL 19 - EAST OF DES PLAINES RIVER RD TO IL 171 SCHEDULE OF QUANTITIES</b>	F.A.P. RTE.	SECTION	COUNTY	TOTAL SHEETS	SHEET NO.	
#FILEL\$	PLOT SCALE = 50,0000' / IN.	DRAWN - EF	REVISED -			345	2010-118-I	COOK	17	4	
	PLOT DATE = 5/11/2011	CHECKED - RS	REVISED -			CONTRACT NO. 60M55					
		DATE - 04-12-2011	REVISED -			SCALE: NTS	SHEET NO. 1 OF 1 SHEETS	STA.	TO STA.	ILLINOIS FED. AID PROJECT	

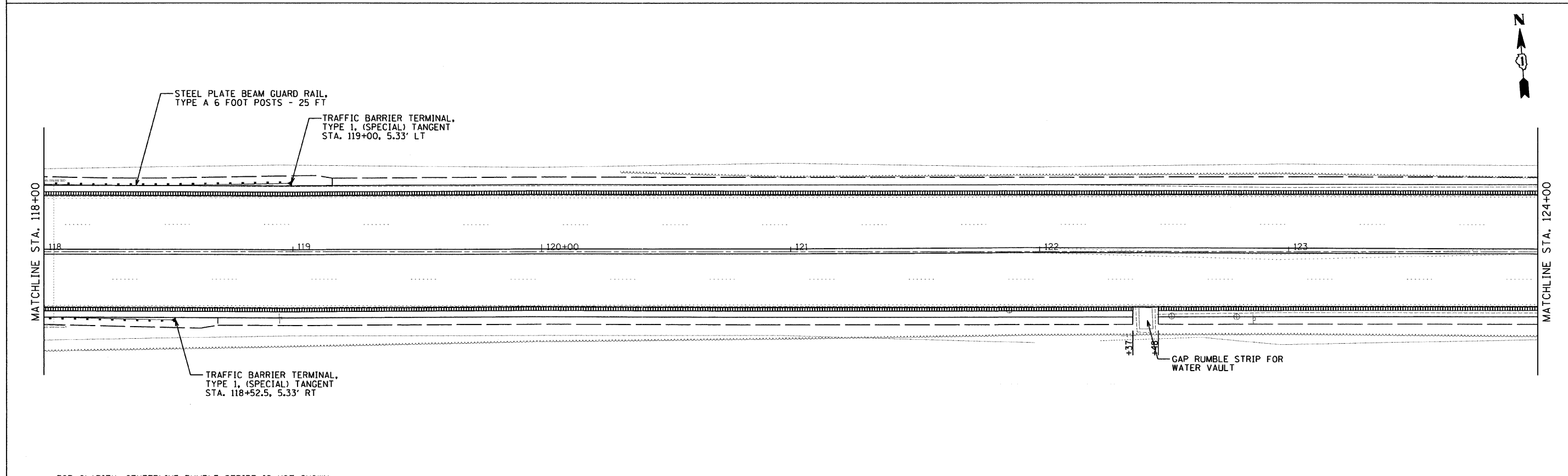
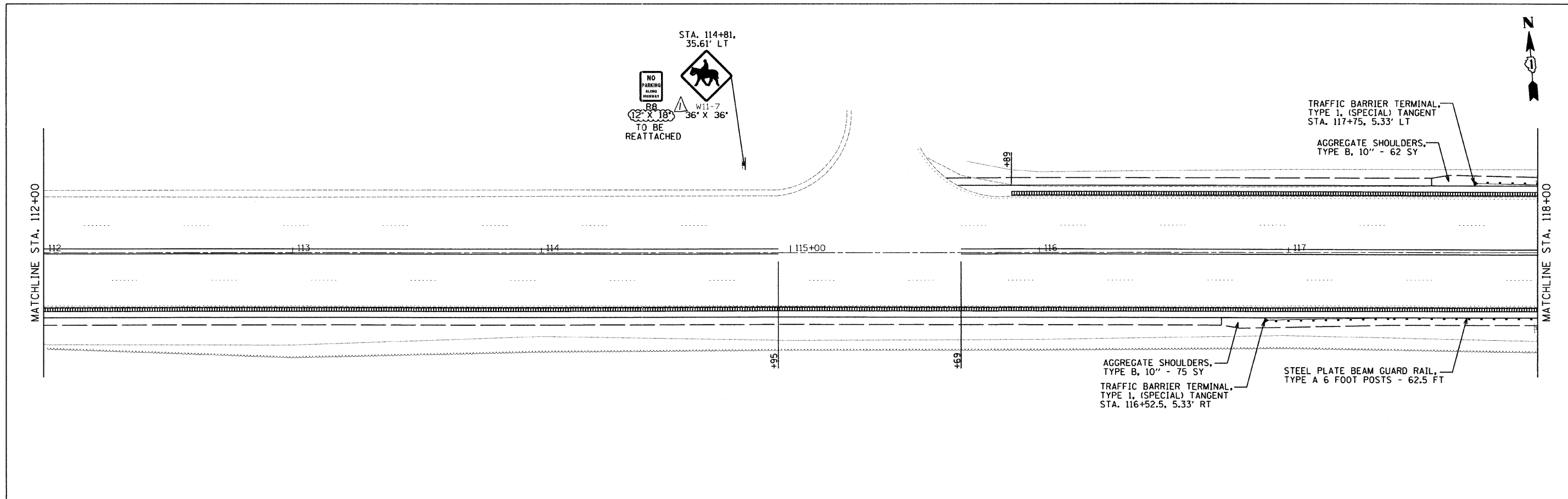
Rev. 6-3-11



FILE NAME =	USER NAME = .USER.	DESIGNED - EF	REVISED -	<b>STATE OF ILLINOIS DEPARTMENT OF TRANSPORTATION</b>	<b>IL 19 - EAST OF DES PLAINES RIVER RD TO IL 171 ROADWAY PLANS</b>	F.A.P. RTE.	SECTION	COUNTY	TOTAL SHEETS	SHEET NO.	
#FILE#	PLOT SCALE = 20.0000' / IN.	DRAWN - EF	REVISED -			345	2010-118-1	COOK	17	6	
5/18/11	PLOT DATE = 5/11/2011	CHECKED - RS	REVISED -			CONTRACT NO. 60M55					
		DATE - 04-12-2011	REVISED -			ILLINOIS FED. AID PROJECT					

Rev. 6-3-11

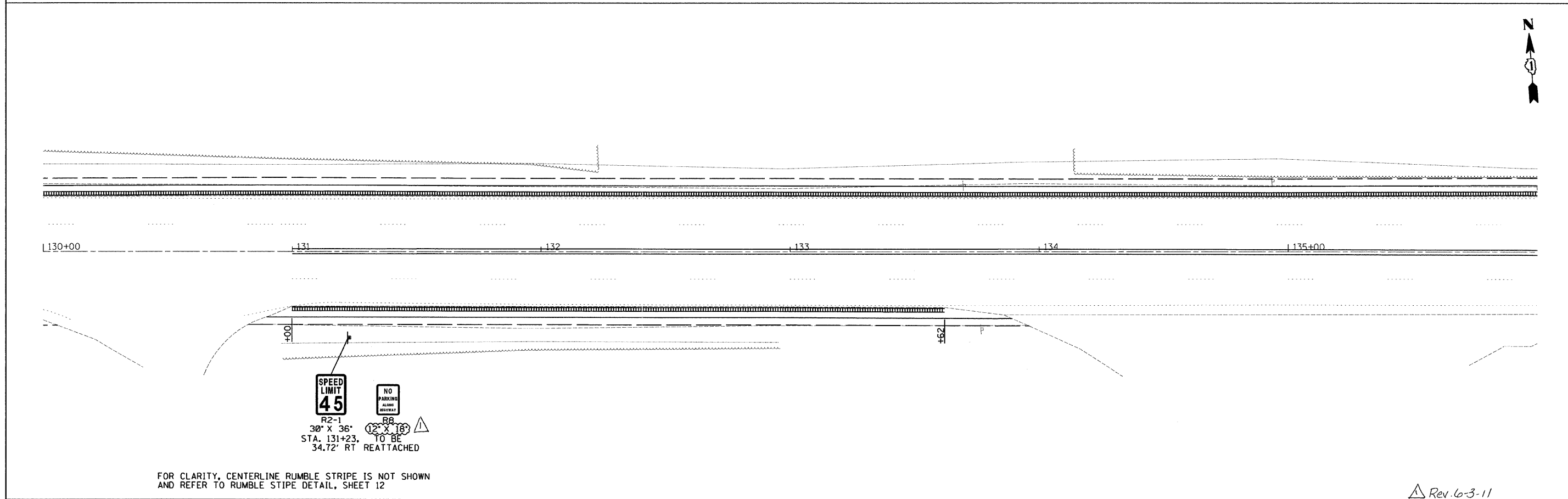
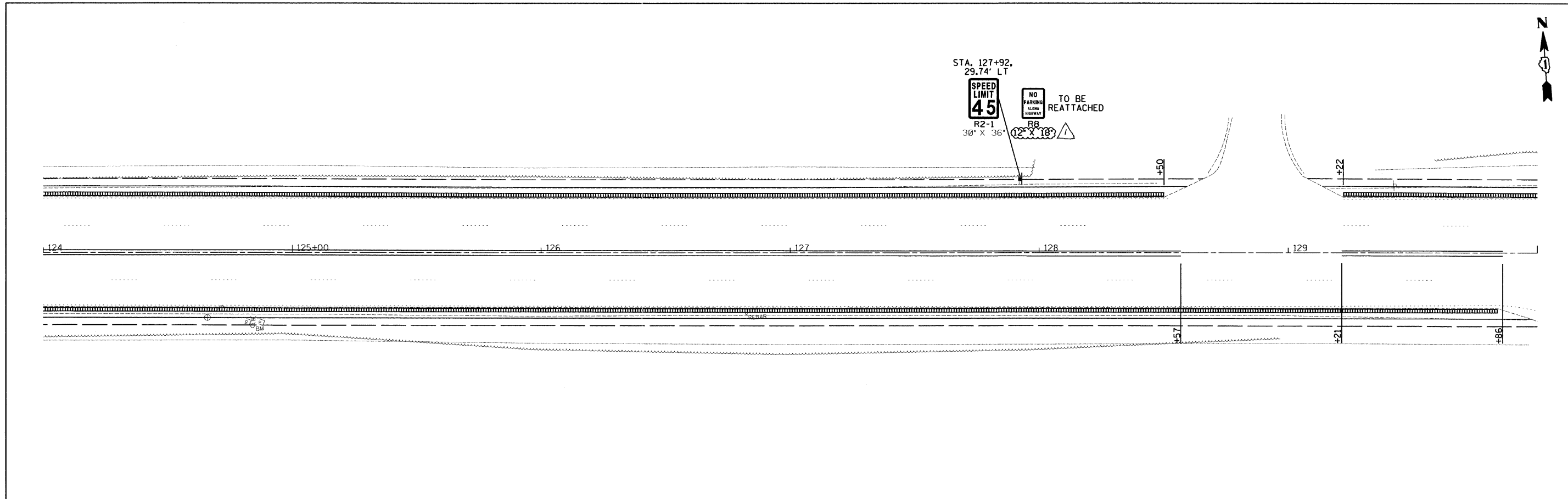
SCALE: 20 SHEET NO. 1 OF 5 SHEETS STA. 100+00 TO STA. 112+00



FOR CLARITY, CENTERLINE RUMBLE STRIPE IS NOT SHOWN AND REFER TO RUMBLE STRIPE DETAIL, SHEET 12

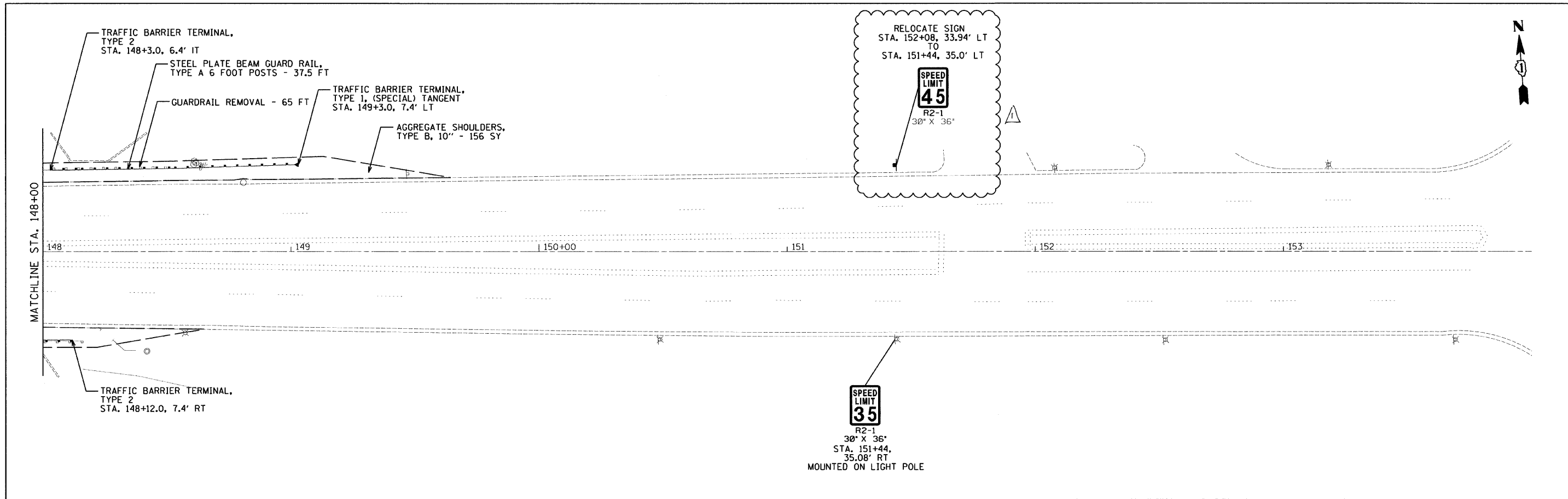
FILE NAME = #FILEL* 5/18/11	USER NAME = .USER. PLOT SCALE = 20.0000' / IN. PLOT DATE = 5/11/2011	DESIGNED - EF DRAWN - EF CHECKED - RS DATE - 04-12-2011	REVISED - REVISED - REVISED - REVISED -	<b>STATE OF ILLINOIS DEPARTMENT OF TRANSPORTATION</b>		<b>IL 19 - EAST OF DES PLAINES RIVER RD TO IL 171 ROADWAY PLANS</b>		F.A.P. RTE. 345	SECTION 2010-118-1	COUNTY COOK	TOTAL SHEETS 17	SHEET NO. 7
				SCALE: 20	SHEET NO. 2 OF 5 SHEETS	STA. 112+00	TO STA. 124+00	ILLINOIS FED. AID PROJECT				

Rev. 6-3-11



FOR CLARITY, CENTERLINE RUMBLE STRIPE IS NOT SHOWN  
AND REFER TO RUMBLE STRIPE DETAIL, SHEET 12

FILE NAME = #FILEL# 5/18/11	USER NAME = .USER.	DESIGNED - EF	REVISED -	<b>STATE OF ILLINOIS DEPARTMENT OF TRANSPORTATION</b>	<b>IL 19 - EAST OF DES PLAINES RIVER RD TO IL 171 ROADWAY PLANS</b>	F.A.P. RTE. 345	SECTION 2010-118-1	COUNTY COOK	TOTAL SHEETS 17	SHEET NO. 8		
PLOT SCALE = 20.0000' / IN.						SCALE: 20	SHEET NO. 3 OF 5 SHEETS	STA. 124+00	TO STA. 136+00	CONTRACT NO. 60M55		
PLOT DATE = 5/11/2011						ILLINOIS FED. AID PROJECT						
DATE - 04-12-2011						Rev. 6-3-11						



Rev. 6-3-11

FILE NAME =	USER NAME = USER.	DESIGNED - EF	REVISED -	<b>STATE OF ILLINOIS DEPARTMENT OF TRANSPORTATION</b>	<b>IL 19 - EAST OF DES PLAINES RIVER RD TO IL 171 ROADWAY PLANS</b>	F.A.P. RTE.	SECTION	COUNTY	TOTAL SHEETS	SHEET NO.	
#FILEL#	PLOT SCALE = 20,000' / IN.	DRAWN - EF	REVISED -			345	2010-118-1	COOK	17	10	
5/18/11	PLOT DATE = 5/11/2011	CHECKED - RS	REVISED -			CONTRACT NO. 60M55					
		DATE - 04-12-2011	REVISED -			ILLINOIS FED. AID PROJECT					
					SCALE: 20	SHEET NO. 5 OF 5 SHEETS		STA. 148+00 TO STA. 154+00			