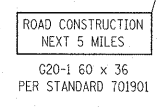
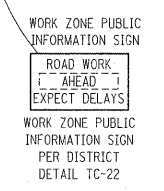
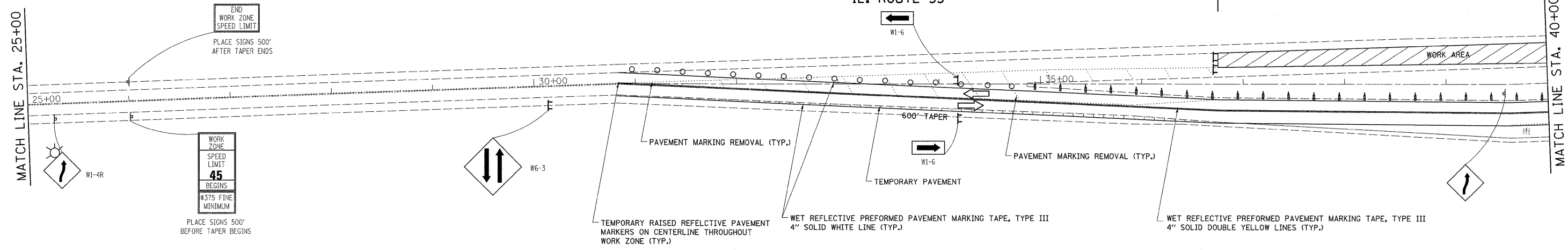


- LEGEND**
- WORK AREA
  - VERTICAL PANEL (BACK TO BACK)
  - TYPE III BARRICADE WITH FLASHING LIGHT
  - TYPE II BARRICADE OR DRUM WITH MONO-DIRECTIONAL STEADY BURN LIGHT, 25' C-C
  - SIGN
  - DIRECTION OF TRAFFIC FLOW
  - MONODIRECTIONAL FLASHING BEACON
  - ARROW BOARD
  - DIRECTION INDICATOR BARRICADE WITH STEADY BURN MONODIRECTIONAL LIGHT
  - TEMPORARY PAVEMENT



**NOTES**  
 THE ROAD CONSTRUCTION AHEAD SIGN SHALL BE LOCATED ONE MILE IN ADVANCE OF THE PROJECT LIMITS PER STANDARD 701431.



FILE NAME =	USER NAME = qureshiya	DESIGNED -	REVISED -	<b>STATE OF ILLINOIS DEPARTMENT OF TRANSPORTATION</b>	<b>SUGGESTED TRAFFIC CONTROL STAGE TWO</b>			F.A.P. RTE.	SECTION	COUNTY	TOTAL SHEETS	SHEET NO.
cs:\pe_work\pwidot\qureshiya\d0255746\012211-sh1-pln.dgn	PLOT SCALE = 50.0000' / IN.	DRAWN -	REVISED -					846	4-RS-4	WILL	25	16
	PLOT DATE = 5/25/2011	CHECKED -	REVISED -		CONTRACT NO. 60N05							
		DATE -	REVISED -		ILLINOIS FED. AID PROJECT							