

STATE OF ILLINOIS
 DEPARTMENT OF TRANSPORTATION
 DIVISION OF HIGHWAYS

**PROPOSED
 HIGHWAY PLANS**

FAU ROUTE 2722: 17TH AVENUE
 MADISON AVENUE TO 22ND STREET
 SECTION: 2010-160-RS
 PROJECT: M-2722(001)
 RESURFACING
 COOK COUNTY
 C-91-344-11

F.A. RTE.	SECTION	COUNTY	TOTAL SHEETS	SHEET NO.
2722	2010-160-RS	COOK	25	1
ILLINOIS		CONTRACT NO. 60N74		

*25 + 2 = 27

D-91-344-11

FOR INDEX OF SHEETS, SEE SHEET NO. 2

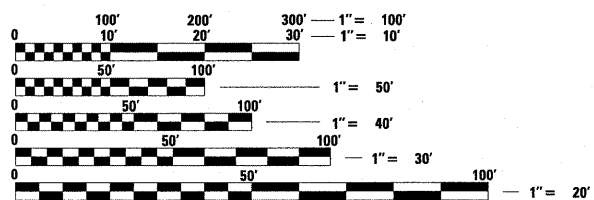
PROJECT IS LOCATED IN
 THE VILLAGES OF
 BROADVIEW & MAYWOOD



LOCATION OF SECTION INDICATED THUS: -



TRAFFIC DATA:
 SPEED LIMIT = 30 - 35 MPH
 2010 ADT = 10,100



FULL SIZE PLANS HAVE BEEN PREPARED USING STANDARD ENGINEERING SCALES. REDUCED SIZED PLANS WILL NOT CONFORM TO STANDARD SCALES. IN MAKING MEASUREMENTS ON REDUCED PLANS, THE ABOVE SCALES MAY BE USED.

J.U.L.I.E.
 JOINT UTILITY LOCATION INFORMATION FOR EXCAVATION
 1-800-892-0123
 OR 811

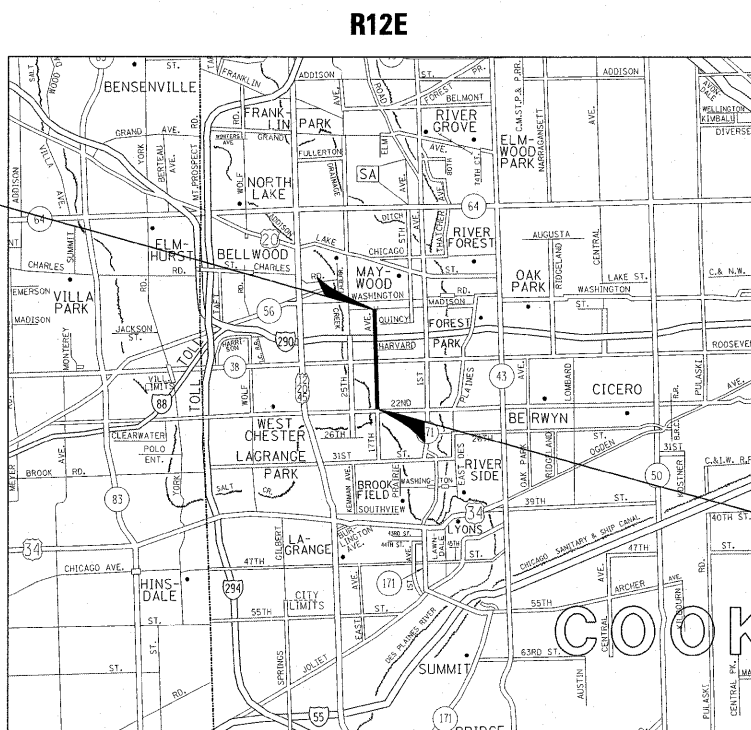
PROJECT ENGINEER: DAN WILGREEN (847) 705-4240
 PROJECT MANAGER: KEN ENG

CONTRACT NO. 60N74

PROJECT ENDS:
 STATION 116 + 15

OMISSIONS:
 36 + 26 TO 36 + 51
 61 + 66 TO 63 + 60
 87 + 06 TO 89 + 65

PROJECT BEGINS:
 STATION 10 + 47



GROSS LENGTH = 10568 FEET = 2.00 MILES
 NET LENGTH = 10139 FEET = 1.92 MILES

STATE OF ILLINOIS
 DEPARTMENT OF TRANSPORTATION
 DIVISION OF HIGHWAYS

SUBMITTED MARCH 30, 2011

Diana M. O'Keefe
 DEPUTY DIRECTOR OF HIGHWAYS, REGION ENGINEER

May 13 2011
Scott E. Stitt, P.E.
 Acting ENGINEER OF DESIGN AND ENVIRONMENT

May 13 2011
Christine M. Reed
 DIRECTOR OF HIGHWAYS, CHIEF ENGINEER

PRINTED BY THE AUTHORITY
 OF THE STATE OF ILLINOIS