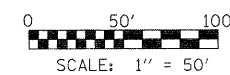
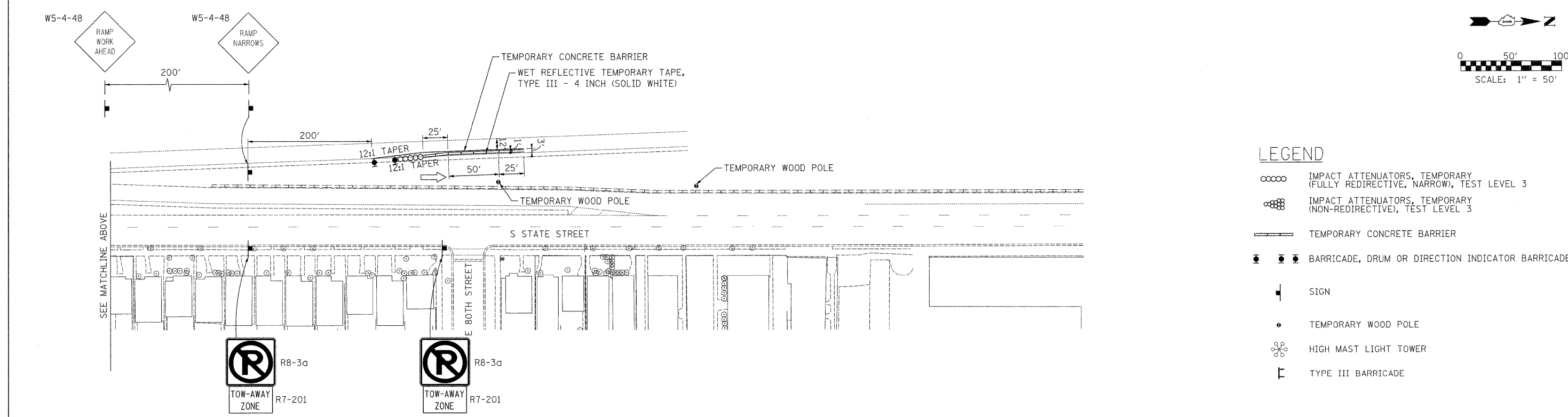
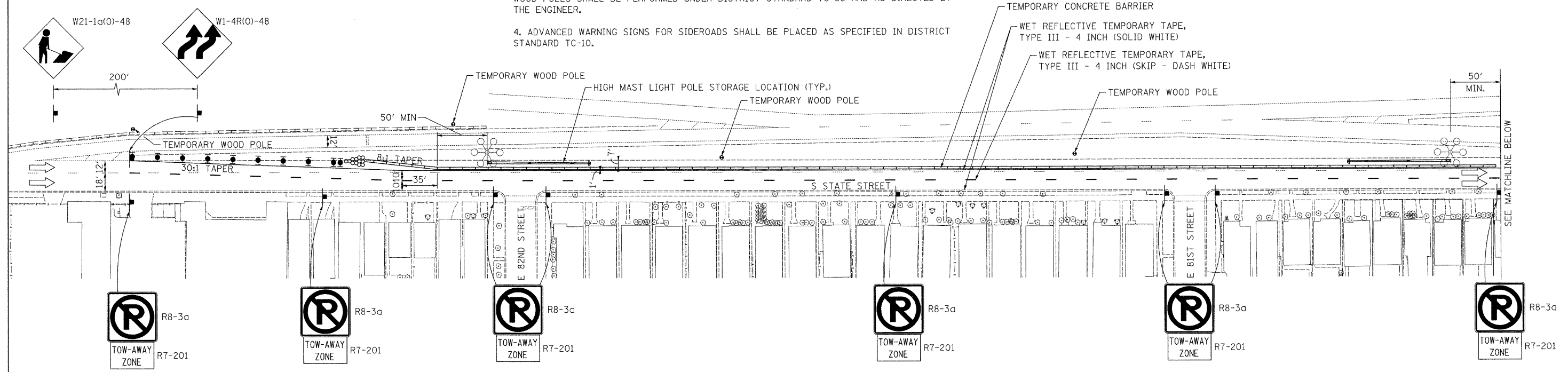
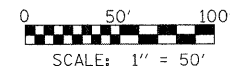


NOTES:

1. ALL EXISTING PAVEMENT MARKINGS WITHIN THE STAGING LIMITS SHALL BE REMOVED PRIOR TO CONSTRUCTION, AND NEW PAVEMENT MARKINGS PLACED AT COMPLETION OF CONSTRUCTION. THIS WORK SHALL BE PERFORMED UNDER HIGHWAY STANDARD 701427.
2. ANY MODIFICATIONS TO THE STAGING DETAILS SHOWN ON THIS SHEET SHALL BE APPROVED BY THE ENGINEER PRIOR TO IMPLEMENTATION.
3. RAMP CLOSURES AS NEEDED FOR THE INSTALLATION AND REMOVAL OF THE TEMPORARY WOOD POLES SHALL BE PERFORMED UNDER DISTRICT STANDARD TC-08 AND AS DIRECTED BY THE ENGINEER.
4. ADVANCED WARNING SIGNS FOR SIDEROADS SHALL BE PLACED AS SPECIFIED IN DISTRICT STANDARD TC-10.



LEGEND

- IMPACT ATTENUATORS, TEMPORARY (FULLY REDIRECTIVE, NARROW), TEST LEVEL 3
- IMPACT ATTENUATORS, TEMPORARY (NON-REDIRECTIVE), TEST LEVEL 3
- TEMPORARY CONCRETE BARRIER
- BARRICADE, DRUM OR DIRECTION INDICATOR BARRICADE
- SIGN
- TEMPORARY WOOD POLE
- HIGH MAST LIGHT TOWER
- TYPE III BARRICADE