

PLAN - LIGHT TOWERS 6POP2 & 6POP4

SECTION C-C

\*The Contractor shall saw cut at 8'-0" from top of existing foundation or level with south knee wall on Expressway side of the wall, whichever is lower in elevation.

**Notes:**  
 Contractor shall take special care to ensure that backfill material behind the wall remains in place, or if any is lost during construction the backfill is properly replaced as necessary. Contractor has the option of using CLSM as an alternative backfill material, see Section 593 of the Standard Specifications. Cost included with Concrete Removal.  
 Any damage to the adjacent retaining wall or knee wall shall be repaired or replaced in kind at no additional cost to the Department.  
 Conduit is not shown for clarity.  
 Cost of anchor rod assembly and wires for grounding are included with "Concrete Structures".  
 Welding to anchor rod assembly is not allowed.  
 All existing vertical reinforcement bars shall be cleaned and incorporated into the new construction. Epoxy coating shall be reapplied if damaged during removal. Cost included with Concrete Removal.  
 Space reinforcement bars to miss anchor rods.  
 Contractor shall minimize median removal required for excavation and removal work. Limits to be approved by the Engineer.

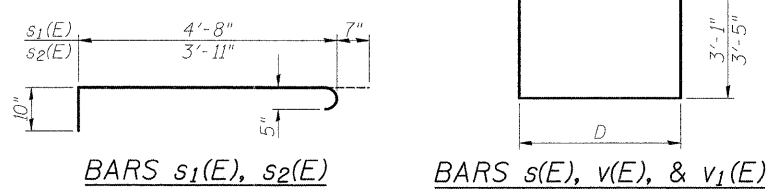
6POP2  
BILL OF MATERIAL

Bar	No.	Size	Length	Shape
s(E)	18	#5	10'-10"	[Symbol]
s <sub>1</sub> (E)	18	#5	6'-1"	[Symbol]
s <sub>2</sub> (E)	18	#5	5'-4"	[Symbol]
v(E)	3	#7	11'-5"	[Symbol]
v <sub>1</sub> (E)	6	#7	10'-9"	[Symbol]
Reinforcement Bars, Epoxy Coated			Pound	620
Concrete Structures			Cu. Yd.	6.4
Concrete Removal			Cu. Yd.	6.4
** Concrete Median Surface, 5" (Modified)			Sq. Ft.	18
Median Removal			Sq. Ft.	18
*** Subbase Granular Material, Type B			Ton	1.0

6POP4  
BILL OF MATERIAL

Bar	No.	Size	Length	Shape
s(E)	18	#5	10'-10"	[Symbol]
s <sub>1</sub> (E)	18	#5	6'-1"	[Symbol]
s <sub>2</sub> (E)	18	#5	5'-4"	[Symbol]
v(E)	3	#7	11'-5"	[Symbol]
v <sub>1</sub> (E)	6	#7	10'-9"	[Symbol]
Reinforcement Bars, Epoxy Coated			Pound	620
Concrete Structures			Cu. Yd.	6.4
Concrete Removal			Cu. Yd.	6.4
** Concrete Median Surface, 5" (Modified)			Sq. Ft.	18
Median Removal			Sq. Ft.	18
*** Subbase Granular Material, Type B			Ton	1.0

\*\*See Special Provisions  
 \*\*\*Contractor has the option of using CLSM as an alternative material, see Section 593 of the Standard Specifications.

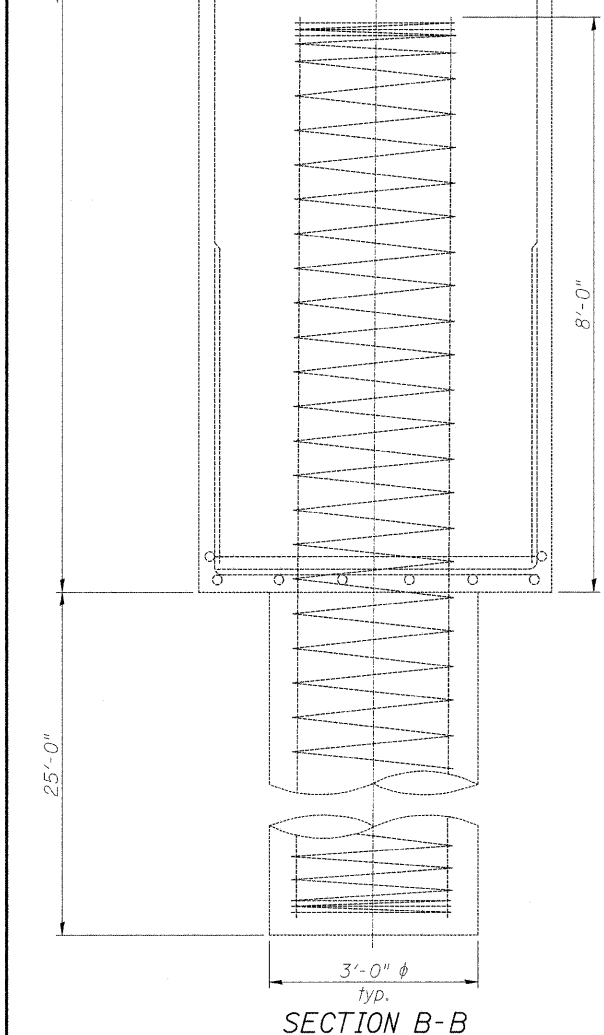


MARK TABLE

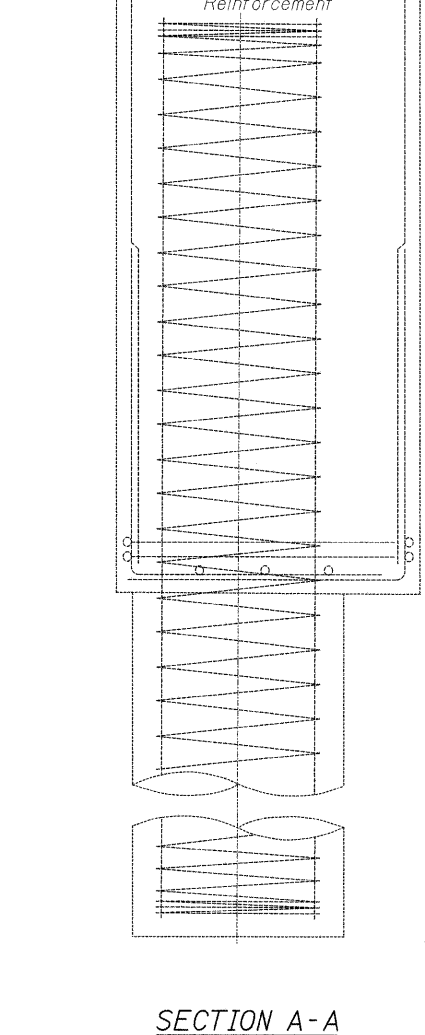
Bar	D
s(E)	4'-8"
v(E)	4'-7"
v <sub>1</sub> (E)	3'-11"

MIN. BAR LAPS

#5 = 2'-0"  
 #7 = 3'-2"



SECTION B-B



SECTION A-A