

**ROUTE MARKERS**

FOR U.S. ROUTES  
M1-40-2424

FOR ILLINOIS ROUTES  
M1-50-2424

R.R. UNMARKED ROUTES  
SPECIAL 24" x 18" VARIABLE  
4" BLACK LETTERS ON WHITE  
REFLECTIVE BACKGROUND

**ARROWS SIGNS**

M5-1L-2115

M5-1R-2115

M6-1-2115

M6-1-2115

M6-3-2115

**CARDINAL DIRECTION & DETOUR SIGNS**

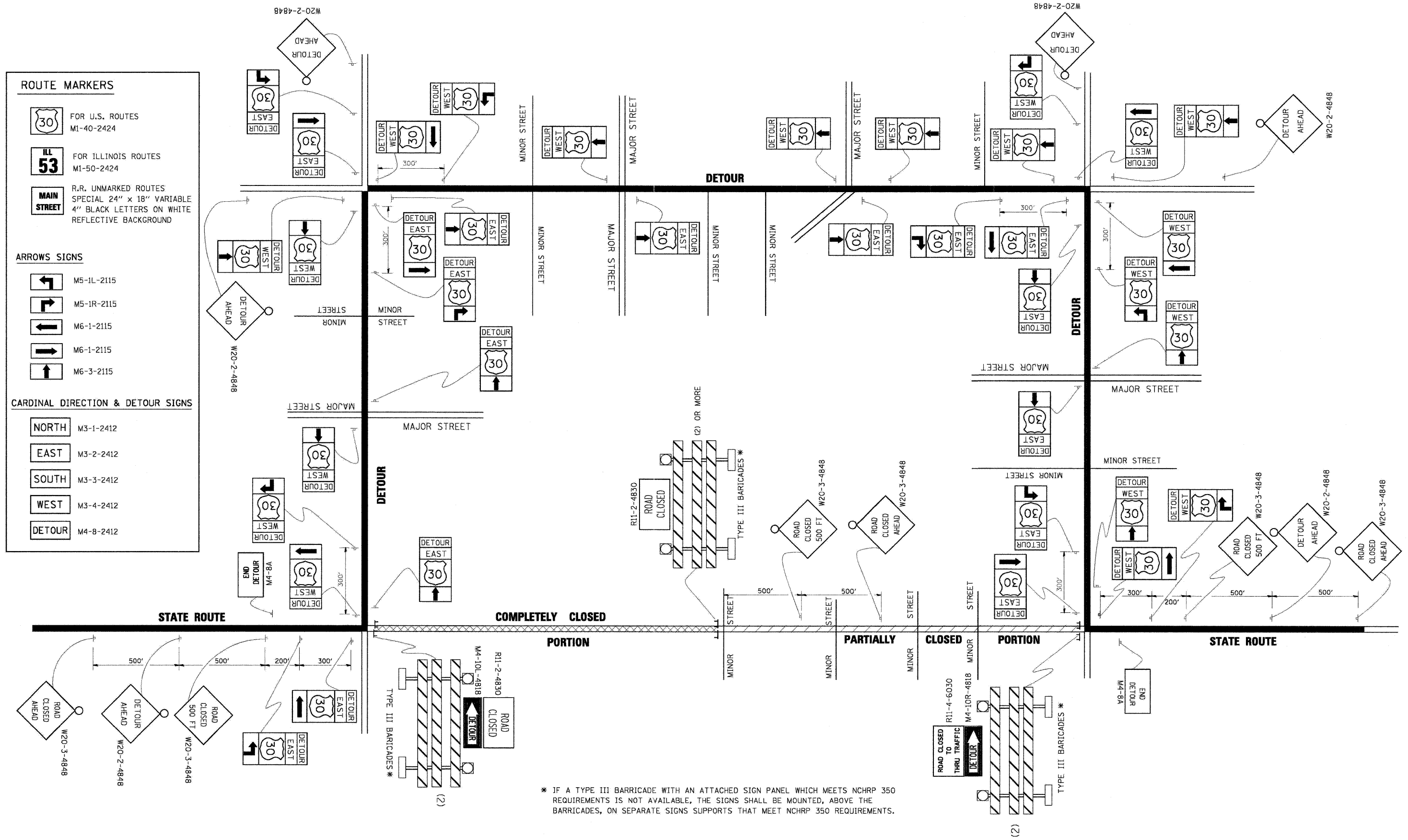
NORTH M3-1-2412

EAST M3-2-2412

SOUTH M3-3-2412

WEST M3-4-2412

DETOUR M4-8-2412



\* IF A TYPE III BARRICADE WITH AN ATTACHED SIGN PANEL WHICH MEETS NCHRP 350 REQUIREMENTS IS NOT AVAILABLE, THE SIGNS SHALL BE MOUNTED, ABOVE THE BARRICADES, ON SEPARATE SIGNS SUPPORTS THAT MEET NCHRP 350 REQUIREMENTS.

**DETOUR SIGNING FOR CLOSING STATE HIGHWAYS**

**LIN ENGINEERING, LTD.**  
Consulting Engineers  
Chatham, Illinois

|                      |                |           |
|----------------------|----------------|-----------|
| USER NAME = #USER#   | DESIGNED - SEW | REVISED - |
| PLOT SCALE = #SCALE# | DRAWN - SEW    | REVISED - |
| PLOT DATE = #DATE#   | CHECKED - FML  | REVISED - |
|                      | DATE - 04/2011 | REVISED - |

**STATE OF ILLINOIS  
DEPARTMENT OF TRANSPORTATION**

**DISTRICT STANDARDS**  
**FAI 9094 HIGH MAST LIGHT TOWER FOUNDATION REPAIRS**  
SCALE: N/A SHEET NO. 4 OF 7 SHEETS STA. TO STA.

|                           |                    |             |                    |               |
|---------------------------|--------------------|-------------|--------------------|---------------|
| F.A.I. RTE. 90/94         | SECTION 2011-021-L | COUNTY COOK | TOTAL SHEETS 19    | SHEET NO. 19B |
| TC-21                     |                    |             | CONTRACT NO. 60P16 |               |
| ILLINOIS FED. AID PROJECT |                    |             |                    |               |