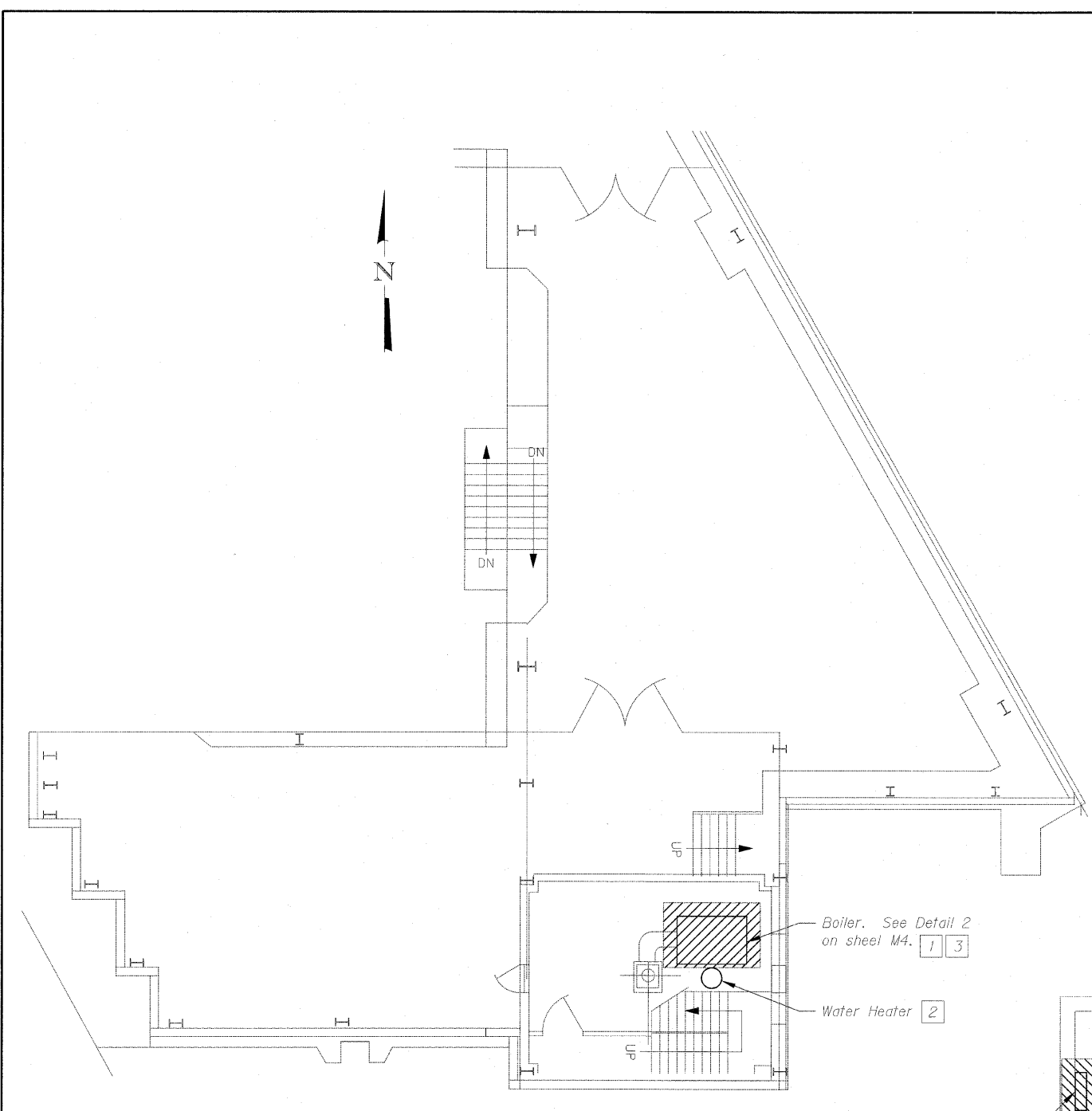


Sheet Notes:

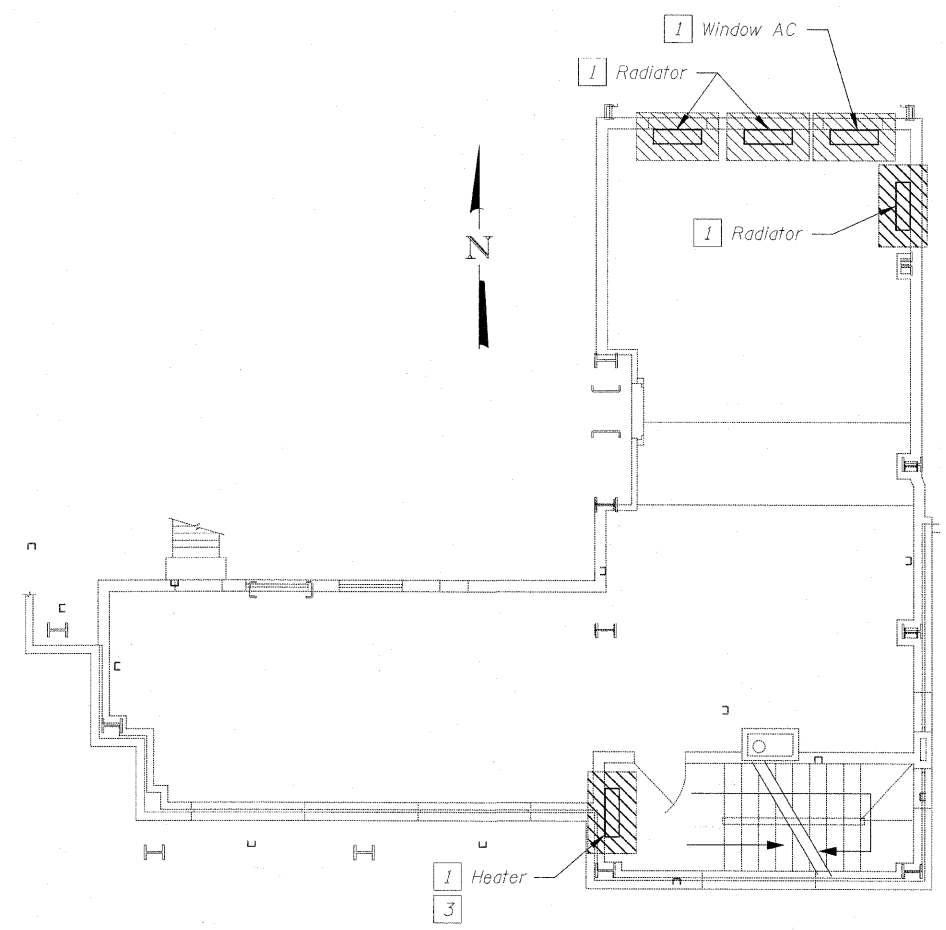
1. See sheet 2 for general demolition notes.
2. Cost of demolition, removal, and disposal of all items indicated is included in the cost of HVAC Demolition (Mechanical and Electrical).

Sheet Key Notes:

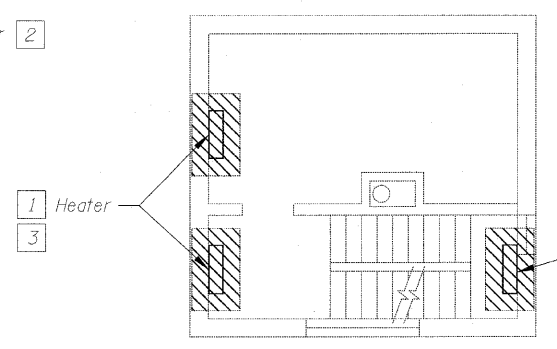
- 1 Remove equipment with related controls. Remove all related exposed piping to wall. Abandon piping in wall.
- 2 Existing to remain.
- 3 Remove conduit back to nearest j-box. remove wire back to source.
- 4 Frame openings with 3 5/8" metal studs at 16" on center where existing unit heaters are removed. Apply surface finish and texture to match existing finish adjacent to unit heaters (paint to match). Provide 4" vinyl base (black in color) in entire space.



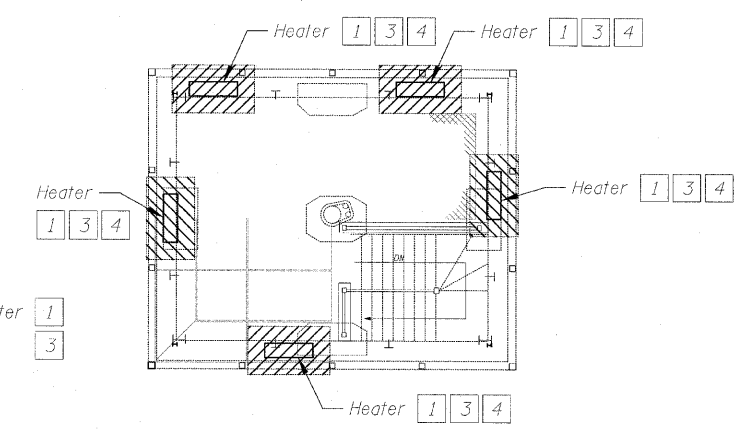
Electrical Control Room
East Control House
1st Floor Demolition



Electrical Control Room
East Control House
2nd Floor Demolition



Mechanical Room
East Control House
3rd Floor Demolition



Operator's Room
East Control House
4th Floor Demolition

T:\16845A-CongressParkway\Bridges\Drawings\0162445-60P18-FSR-063MED2.dgn
3/25/2011 6:52:51 PM

PB Americas, Inc.
230 WEST MONROE STREET,
SUITE 300
CHICAGO, IL. 60606
3121782-8150

USER NAME	kienstra
DESIGNED	S. KALYONCU
CHECKED	K. TELLA
DRAWN	E. KIENSTRA
CHECKED	K. TELLA
PLOT SCALE	
PLOT DATE	3/25/2011

REVISIONS	
REVISIONS	
REVISIONS	
REVISIONS	

STATE OF ILLINOIS
DEPARTMENT OF TRANSPORTATION

EAST CONTROL HOUSE
DEMOLITION FLOOR PLANS
FOR STRUCTURE NO. 016-2445
SHEET NO. MED2 OF MED2 SHEETS

F.A.P. RTE.	SECTION	COUNTY	TOTAL SHEETS	SHEET NO.
389	2424.2B-1-2	COOK	14	6
FED. ROAD DIST. NO. 7 (ILLINOIS) FED. AID PROJECT			CONTRACT NO. 60P18	