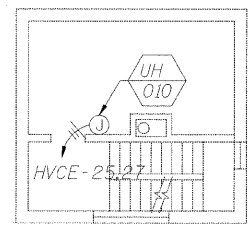
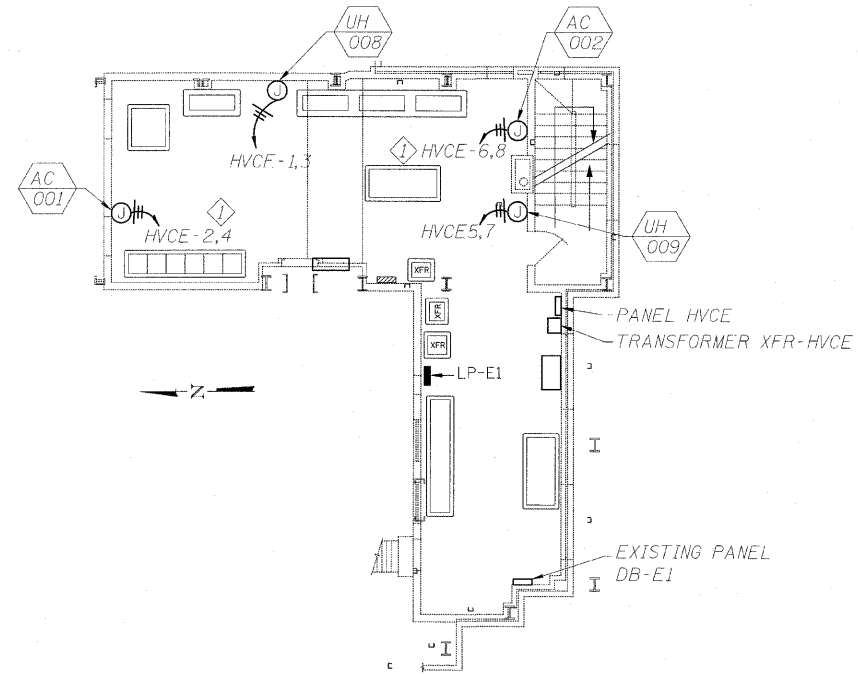


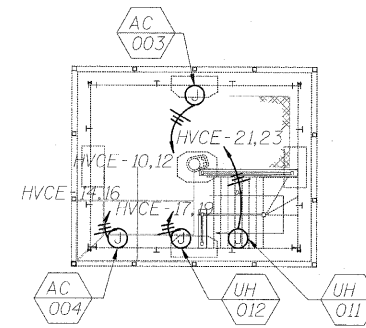
Electrical Control Room
East Control House
1st Floor



Mechanical Room
East Control House
3rd Floor



Electrical Control Room
East Control House
2nd Floor



Operator's Room
East Control House
4th Floor

Sheet Notes:

1. Mechanical equipment locations to be coordinated with electrical equipment locations.
2. See sheet 14 for Panel Board Schedule.
3. Cost of panel HVCE is included in the cost of Panel Boards and Panel Mounted Circuit Breakers.
4. Cost of transformer XFR-HVCE is included in the cost of transformers.

Sheet Key Notes:

- ⊠ AC units require power from their respective CU units located on the first floor. Provide 2 #12GND in 3/4" C to CU unit.

T:\16843A-CongressParkwayBridge\Drawings\0162445-60P18-FSR-063E2.dgn
3/25/2011 6:56:02 PM

PB Americas, Inc.
230 WEST MONROE STREET,
SUITE 900
CHICAGO, ILL. 60606
312782-8150

USER NAME: kjanstro
PLOT SCALE:
PLOT DATE: 3/25/2011

DESIGNED: J. HEMPHILL
CHECKED: D. LODUCA
DRAWN: K. JORDAN
CHECKED: D. LODUCA

REVISED
REVISED
REVISED
REVISED

**STATE OF ILLINOIS
DEPARTMENT OF TRANSPORTATION**

**EAST CONTROL HOUSE
ELECTRICAL PLANS
FOR STRUCTURE NO. 016-2445**
SHEET NO. E2 OF E4 SHEETS

F.A.P. RTE.	SECTION	COUNTY	TOTAL SHEETS	SHEET NO.
389	2424.2B-I-2	COOK	14	12
CONTRACT NO. 60P18				
FED. ROAD DIST. NO. 7 ILLINOIS FED. AID PROJECT				