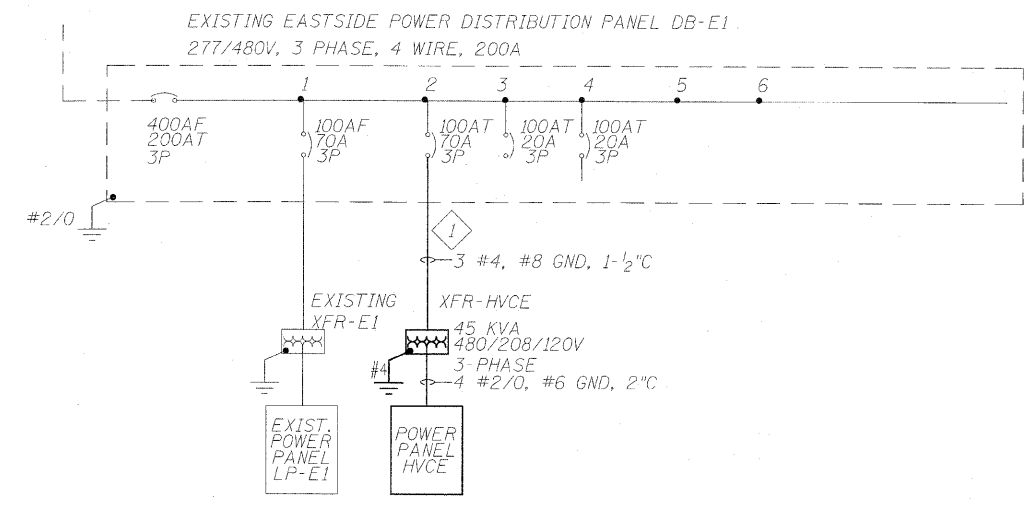


**Sheet Key Notes:**

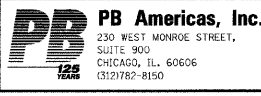
1 Feed transformer HVCE from existing 70 amp breaker in panel DB-E1.

THREE PHASE PANEL SCHEDULE											
PANEL NAME: HVCE		MAIN BKR: 150A MCB		AIC RATING: 10,000 AMPS							
VOLTS: 120/208		BUS SIZE: 225 A		MOUNTING: SURFACE							
PHASE: 3											
Ø	DIRECTORY	LOAD	WIRE	AMP	Ø	WIRE	AMP	LOAD	DIRECTORY	Ø	
A	UNIT HEATER UH-008	1650	#12	20	2	#12	20	1750	CU-001, AC-001	A	
B		1650			3			1750		B	
C	UNIT HEATER UH-009	1500		20	2	#12	20	1750	CU-002, AC-002	C	
A		1500			5					A	
B	UNIT HEATER UH-007	1500		20	2	#12	20	850	CU-003, AC-003	B	
C		1500			7			850		C	
A	CUH-002	1500		20	2	#12	20	850	CU-004, AC-004	A	
B		1500			9			850		B	
C	UNIT HEATER UH-012	1650		20	2	#12	20		SPACE	C	
A		1650			11				SPACE	A	
B	UNIT HEATER UH-011	1650		20	2	#12	20		SPACE	B	
C		1650			13				SPACE	C	
A	UNIT HEATER UH-010	1650		20	2	#12	20		SPACE	A	
B		1650			15				SPACE	B	
C	SPACE				17				SPACE	C	
A	SPACE				19				SPACE	A	
B	SPACE				21				SPACE	B	
C	SPACE				23				SPACE	C	
A	SPACE				25				SPACE	A	
B	SPACE				27				SPACE	B	
C	SPACE				29				SPACE	C	
A	SPACE				31				SPACE	A	
B	SPACE				33				SPACE	B	
C	SPACE				35				SPACE	C	
A	SPACE				37				SPACE	A	
B	SPACE				39				SPACE	B	
C	SPACE				41				SPACE	C	

NOTES:



T:\16843A-CongressParkwayBridge\Drawings\0162445-60P18-FSR-063E4.dgn  
3/25/2011 6:56:44 PM



USER NAME: kienstra	DESIGNED: J. HEMPHILL	REVISED:
PLOT SCALE:	CHECKED: D. LODUCA	REVISED:
PLOT DATE: 3/25/2011	DRAWN: K. JORDAN	REVISED:
	CHECKED: D. LODUCA	REVISED:

**STATE OF ILLINOIS  
DEPARTMENT OF TRANSPORTATION**

**EAST CONTROL HOUSE  
SCHEDULES AND DETAILS  
FOR STRUCTURE NO. 016-2445**

SHEET NO. E4 OF E4 SHEETS

F.A.P. RTE. 389	SECTION 2424.2B-1-2	COUNTY COOK	TOTAL SHEETS 14	SHEET NO. 14
CONTRACT NO. 60P18			FED. ROAD DIST. NO. 7 ILLINOIS FED. AID PROJECT	