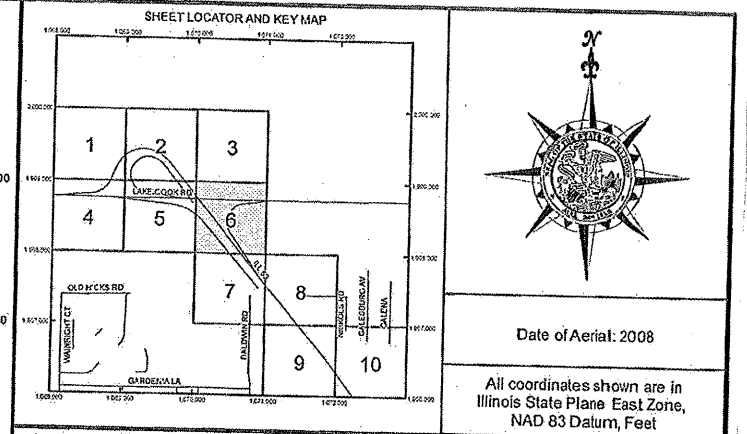
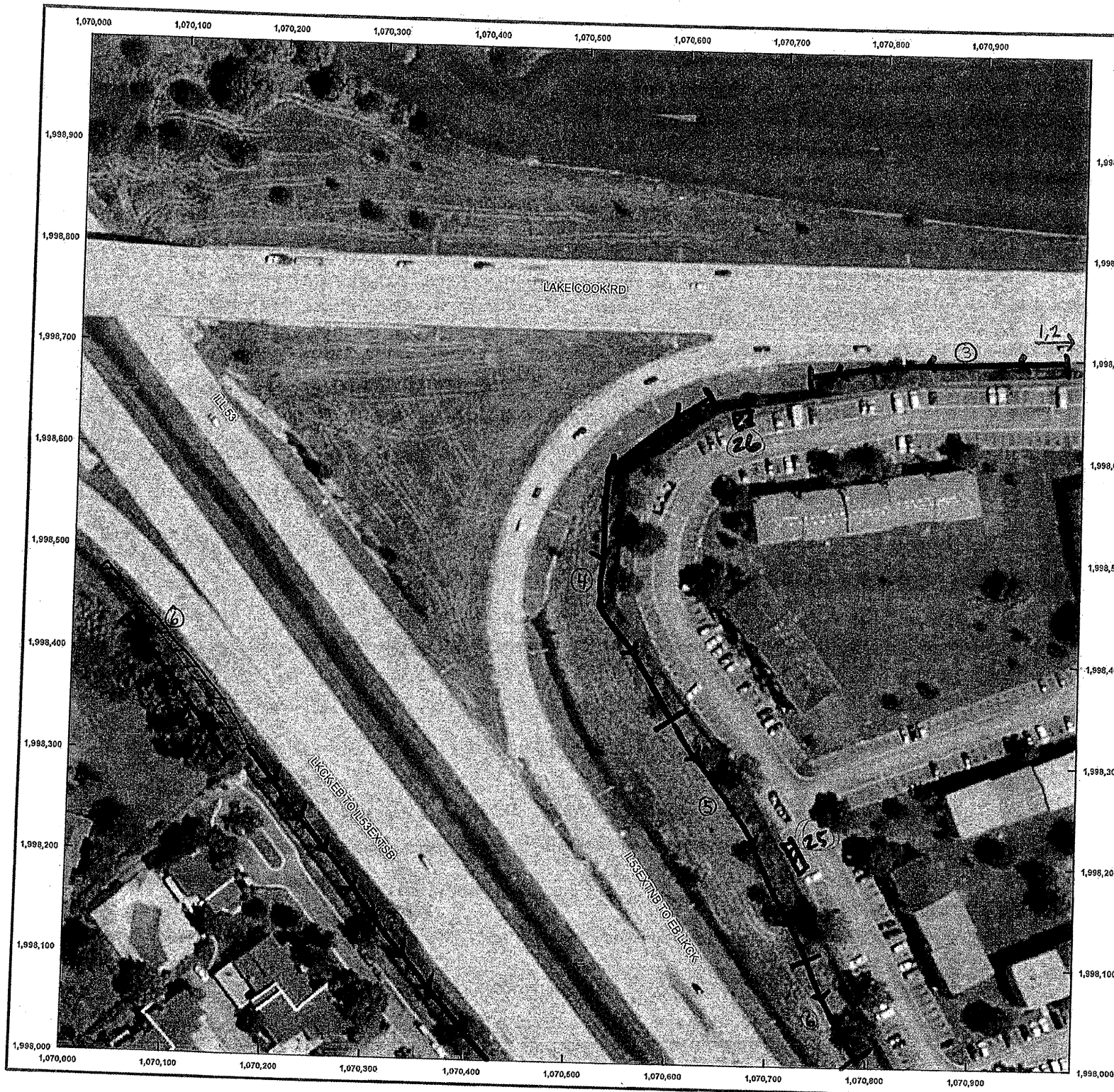


ROUTE	SECTION	COUNTY	TOTAL SHEETS	SHEET NUMBER
FAP 342/	2011-026-1	COOK & LAKE	71	63

CONTRACT NO. 60P26



(5B) Eastside wall - selective clearing / tree removal:
 ⑥ 255' x 40' / 10.9, 7

(5B) West side wall - selective clearing / tree removal:
 ⑩ 50' x 5'
 10.5
 1.6
 8.9
 7.7

(1B) West side wall - selective clearing / tree removal:

① 355' x 3'	10.1	9.1	6.4
② 3' x 3'	12.8	11.2	4.2
③ 260' x 5'	14.7	10.6	3.6
④ 345' x 5'	8.3	12.3	
⑤ 270' x 15'	8.4	4.9	
⑥ 40' x 20'	9	12.5	9.7

(1B) Eastside wall - selective clearing / tree removal:
 ②5 40' x 1' 2.3
 ②6 2' x 2'

ILLINOIS DEPARTMENT OF
 TRANSPORTATION
 ILL RTE 53
 SELECTIVE CLEARING & TREE
 REMOVAL
 SHEET 3 OF 9