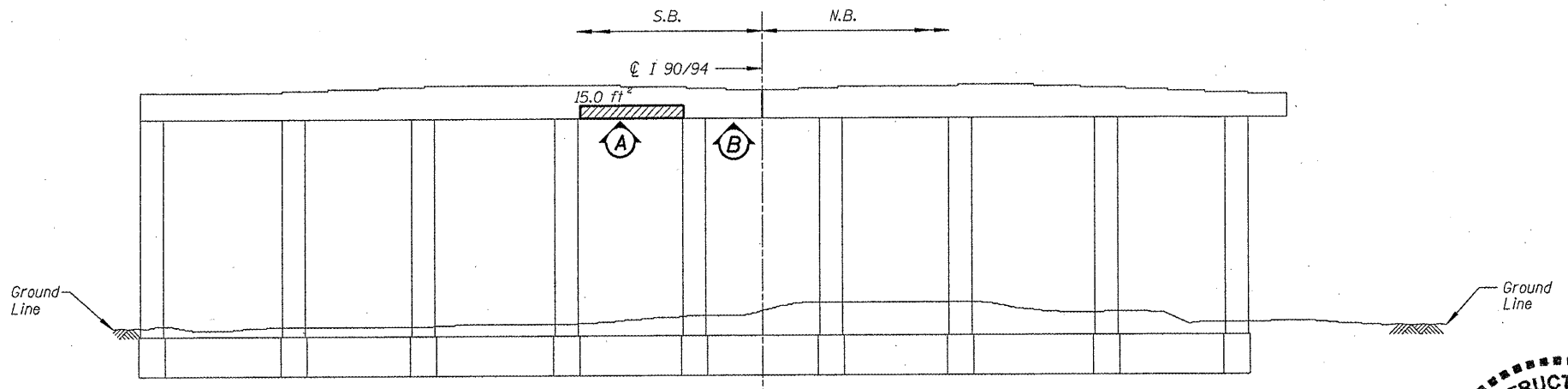
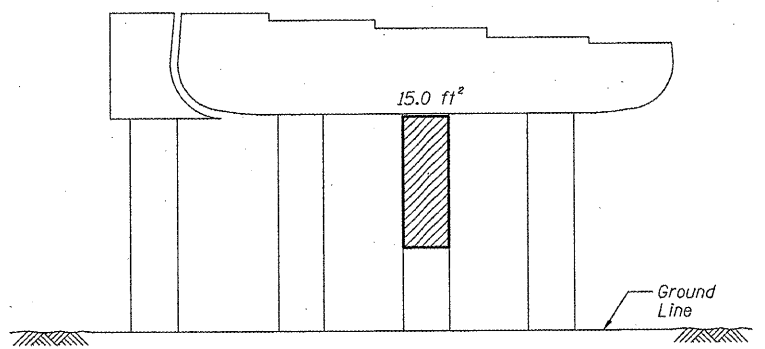


ROUTE	SECTION	COUNTY	TOTAL SHEETS	SHEET NUMBER
FAI 90/94	2011-027-I	COOK	87	34

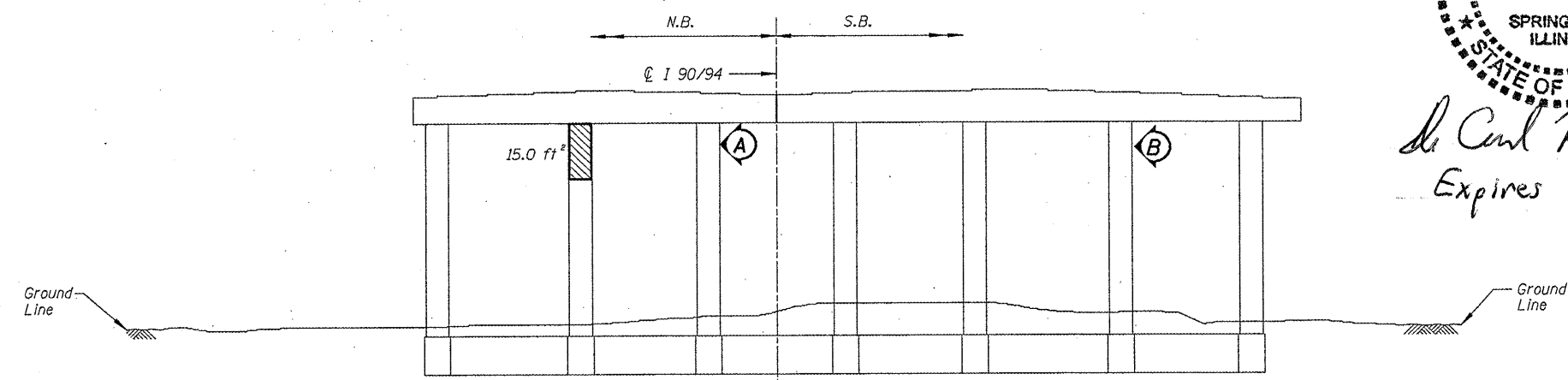
CONTRACT NO. 60P27



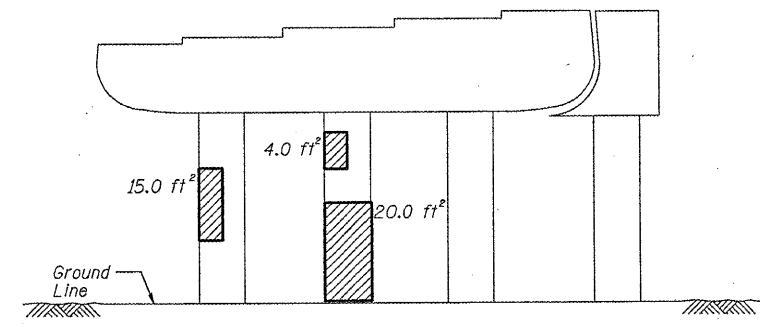
PIER 12 - SOUTH ELEVATION
(Looking North)



PIER A-11 - NORTH ELEVATION
(Looking South)



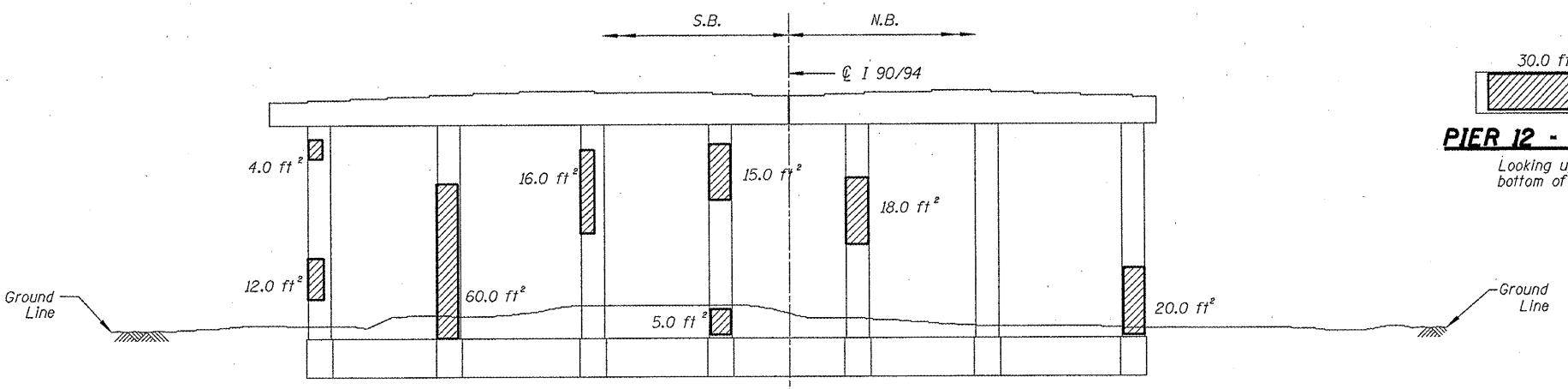
PIER 11 - NORTH ELEVATION
(Looking South)



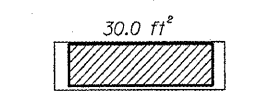
PIER A-11 - SOUTH ELEVATION
(Looking North)



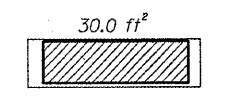
David Carl Puze 5/13/11
Expires 11/30/2012



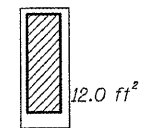
PIER 11 - SOUTH ELEVATION
(Looking North)



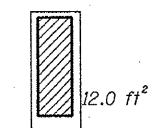
PIER 12 - VIEW A
Looking up at bottom of cap



PIER 12 - VIEW B
Looking up at bottom of cap



PIER 11 - VIEW A
Looking East of side of column



PIER 11 - VIEW B
Looking East of side of column

▨ - Structural Repair of Concrete (Depth equal to or less than 5")

BILL OF MATERIAL

ITEM	UNIT	QUANTITY
Structural Repair of Concrete (Depth equal to or less than 5")	SQ. FT.	318.0

ILLINOIS DEPARTMENT OF
TRANSPORTATION
I-90/94 (DAN RYAN EXPRESSWAY)
SUBSTRUCTURE REPAIRS
SN 016-1112
PIERS 11, 12, & A-11