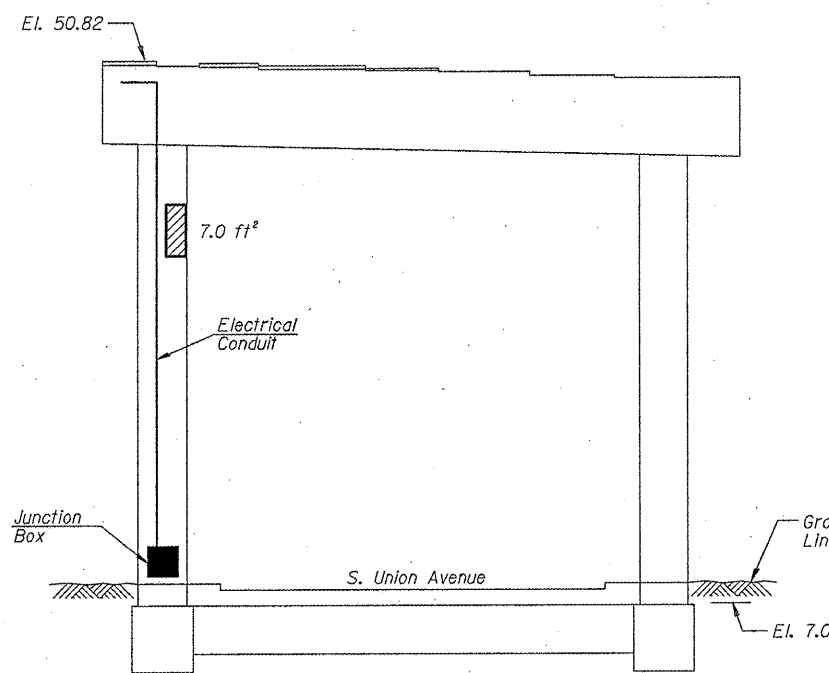
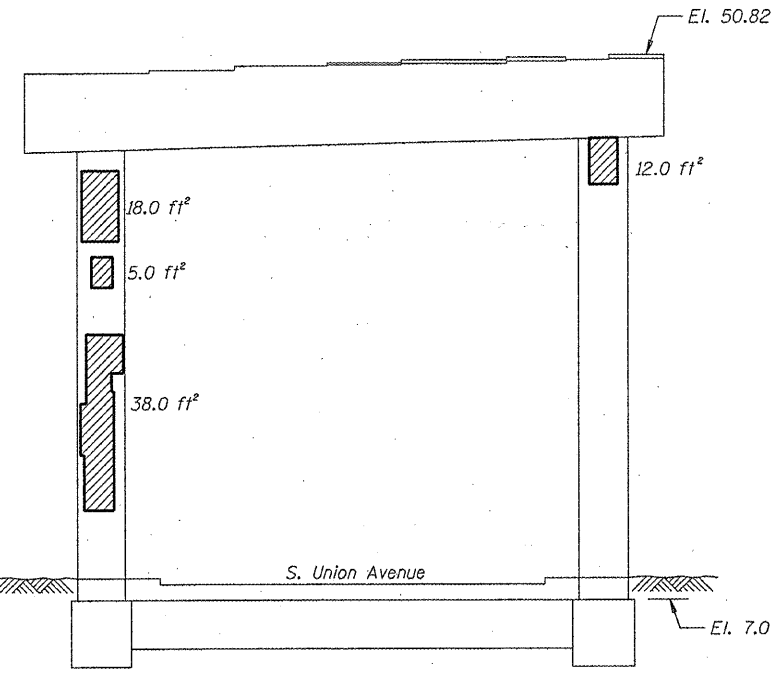


ROUTE	SECTION	COUNTY	TOTAL SHEETS	SHEET NUMBER
FAI 90/94	2011-027-I	COOK	87	44

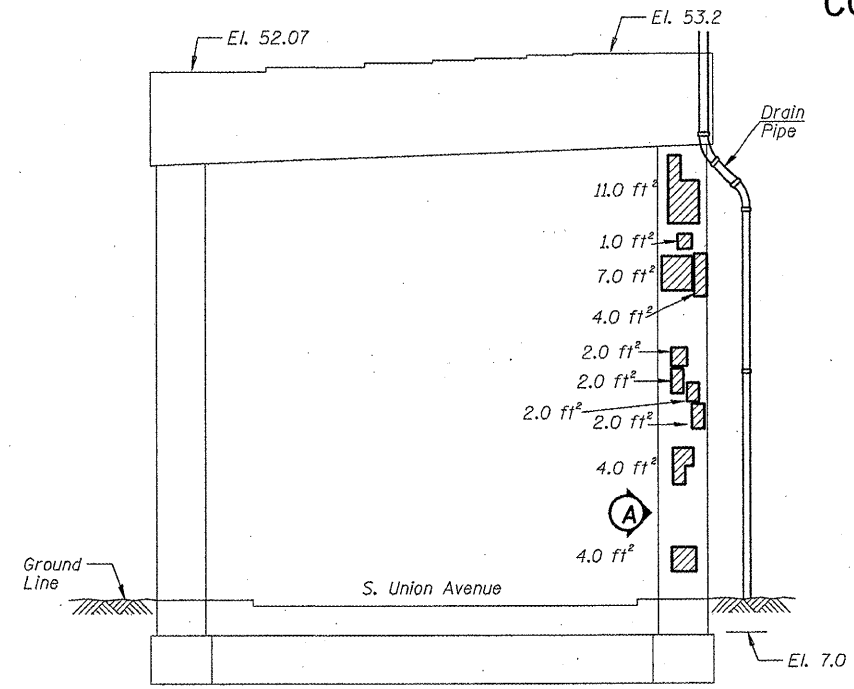
CONTRACT NO. 60P27



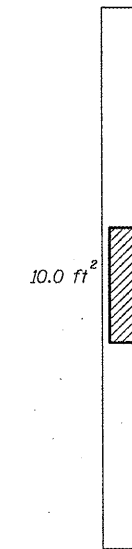
PIER C-4 - SOUTH ELEVATION
(Looking North)



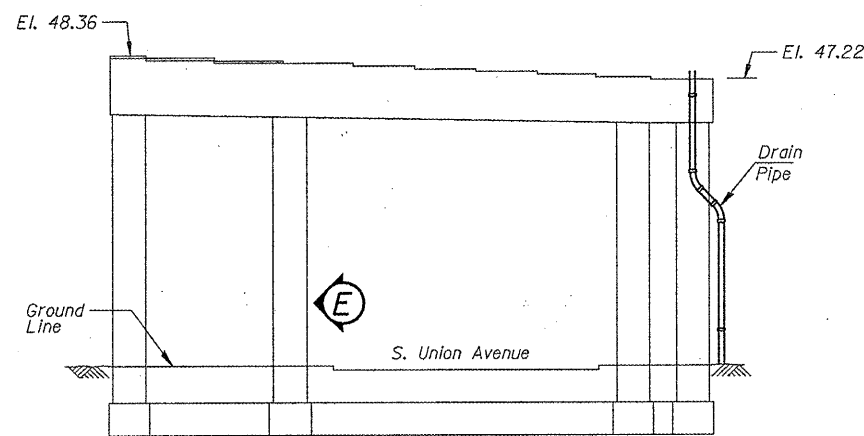
PIER C-4 - NORTH ELEVATION
(Looking South)



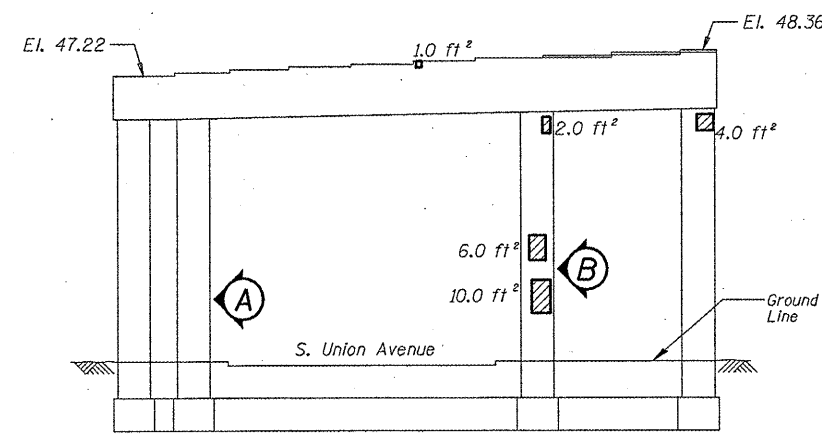
PIER C-3 - SOUTH ELEVATION
(Looking North)



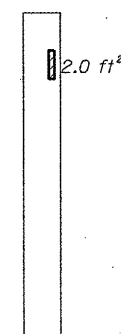
PIER C-3 - VIEW A
Looking East at side of column



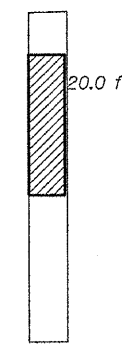
PIER C-5 - SOUTH ELEVATION
(Looking North)



PIER C-5 - NORTH ELEVATION
(Looking South)



PIER C-5 - VIEW A
Looking East at side of column



PIER C-5 - VIEW B
Looking East at side of column



PIER C-5 - VIEW E
Looking West at side of column

- Structural Repair of Concrete (Depth equal to or less than 5")

BILL OF MATERIAL

ITEM	UNIT	QUANTITY
Structural Repair of Concrete (Depth equal to or less than 5")	SQ. FT.	176.0

ILLINOIS DEPARTMENT OF
TRANSPORTATION
I-90/94 (DAN RYAN EXPRESSWAY)
SUBSTRUCTURE REPAIRS
SN 016-1113
PIERS C-3, C-4, & C-5